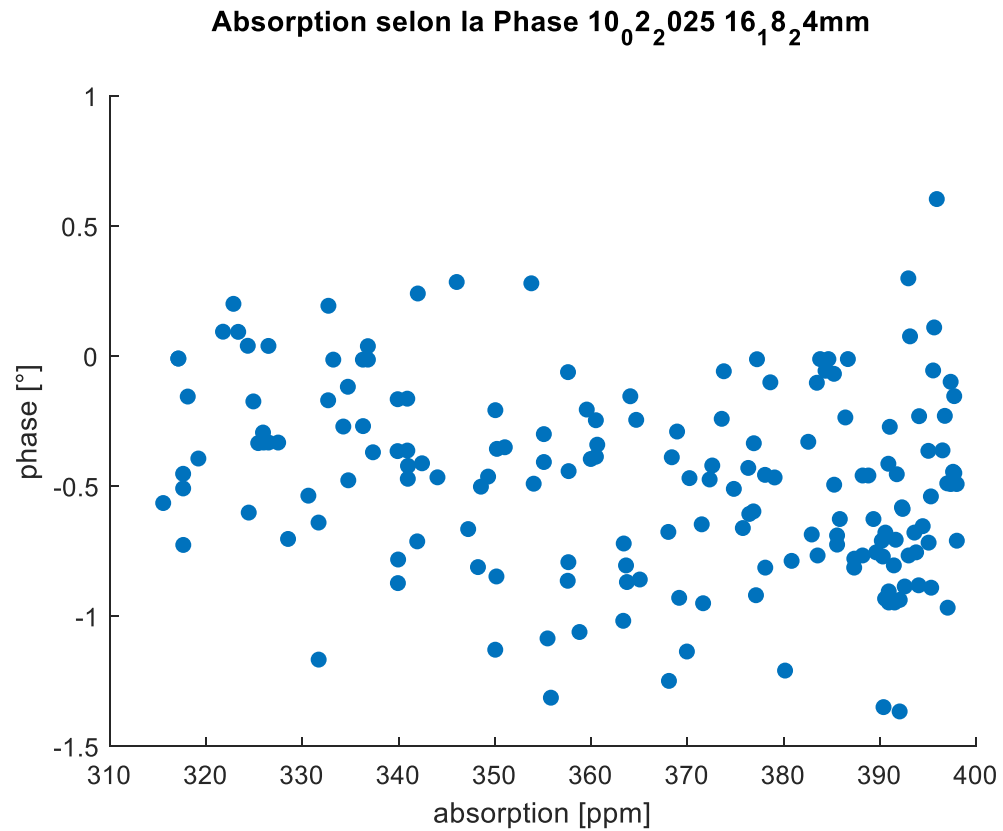


Pathfinder - ETM05

C24106+C25006

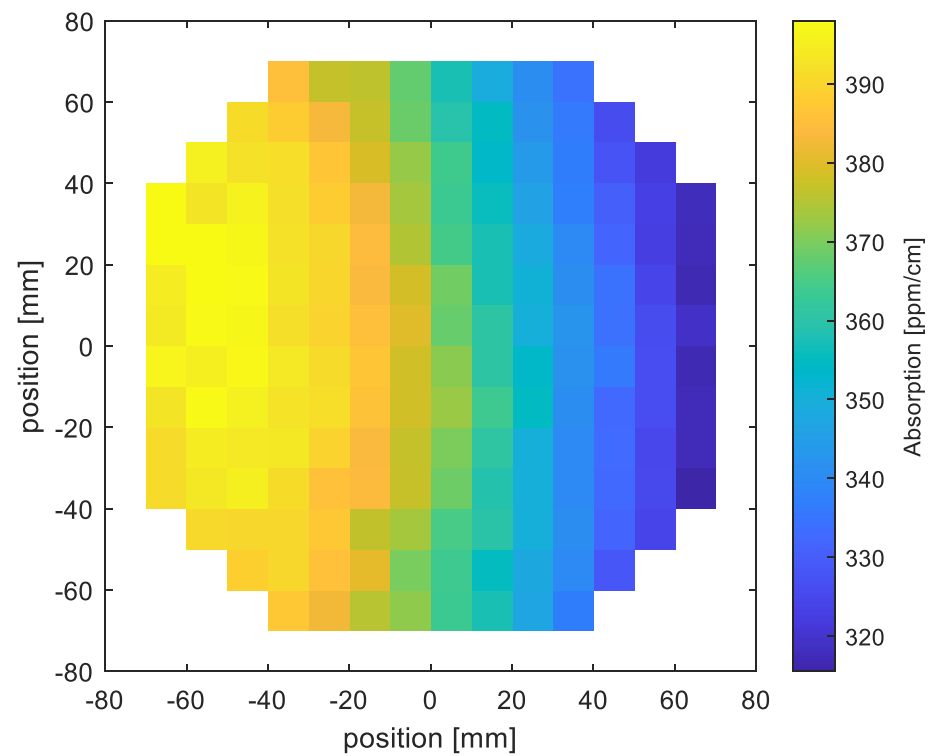
Absorption measurements

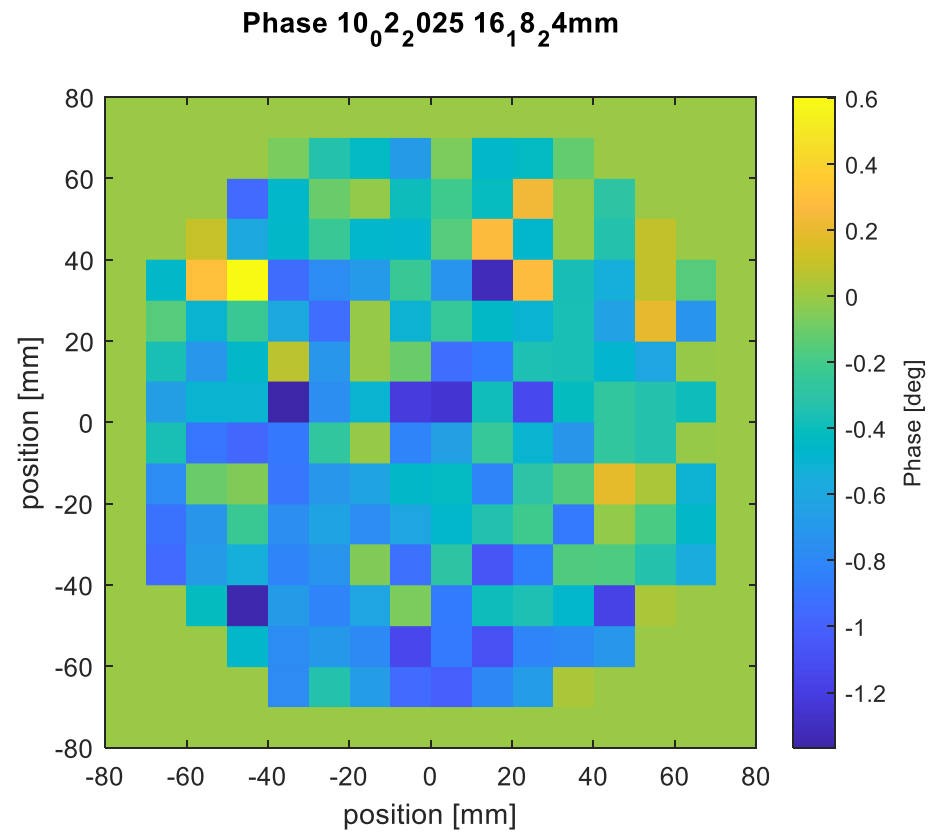
C24106+C25006 – ETM05 Pathfinder



Median : 370 ppm

Absorption $10_0 2_2 025 16_1 8_2 4\text{mm}$





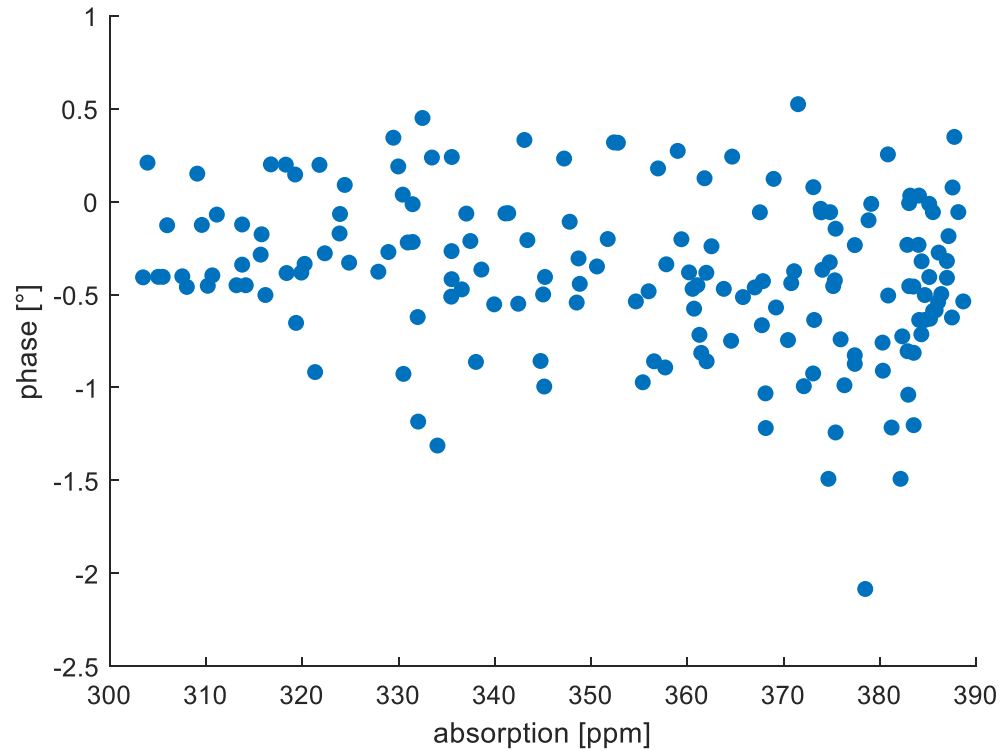
No variation of phase : tip/tilt OK

C24106+C25006 – ETM05 Pathfinder

Sample turned of + 90°



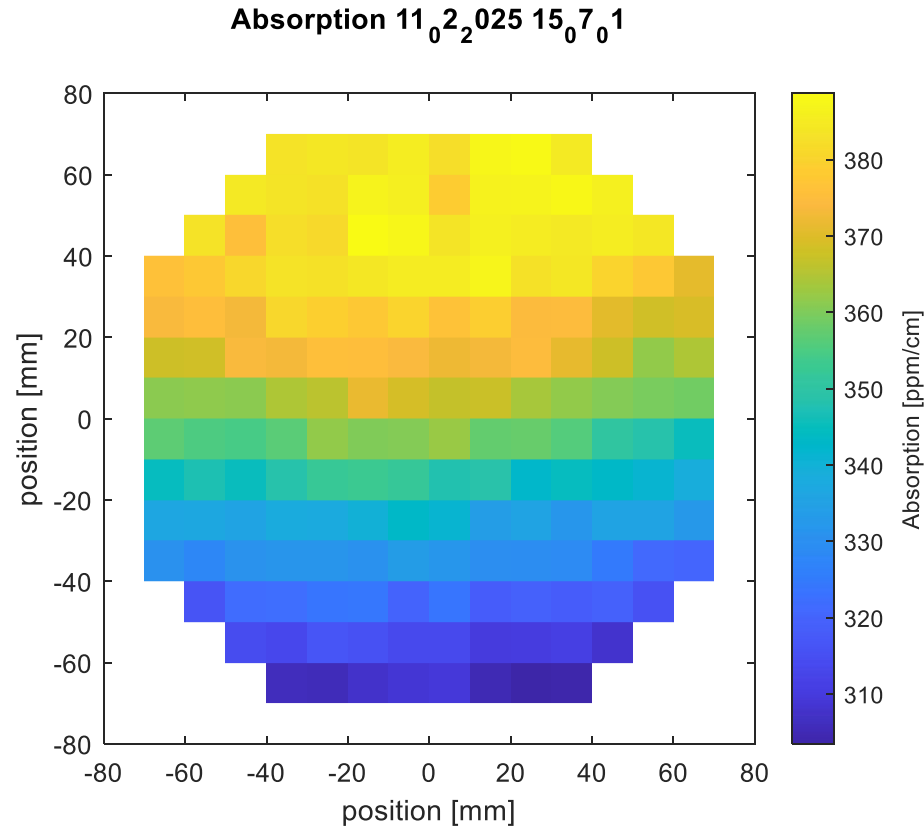
Absorption selon la Phase $11_0 2_2 025 15_0 7_0 1$



Median : 361 ppm

C24106+C25006 – ETM05 Pathfinder

Sample turned of + 90°

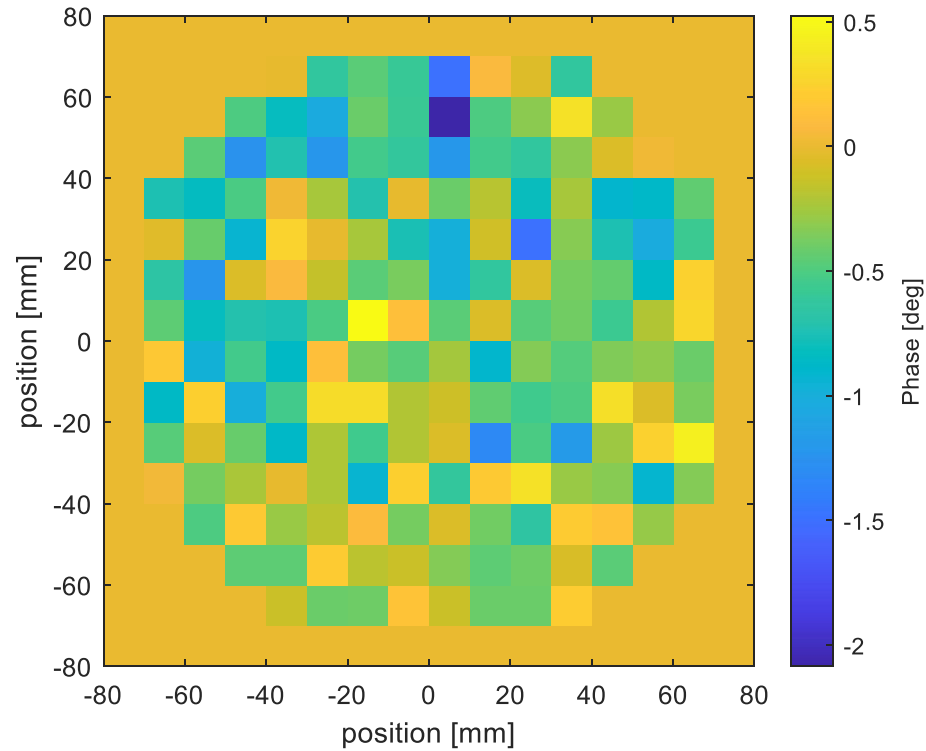


The pattern turned too : the tilt comes from the deposit materials
(or from an unknown pollution layer)

Sample turned of + 90°



Phase $11_0 2_2 025 15_0 7_0 1$



No variation of phase : tip/tilt OK again