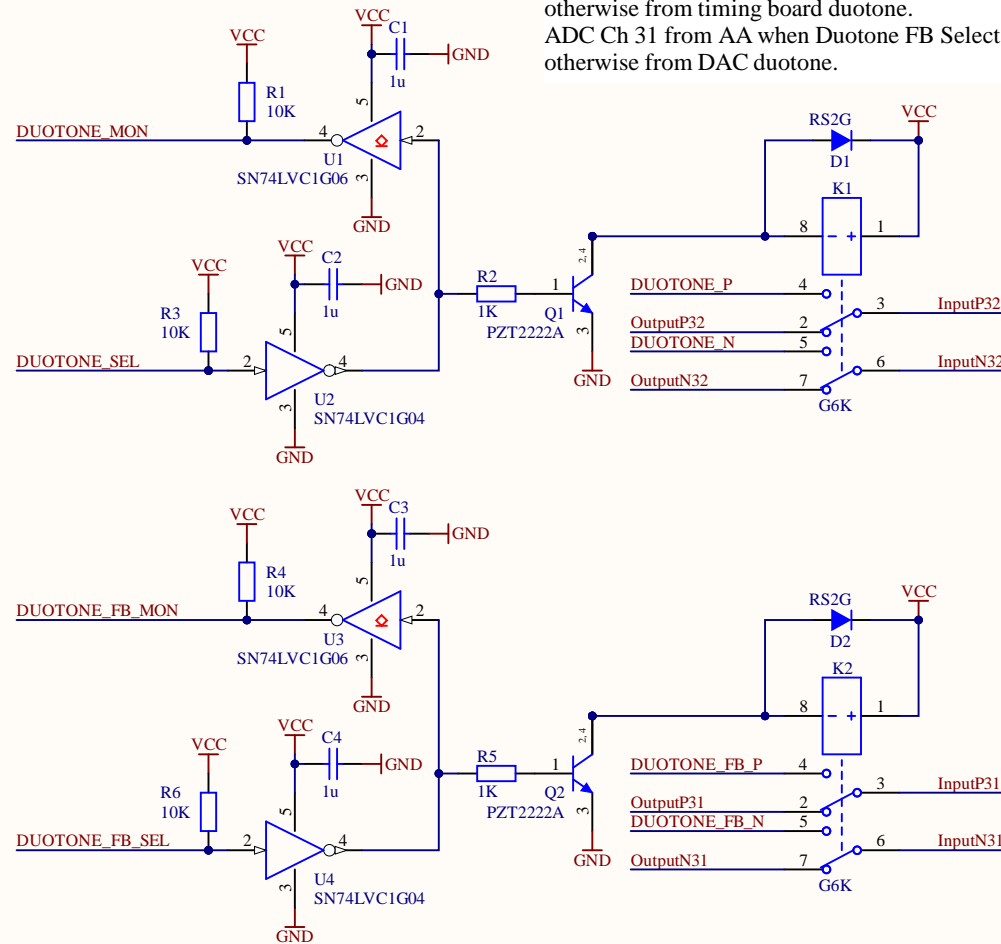
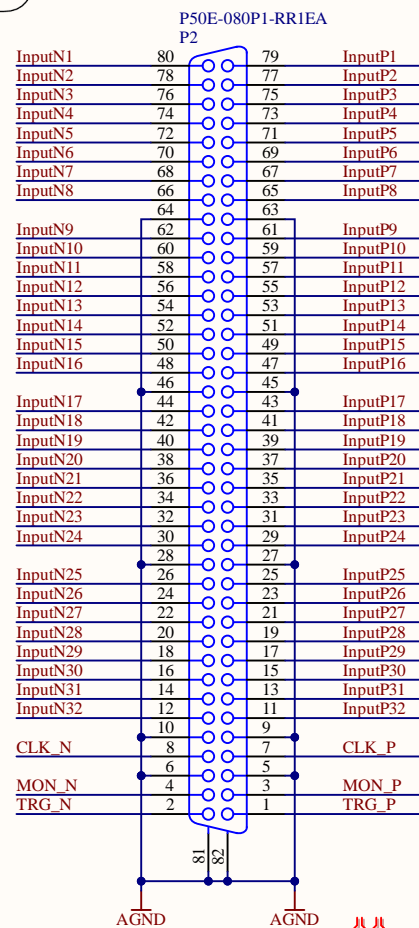


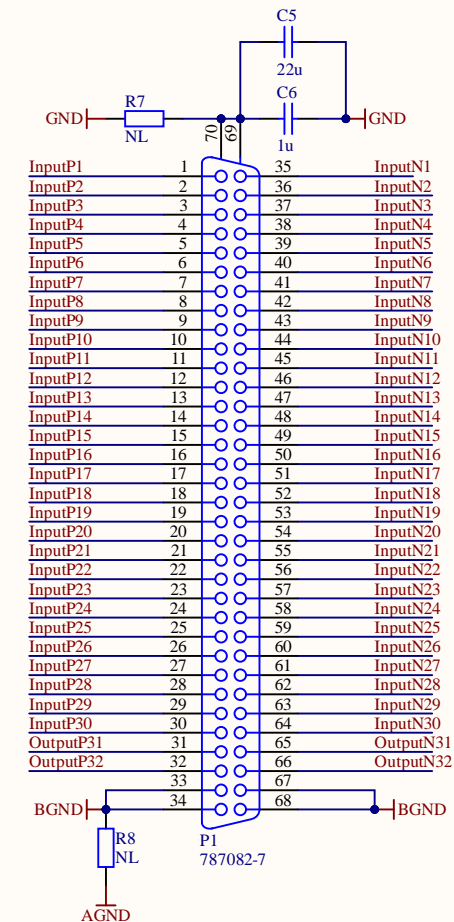


## Diff Inputs to ADC

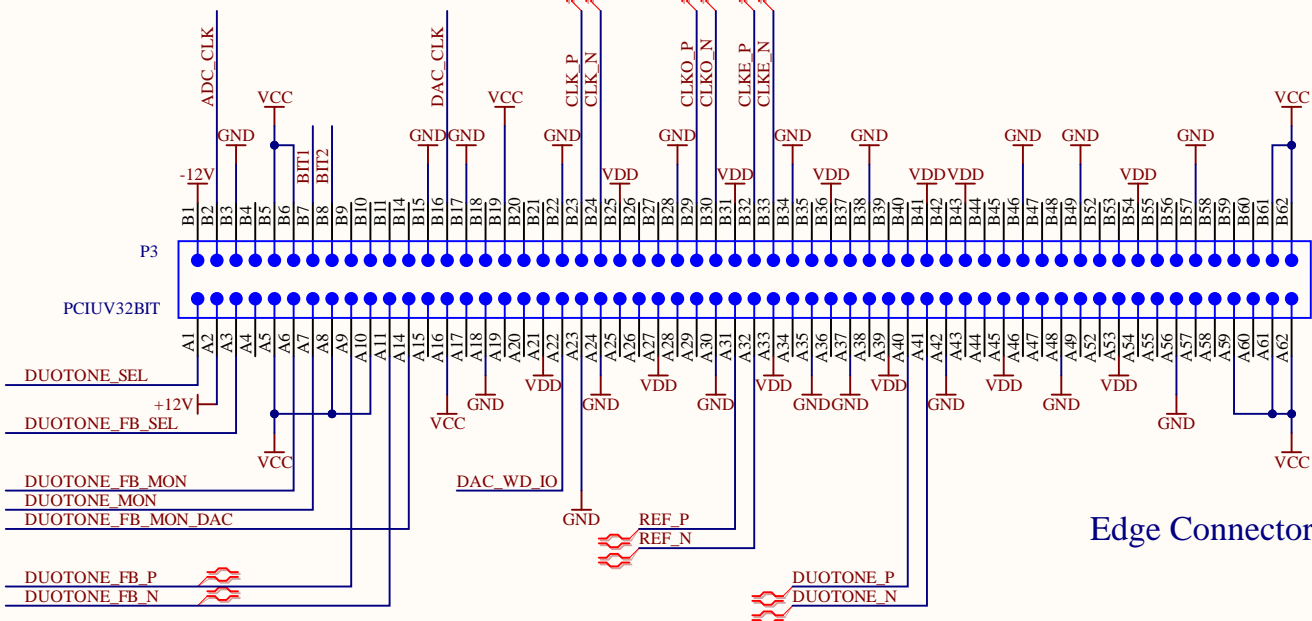


ADC Ch 32 from AA when Duotone Select is disengaged, otherwise from timing board duotone.  
 ADC Ch 31 from AA when Duotone FB Select is disengaged, otherwise from DAC duotone.

## Diff Inputs from Anti-Alias



- PN1   
 Mounting bracket  
 Gompf  
 9334-0158LC
- PN2   
 Screwlock Kit  
 Digi-Key  
 A23470-ND



## Edge Connector



Project <b>LIGO ADC Adapter: 32 channels</b>		LIGO Laboratory California Institute of Technology Massachusetts Institute of Technology National Science Foundation		
Sheet Title <b>Top Sheet</b>				
Size: <b>B</b>	DCC D2400280			Rev: 1
Date: 9/5/2024	Time: 2:45:00 PM			Sheet: 1 of 1
File: LIGO_ADC32_Adapter.SchDoc		DrawnBy: Daniel Sigg		