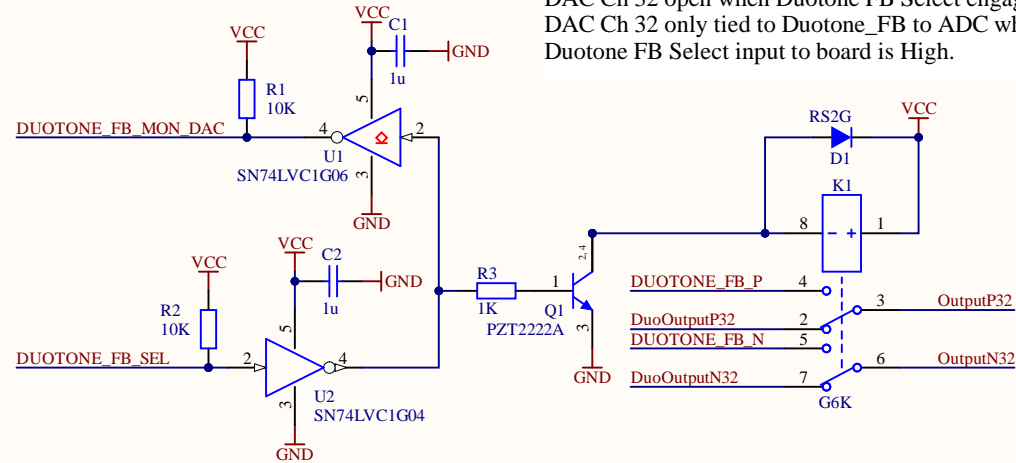
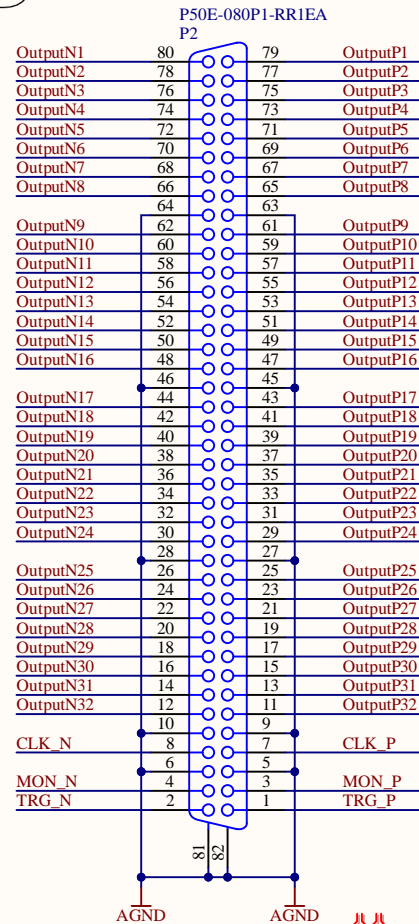


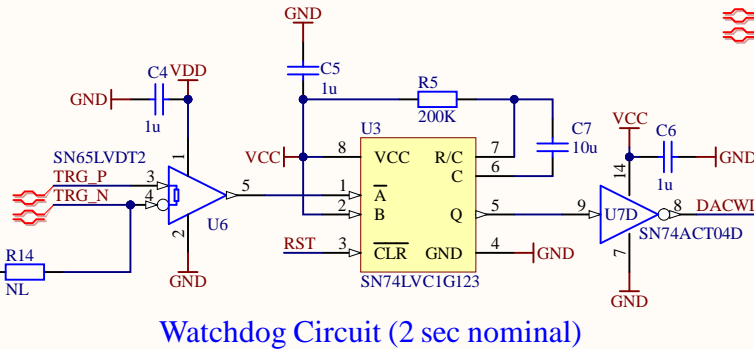
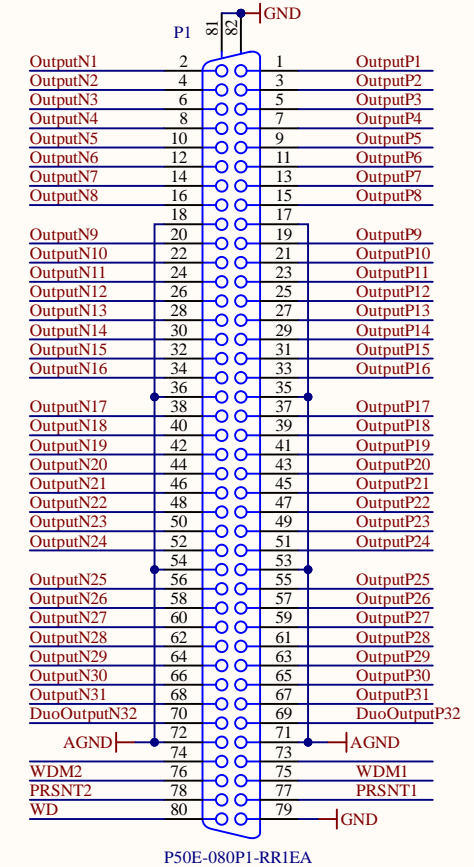


Diff Outputs from DAC

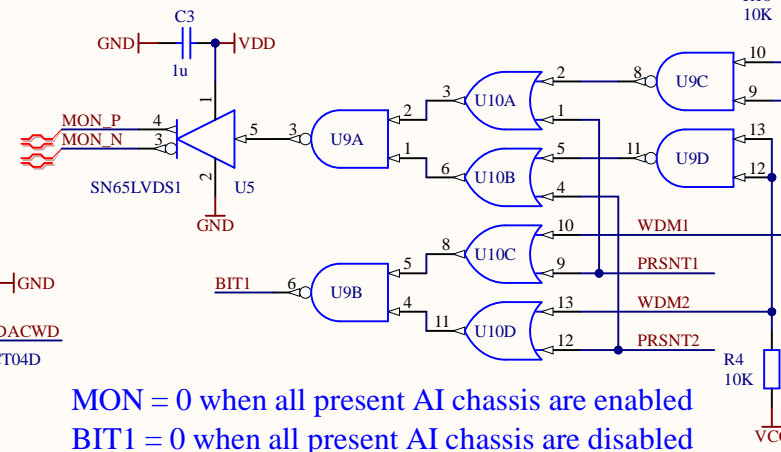


DAC Ch 32 open when Duotone FB Select engaged.
 DAC Ch 32 only tied to Duotone_FB to ADC when Duotone FB Select input to board is High.

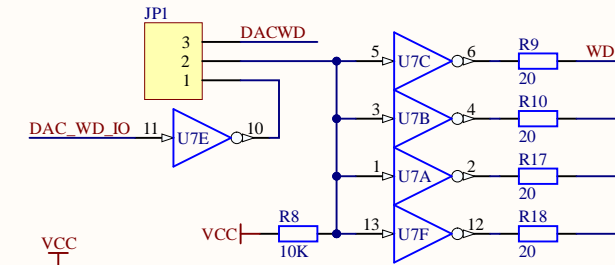
Outputs to AI Filters



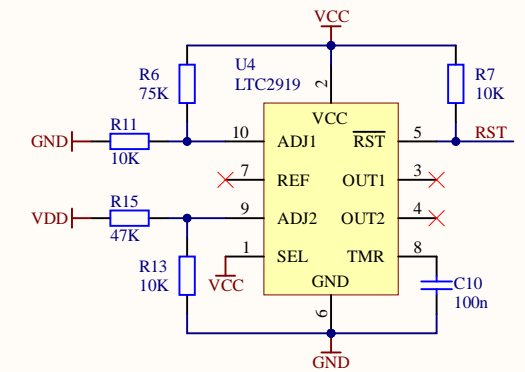
Watchdog Circuit (2 sec nominal)



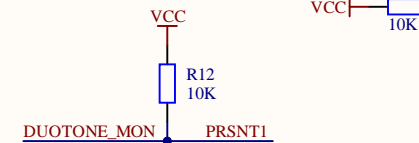
MON = 0 when all present AI chassis are enabled
 BIT1 = 0 when all present AI chassis are disabled



Reset Circuit (1 sec delay)

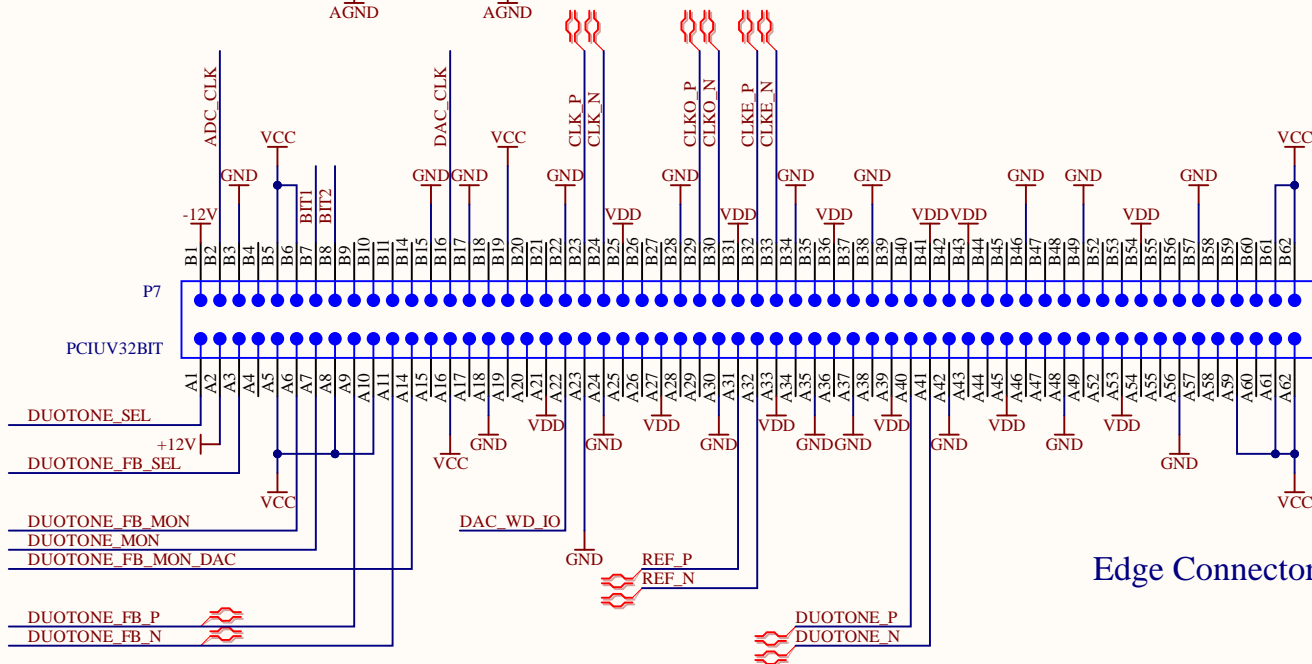


UV < 4.25V, UV < 2.85V



Duotone Mon reads present bits

PR1	WDM1	PR2	WDM2	MON	BIT1
0	0	0	0	0	1
0	1	0	0	1	1
0	0	0	1	1	1
0	1	0	1	1	0
1	X	0	0	0	1
1	X	0	1	1	0
0	0	1	X	0	1
0	1	1	X	1	0
1	X	1	X	0	0



Edge Connector