

Developing a Sensor Array and Applying Seismic Localization to Determine the Source of 4.2 and 15 Hz Features at LLO

Priti Rangnekar, Stanford LIGO Group
Mentors: Dr. Beverly Berger, Dr. Brian Lantz
DCC G2101868

Chosen equipment for the sensor array:

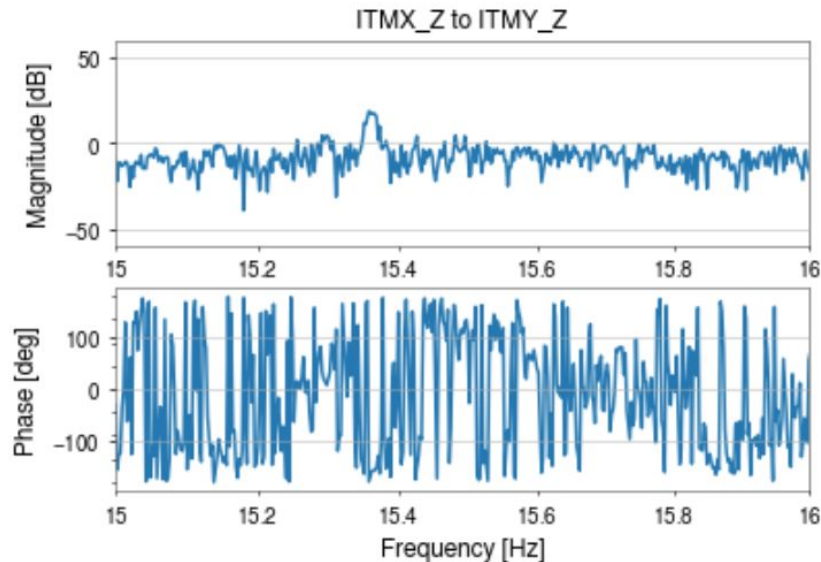
1. 15 3-component L-22 sensors to be placed across the LLO site
2. RefTek 130 Datalogger, sampling rate of 200 Hz



RT130
Datalogger



L22 Sensor



Transfer function for 2 locations on the interferometer, showing a peak at 15.3 Hz. Used to identify direction.