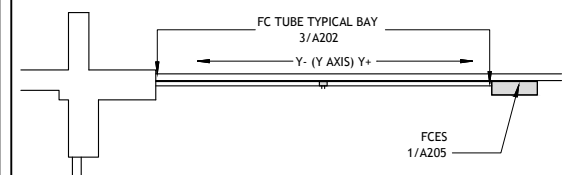
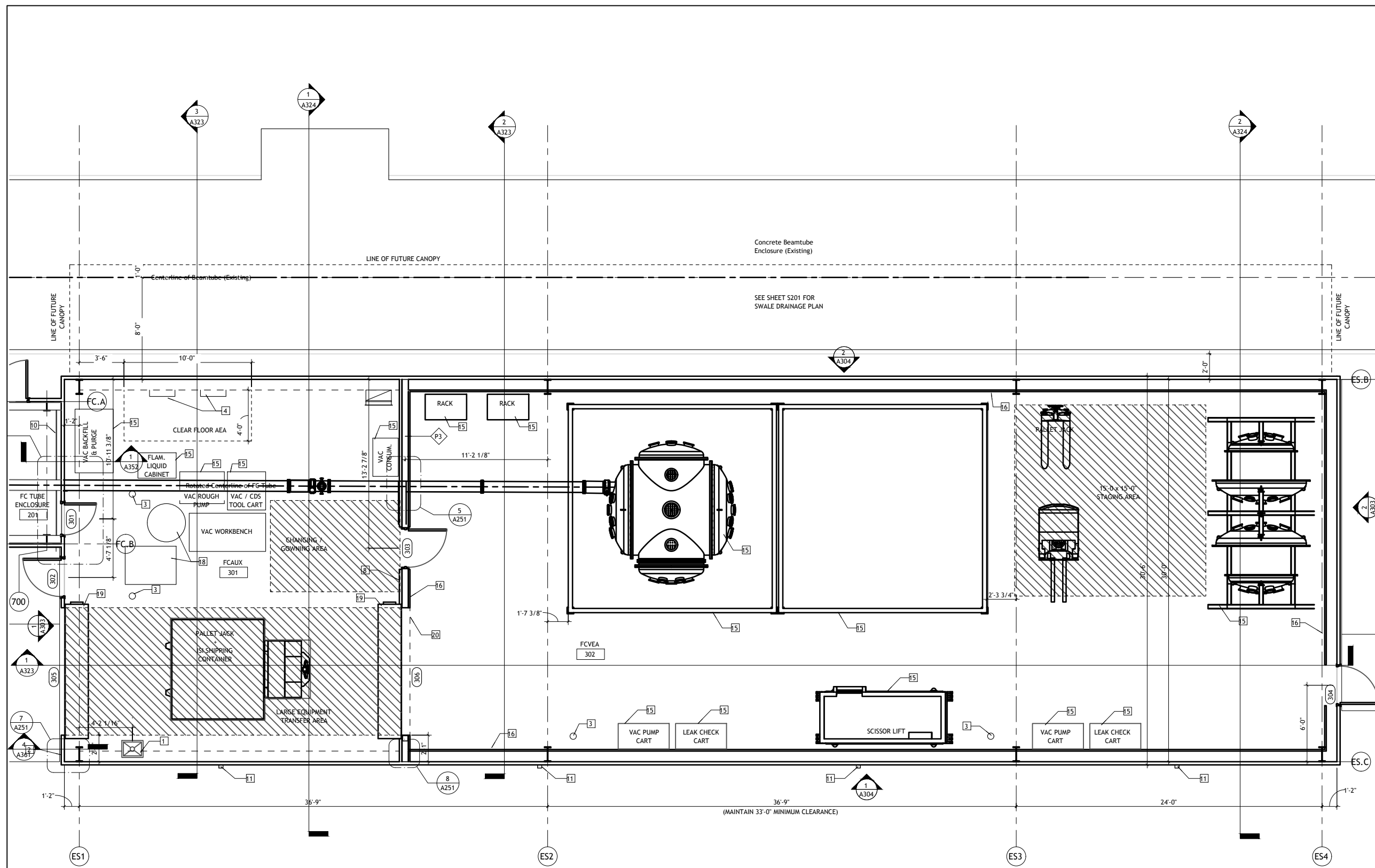


KEYNOTES - FLOOR PLAN

- 1 JANITORIAL SINK
- 2 HOSE BIB
- 3 FLOOR DRAIN
- 4 ELECTRICAL PANEL-SEE ELECTRICAL DRAWINGS
- 5 CONCRETE PLATFORM TO MATCH EXISTING CONCRETE PLATFORM HEIGHT
- 6 METAL GRATED STAIRS AND GUARDRAIL
- 7 FUTURE CONCRETE RAMP AND LANDING, NOT IN PROJECT SCOPE
- 8 LASER CONDITION SIGN, SEE 1/A/902 FOR ELEVATION
- 10 EXPANSION JOINT AND COVER
- 11 DOWNSPOUT
- 12 CONTRACTOR CONSTRUCTED TEMPORARY CLEAN ROOM
- 13 EXISTING EYEWASH STATION, TO REMAIN ACCESSIBLE DURING CONSTRUCTION
- 14 EXISTING JANITORIAL SINK, TO REMAIN ACCESSIBLE DURING CONSTRUCTION
- 15 OWNER INSTALLED EQUIPMENT
- 16 LINER PANEL
- 17 CROSS BRACING, SEE STRUCTURAL
- 18 NEW SUPPLY WATER TANK AND PUMP, SEE PLUMBING
- 19 INSULATED OVERHEAD DOOR
- 20 VINYL STRIP DOOR



LIGO-D2100298-v1

DANA ENGINEERING, INC.
 PROFESSIONAL SERVICE CORPORATION
 4000 SOUTH IRBY STREET
 KENNEWICK, WA 99337
 (509) 582-0126

Revisions		
No.	Description	Date

LIGO Laboratory A+ Project
 Hanford, WA
FILTER CAVITY END STATION

	project number	21262.00	drawing number	A205
	date	1.13.21		
	phase	CONSTRUCTION		

