

REV.	2		1	
	DATE	DCN #	DRAWING TREE #	
v1	21 AUG 2020			

**DETAIL E**  
(ESTIMATED PERISCOPE POS. BASED ON EXISTING BEAMS)  
SCALE 1 : 20

**DETAIL A**  
SCALE 1 : 50

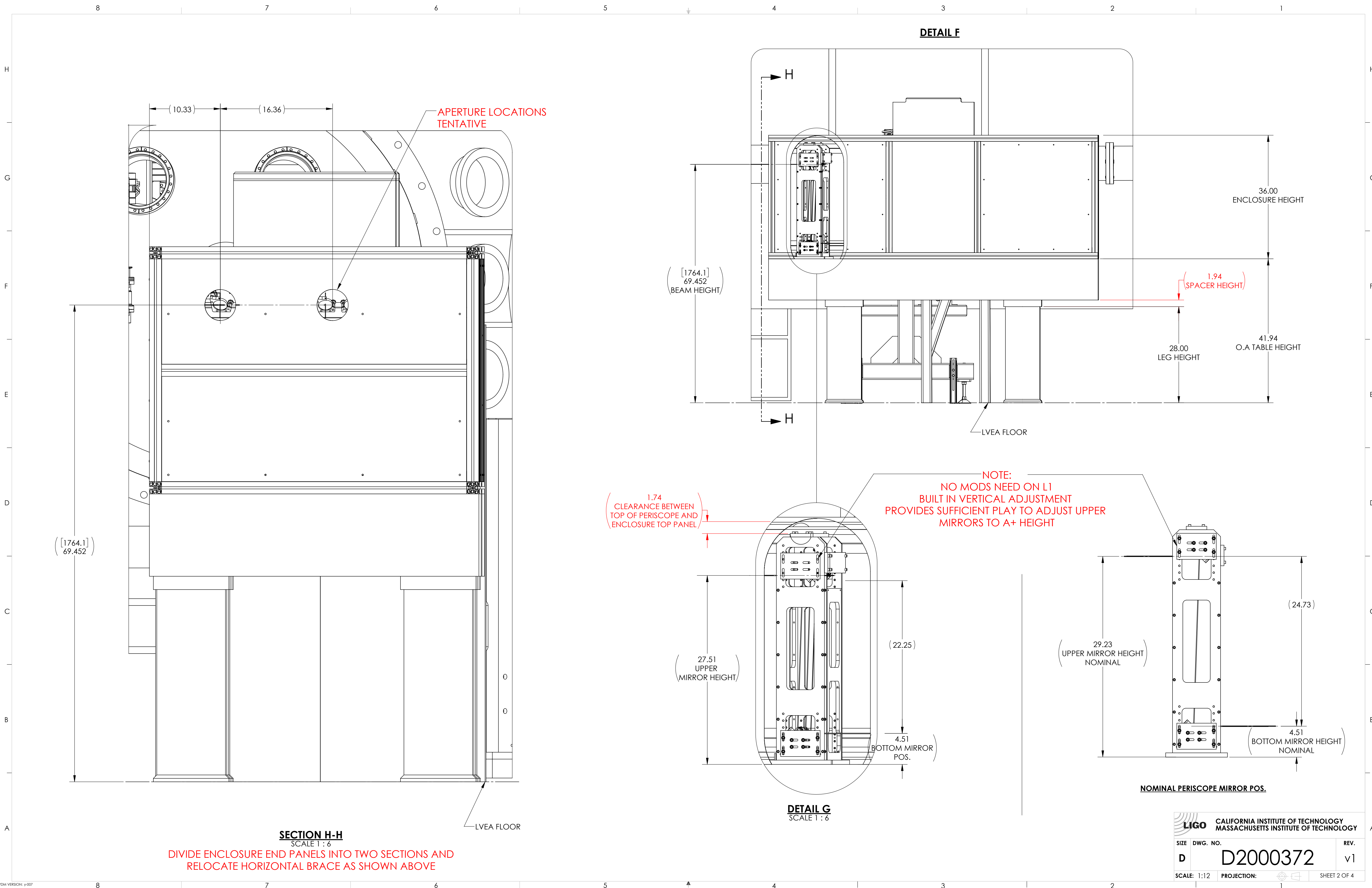
**DETAIL B**  
SCALE 1 : 25

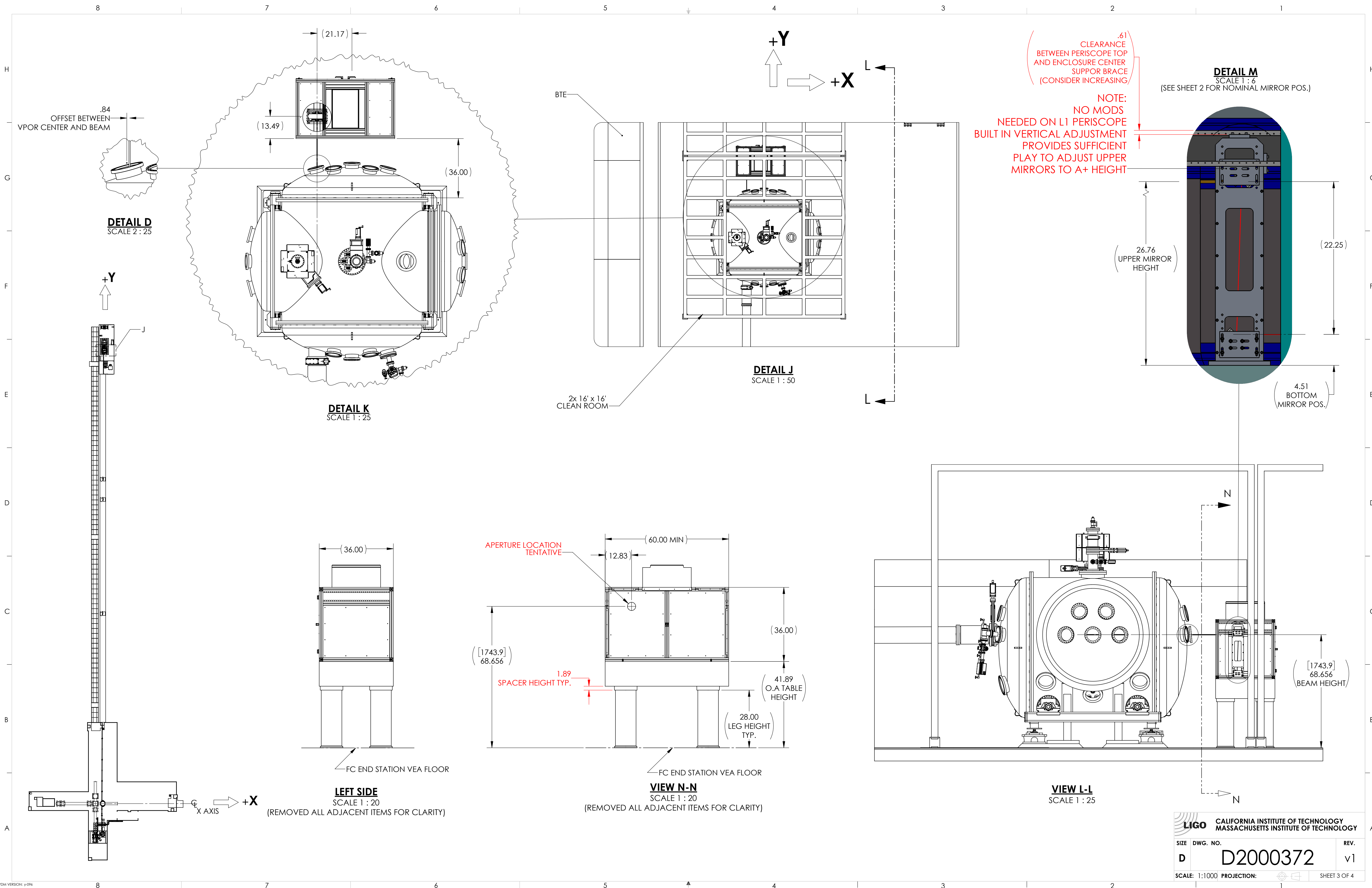
**LEFT SIDE**  
SCALE 1 : 50

**VIEW D-D**  
SCALE 1 : 50

**RIGHT SIDE**  
SCALE 1 : 50

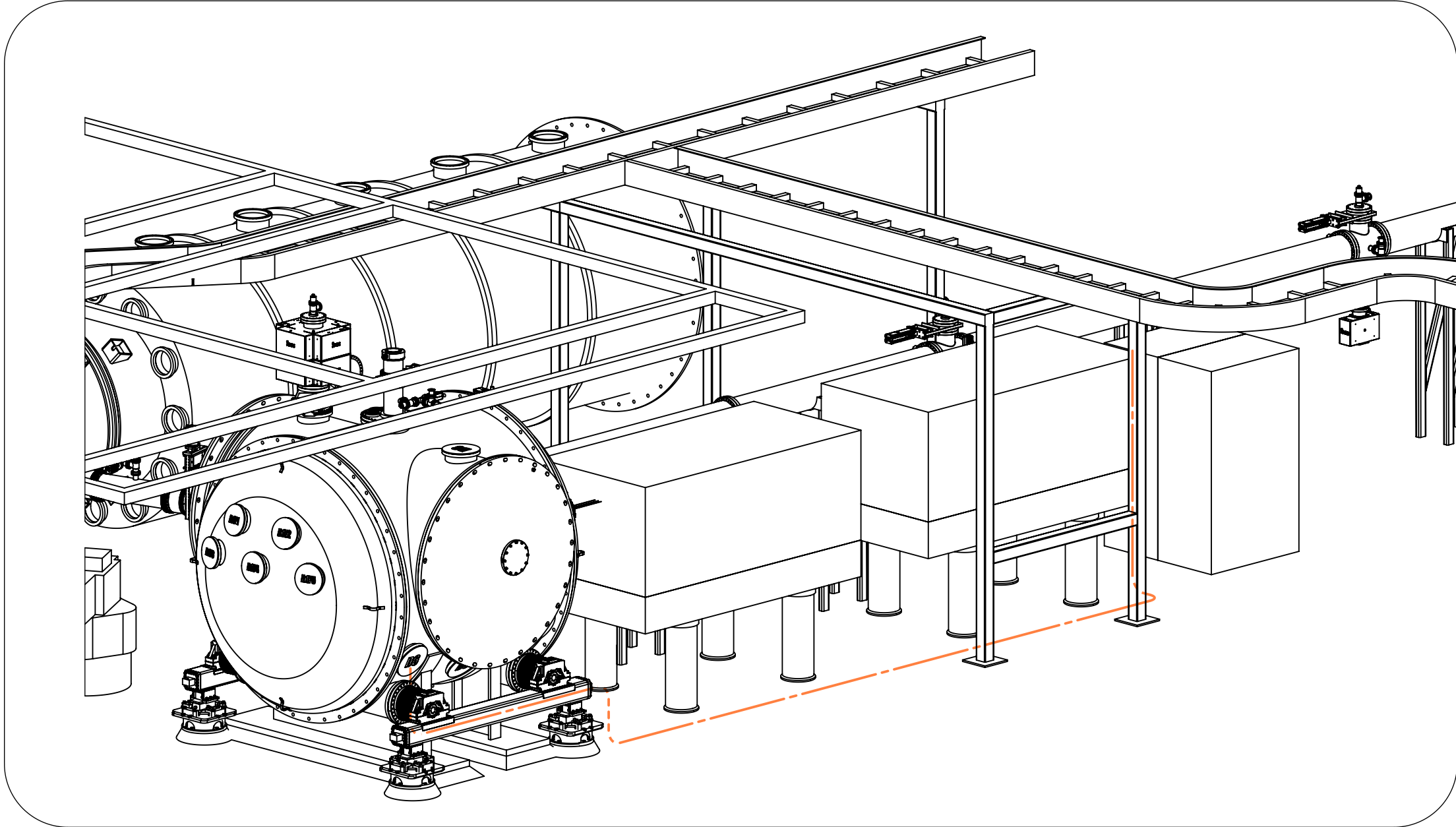
NOTES AND TOLERANCES: (UNLESS OTHERWISE SPECIFIED)				LIGO CALIFORNIA INSTITUTE OF TECHNOLOGY MASSACHUSETTS INSTITUTE OF TECHNOLOGY				PART NAME A+, SQZ, CORNER STATION INTERFACE LAYOUT (L1)			
DIMENSIONS ARE IN INCHES [MM]				SYSTEM	A+		SUB-SYSTEM	VE		DESIGNER	E.SANCHEZ
MATERIAL				N/A		FINISH	N/A μinch		NEXT ASSY	D1800238	
										DRFTER	E.SANCHEZ
										CHECKER	SEE DCC
										APPROVAL	SEE DCC
										SIZE	D
										DWG. NO.	D2000372
										REV.	v1
										SCALE: 1:1000	PROJECTION:
										SHEET 1 OF 4	







# SQZ FIBER ROUTING OPTIONS



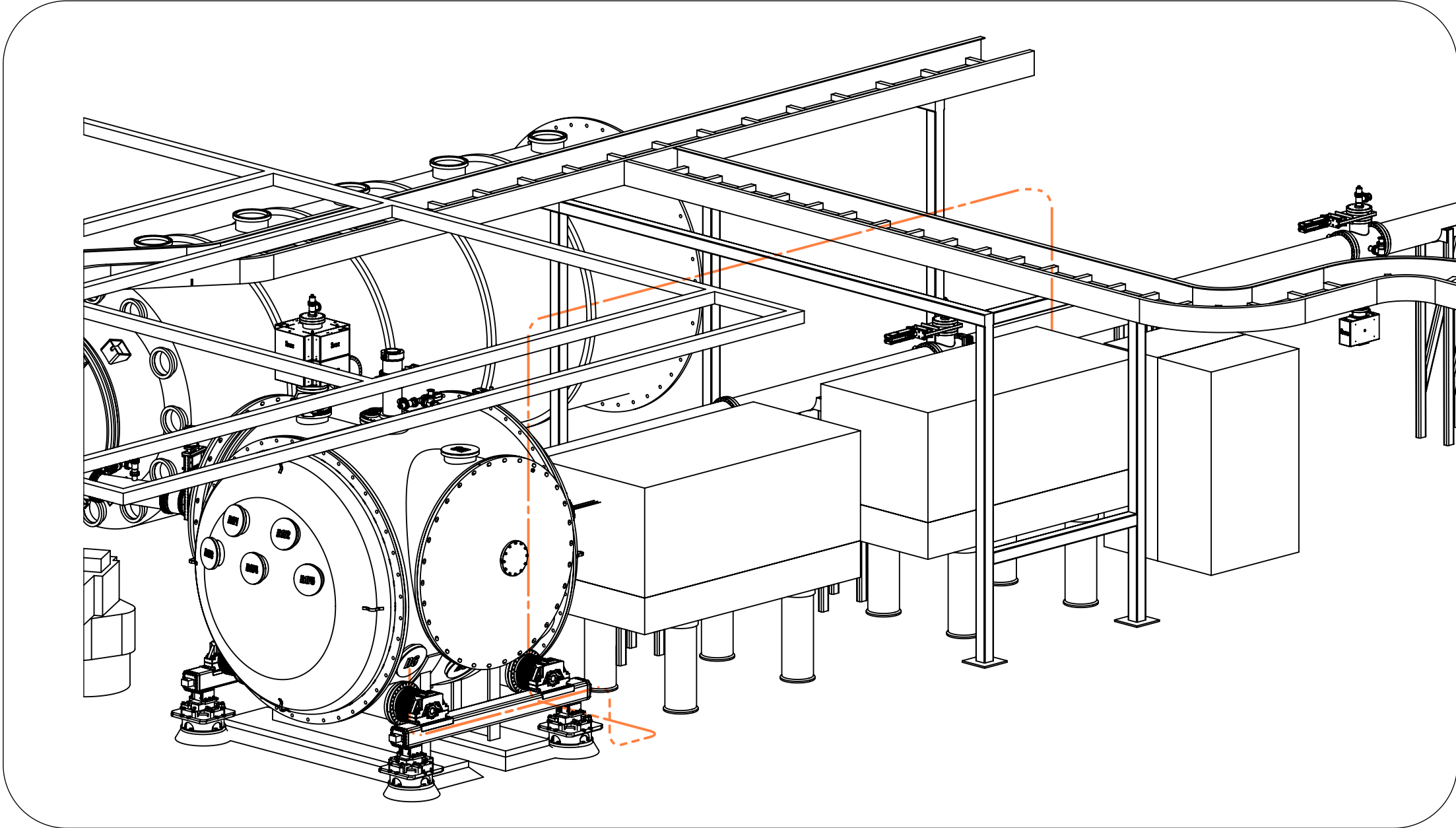
## FIBER ROUTE OPTION NO. 1

LENGHT = 45'-0"

(INCLUDES 15% SLACK PERCENTAGE)

(FIBER STARTS AT TOP OF SQZT0,

GETS THREADED DOWN THE TABLE AND RUNS ON THE GROUND BETWEEN EXISTING PIPING BRIDGE  
AND THE TABLE LEGS. THEN IT'S AFFIXED TO HAM7 EXTERNAL SUPPORT STRUCTURES  
AND TERMINATES IN D6)



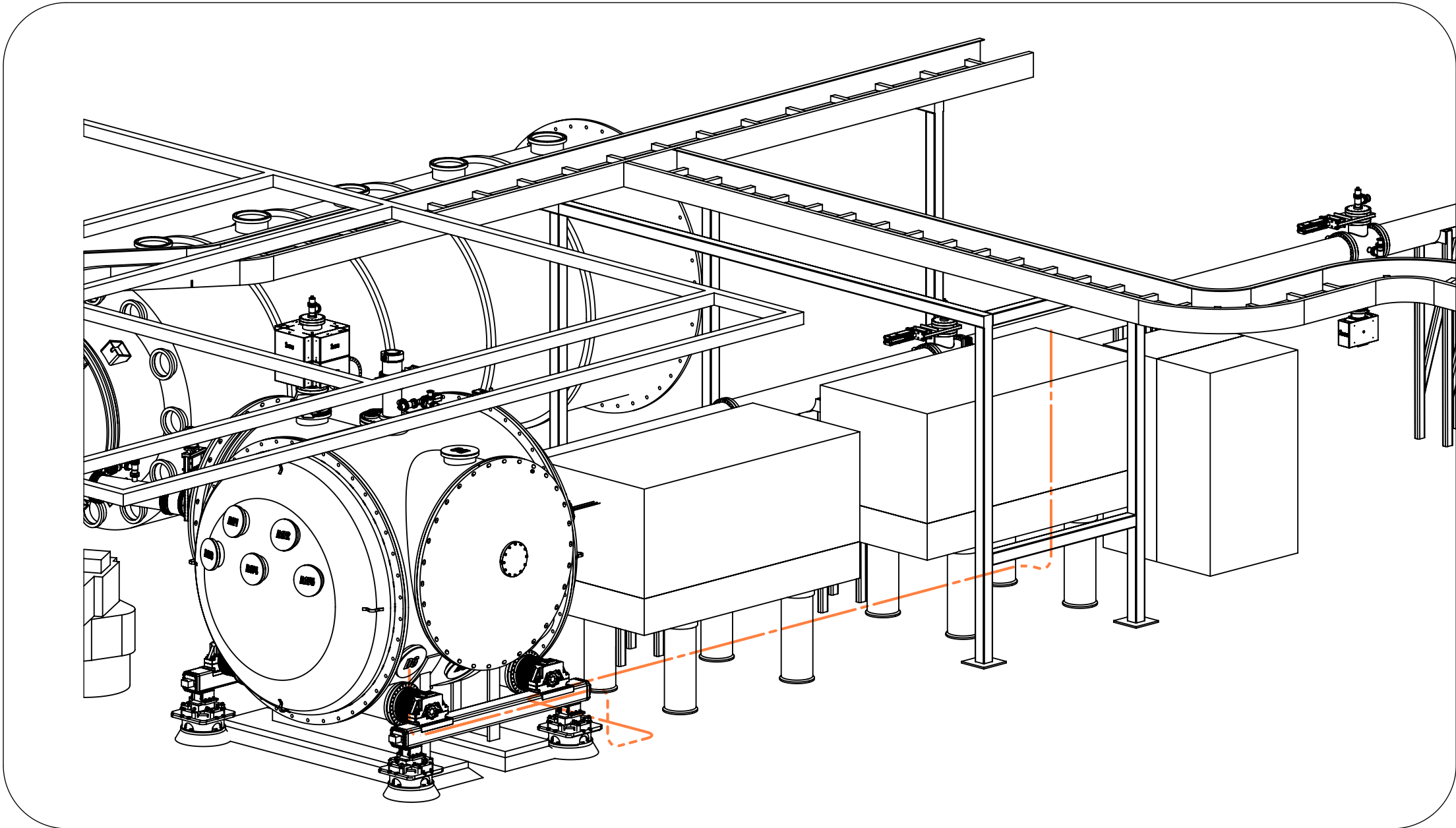
## FIBER ROUTE OPTION NO. 2

LENGHT = 59'-0"

(INCLUDES 15% SLACK PERCENTAGE)

(FIBER STARTS AT TOP SQZT0,

RUNS ACROSS THE LONG SIDE OF THE IN AIR TABLES ON NEW A+CABLE TRAY.  
IT GETS THREADED DOWN THE TABLE, AND CONTINUES ACROSS THE SHORT SIDE OF THE TABLE ON THE GROUND.  
AND IT'S AFFIXED TO HAM7 EXTERNAL SUPPORT STRUCTURES.  
IT TERMINATES IN D6)



## FIBER ROUTE OPTION NO. 3

LENGHT = 51'-0"

(INCLUDES 15% SLACK PERCENTAGE)

(FIBER STARTS AT TOP OF SQZT0,

GETS THREADED DOWN THE TABLE AND RUNS ON THE GROUND BETWEEN FC BEAM TUBE  
AND THE TABLE LEGS, CONTINUES ACROSS THE SHORT SIDE OF THE TABLE THEN IT'S AFFIXED TO HAM7 EXTERNAL SUPPORT STRUCTURES  
AND TERMINATES IN D6)