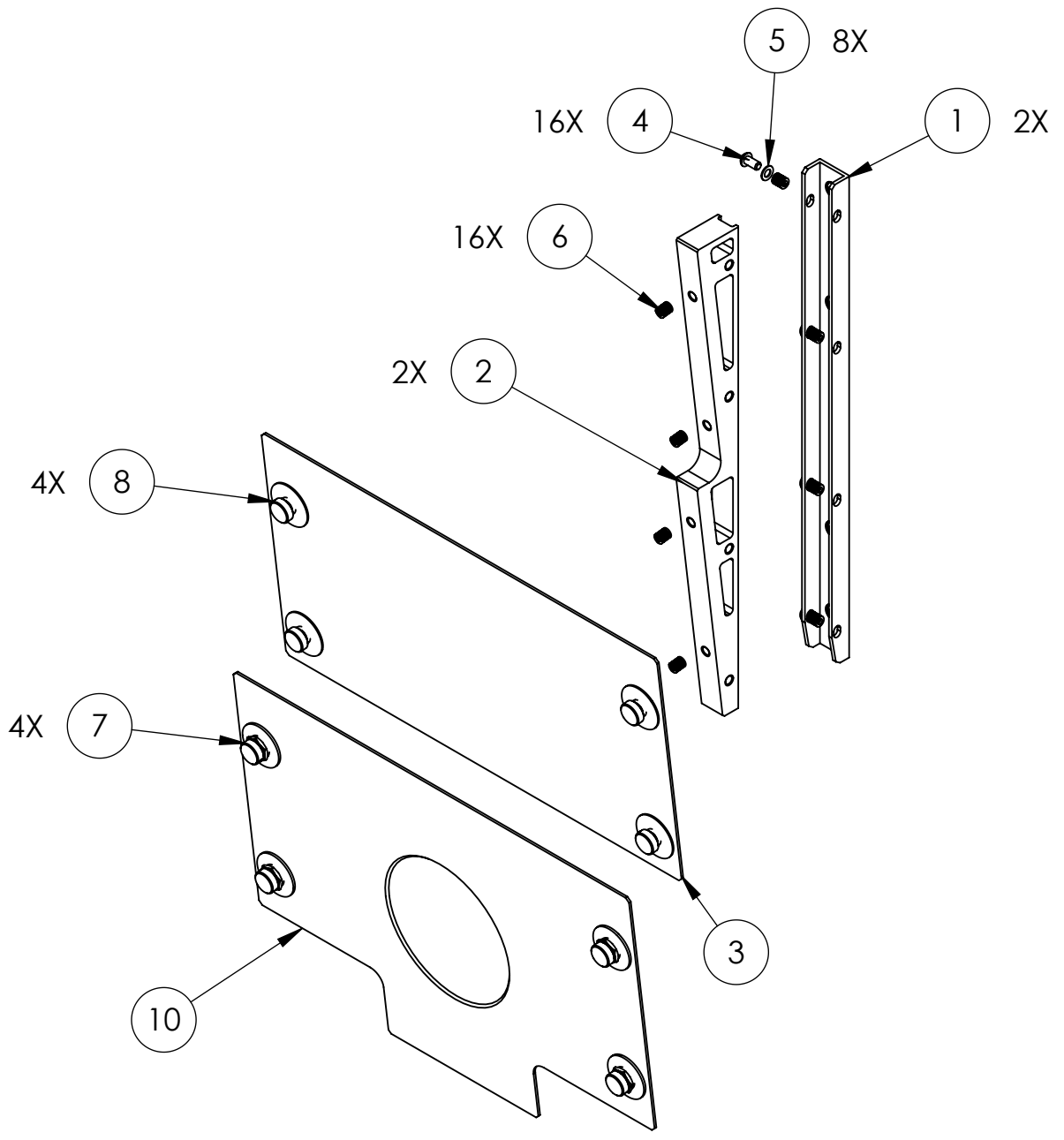
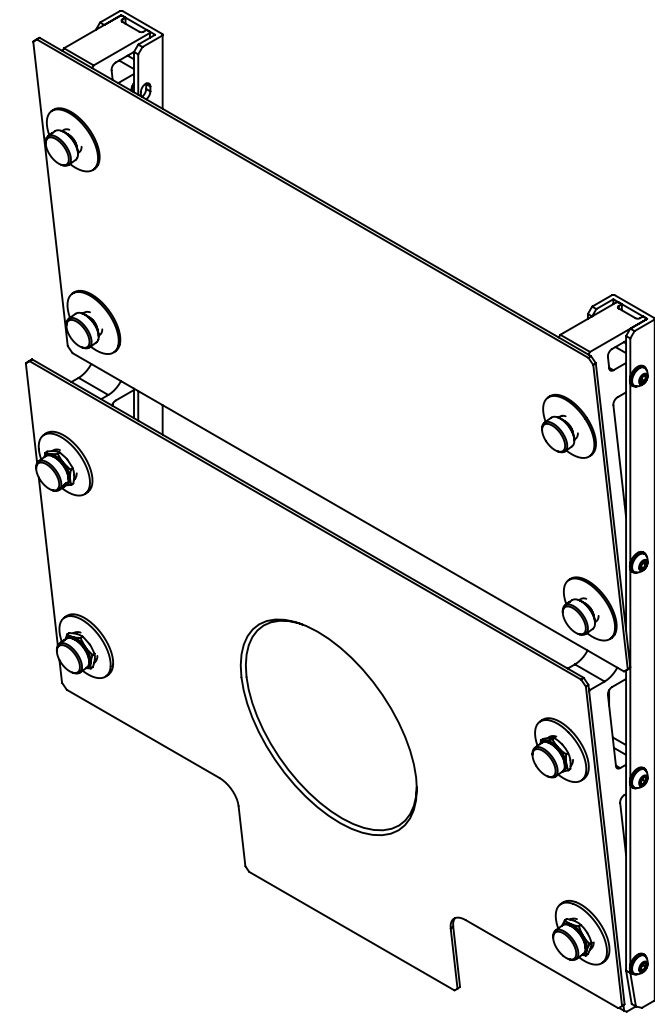


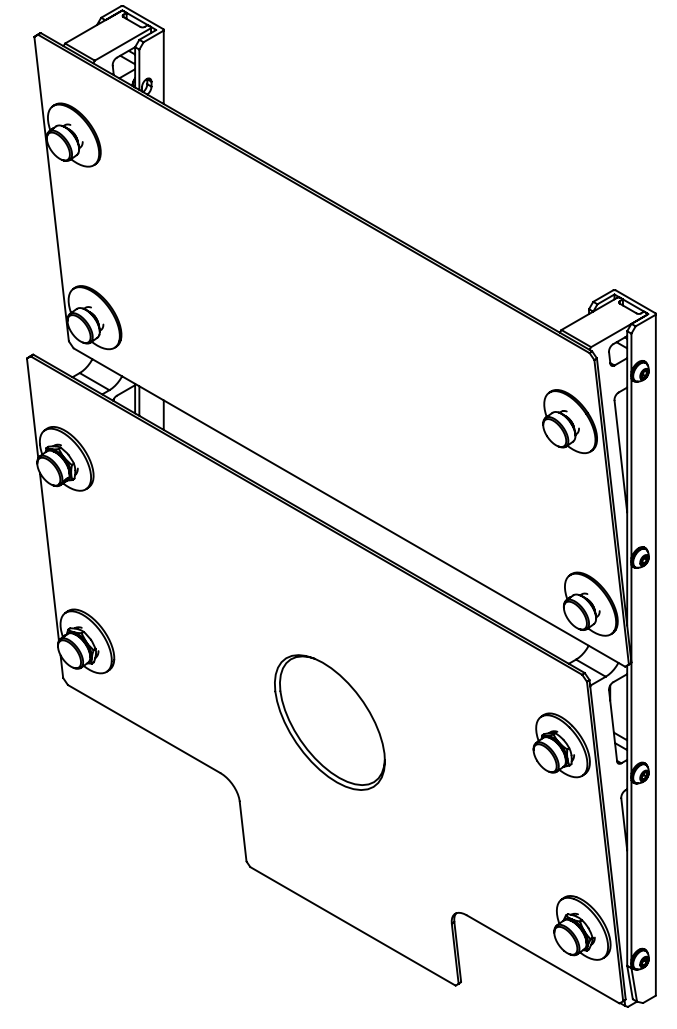
REV.	DATE	DCN #	DRAWING TREE #
v1	22 JUNE 2020	E2000329-x0	-
-	-	-	-
-	-	-	-



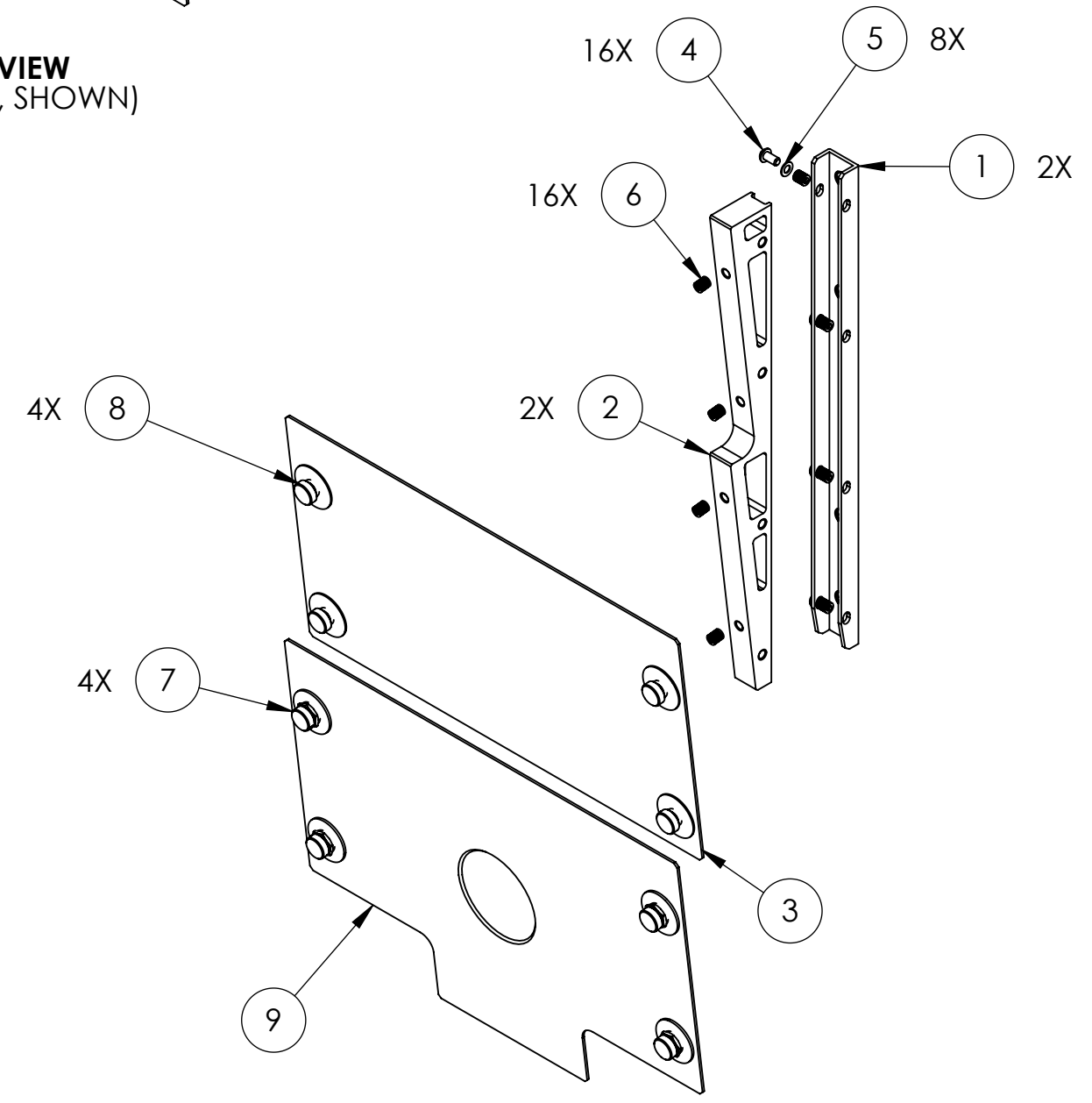
ISO VIEW
(-01 TYPE, SHOWN)



ISO VIEW, HR SIDE
(-01 TYPE, SHOWN)



ISO VIEW, AR SIDE
(-02 TYPE, SHOWN)



ISO VIEW
(-02 TYPE, SHOWN)

ITEM NO.	PART NUMBER	DESCRIPTION	MATERIAL	-01 TYPE/QTY.	-02 TYPE/QTY.
10	D2000114	A+ SUS, HSTS BOTTOM HR Baffle	304 SSSL	1	-
9	D2000115	A+ SUS, HSTS BOTTOM AR Baffle	304 SSSL	-	1
8	D1700232	aLIGO, SLiC, Bolt Assy., BN	N/A	4	4
7	D1700236	aLIGO, SLiC, Captured Shoulder Nut Assy.	N/A	4	4
6	91732A212	HELICOIL, 1/4-20 X .375 LG.	NITRONIC 60	16	16
5	90313A203	FLAT WASHER 1/4 SCREW SIZE	18-8 SSSL	8	8
4	BU-2008-NA	SCREW, BHC, 1/4-20 X .50 LG. (Ag PLATED)	Ag-PLATED 300 SSSL	16	16
3	D1700252	aLIGO, SLiC, HSTS Baffle (SRM, TOP)	304 SSSL	1	1
2	D2000458	A+, SLiC, HSTS Baffle Mounting Bracket	6061-T6 Al	2	2
1	D1700249	aLIGO, SLiC, HSTS, Baffle Mounting Rail	6063-T5	2	2

PARTS LIST

NOTES AND TOLERANCES: (UNLESS OTHERWISE SPECIFIED)

DIMENSIONS ARE IN INCHES

MATERIAL N/A FINISH N/A μ inch

LIGO CALIFORNIA INSTITUTE OF TECHNOLOGY
MASSACHUSETTS INSTITUTE OF TECHNOLOGY

SYSTEM A+ SUB-SYSTEM SUS NEXT ASSY

PART NAME A+, SUS, HSTS Baffle Assy.

DESIGNER D. PETERSON 11 MAR 2020 SIZE DWG. NO. c D1900497 REV. v1
DRAFTER D. PETERSON 16 JUL 2020
CHECKER SEE DCC SEE DCC
APPROVAL SEE DCC SEE DCC SCALE: 1:5 PROJECTION: SHEET 1 OF 1