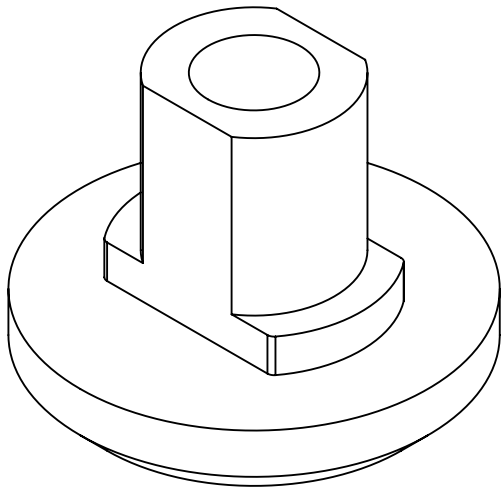


NOTES CONTINUED:
⑤ SCRIBE, ENGRAVE, LASER MARK OR MECHANICALLY STAMP (NO DYES OR INKS) A UNIQUE THREE DIGIT SERIAL NUMBER & REVISION NUMBER ON EACH PART. SERIAL NUMBERS START AT 001 FOR THE FIRST ARTICLE AND PROCEED CONSECUTIVELY. BAG AND TAG PARTS WITH THEIR DRAWING PART NUMBER, REVISION, VARIANT OR "TYPE" (IF APPLICABLE), AND QUANTITY. IF PARTS ARE TOO SMALL TO SCRIBE, BAGGING AND TAGGING ALONE IS SUFFICIENT.
EXAMPLE (PART): 001-v1
EXAMPLE (TAG): DXXXXXX-VY, TYPE-XX, QTY: TBD

REV.	DATE	DCN #	DRAWING TREE #
v1	09 JUN 2020	E2000291	
v2	21 JUL 2020	E2000390	
v6	10 JUNE 2022	E2200259-v0	

- D
6. APPROXIMATE WEIGHT = 3.19 g
7. MACHINE ALL SURFACES TO REMOVE OXIDES AND MILL FINISH. USE OF ABRASIVE REMOVAL TECHNIQUES IS NOT ALLOWED.
REFER TO MANUFACTURING SPECIFICATION E2200225
8. ALL PARTS SHALL BE MANUFACTURED IN ACCORDANCE WITH
MANUFACTURING SPECIFICATION E2200225
9. ALL MATERIAL IS TO BE VIRGIN MATERIAL (i.e. NO WELD REPAIRS, PLUGS OR RECYCLED MATERIAL). NO REPAIRS SHALL BE MADE UNLESS APPROVED IN ADVANCE, AND IN WRITING, BY LIGO LABORATORY.
REFER TO MANUFACTURING SPECIFICATION E2200225
10. DUAL DIMENSIONED CALLOUTS IN THE FORMAT x.xxx" [x.x] ARE TO BE MACHINED USING IMPERIAL TOOLING

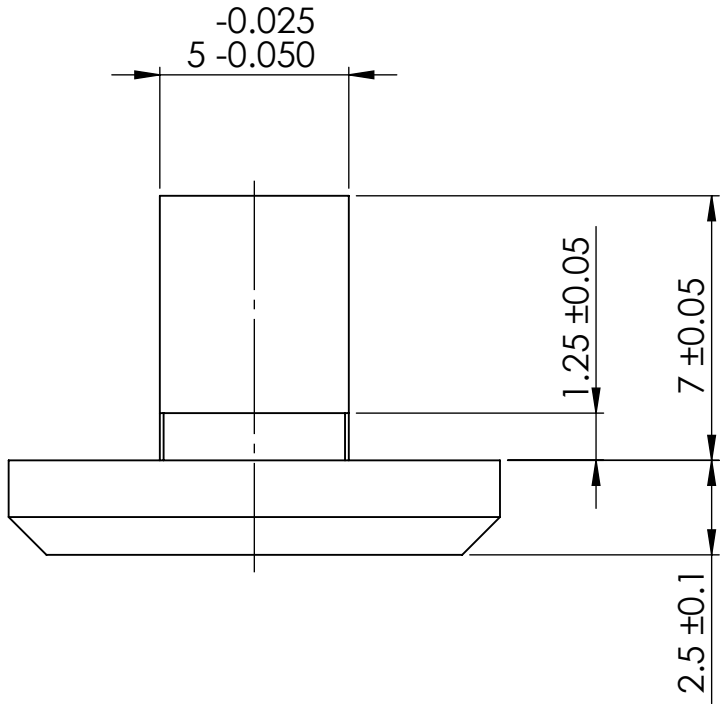
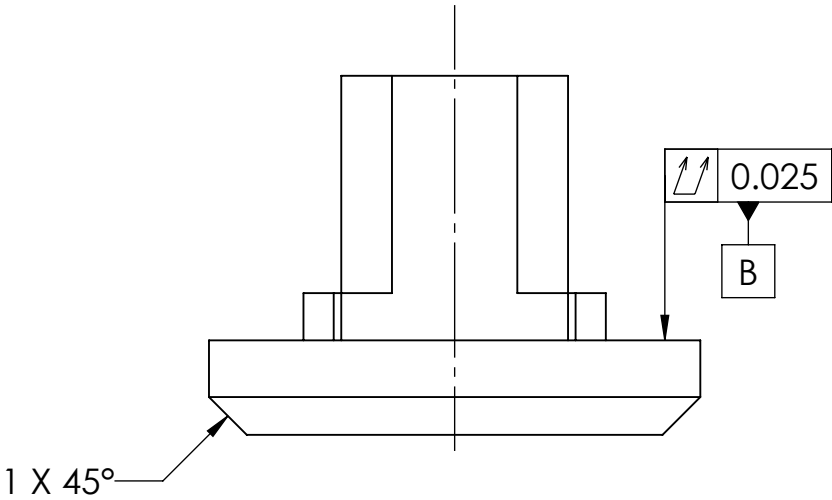
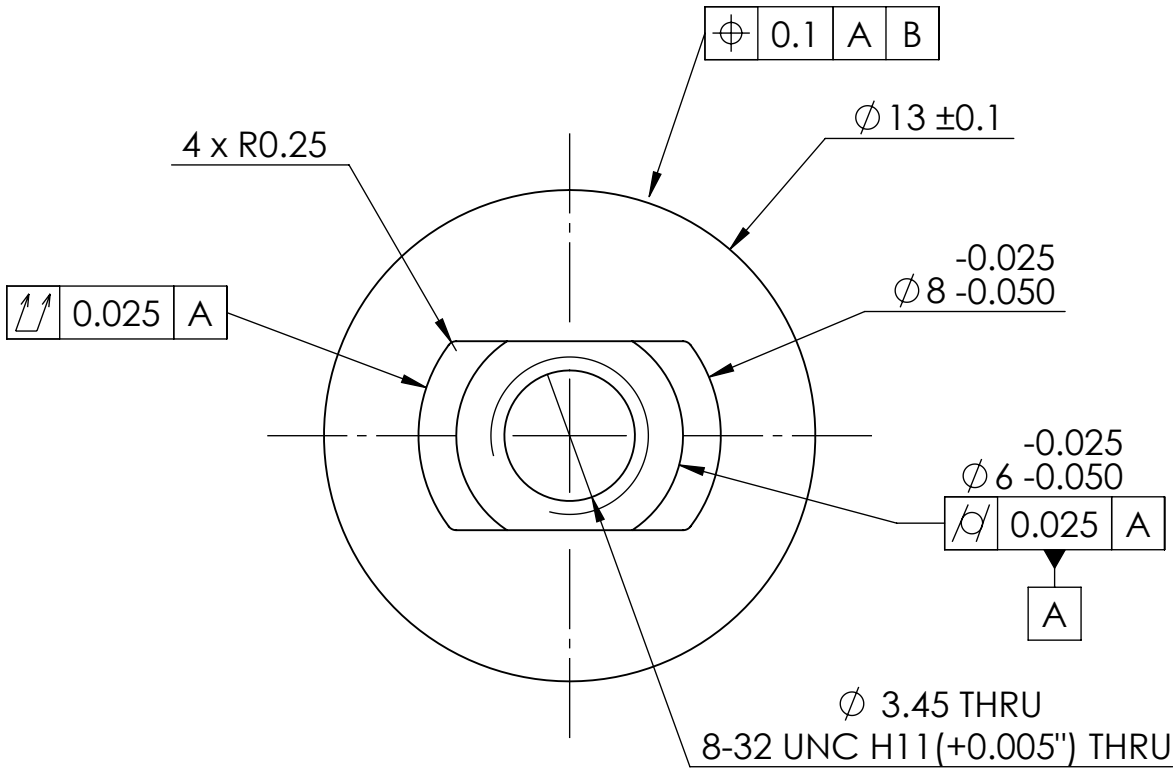
C



ISO MODEL VIEW
SCALE 5:1

B

A



D

C

B

A

NOTES AND TOLERANCES: (UNLESS OTHERWISE SPECIFIED)				PART NAME			
DIMENSIONS ARE IN MILLIMETERS				A+, SUS, BOSEM ADJUSTER LOCK-OFF NUT			
TOLERANCES: .X ± 0.1 .XX ± 0.05				DESIGNER A. HUDDART 04 SEP 2019			
ANGULAR ± 0.2°				DRAFTER A. HUDDART 10 JUNE 2022			
MATERIAL NITRONIC 60				CHECKER J.ODELL 12 JULY 2022			
FINISH 1.6 μm				APPROVAL J.ODELL 12 JULY 2022			
NEXT ASSY MULTIPLE				SCALE: 5:1 PROJECTION:			
				SHEET 1 OF 1			