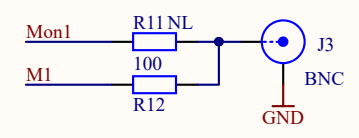
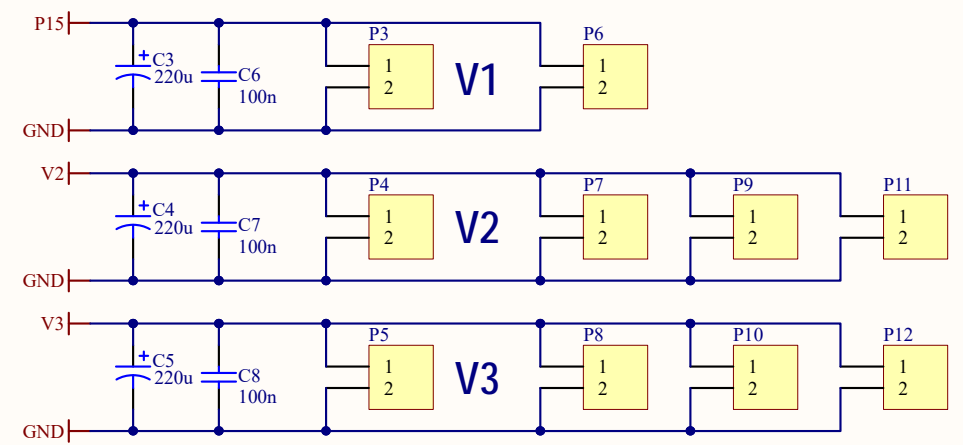
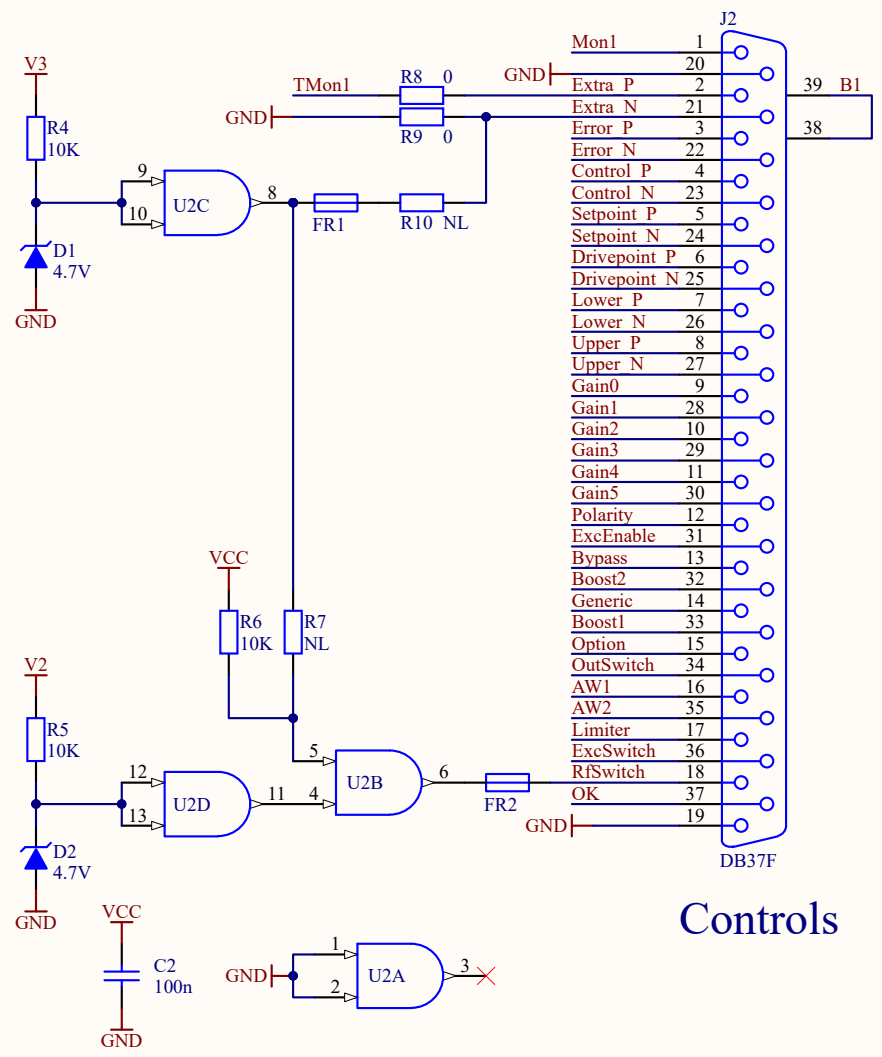
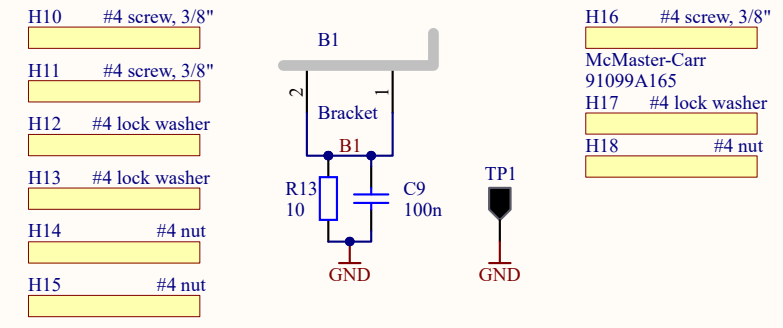
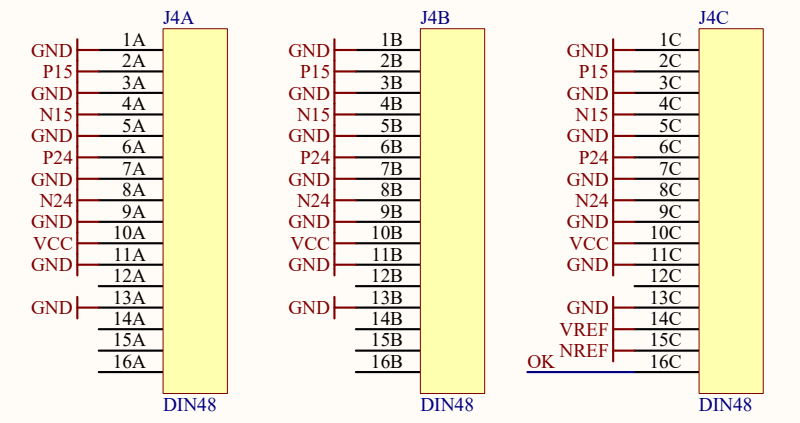
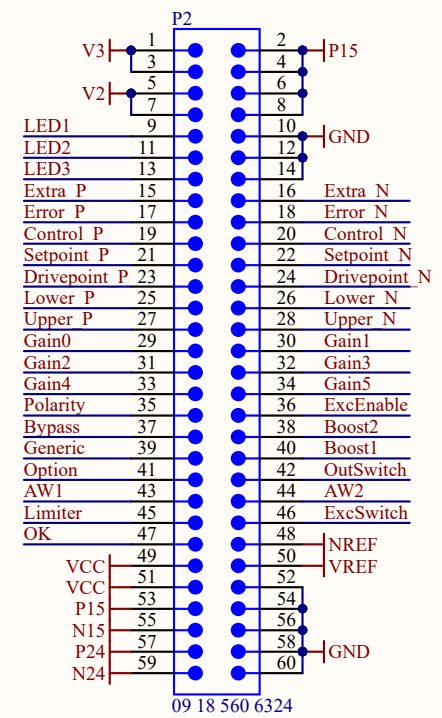
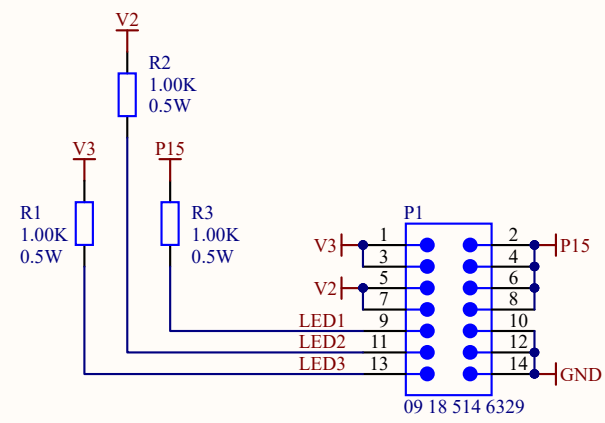
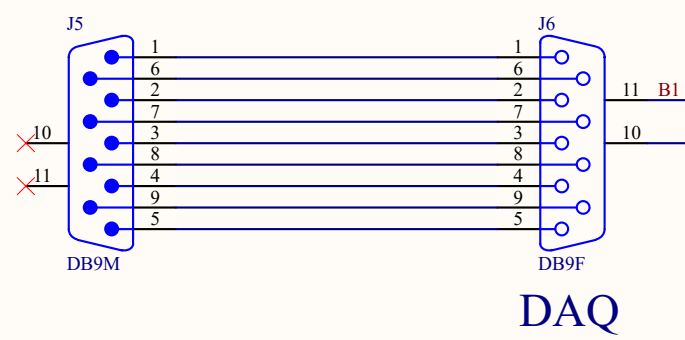
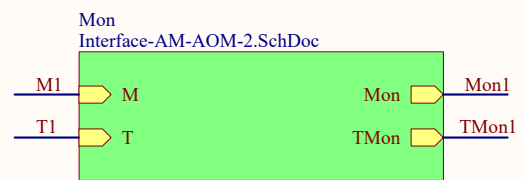


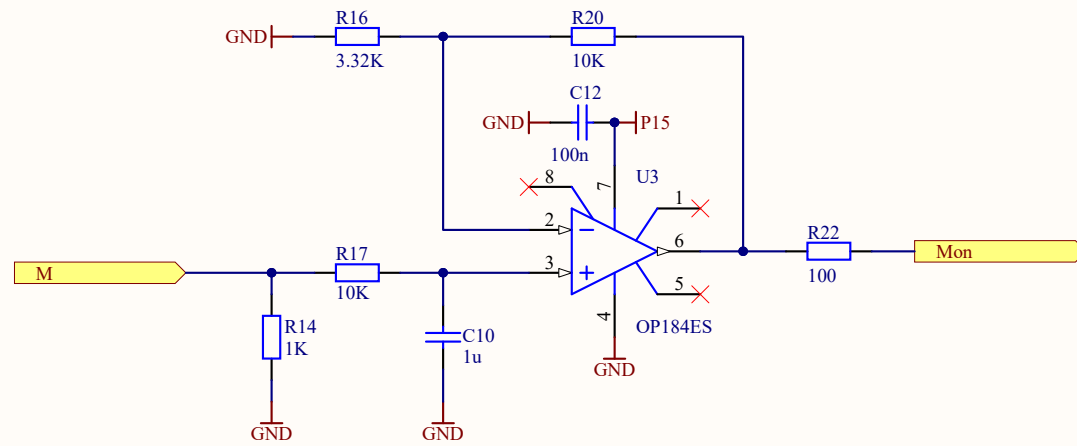
- H1 M2.5 screw, 8mm
- H2 M2.5 lock washer
- H3 M2.5 nut
- H4 M2.5 screw, 8mm
- H5 M2.5 lock washer
- H6 M2.5 nut
- H7 M2.5 screw, 8mm
- H8 M2.5 lock washer
- H9 M2.5 nut



To make the BNC output a slow monitor:
Move R4 to R5.

The fast monitors have 4x less gain than the slow ones.

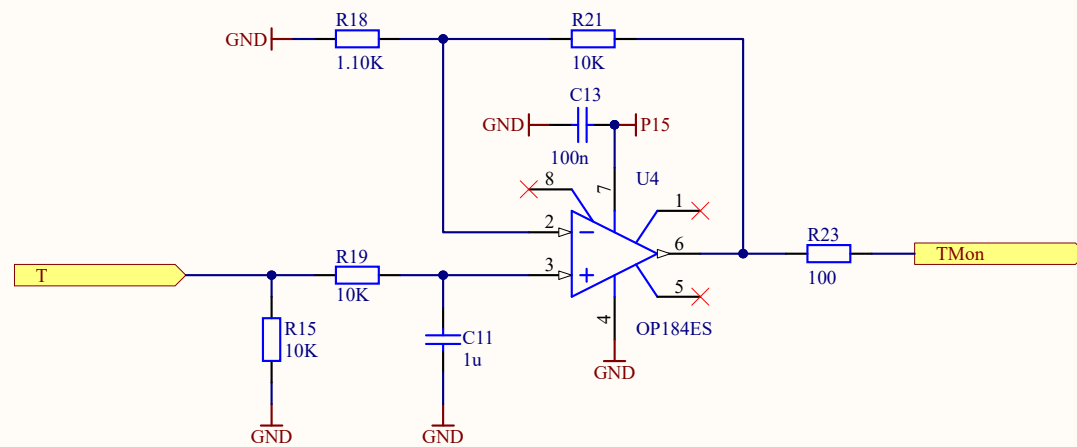
Title		
AM AOM Interface		
Size	Number	Revision
B	D1900329	1
Date:	7/30/2019	Sheet 1 2of
File:	C:\Users\...\Interface-AM-AOM-1.SchDoc	Drawn By: Daniel Sigg



30 dBm	2.3V
20 dBm	3.2V
10 dBm	4.2V
0 dBm	5.2V
-10 dBm	6.2V
-20 dBm	7.2V
-30 dBm	8.0V

nominal slope: -100mV/dBm

$$P = 12 \text{ dBm} - 10 \text{ dBm/V} * (U - 4V)$$



$$T = 20^{\circ}\text{C} + 50^{\circ}\text{C/V} * (U - 6V)$$

Title		
AM AOM Interface		
Size	Number	Revision
B	D1900329	1
Date:	7/30/2019	Sheet 2 2of
File:	C:\Users\...\Interface-AM-AOM-2.SchDoc Drawn By: Daniel Sigg	