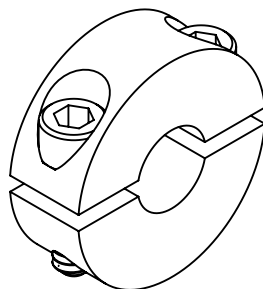


NOTES CONTINUED:

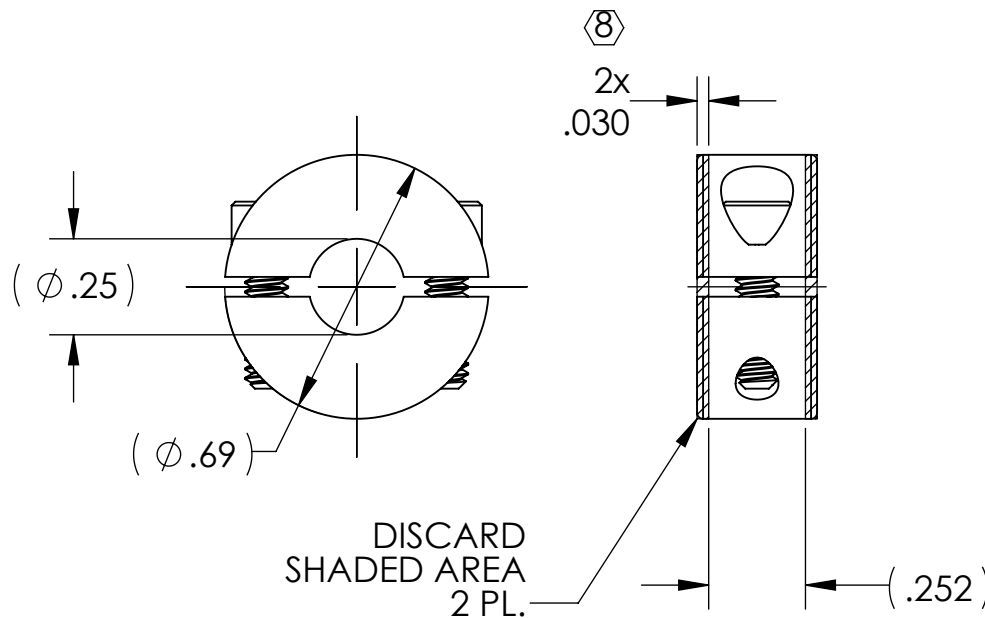
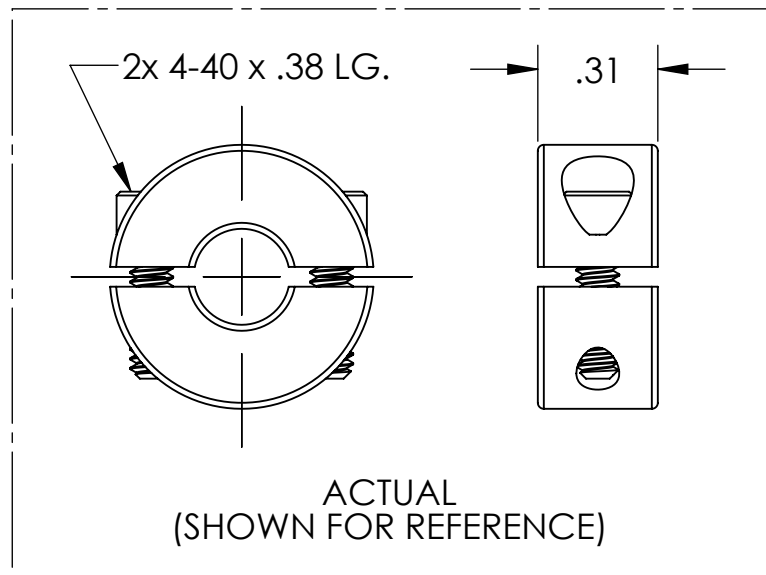
Ⓢ BAG AND TAG WITH THEIR PDRAWING PART NUMBER, REVISION, VARIANT OR "TYPE" (IF APPLICABLE), AND QUANTITY.
 EXAMPLE (PART): 001-v1
 EXAMPLE (TAG): DXXXXXX-VY, TYPE-XX, QTY:TBD

- 6. MAKE FROM: MCMMASTER-CARR
PART NO. 6436K131
Clamping Two-Piece Shaft Collar
- 7. SURFACE FINISH TO BE AS-PROCESSED FROM MILL/SUPPLIER, FREE FROM SCRATCHES OR GOUGES.
- Ⓢ WHILE CLAMPED ON A 1/4" SHAFT.

REV.	DATE	DCN #	DRAWING TREE #
v1	22 AUG 2018	E1800247-x0	-
-	-	-	-
-	-	-	-



ISO VIEW



ALTERED VENDOR PART DRAWING

NOTES AND TOLERANCES: (UNLESS OTHERWISE SPECIFIED)

DIMENSIONS ARE IN INCHES

TOLERANCES:

.XX ± .01
 .XXX ± .005

ANGULAR ± 0.5°

- 1. INTERPRET DRAWING PER ASME Y14.5-1994.
- 2. REMOVE ALL SHARP EDGES .005-.015. FOR MACHINED PARTS. ROUND ALL EDGES APPROXIMATELY R.02 FOR SHEET METAL PARTS.
- 3. DO NOT SCALE FROM DRAWING.
- 4. ALL MACHINING FLUIDS MUST BE FULLY SYNTHETIC, FULLY WATER SOLUBLE AND FREE OF SULFUR, SILICONE, AND CHLORINE.

MATERIAL 2024-T351 Al FINISH N/A μinch

LIGO CALIFORNIA INSTITUTE OF TECHNOLOGY
 MASSACHUSETTS INSTITUTE OF TECHNOLOGY

SYSTEM ADVANCED LIGO SUB-SYSTEM SYS
 NEXT ASSY MULTIPLE

PART NAME		aLIGO, Picomotor, Clamping Two-Piece Shaft Collar (Altered)	
DESIGNER	N/A	N/A	SIZE DWG. NO.
DRAFTER	E.SANCHEZ	22 AUG 2018	D1800220
CHECKER	SEE DCC	SEE DCC	REV. v1
APPROVAL	SEE DCC	SEE DCC	SCALE: 2:1 PROJECTION: SHEET 1 OF 1