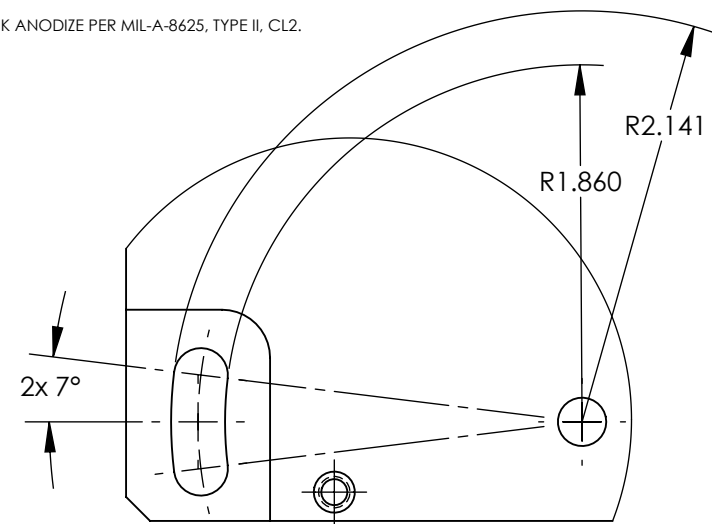


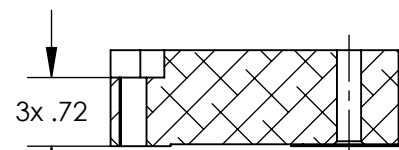
**NOTES CONTINUED:**  
 5. SCRIBE, ENGRAVE (A VIBRATORY TOOL MAY BE USED), LASER MARK OR MECHANICALLY STAMP (NO INKS OR DYES) DRAWING PART NUMBER, REVISION (AND VARIANT OR "TYPE" IF APPLICABLE) ON NOTED SURFACE OF PART FOLLOWED ON THE NEXT LINE WITH A THREE DIGIT SERIAL NUMBER. SERIAL NUMBERS START AT 001 FOR THE FIRST ARTICLE AND PROCEED CONSECUTIVELY. USE MINIMUM 0.12" HIGH CHARACTERS, UNLESS THE SIZE OF THE PART DICTATES SMALLER CHARACTERS. EXAMPLE: DXXXXXX-VY, TYPE-XX, S/N XXX

- 6. MASK TAPPED HOLES PRIOR TO NOTE NO. 7
- 7. FINISH: BLACK ANODIZE PER MIL-A-8625, TYPE II, CL2.

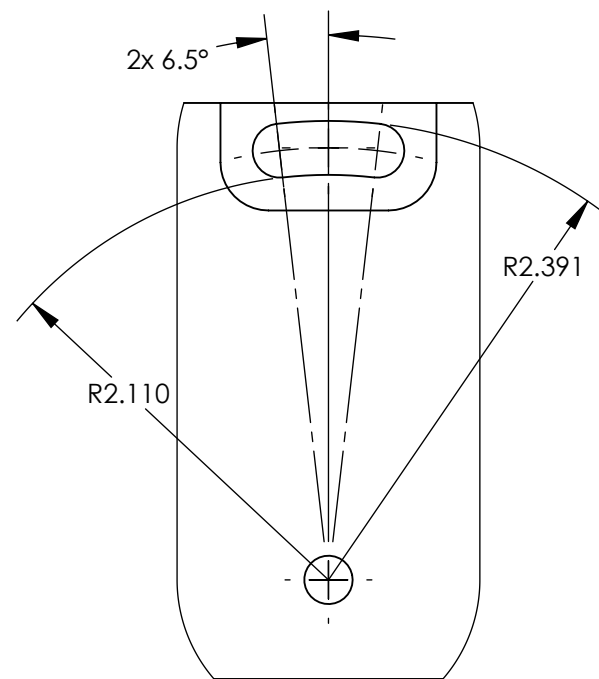
REV.	DATE	DCN #	DRAWING TREE #
v1	10 JUL 2018	E1800208-x0	-
-	-	-	-
-	-	-	-



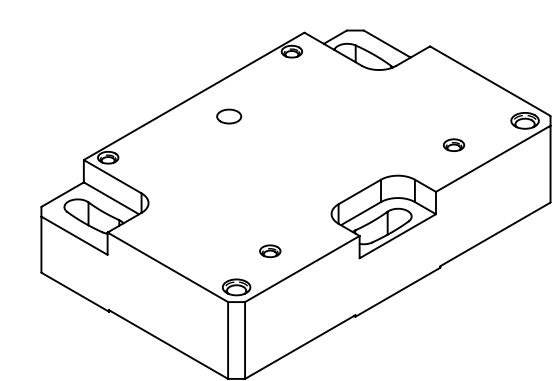
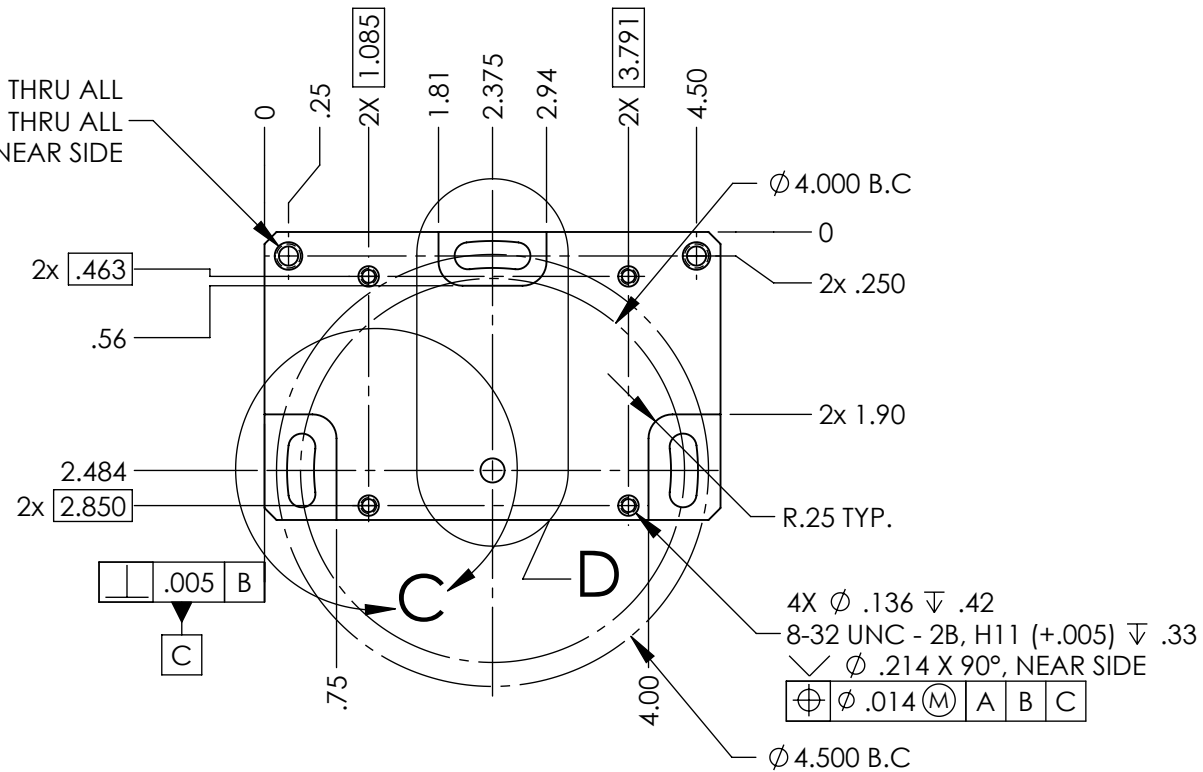
**DETAIL C**  
SCALE 1 : 1  
2 PL.



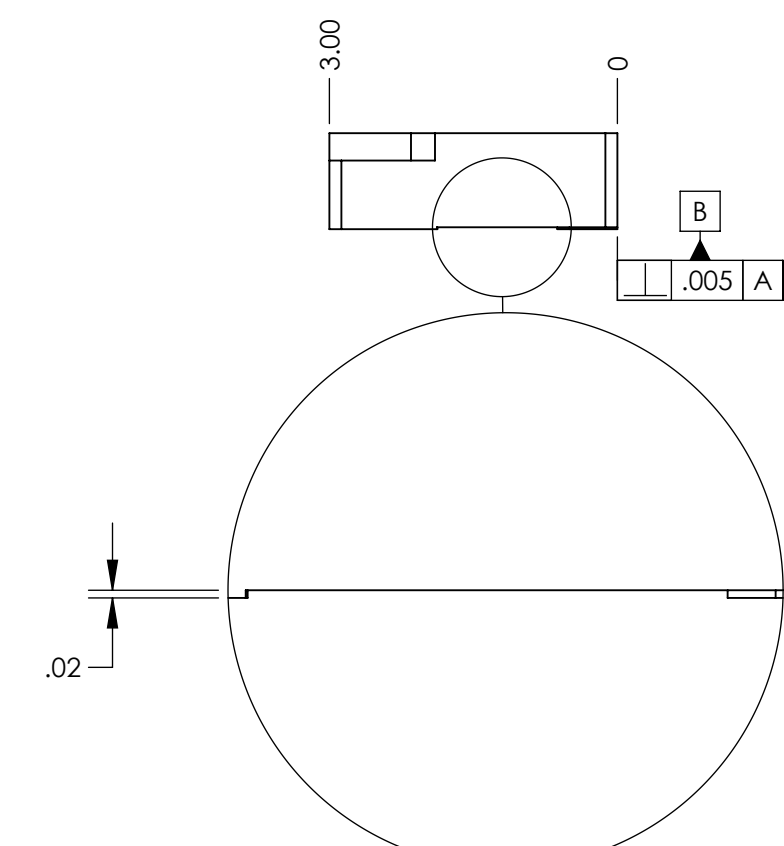
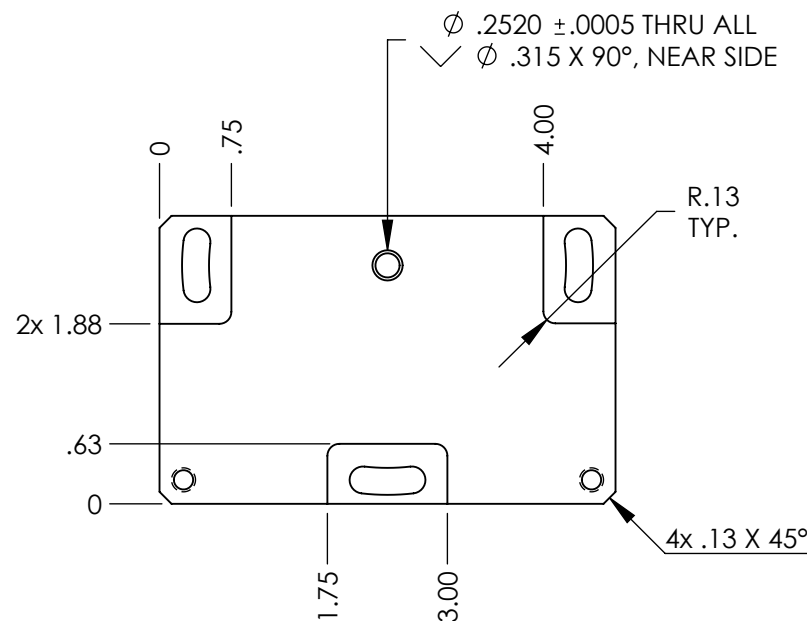
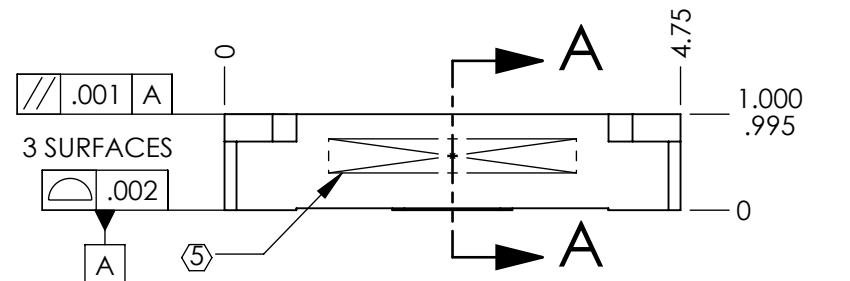
**SECTION A-A**



**DETAIL D**  
SCALE 1 : 1



**ISO VIEW**



**DETAIL B**  
SCALE 2 : 1  
TYP.

**NOTES AND TOLERANCES: (UNLESS OTHERWISE SPECIFIED)**

DIMENSIONS ARE IN INCHES

TOLERANCES:  
 .XX ± .01  
 .XXX ± .005

ANGULAR ± 0.5°

1. INTERPRET DRAWING PER ASME Y14.5-1994.  
 2. REMOVE ALL SHARP EDGES, .005-.015, FOR MACHINED PARTS.  
 3. DO NOT SCALE FROM DRAWING.  
 4. (DELETED)

**MATERIAL** 6061-T6 Al

**FINISH** 63 μinch

**LIGO** CALIFORNIA INSTITUTE OF TECHNOLOGY  
 MASSACHUSETTS INSTITUTE OF TECHNOLOGY

**SYSTEM** ADVANCED LIGO

**SUB-SYSTEM** IO

**NEXT ASSY** D1800172

PART NAME			
IO, EOM, Rotatable Block			
<b>DESIGNER</b>	E.SANCHEZ	11 JUN 2018	<b>SIZE DWG. NO.</b>
<b>DRAFTER</b>	E.SANCHEZ	10 JUL 2018	<b>B</b>
<b>CHECKER</b>	SEE DCC	SEE DCC	<b>D1800190</b>
<b>APPROVAL</b>	SEE DCC	SEE DCC	<b>REV.</b> v1
<b>SCALE:</b> 1:2	<b>PROJECTION:</b>	<b>SHEET 1 OF 1</b>	

D1800190 IO, EOM, Rotatable Block, PART PDM REV: X-000, DRAWING PDM REV: X-000