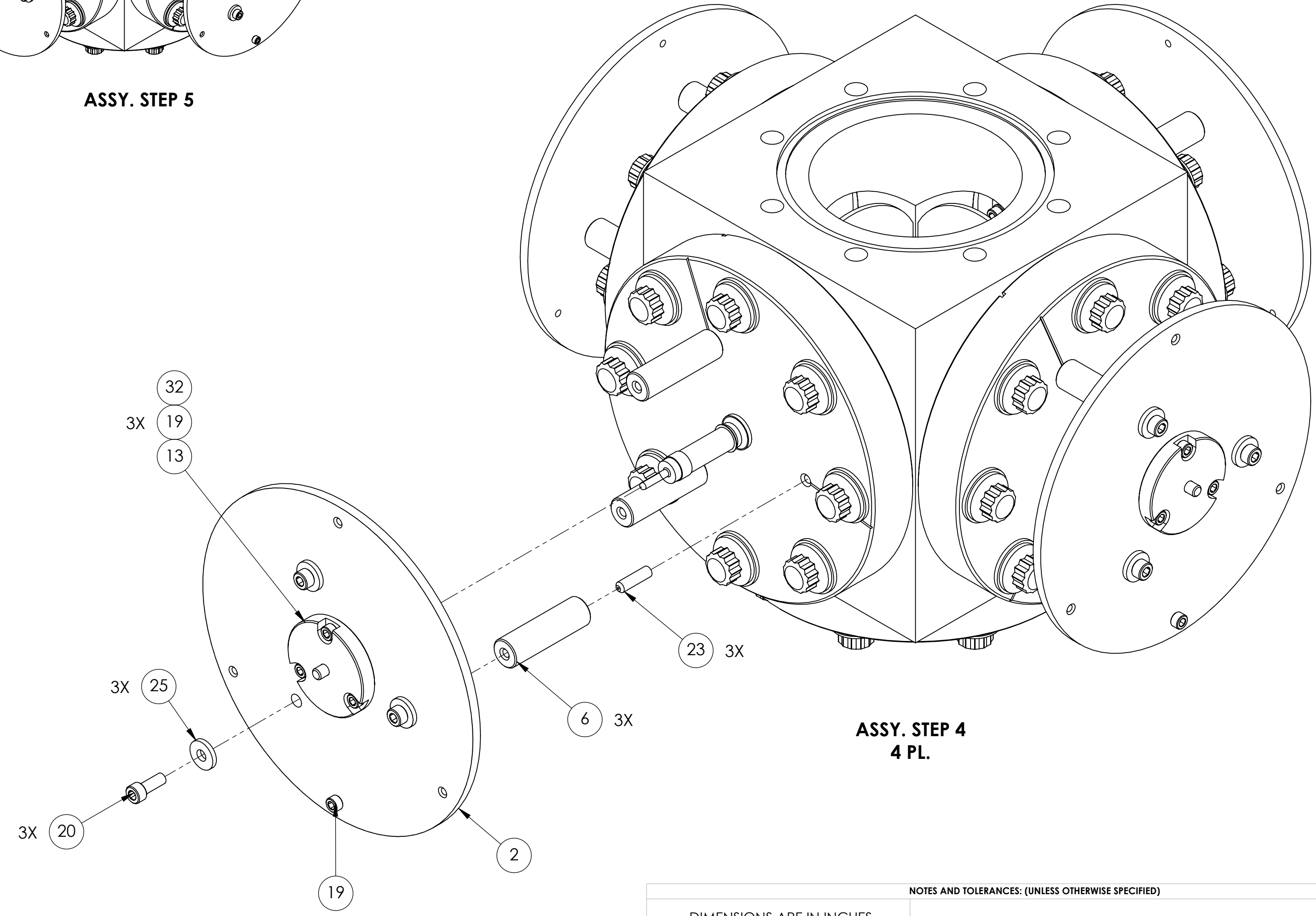
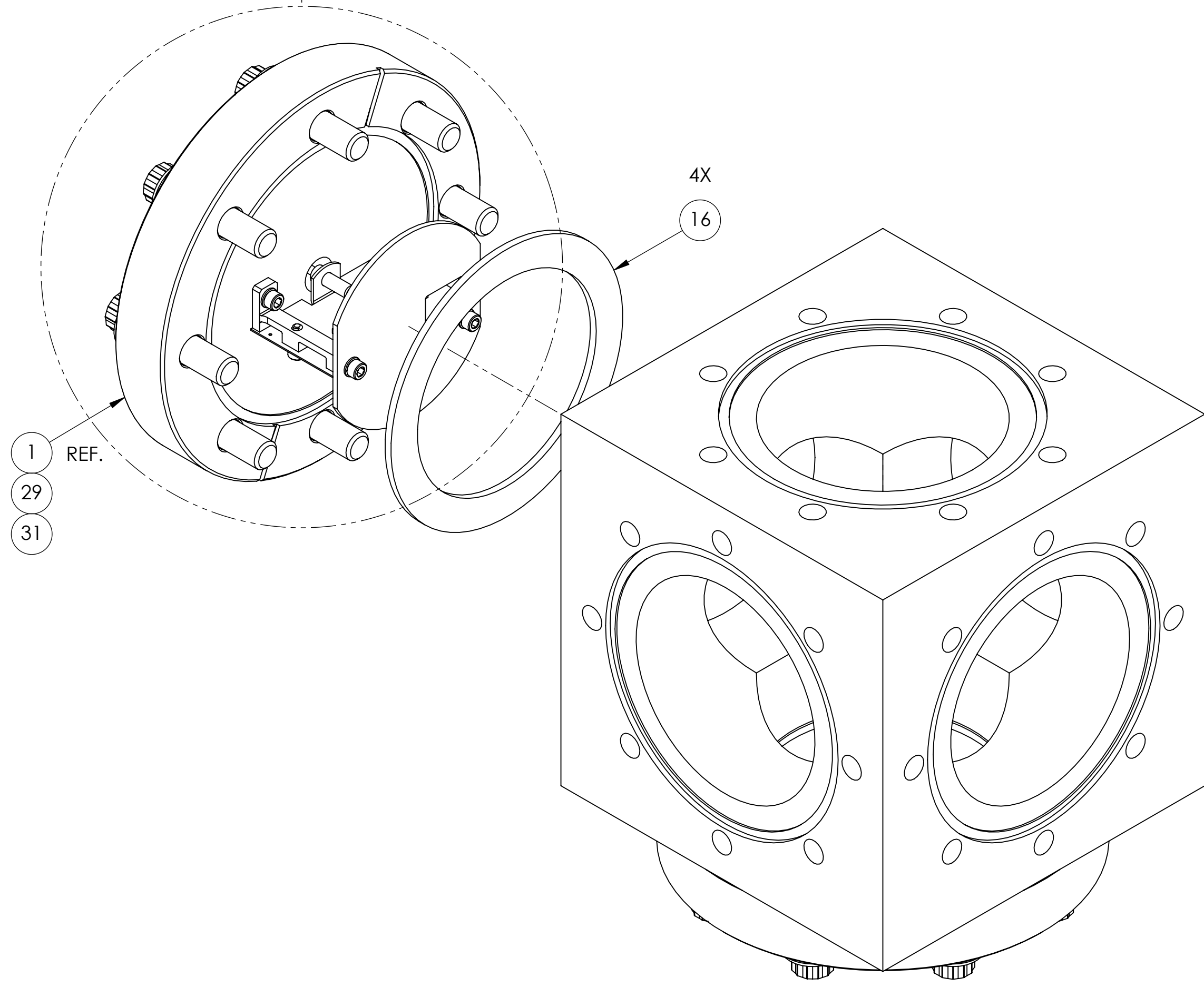
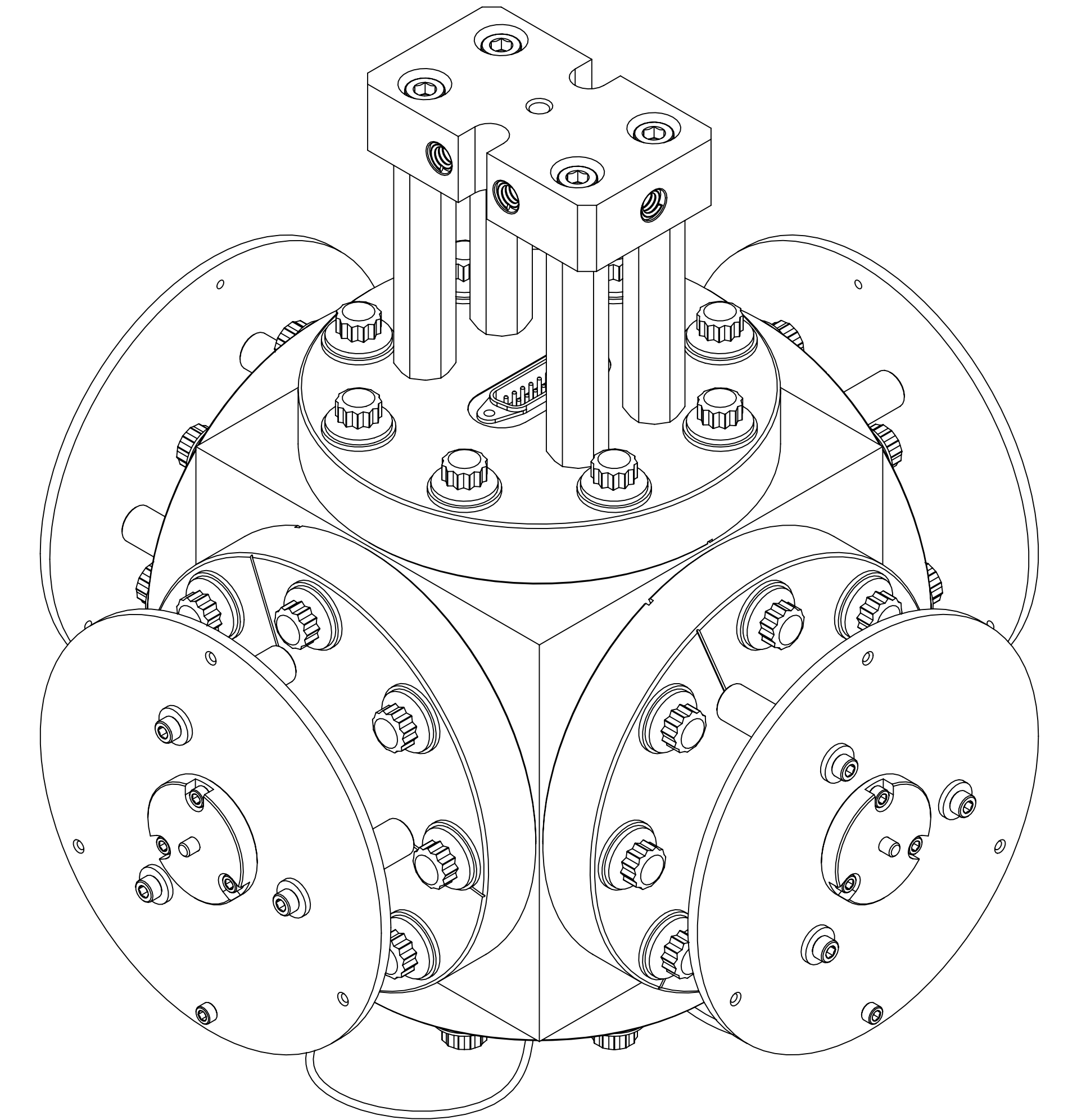
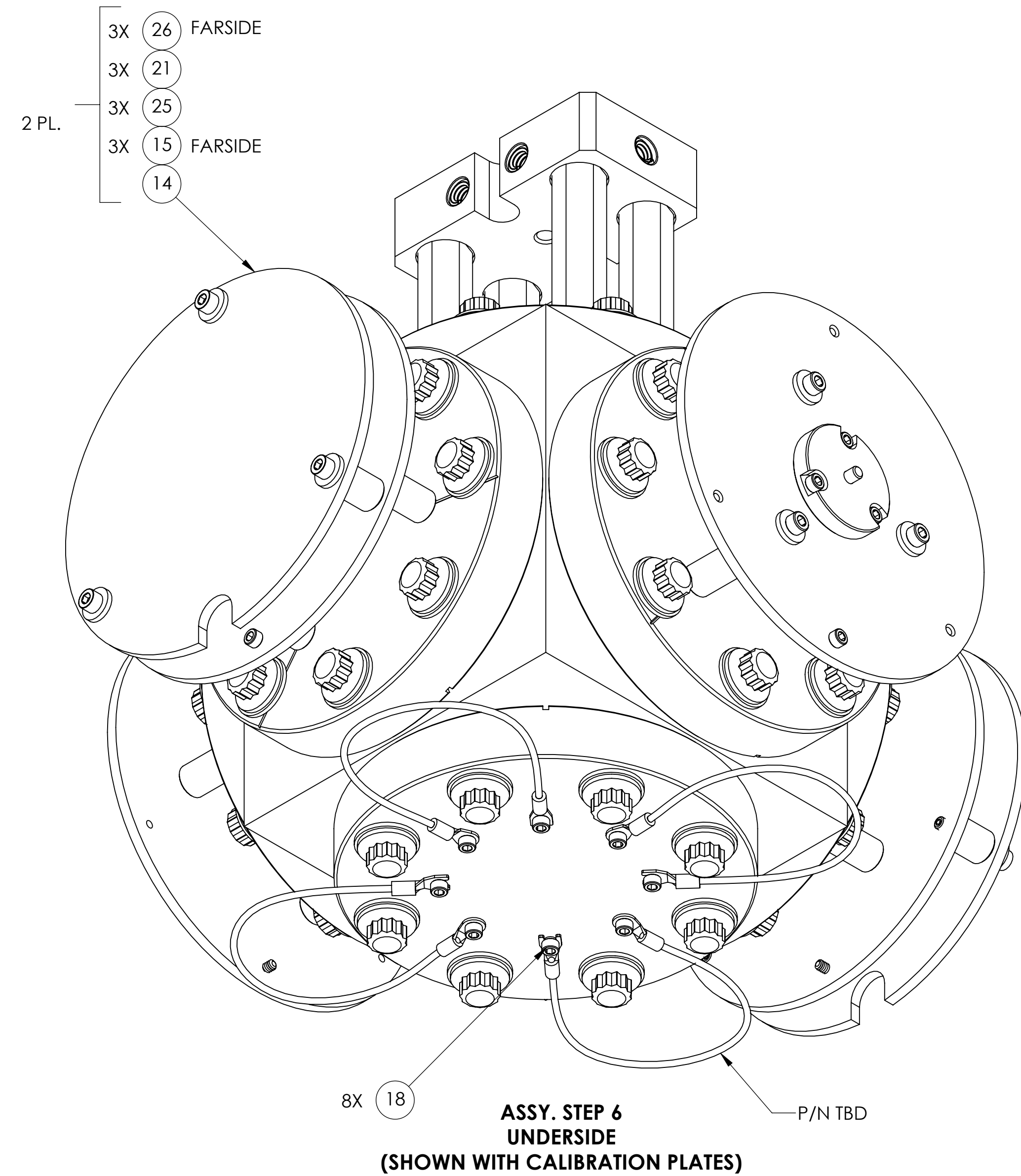
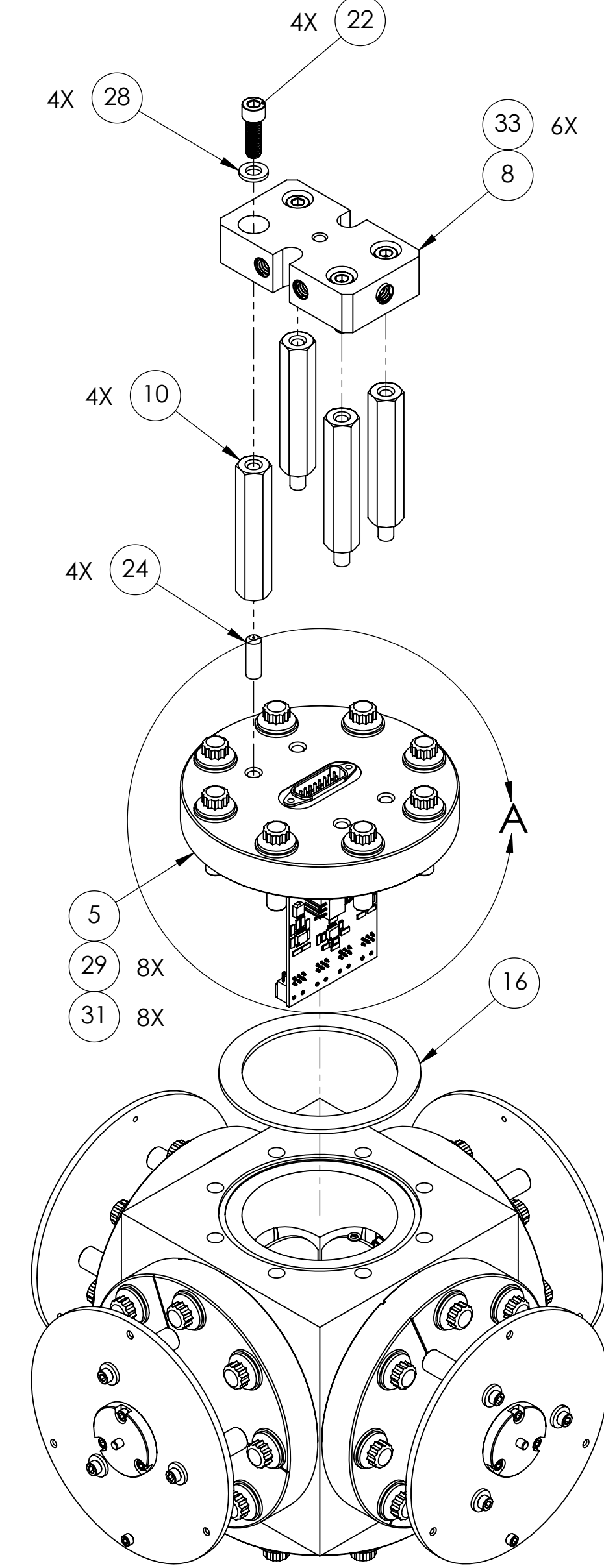
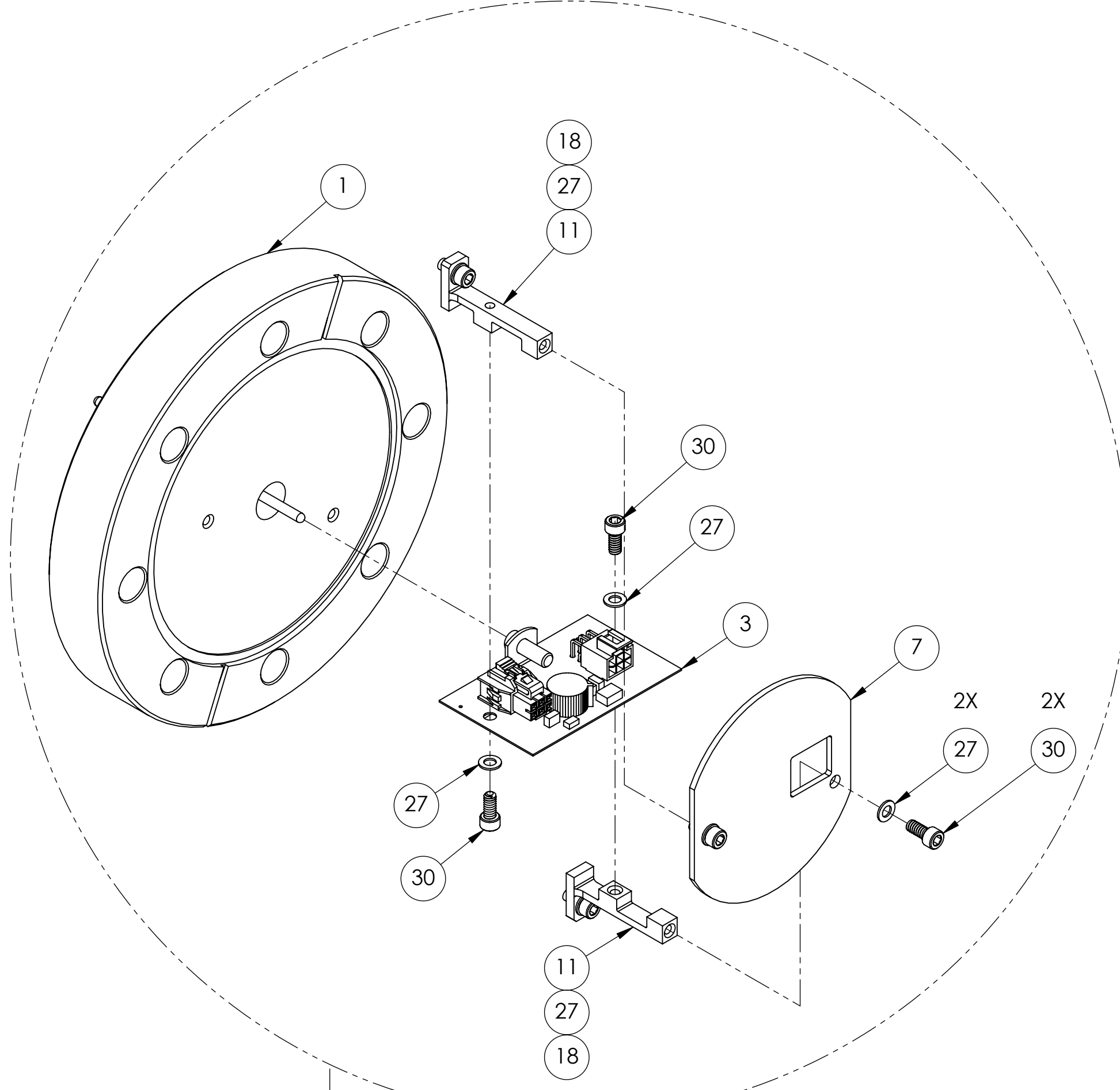
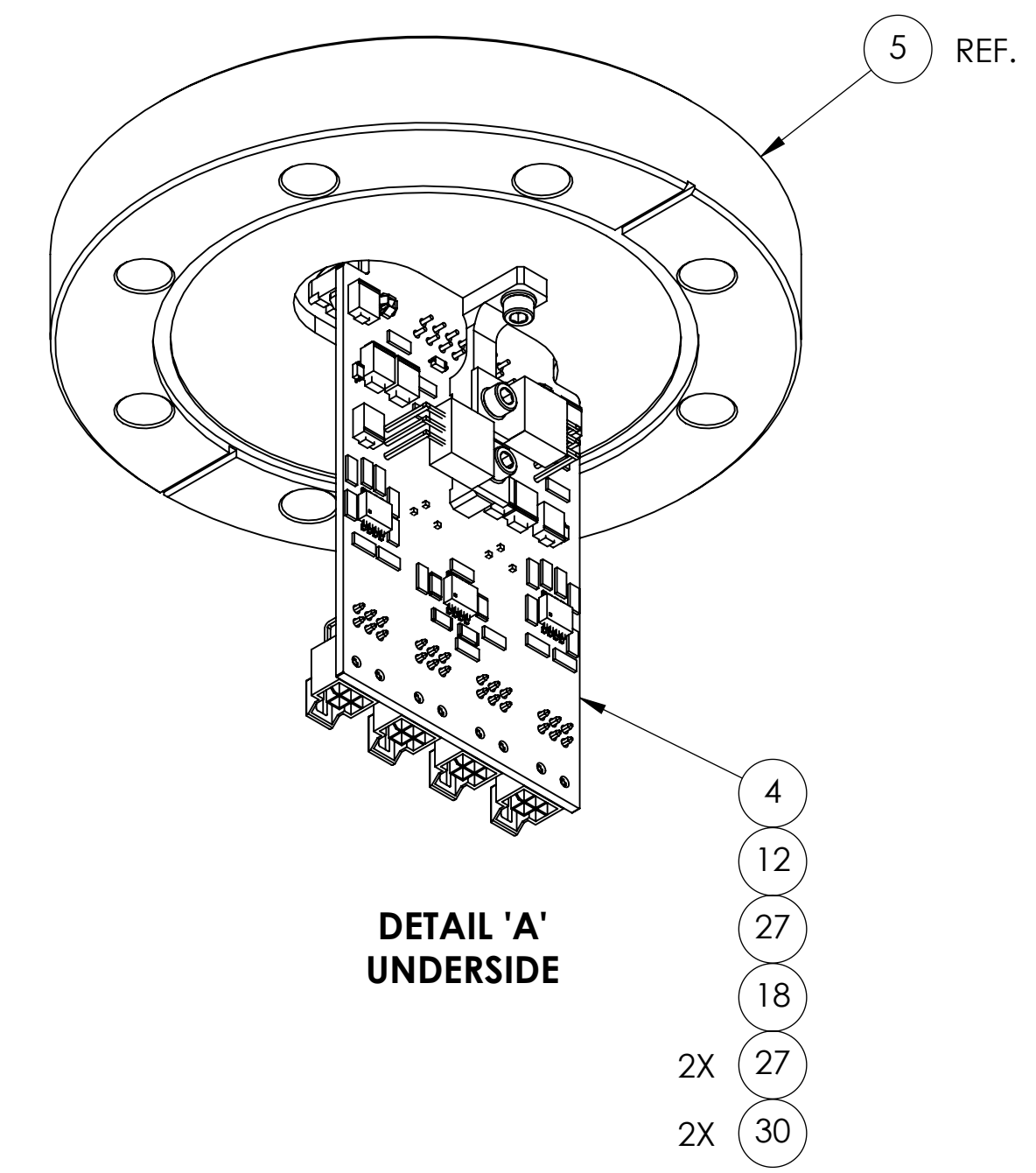
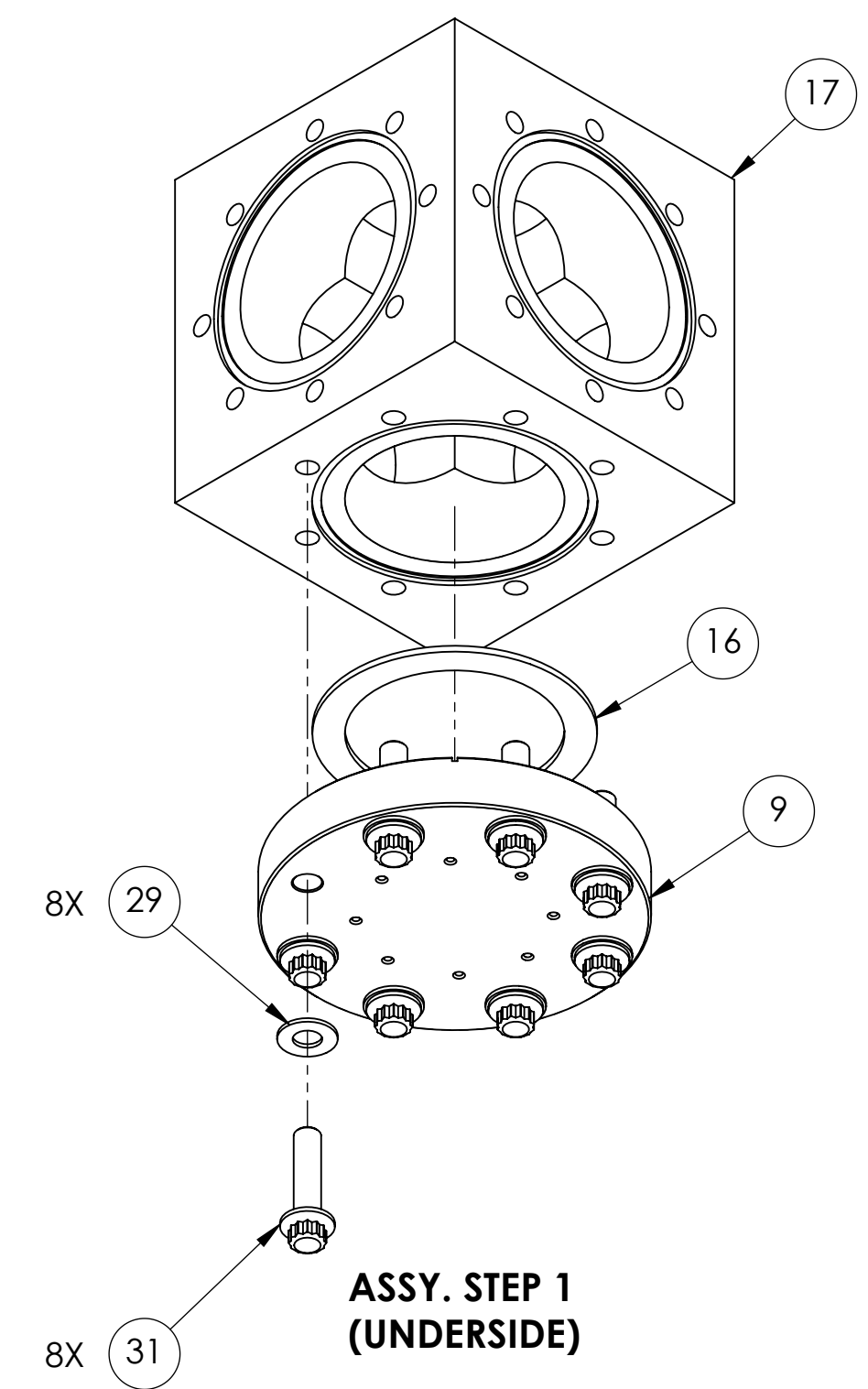


REV.	DATE	DCN #	DRAWING TREE #
v5	09 MAR 2018	E1800034-x0	-
-	-	-	-
-	-	-	-



ITEM NO.	PART NUMBER	DESCRIPTION	MATERIAL	QTY.
33	1185-4EN375 EMHART OR EQ.	HELICOIL, 1/4-20 X .375 LG.	NITRONIC 60	6
32	ED90092-ND DIGI-KEY	Pin Receptacle Connector 0.084" - 0.102"	Brass	4
31	TBD	SCREW, SHC, 5/16-24 X 1.25 LG.	TBD	48
30	MS16995-9 OR EQ.	SCREW, SHC, 4-40 X .25 LG.	18-8 SSSL	18
29	MS15795-812 OR EQ.	WASHER, FLAT, 5/16	300 SSSL	48
28	NAS620-C416 OR EQ.	WASHER, FLAT, 1/4	300 SSSL	4
27	NAS620-C4L OR EQ.	WASHER, FLAT, NO. 4	300 SSSL	27
26	92991A212 McMASTER-CARR OR EQ.	SET SCREW, 6-32 X .38 LG.	Brass	6
25	93785A300 McMASTER-CARR OR EQ.	WASHER, FLAT, NO. 6	PEEK	18
24	T-2012-A UC COMPONENTS OR EQ.	SET SCREW, 1/4-20 X .75 LG., Ag PLATED (VENTED)	Ag-PLATED 300 SSSL	4
23	T-608-A UC COMPONENTS OR EQ.	SET SCREW, 6-32 X .50 Lg. [VENTED, Ag PLATED]	Ag-PLATED 300 SSSL	12
22	C-2012 UC COMPONENTS OR EQ.	SHCS, 1/4-20 X .75, VENTED, UC COMPONENTS		4
21	C-606-N UC COMPONENTS OR EQ.	SCREW, SHC, 6-32 X .38 LG.	300 SSSL	6
20	C-606-A UC COMPONENTS OR EQ.	SCREW, SHC, 6-32 X .38 Lg. [Ag plated, VENTED]	Ag-PLATED 300 SSSL	12
19	C-404-NA UC COMPONENTS OR EQ.	SCREW, SHC, #4-40 X .25 LG., Ag PLATED	Ag-PLATED 300 SSSL	16
18	C-404-A UC COMPONENTS OR EQ.	#4-40 X 0.250", VENTED, SILVER PLATED	Ag-PLATED 300 SSSL	17
17	408003 MDC VAC.	CUBE, 6 WAY, 4.50" OD, CF, 5/16-24 THREADS	304 SSSL	1
16	200810 ACCU-GLASS INC.	GASKET, 4.50" CF FLANGE, KIT (QTY. 10)	COPPER	6
15	111170 ACCU-GLASS INC.	CERAMIC STANDOFF, .50 LG.	CERAMIC	6
14	D1800059	ELECTRIC FIELD METER ASSY, CALIBRATION PLATE	6061-16 AI	2
13	D1800058	ELECTRIC FIELD METER ASSY, SENSING BOARD INTERFACE PLATE	COPPER	4
12	D1800057	ELECTRIC FIELD METER ASSY, POWER/DRIVER BOARD MT BRACKET	6061-16 AI	1
11	D1800056	ELECTRIC FIELD METER ASSY, SENSING BOARD MT BRACKET	6061-16 AI	8
10	D1800055	ELECTRIC FIELD METER ASSY, SUS INTERFACE STANDOFF	6061-16 AI	4
9	D1800054	ELECTRIC FIELD METER ASSY, 4.50 CF FLANGE (BOTTOM)	MAKE FROM P/N 200122	1
8	D1800053	ELECTRIC FIELD METER ASSY, SUS INTERFACE BLOCK	PEEK	1
7	D1800046	ELECTRIC FIELD METER ASSY, SHIELD	6061-16 AI	4
6	D1800044-01	ELECTRIC FIELD METER ASSY, STANDOFF KIT	PEEK	12
5	D1800043	ELECTRIC FIELD METER ASSY, POWER/DRIVER FEEDTHROUGH	MAKE FROM P/N 100210	1
4	D1800040	ELECTROMETER POWER/DRIVE INTERFACE		1
3	D1800037	ELECTROMETER SENSING BOARD		4
2	D1800034	ELECTRIC FIELD METER ASSY, SENSE PLATE	304 SSSL	4
1	D1800032	ELECTRIC FIELD METER ASSY, HIGH POWER FEEDTHROUGH	N/A	4

NOTES AND TOLERANCES: (UNLESS OTHERWISE SPECIFIED)

DIMENSIONS ARE IN INCHES

MATERIAL: N/A

FINISH: N/A μinch

SCALE: N/A

PROJECTION: 1

DATE: 08 MAR 2018

DESIGNER: E.SANCHEZ

DRAWN: SEE DCC

CHECKER: SEE DCC

APPROVAL: SEE DCC

SIZE: E

SIZE DWG. NO.: D1700365

REV. v5

SHEET 1 OF 1