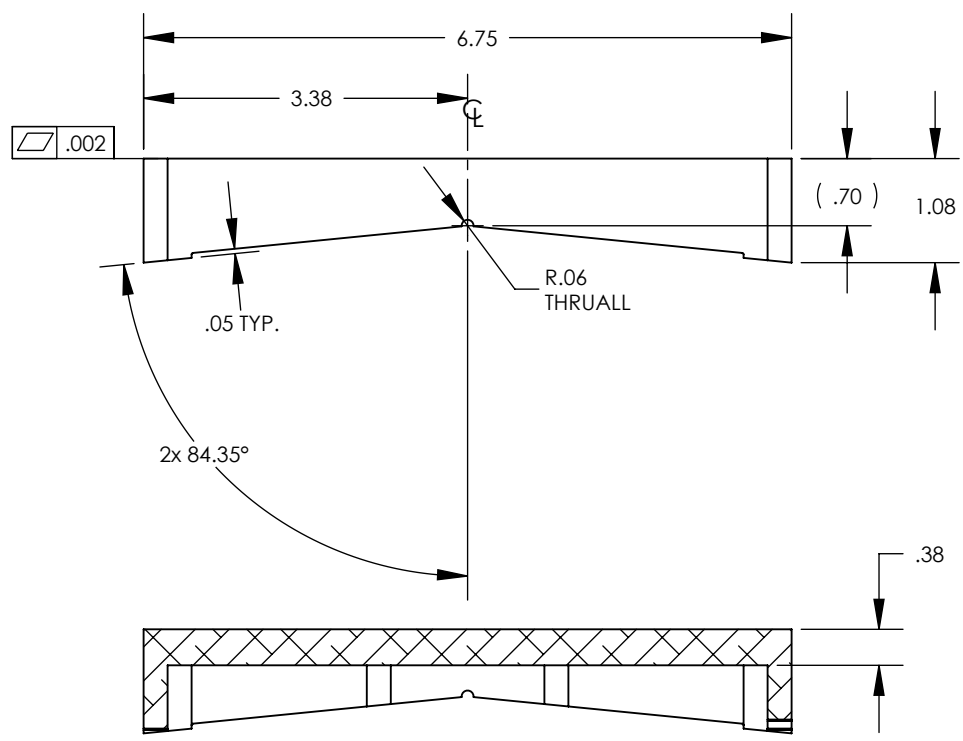
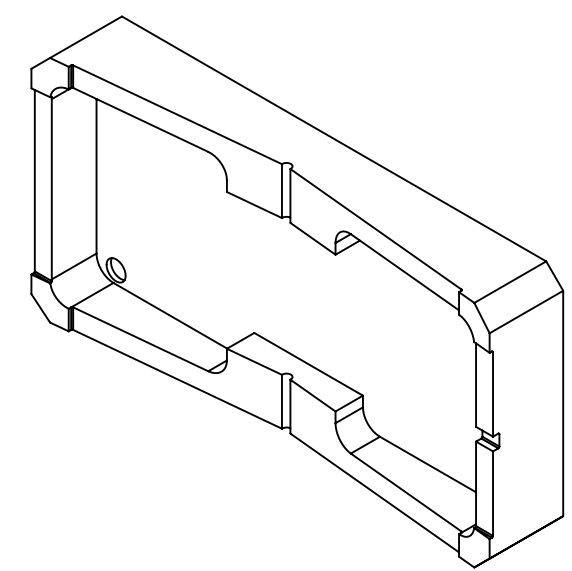


- NOTES CONTINUED:**
- 5. SCRIBE, ENGRAVE (A VIBRATORY TOOL MAY BE USED), LASER MARK OR MECHANICALLY STAMP (NO INKS OR DYES) DRAWING PART NUMBER, REVISION (AND VARIANT OR "TYPE" IF APPLICABLE) ON NOTED SURFACE OF PART FOLLOWED ON THE NEXT LINE WITH A THREE DIGIT SERIAL NUMBER. SERIAL NUMBERS START AT 001 FOR THE FIRST ARTICLE AND PROCEED CONSECUTIVELY. USE MINIMUM 0.12" HIGH CHARACTERS, UNLESS THE SIZE OF THE PART DICTATES SMALLER CHARACTERS. EXAMPLE: DXXXXXX-VY, TYPE-XX, S/N XXX
  - 6. MACHINE ALL SURFACES TO REMOVE OXIDES AND MILL FINISH. USE OF ABRASIVE REMOVAL TECHNIQUES IS NOT ALLOWED. REFER TO LIGO-E0900364
  - 7. ALL PARTS SHALL BE MANUFACTURED IN ACCORDANCE WITH LIGO SPECIFICATION E0900364.
  - 8. ALL MATERIAL IS TO BE VIRGIN MATERIAL (i.e. NO WELD REPAIRS, PLUGS OR RECYCLED MATERIAL), NO REPAIRS SHALL BE MADE UNLESS APPROVED IN ADVANCE, AND IN WRITING, BY LIGO LABORATORY. REFER TO LIGO-E0900364.
  - 9. UNLESS OTHERWISE SPECIFIED, MACHINE FILLET RADII .016 MAX.

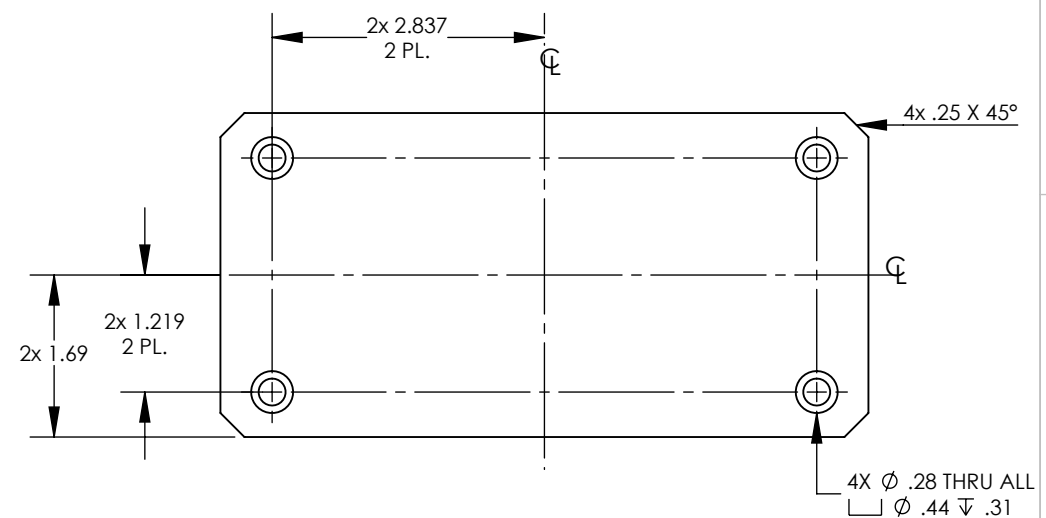
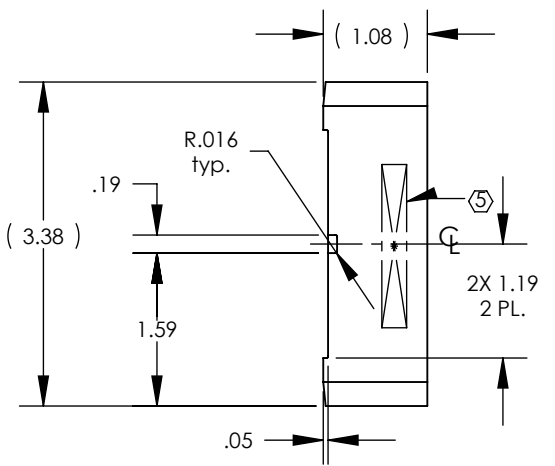
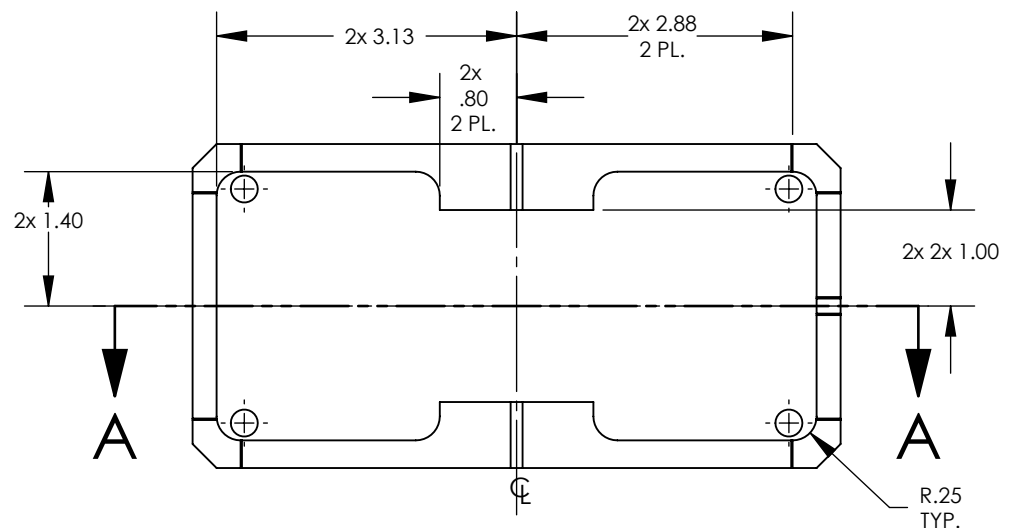
REV.	DATE	DCN #	DRAWING TREE #
v1	21 FEB 2017	-	-
v2	16 MAR 2017	E1700061-x0	-
v3	24 APR 2017	E1700152-x0	-



**SECTION A-A**



**ISO VIEW**



**NOTES AND TOLERANCES: (UNLESS OTHERWISE SPECIFIED)**

DIMENSIONS ARE IN INCHES

TOLERANCES:  
 .XX ± .01  
 .XXX ± .005  
 ANGULAR ± 0.5°

MATERIAL	6061-T6 Al	FINISH	63 μinch
----------	------------	--------	----------

<b>LIGO</b> CALIFORNIA INSTITUTE OF TECHNOLOGY MASSACHUSETTS INSTITUTE OF TECHNOLOGY		<b>PART NAME</b> aLIGO, PSL, PreMode Cleaner, INPUT/OUTPUT END COVER	
<b>SYSTEM</b> ADVANCED LIGO	<b>SUB-SYSTEM</b> PSL	<b>DESIGNER</b> E.SANCHEZ	<b>DATE</b> 31 JAN 2017
<b>DRAFTER</b> E.SANCHEZ	<b>CHECKER</b> SEE DCC	<b>DATE</b> 21 FEB 2017	<b>DATE</b> 21 FEB 2017
<b>APPROVAL</b> SEE DCC	<b>APPROVAL</b> SEE DCC	<b>SIZE</b> B	<b>DWG. NO.</b> D1700031
<b>REVISION</b> v3	<b>SCALE</b> 1:2	<b>PROJECTION</b> 	<b>SHEET</b> 1 OF 1

D1700031 aLIGO, PSL, PreMode Cleaner, INPUT/OUTPUT END COVER, PART PDM REV: X-003, DRAWING PDM REV: X-007