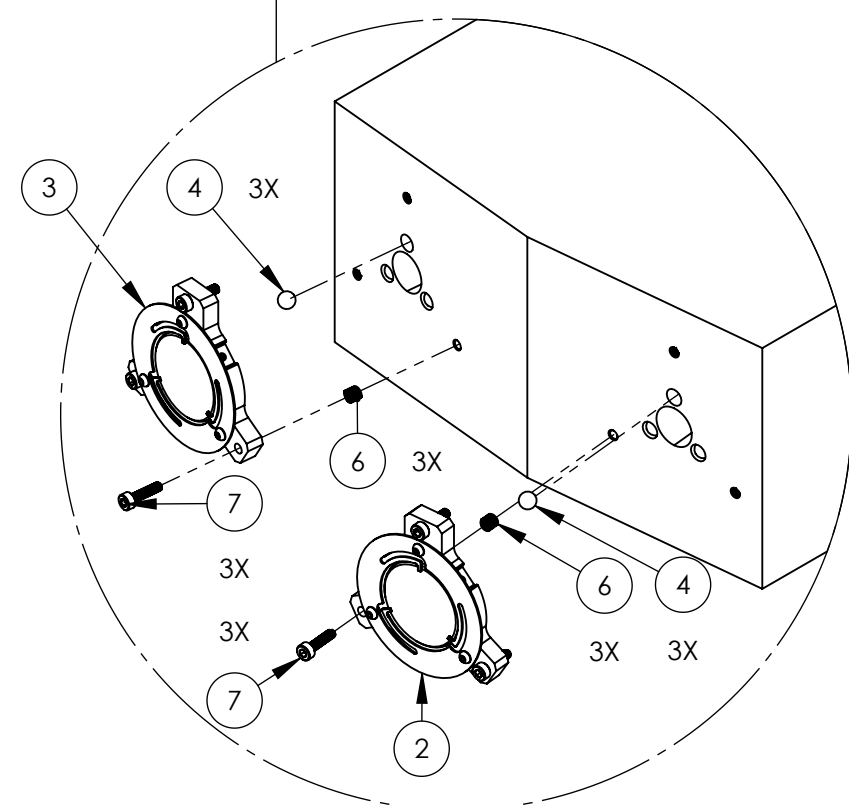
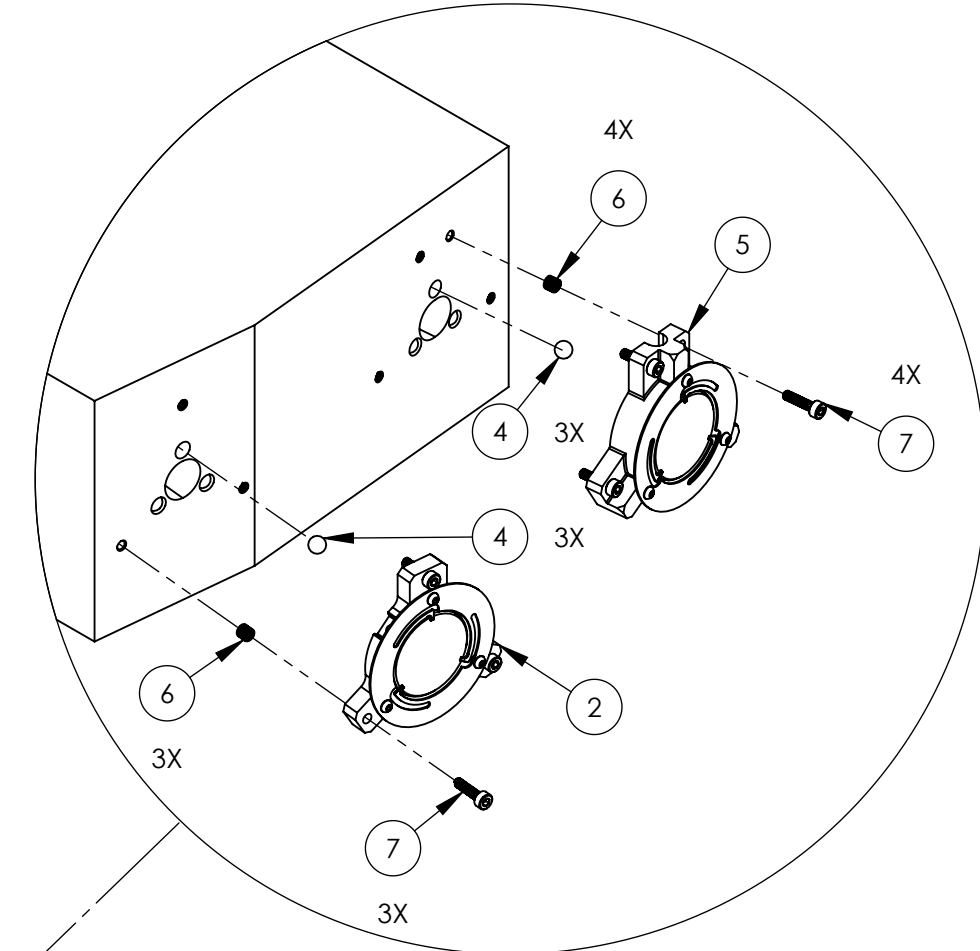
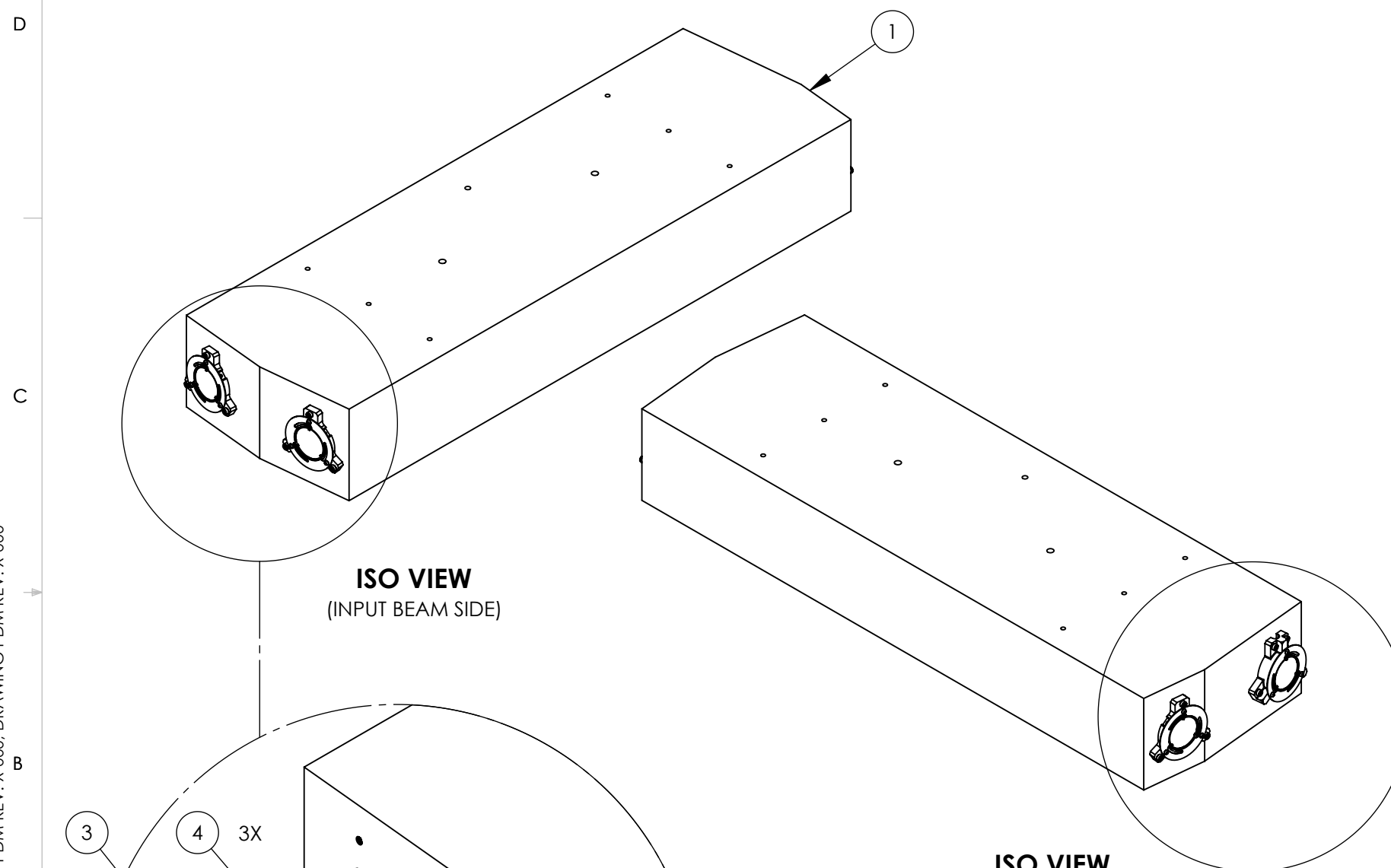


D1600270 aLIGO, PSL, PreMode Cleaner, SPACER ASSY., PART PDM REV: X-000, DRAWING PDM REV: X-000

REV.	DATE	DCN #	DRAWING TREE #
v1	15 SEP 2016	E1600209-x0	-
-	-	-	-
-	-	-	-



ITEM NO.	PART NUMBER	DESCRIPTION	MATERIAL	QTY.
7	MC-2.510 UC COMPONENTS OR EQ.	SCREW, SHC, M2.5 X 0.45 X 10mm LG.	304, 316 OR 302 SSSL	13
6	93914A026 McMASTER-CARR OR EQ.	HELICOIL, M2.5 X .45mm X 3.8mm Lg. (N60)	Anti-Seizing Nitronic	13
5	D1600269	aLIGO, PSL, PreMode Cleaner, PZT/Mirror MT. Assembly	N/A	1
4	9642K35 McMASTER-CARR	HARDENED TIGHT-TOLERANCE BALL, 3/16" DIA.	AISI 440C	12
3	D1600244	aLIGO, PSL, PreMode Cleaner, 1" Mirror Assembly (Curved)	N/A	1
2	D1600243	aLIGO, PSL, PreMode Cleaner, 1" Mirror Assembly	N/A	2
1	D1600227	aLIGO, PSL, PREMODE CLEANER, BODY	6061 Alloy	1

NOTES AND TOLERANCES: (UNLESS OTHERWISE SPECIFIED)

MATERIAL		FINISH		NEXT ASSY		PART NAME		REV.			
N/A		N/A μinch		D1600297		aLIGO, PSL, PreMode Cleaner, SPACER ASSY.		v1			
CALIFORNIA INSTITUTE OF TECHNOLOGY MASSACHUSETTS INSTITUTE OF TECHNOLOGY				ADVANCED LIGO PSL		DESIGNER: E.SANCHEZ DRAFTER: E.SANCHEZ CHECKER: SEE DCC APPROVAL: SEE DCC		DATE: 15 SEP 2016 DATE: 15 SEP 2016 SEE DCC SEE DCC		SIZE DWG. NO. B D1600270	
				SCALE: 1:4		PROJECTION:		SHEET 1 OF 1			