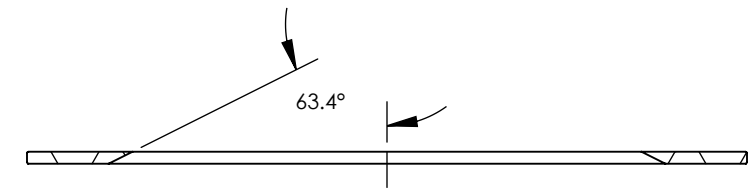


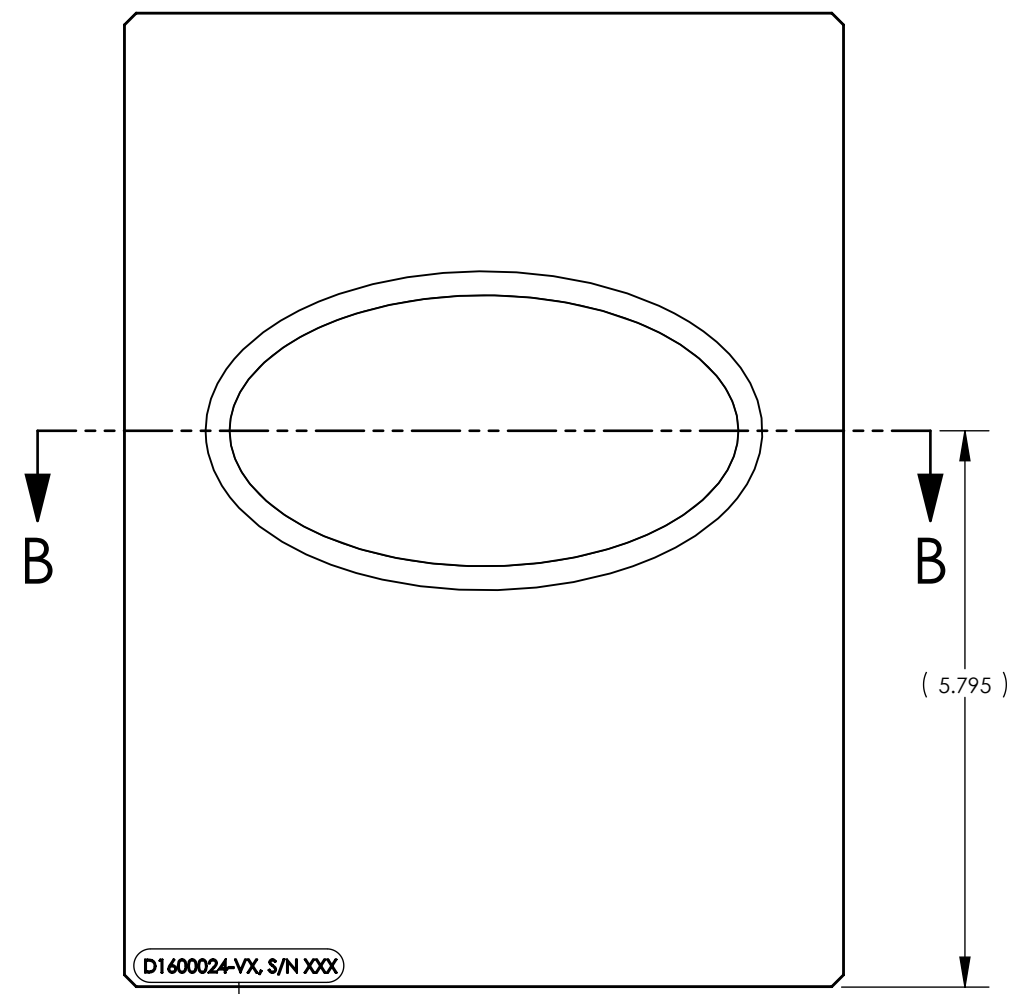
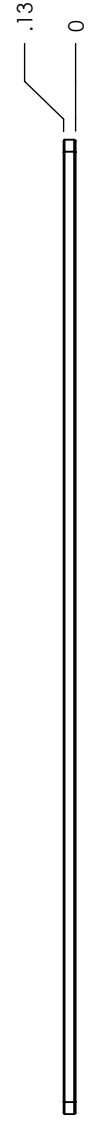
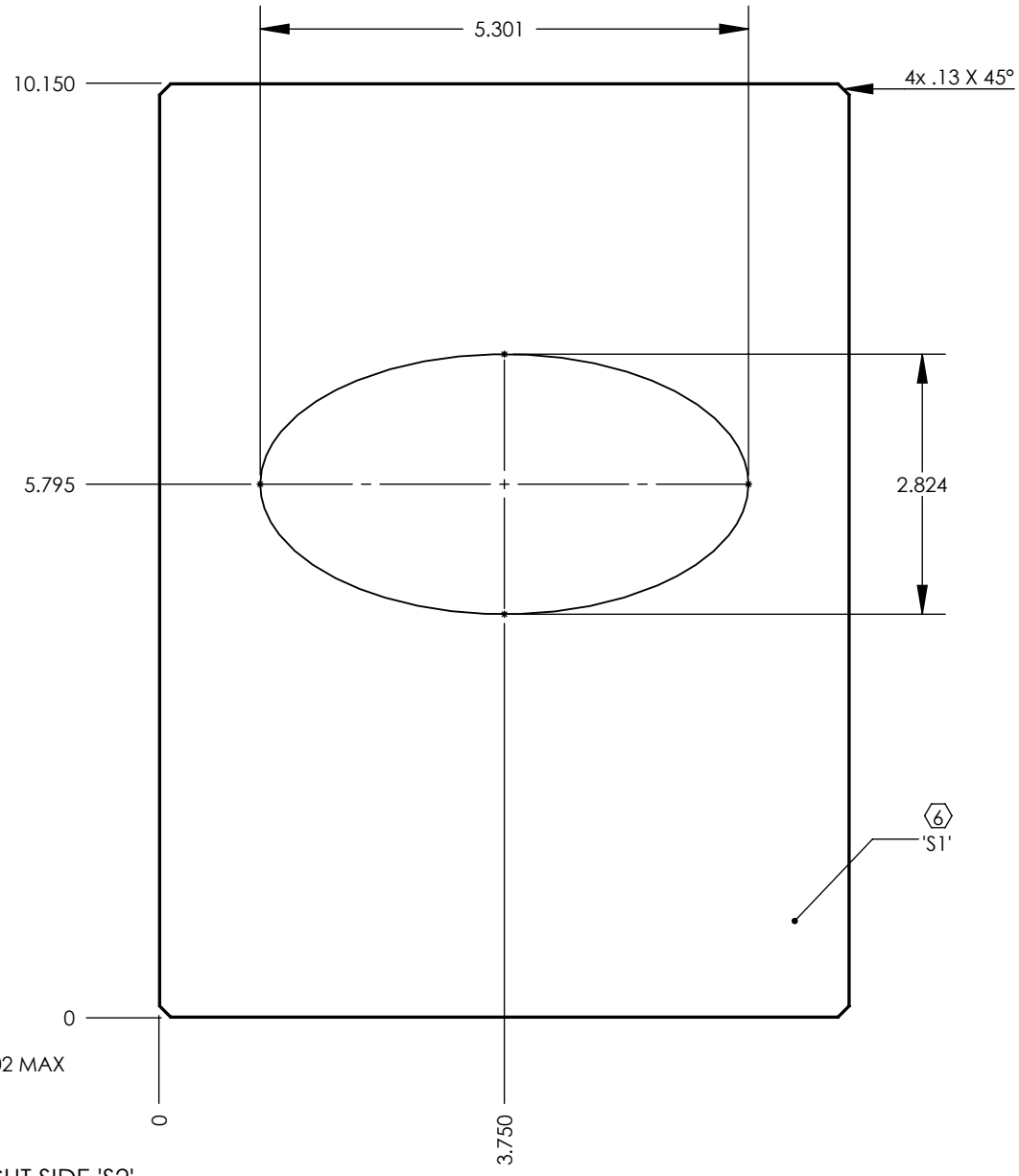
D1600026 qLIGO, AOS, SR2 AR HARTMANN BAFFLE, HWSY CENTER PANEL, PART PDM REV: X-001, DRAWING PDM REV: X-003

NOTES CONTINUED:
 ⑤ SCRIBE, ENGRAVE, LASER MARK OR MECHANICALLY STAMP (NO DYES OR INKS) A UNIQUE THREE DIGIT SERIAL NUMBER & REVISION NUMBER ON EACH PART. SERIAL NUMBERS START AT 001 FOR THE FIRST ARTICLE AND PROCEED CONSECUTIVELY. BAG AND TAG PARTS WITH THEIR DRAWING PART NUMBER, REVISION, VARIANT OR "TYPE" (IF APPLICABLE), AND QUANTITY. IF PARTS ARE TOO SMALL TO SCRIBE, BAGGING AND TAGGING ALONE IS SUFFICIENT.
 EXAMPLE (PART): 001-v1
 EXAMPLE (TAG): DXXXXXX-VY, TYPE-XX, QTY: TBD

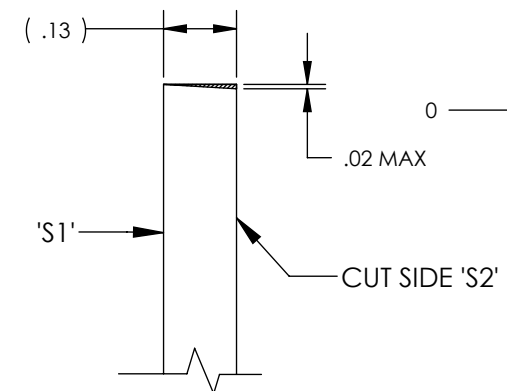
REV.	DATE	DCN #	DRAWING TREE #
v1	21 JAN 2016	E1600024-x0	-
-	-	-	-
-	-	-	-



SECTION B-B



DETAIL A
SCALE 1:1



DETAIL 'A'
(KERF TAPER ANGLE)

NOTES AND TOLERANCES: (UNLESS OTHERWISE SPECIFIED)	
DIMENSIONS ARE IN INCHES	
1. INTERPRET DRAWING PER ASME Y14.5-1994.	
2. REMOVE ALL SHARP EDGES, .005-.015, FOR MACHINED PARTS.	
3. DO NOT SCALE FROM DRAWING.	
4. ALL MACHINING FLUIDS MUST BE FULLY SYNTHETIC, FULLY WATER SOLUBLE AND FREE OF SULFUR, SILICONE, AND CHLORINE.	
TOLERANCES:	
.XX ± .02	
.XXX ± .015	
ANGULAR ± 1.0°	
MATERIAL	FINISH
WELDING GLASS, SHADE #14	N/A μinch

CALIFORNIA INSTITUTE OF TECHNOLOGY MASSACHUSETTS INSTITUTE OF TECHNOLOGY	PART NAME		qLIGO, AOS, SR2 AR HARTMANN BAFFLE, HWSY CENTER PANEL			
	SYSTEM ADVANCED LIGO	SUB-SYSTEM AOS	DESIGNER E.SANCHEZ	DATE 14 JAN 2016	SIZE DWG. NO. B D1600026	REV. v1
DRAFTER E.SANCHEZ	DATE 21 JAN 2016	CHECKER SEE DCC	SEE DCC	SCALE: 1:2	PROJECTION:	SHEET 1 OF 1
NEXT ASSY D1600009	APPROVAL SEE DCC	SEE DCC	SEE DCC			