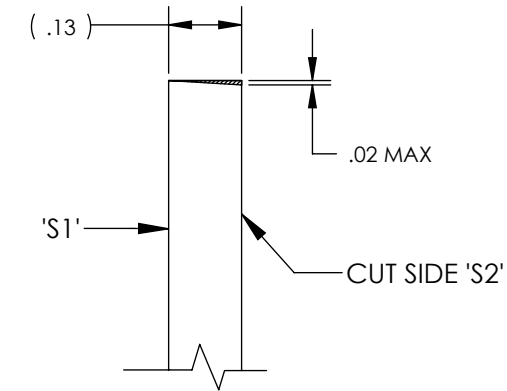


D1600025 qLIGO, AOS, SR2 AR HARTMANN BAFFLE, HWSY SIDE PANEL, PART PDM REV: X-001, DRAWING PDM REV: X-005

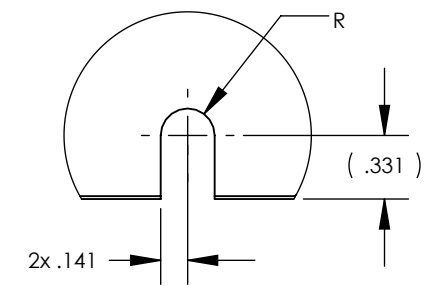
**NOTES CONTINUED:**  
 ⑤ SCRIBE, ENGRAVE (A VIBRATORY TOOL MAY BE USED), LASER MARK OR MECHANICALLY STAMP (NO INKS OR DYES) DRAWING PART NUMBER, REVISION (AND VARIANT OR "TYPE" IF APPLICABLE) ON NOTED SURFACE OF PART FOLLOWED ON THE NEXT LINE WITH A THREE DIGIT SERIAL NUMBER. SERIAL NUMBERS START AT 001 FOR THE FIRST ARTICLE AND PROCEED CONSECUTIVELY. USE MINIMUM 0.12" HIGH CHARACTERS, UNLESS THE SIZE OF THE PART DICTATES SMALLER CHARACTERS. EXAMPLE: DXXXXXX-VY, TYPE-XX, S/N XXX

⑥ CUT AWAY FROM SIDE 1 AS PER DETAIL 'A'

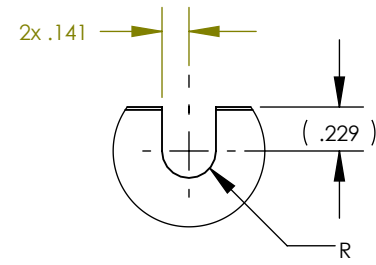
REV.	DATE	DCN #	DRAWING TREE #
v1	21 JAN 2016	E1600024-x0	-
-	-	-	-
-	-	-	-



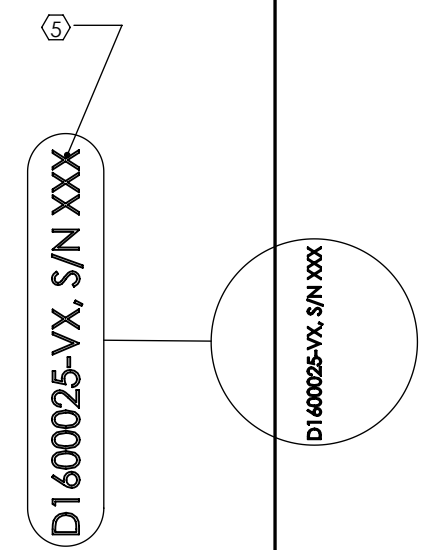
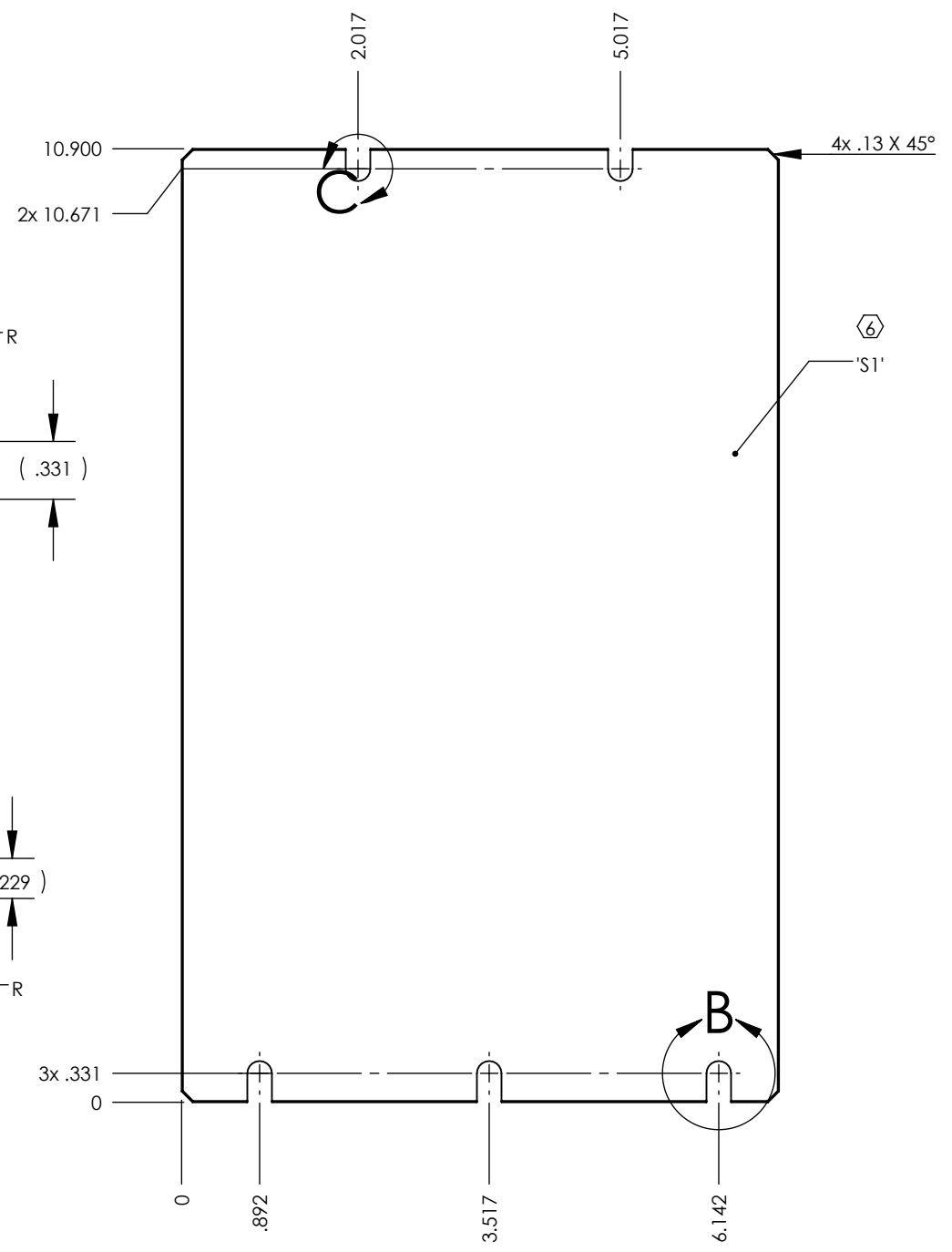
**DETAIL 'A'**  
(KERF TAPER ANGLE)



**DETAIL B**  
SCALE 1 : 1  
3 PL.



**DETAIL C**  
SCALE 1 : 1  
2 PL.



**DETAIL D**  
SCALE 1 : 1

NOTES AND TOLERANCES: (UNLESS OTHERWISE SPECIFIED)		
DIMENSIONS ARE IN INCHES		
TOLERANCES: .XX ± .02 .XXX ± .015		
ANGULAR ± 1.0°		
1. INTERPRET DRAWING PER ASME Y14.5-1994. 2. REMOVE ALL SHARP EDGES, .005-.015, FOR MACHINED PARTS. 3. DO NOT SCALE FROM DRAWING. 4. ALL MACHINING FLUIDS MUST BE FULLY SYNTHETIC, FULLY WATER SOLUBLE AND FREE OF SULFUR, SILICONE, AND CHLORINE.		
MATERIAL	FINISH	NEXT ASSY
WELDING GLASS, SHADE #14	N/A μinch	D1600009

LIGO		CALIFORNIA INSTITUTE OF TECHNOLOGY MASSACHUSETTS INSTITUTE OF TECHNOLOGY		PART NAME	
ADVANCED LIGO		AOS		qLIGO, AOS, SR2 AR HARTMANN BAFFLE, HWSY SIDE PANEL	
DESIGNER	ESANCHEZ	14 JAN 2016	SIZE	DWG. NO.	
DRAFTER	ESANCHEZ	21 JAN 2016	B	D1600025	
CHECKER	SEE DCC	SEE DCC	SCALE	1:2	
APPROVAL	SEE DCC	SEE DCC	PROJECTION:	SHEET 1 OF 1	
REV.					v1