

Last Edited: 1/7/2016

Title
Triplexer Overview

LIGO Laboratory
California Institute of Technology
Massachusetts Institute of Technology



Size: A

DCC Number: D1600001

Revision: V1

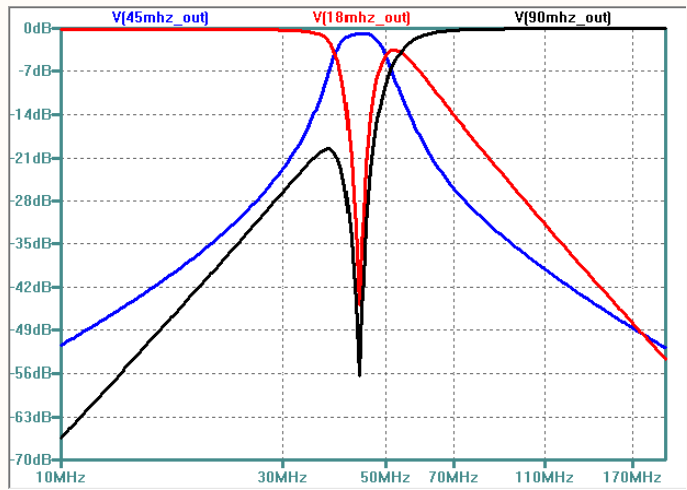
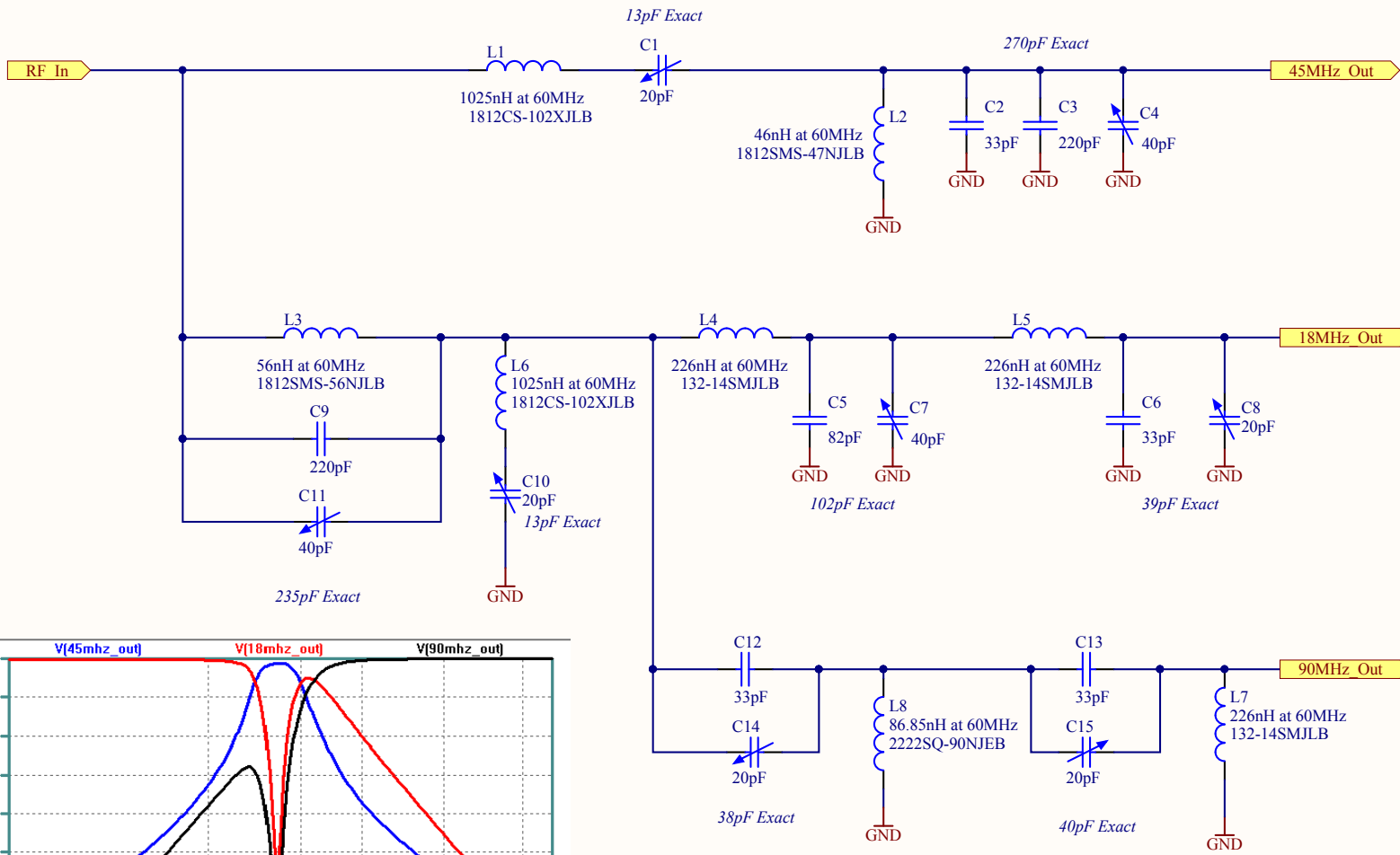
Engineer: R. Abbott

Date: 1/7/2016

Time: 4:46:39 PM

File: C:\Rich's Files\Mycadfiles\ISC\WFS_Triplexer\WFS_TriplexerTop.SchDoc

Sheet 1 of 1



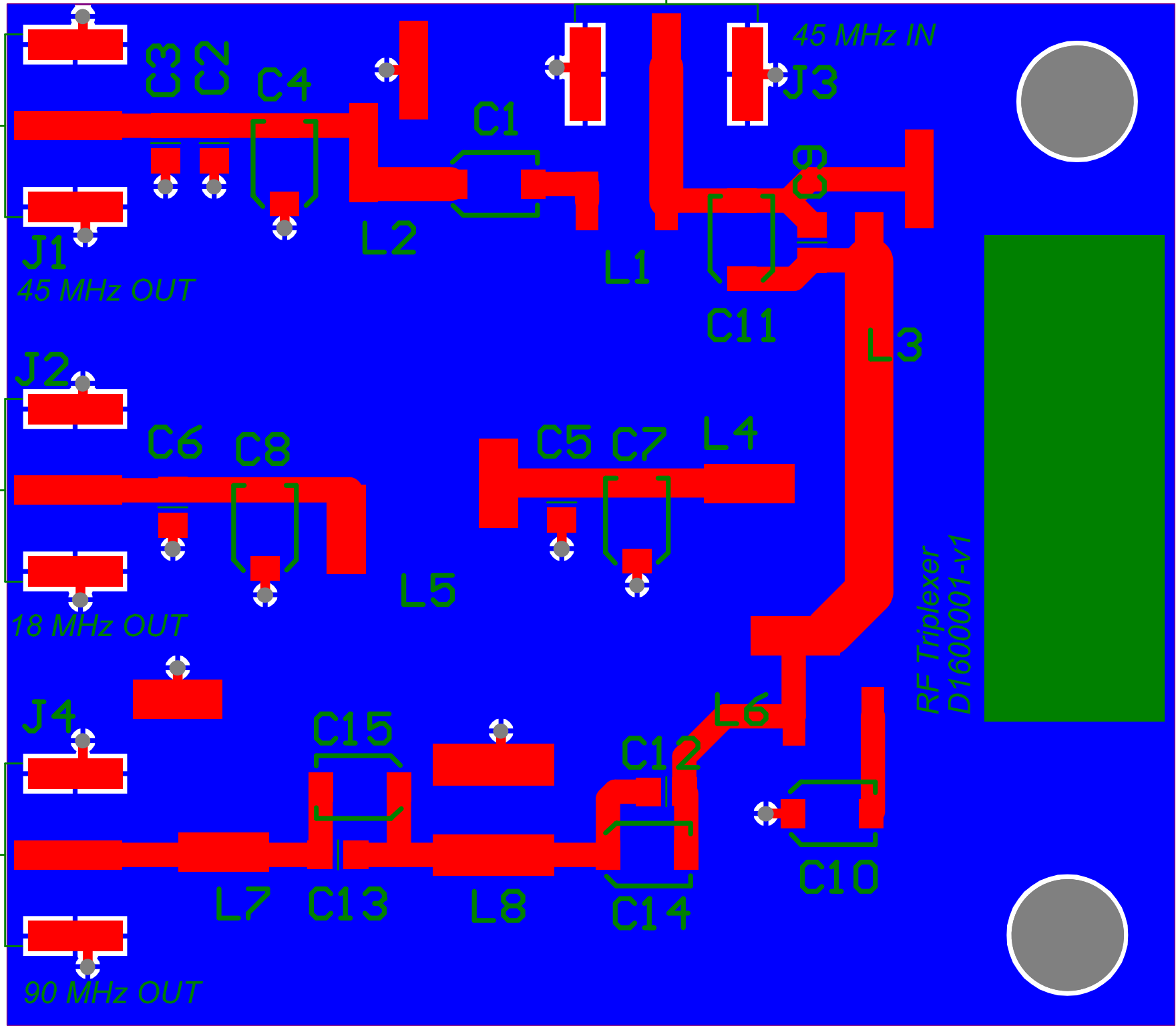
Title **WFS RF Triplexer Channel Detail**

LIGO Laboratory
California Institute of Technology
Massachusetts Institute of Technology



Last Edited: 1/7/2016

Size: A	DCC Number: D1600001	Revision: V1	Engineer: R. Abbott	Date: 1/7/2016
				Time: 4:46:39 PM
				Sheet 1 of 2



LIGO Bill of Materials

Source Data From: WFS_Triplexer_v1.PrxPCB
Board Designed By: R. Abbott
Board D-number: D1600001
Board Revision: V1
Variant: None

Creation Date: 1/7/2016 4:46:41 PM
Print Date: 07-Jan-16 4:46:43 PM

Designator	Comment	Description	Digikey Part Number	Manufacturers Part Number	Quantity
C1, C8, C10, C14, C15	Voltronics	Variable or Adjustable Capacitor		JZ200	5
C2, C6, C12, C13	33pF		1284-1050-1-ND	600F330JT250XT	4
C3, C9	220pF		1284-1038-1-ND	600F221JT250XT	2
C4, C7, C11	Voltronics	Variable or Adjustable Capacitor		JZ400	3
C5	82pF		1284-1077-1-ND	600F820JT250XT	1
J1, J2, J4	SMA Plug, Male Pin	SMA Connector	ACX1915-ND	Amphenol 132365-10	3
J3	SMA Jack, Female Socket	SMA Connector	ACX1911-ND	Amphenol 132357-11	1
L1, L6	Coilcraft	Inductor		1812CS-102XJLB	2
L2	Coilcraft	Inductor		1812SMS-47NJLB	1
L3	Coilcraft	Inductor		1812SMS-56NJLB	1
L4, L5, L7	Coilcraft	Inductor		132-14SMJLB	3
L8	Coilcraft	Inductor		2222SQ-90NJEB	1
					27