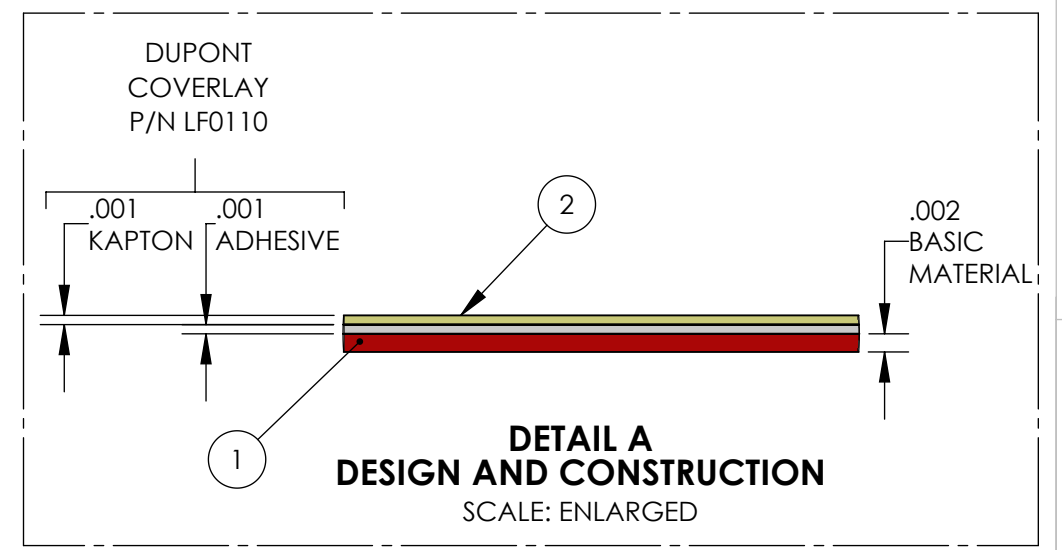
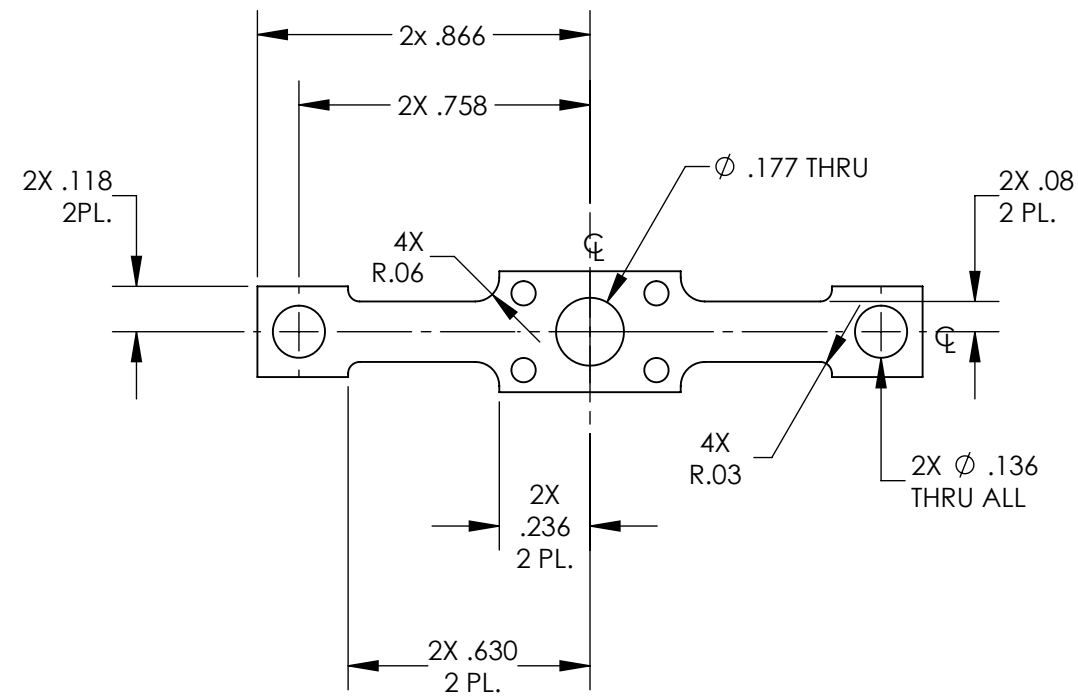


- NOTES CONTINUED:**
- 5. SCRIBE, ENGRAVE, LASER MARK OR MECHANICALLY STAMP (NO DYES OR INKS) A UNIQUE THREE DIGIT SERIAL NUMBER & REVISION NUMBER ON EACH PART. SERIAL NUMBERS START AT 001 FOR THE FIRST ARTICLE AND PROCEED CONSECUTIVELY. BAG AND TAG PARTS WITH THEIR DRAWING PART NUMBER, REVISION, VARIANT OR "TYPE" (IF APPLICABLE), AND QUANTITY. IF PARTS ARE TOO SMALL TO SCRIBE, BAGGING AND TAGGING ALONE IS SUFFICIENT.
EXAMPLE (PART): 001-v1
EXAMPLE (TAG): DXXXXXX-VY, TYPE-XX, QTY: TBD
 - 6. ALL MATERIAL IS TO BE VIRGIN MATERIAL (i.e. NO WELD REPAIRS, PLUGS OR RECYCLED MATERIAL). NO REPAIRS SHALL BE MADE UNLESS APPROVED IN ADVANCE, AND IN WRITING, BY LIGO LABORATORY. REFER TO LIGO-E0900364.
 - 7. SURFACE FINISH TO BE AS-PROCESSED FROM MILL/SUPPLIER, FREE FROM SCRATCHES OR GOUGES.
 - 8. PHOTOCHEMICALLY ETCH (PCM) ITEM NO. 1 AS SHOWN.
 - 9. APPLY LAYER OF ITEM NO. 2 PER MANUFACTURER'S INSTRUCTIONS.

REV.	DATE	DCN #	DRAWING TREE #
v1	06 AUG 2015	E1500330-x0	-
v2	06 JAN 2016	E1600001-x0	-
v3	11 FEB 2016	E1600048-x0	-

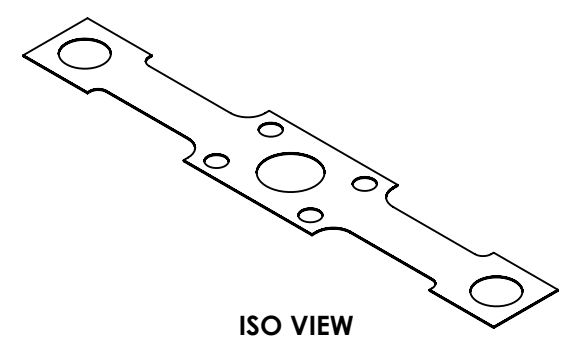
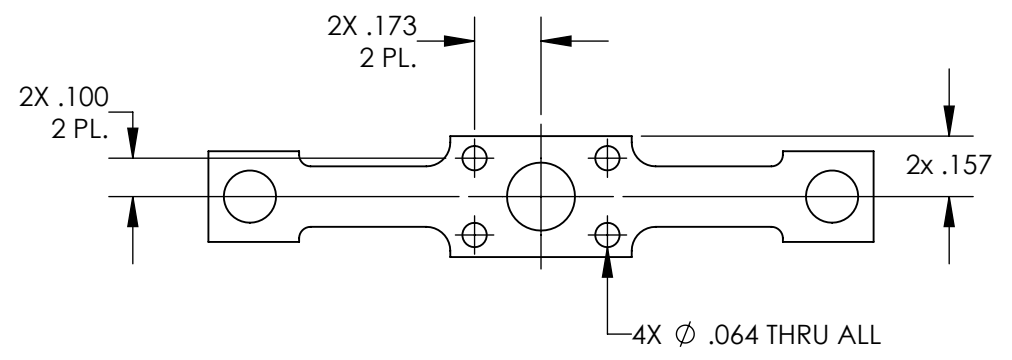
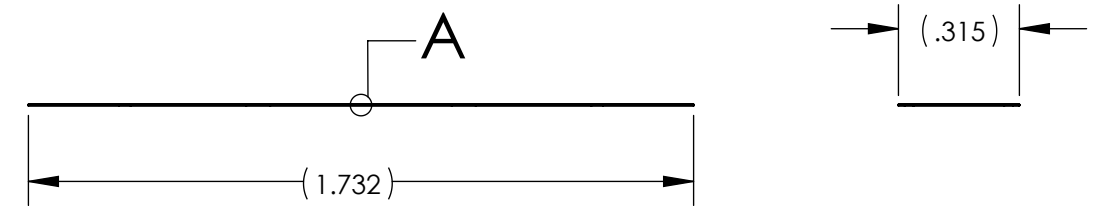


BLADE FABRICATION DETAILS:-

- i) **BASIC MATERIAL: 304 SSTL FOIL, HARD**
- ii) **MATERIAL THICKNESS: .002"**
- iii) **LAYER DETAILS:-**
 LAYER 1: BASIC MATERIAL
 LAYER 2: DUPONT COVERLAY P/N LF0110

IV) DUPONT COVERLAY CONSTRUCTION:-

- MASK_1: KAPTON POLYAMIDE FILM (.001 THICK)
- MASK_2: ADHESIVE (.001 THICK)



ITEM NO.	PART NO.	DESCRIPTION	QTY.
1	-	304 SSTL foil, .002 Thick, HARD	A/R
2	DUPONT LF0110	DUPONT PYRALUX COVERLAY, .002 Thick	A/R

NOTES AND TOLERANCES: (UNLESS OTHERWISE SPECIFIED)

DIMENSIONS ARE IN INCHES

TOLERANCES:
 .XX ± .01
 .XXX ± .005
 ANGULAR ± 0.5°

MATERIAL: AS NOTED
 FINISH: AS NOTED μinch

LIGO CALIFORNIA INSTITUTE OF TECHNOLOGY
 MASSACHUSETTS INSTITUTE OF TECHNOLOGY

ADVANCED LIGO SUB-SYSTEM SUS

DESIGNER: P.FRITSCHEL
 DRAFTER: E.SANCHEZ
 CHECKER: SEE DCC
 APPROVAL: SEE DCC

PART NAME: QUAD, SUS, Bounce & Roll mode damper, Blade

SIZE DWG. NO. B **D1500220**

REV. v3

SCALE: 2:1 PROJECTION: SHEET 1 OF 1

D1500220 QUAD, SUS, Bounce & Roll mode damper, Cu Blade, PART PDM REV: X-005, DRAWING PDM REV: X-009