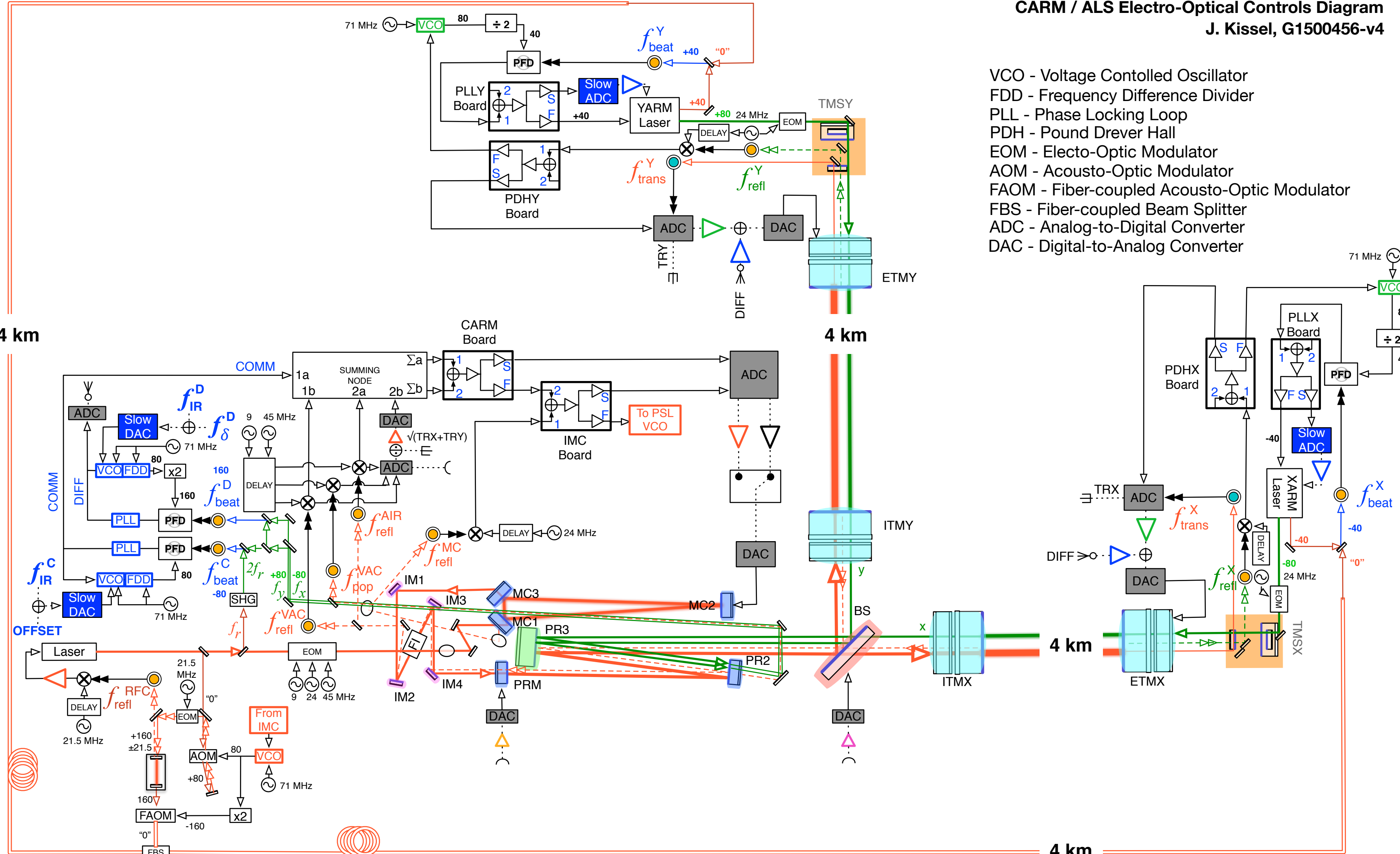


CARM / ALS Electro-Optical Controls Diagram
J. Kissel, G1500456-v4

- VCO - Voltage Controlled Oscillator
- FDD - Frequency Difference Divider
- PLL - Phase Locking Loop
- PDH - Pound Drever Hall
- EOM - Electro-Optic Modulator
- AOM - Acousto-Optic Modulator
- FAOM - Fiber-coupled Acousto-Optic Modulator
- FBS - Fiber-coupled Beam Splitter
- ADC - Analog-to-Digital Converter
- DAC - Digital-to-Analog Converter



4 km