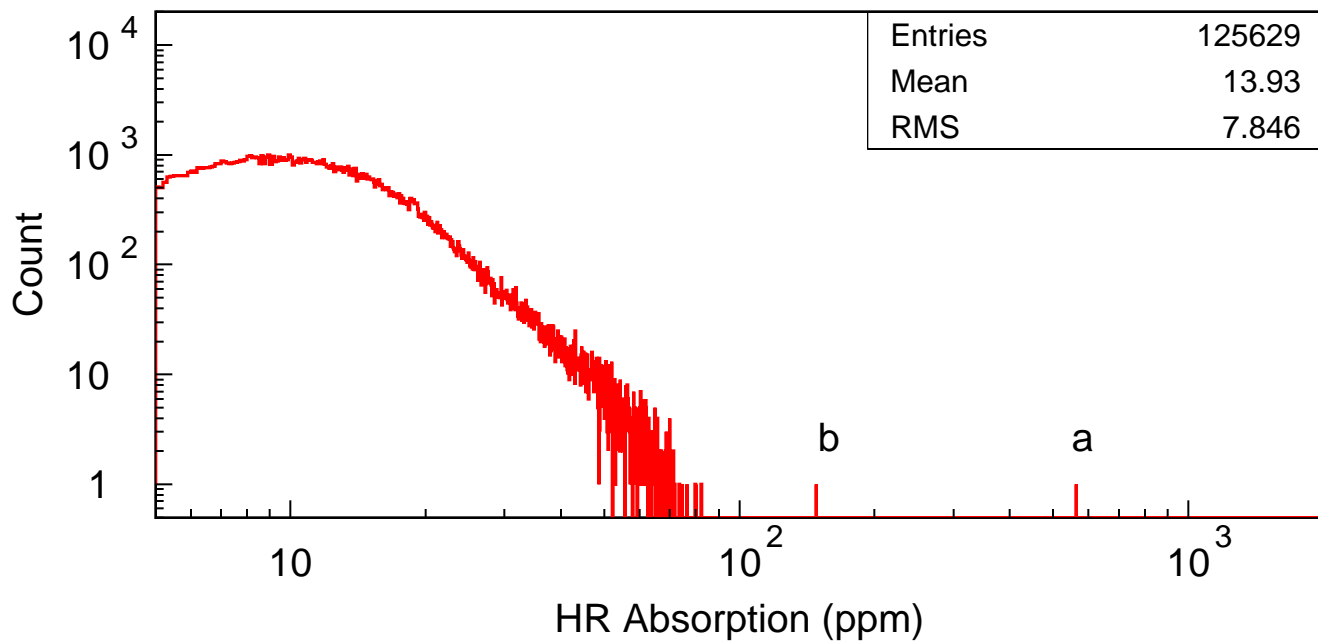
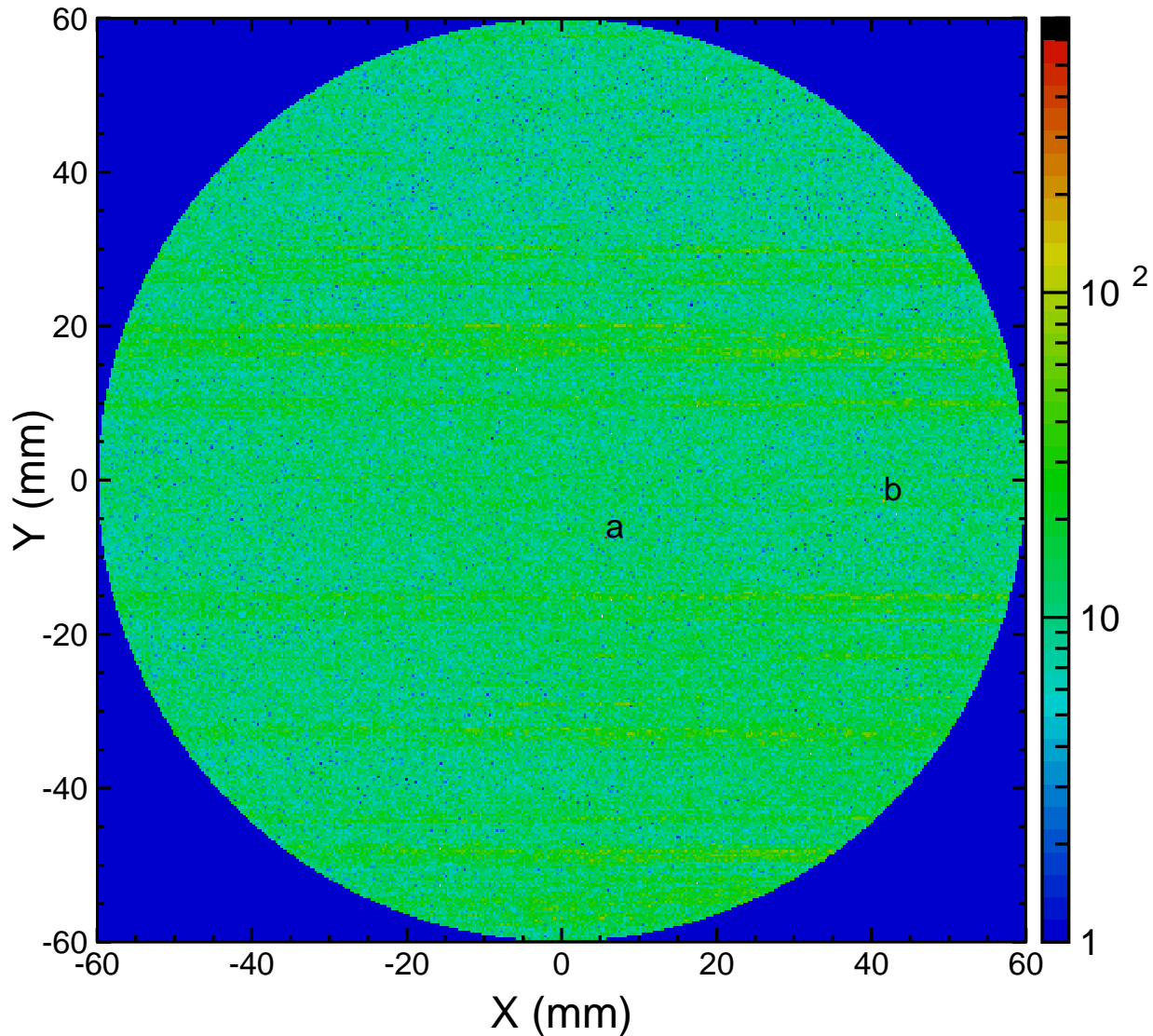
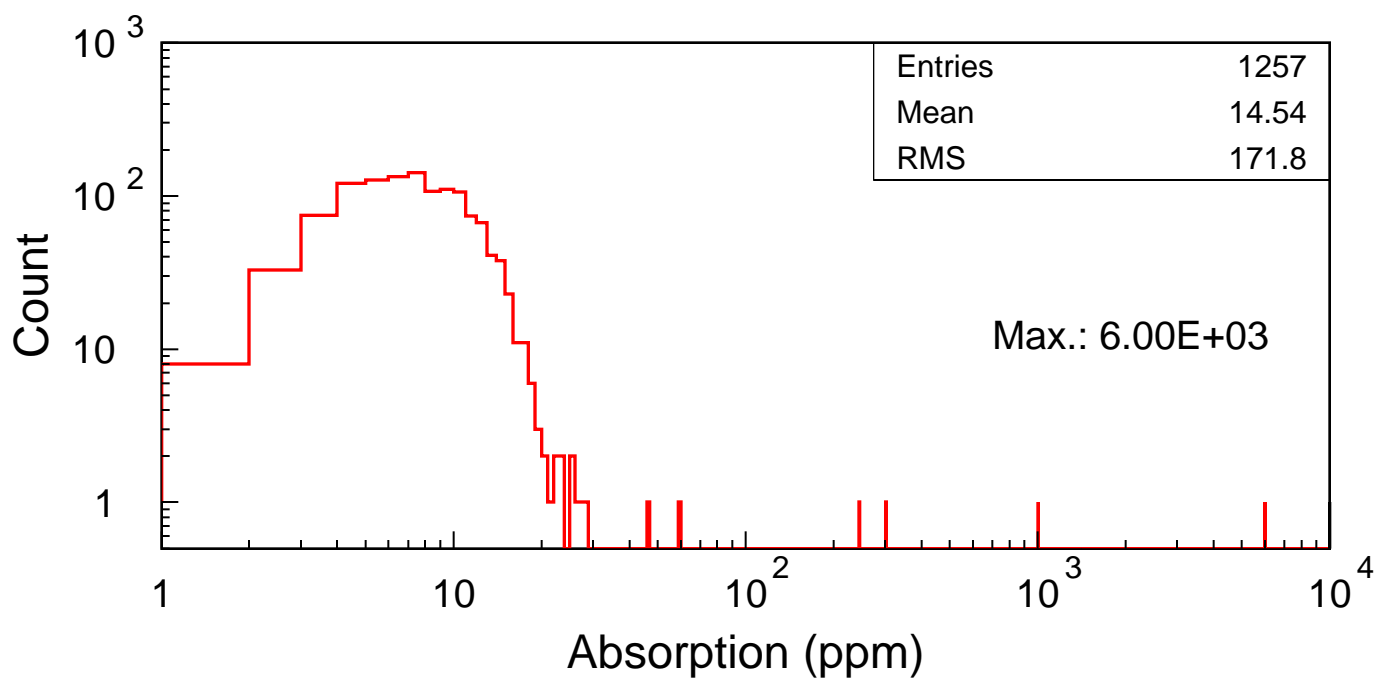
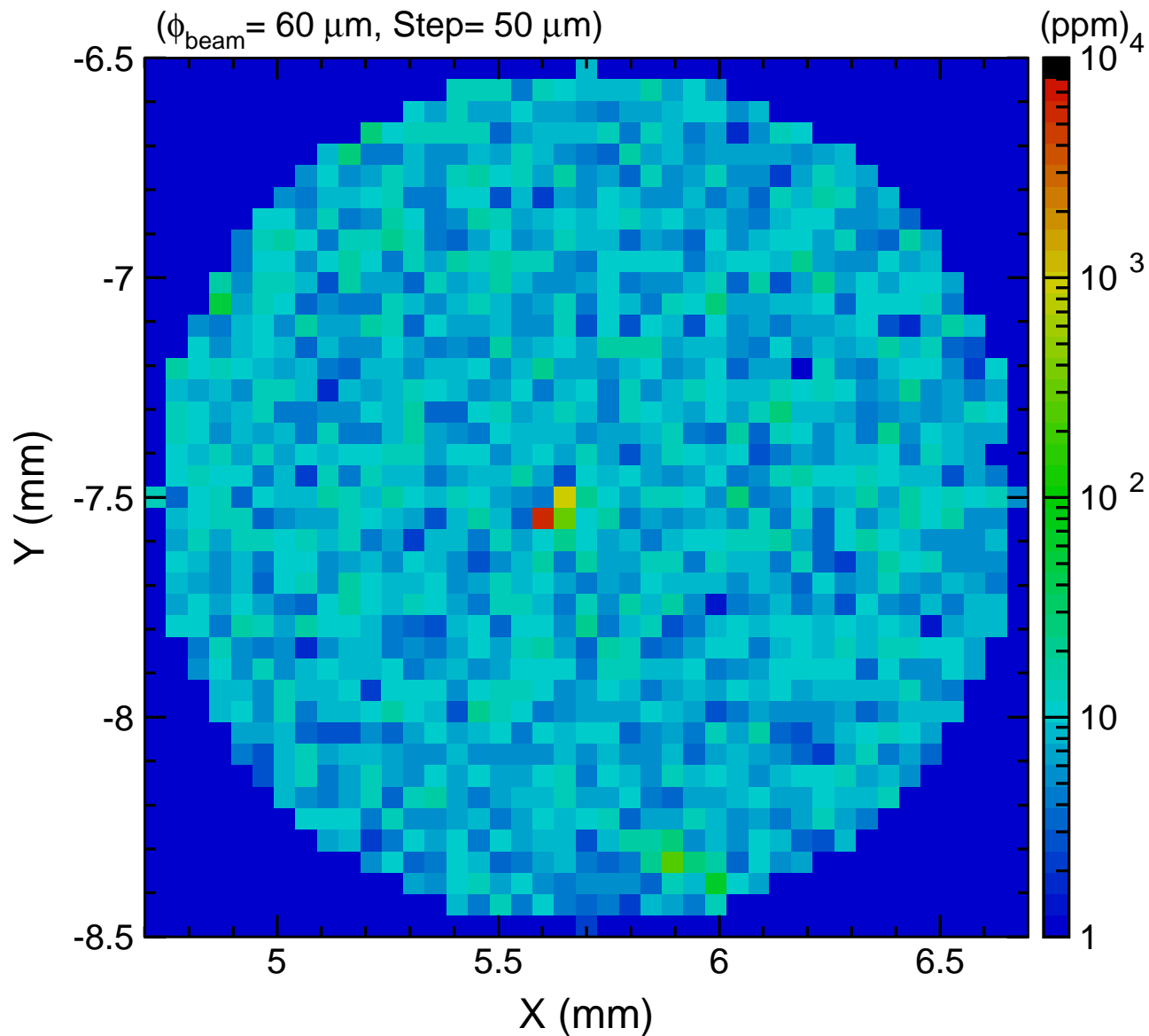


ETM14 HR Absorption ($\phi_{\text{beam}} = 0.3\text{mm}$, Step= 0.3 mm) (ppm)



ETM14, HR point-a absorption

($\phi_{\text{beam}} = 60 \mu\text{m}$, Step= 50 μm)



ETM14, HR point-b absorption

($\phi_{\text{beam}} = 60 \mu\text{m}$, Step= $50 \mu\text{m}$)

