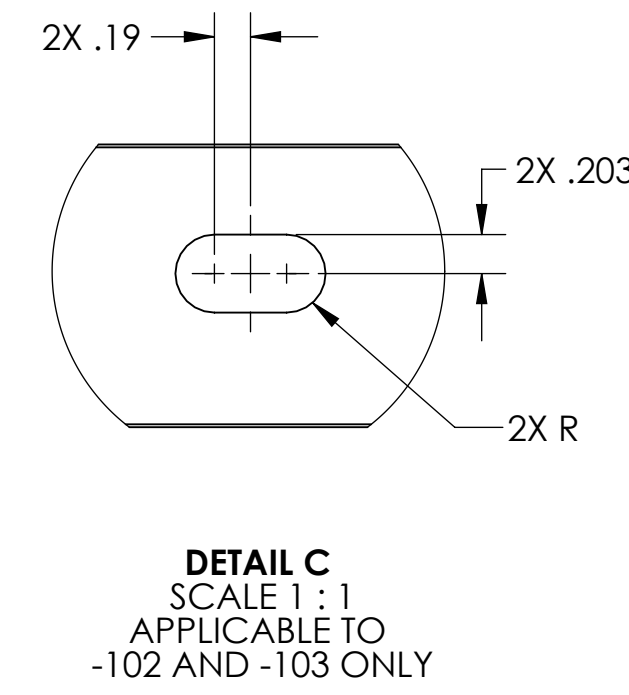
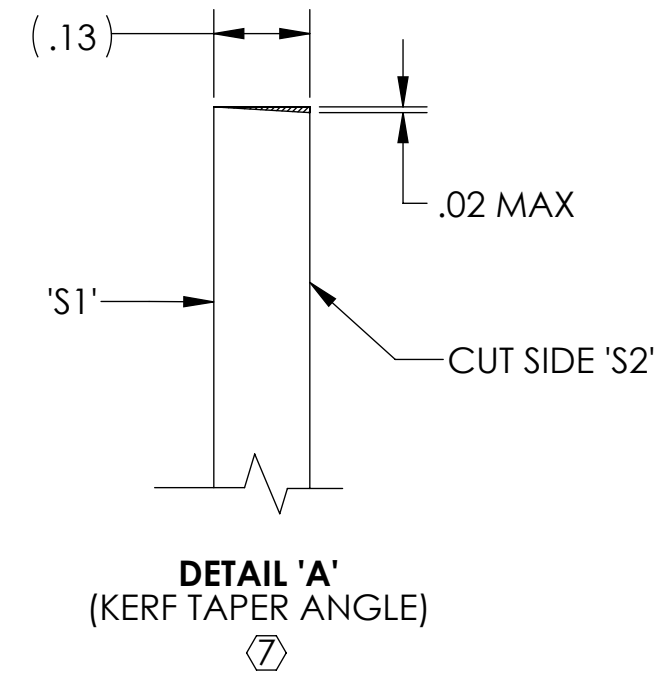
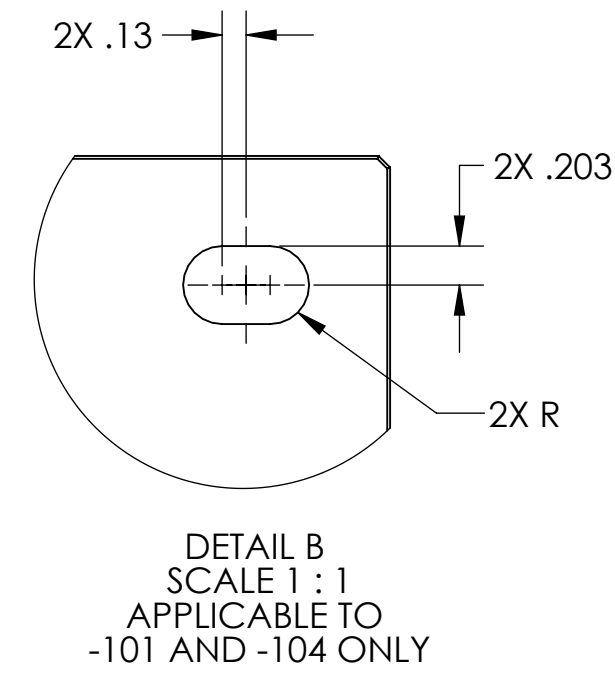


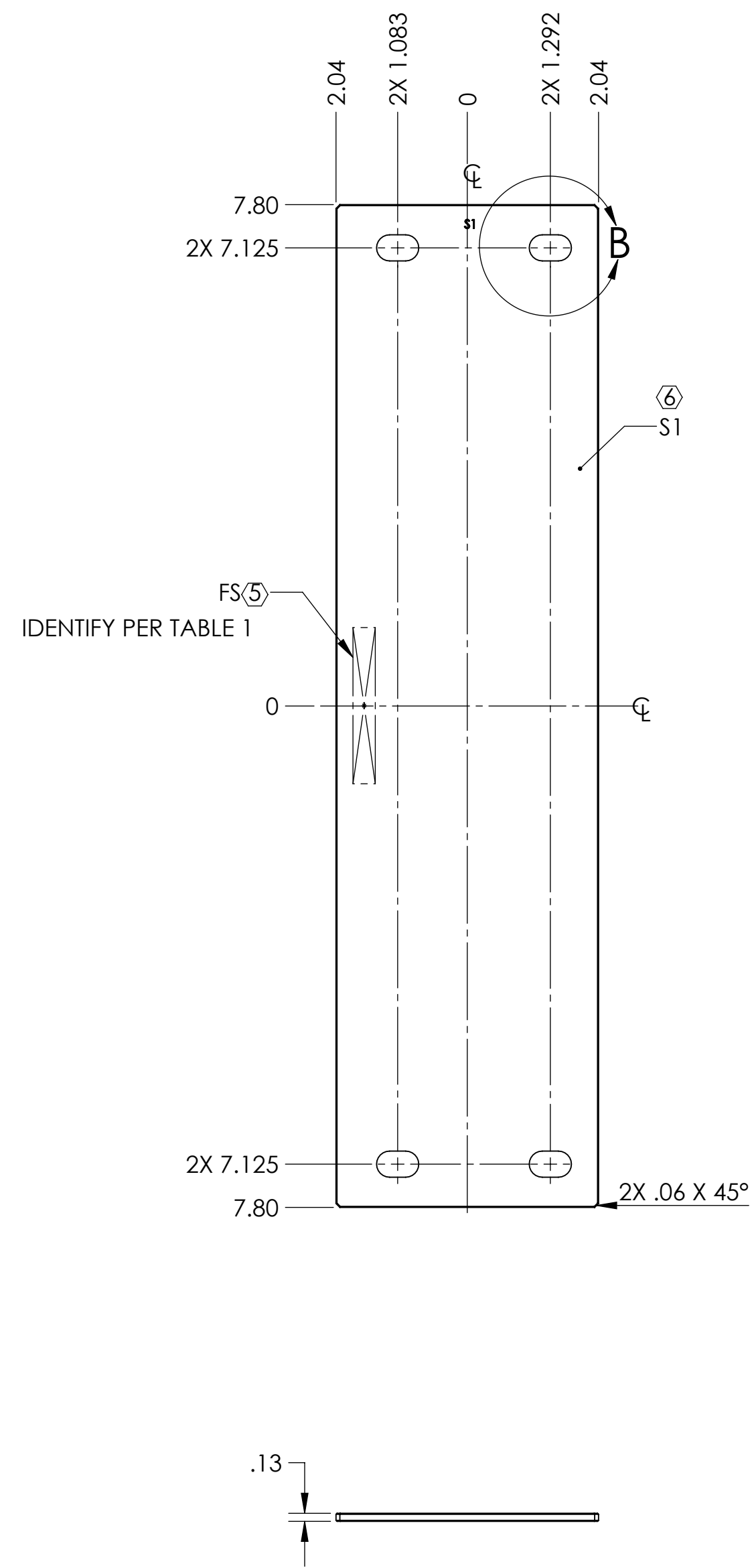
- NOTES CONTINUED:**
- ⑤ SCRIBE, ENGRAVE (A VIBRATORY TOOL MAY BE USED), LASER MARK OR MECHANICALLY STAMP (NO INKS OR DYES) DRAWING PART NUMBER, REVISION (AND VARIANT OR 'TYPE' IF APPLICABLE) ON NOTED SURFACE OF PART FOLLOWED ON THE NEXT LINE WITH A THREE DIGIT SERIAL NUMBER. SERIAL NUMBERS START AT 001 FOR THE FIRST ARTICLE AND PROCEED CONSECUTIVELY. USE MINIMUM 0.12" HIGH CHARACTERS, UNLESS THE SIZE OF THE PART DICTATES SMALLER CHARACTERS. EXAMPLE: DXXXXXX-VY, TYPE-XX, S/N XXX
 - ⑥ COAT SIDE 'S1' AS INDICATED ON DRAWING. REFER TO LIGO E1500201 FOR AIR COATING SPECIFICATIONS.
 - ⑦ CUT AWAY FROM SIDE 1 AS PER DETAIL 'A'.



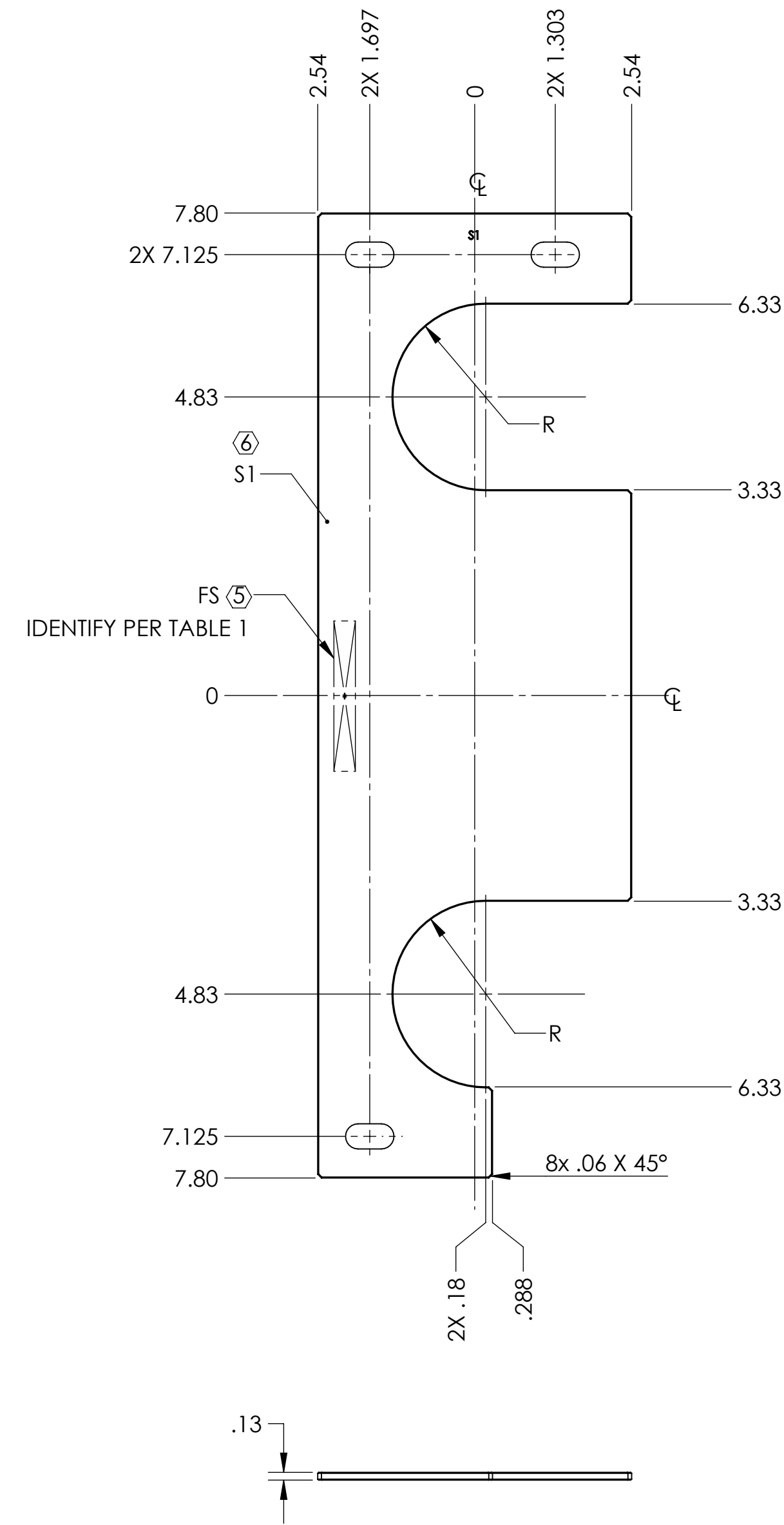
REV.	DATE	DCN #	DRAWING TREE #
v1	06 FEB 2015	E1500047-x0	-
v2	07 APR 2015	E1500163-x0	-
v3	26 JUN 2015	E1500293-x0	-

TABLE NO. 1	
TYPE	IDENTIFYING NO.
-101	D1500046-101-VX, S/N XXX (TOP)
-102	D1500046-102-VX, S/N XXX (TOP)
-103	D1500046-103-VX, S/N XXX (TOP)
-104	D1500046-104-VX, S/N XXX (TOP)

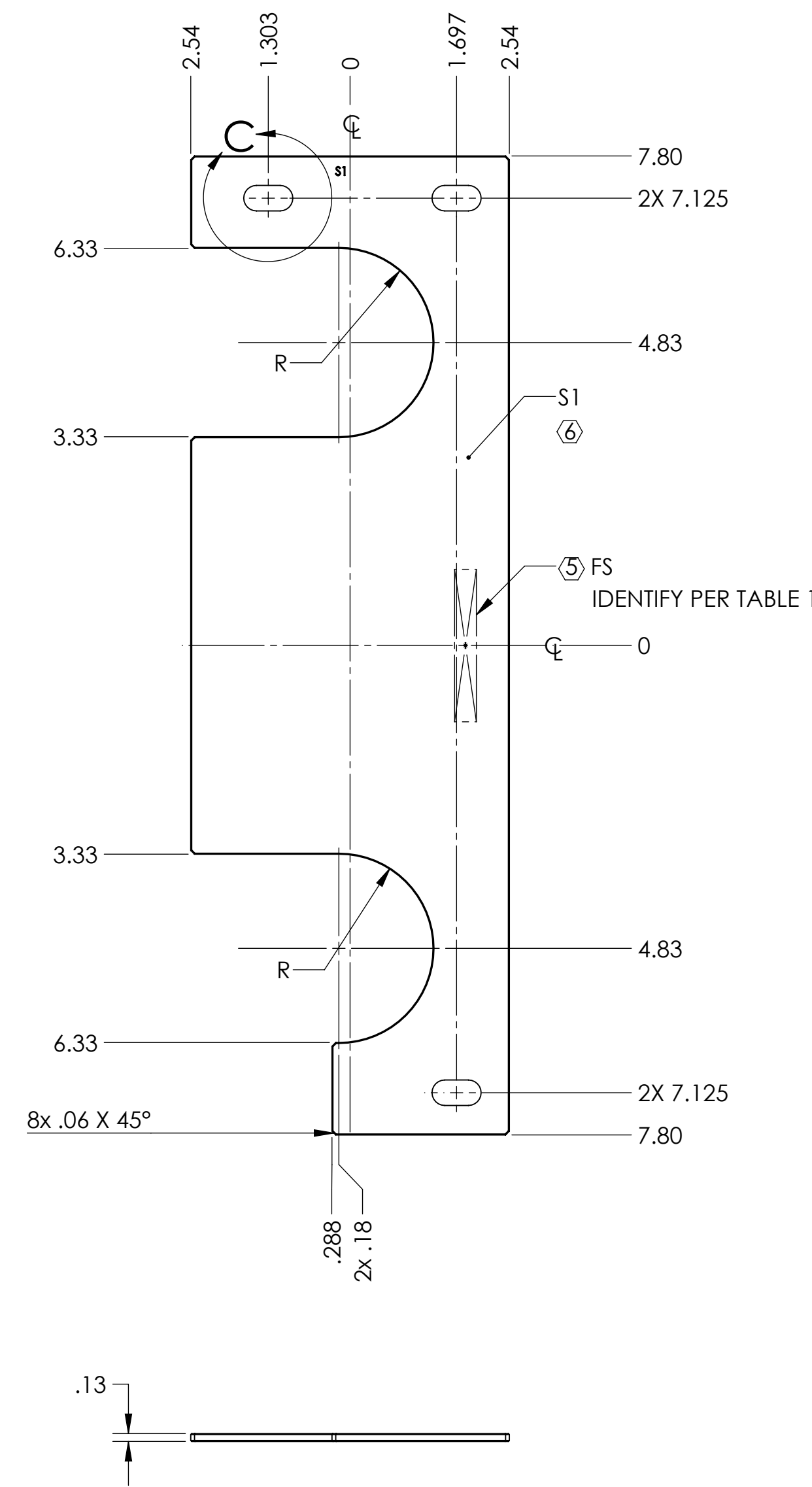
-101 DETAIL



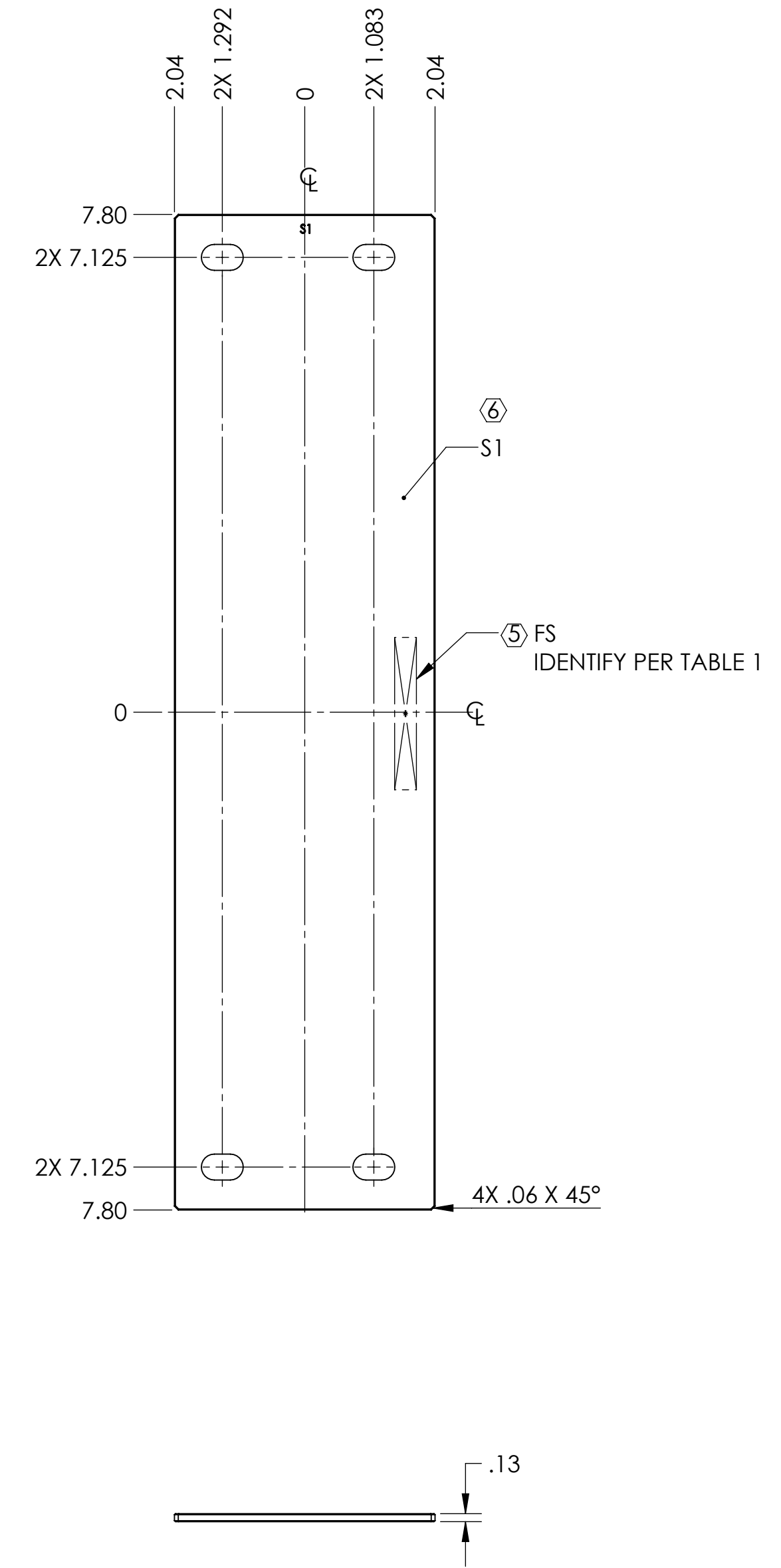
-102 DETAIL



-103 DETAIL



-104 DETAIL



NOTES AND TOLERANCES: (UNLESS OTHERWISE SPECIFIED)

- INTERPRET DRAWING PER ASME Y14.5-1994.
- REMOVE ALL SHARP EDGES, .005-.015, FOR MACHINED PARTS.
- DO NOT SCALE FROM DRAWING.
- ALL MACHINING FLUIDS MUST BE FULLY SYNTHETIC, FULLY WATER SOLUBLE AND FREE OF SULFUR, SILICONE, AND CHLORINE.

DIMENSIONS ARE IN INCHES

TOLERANCES:
.XX ± .02
.XXX ± .015

ANGULAR ± 1.0°

MATERIAL	SEE LIGO E1500201	FINISH	N/A μinch
NEXT ASSY	D0900295		

LIGO CALIFORNIA INSTITUTE OF TECHNOLOGY
MASSACHUSETTS INSTITUTE OF TECHNOLOGY

SYSTEM: ADVANCED LIGO SUB-SYSTEM: AOS

PART NAME: aLIGO, OMC, Stray light baffle, Outer Panel (TOP)

DESIGNER	E.SANCHEZ	26 JAN 2015	SIZE	DWG. NO.	REV.
DRAFTER	E.SANCHEZ	06 FEB 2015	D	D1500046	v3
CHECKER	SEE DCC	SEE DCC	SCALE	1:2	PROJECTION:
APPROVAL	SEE DCC	SEE DCC	SCALE	1:2	PROJECTION:

SHEET 1 OF 1