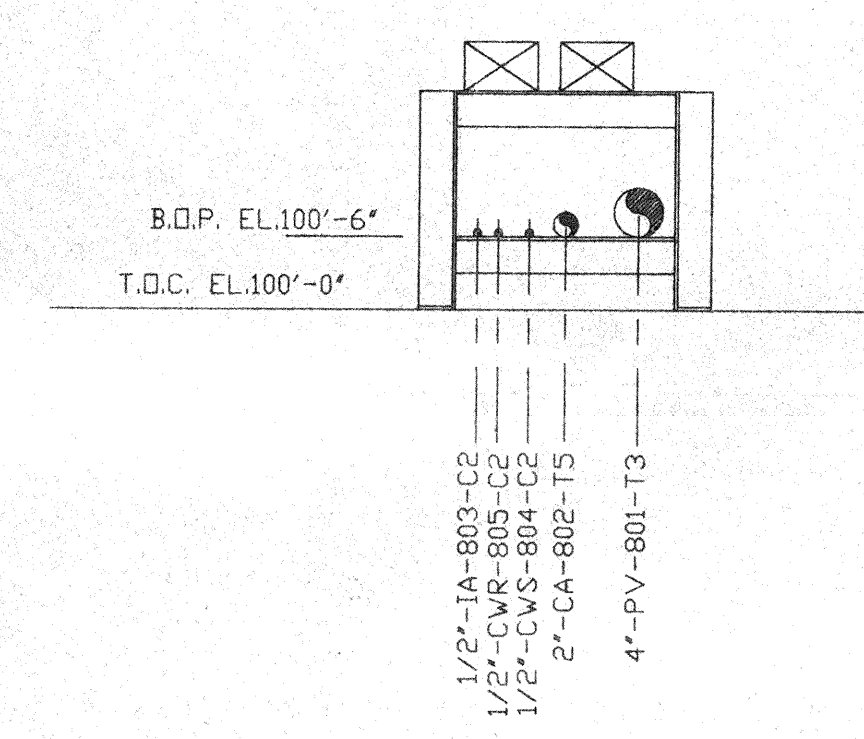
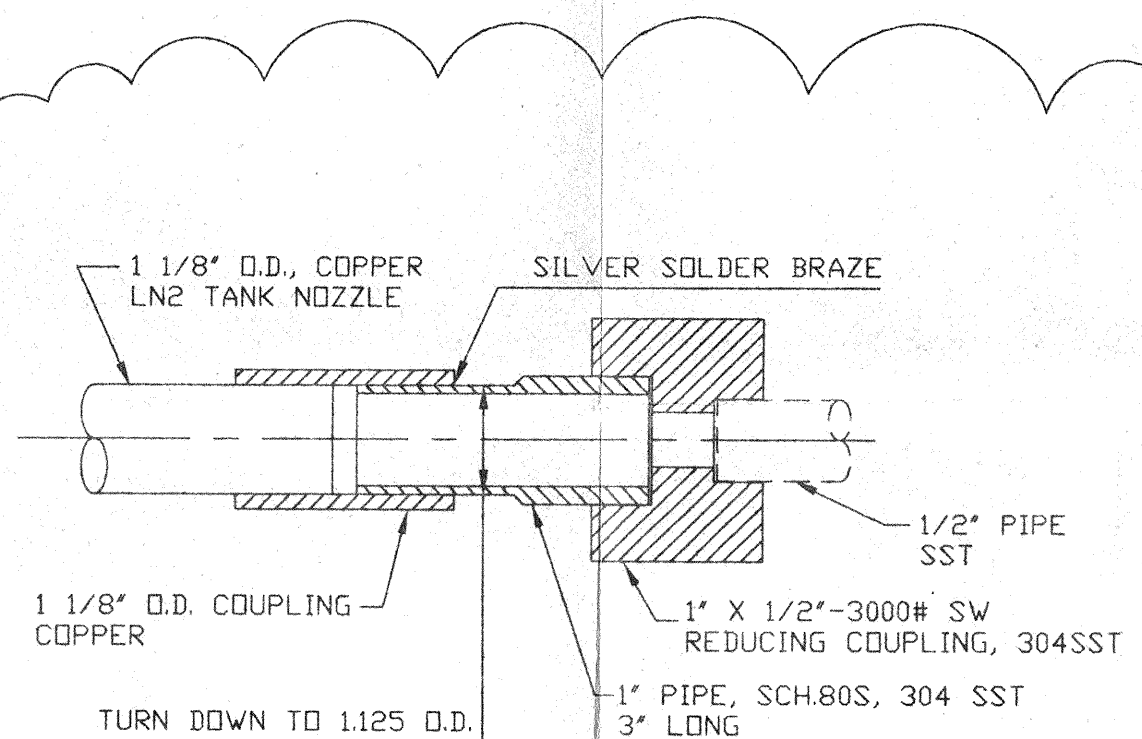


SECTION F
SCALE: 3/8"=1'-0" V049-5-043, SHT2

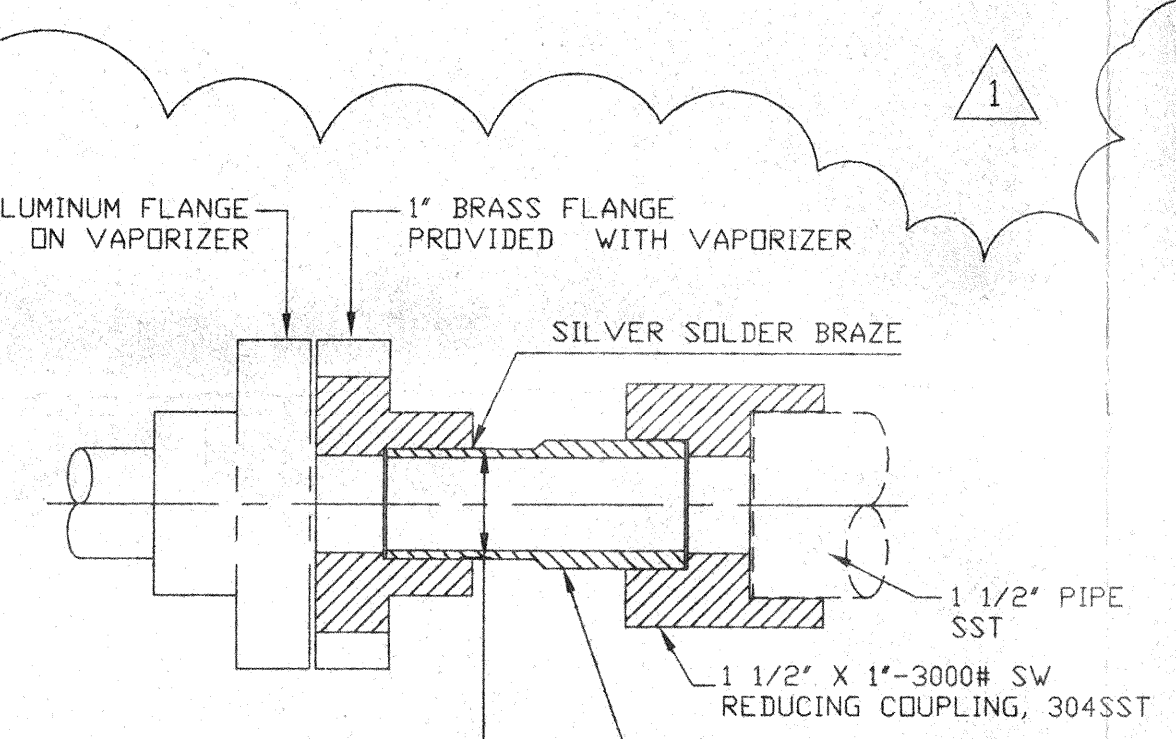
NOTES
1) ADJUST PUMP CART LEVELING LEGS TO RAISE CART WHEELS OFF THE FLOOR. THE LEGS ARE TO REST ON THE 1/2" THICK VIBRATION ISOLATION PADS. USE MASON TYPE 'BBP' DURROMETER 50, UNDER LEGS. TYPICAL 4 LEGS PER CART.



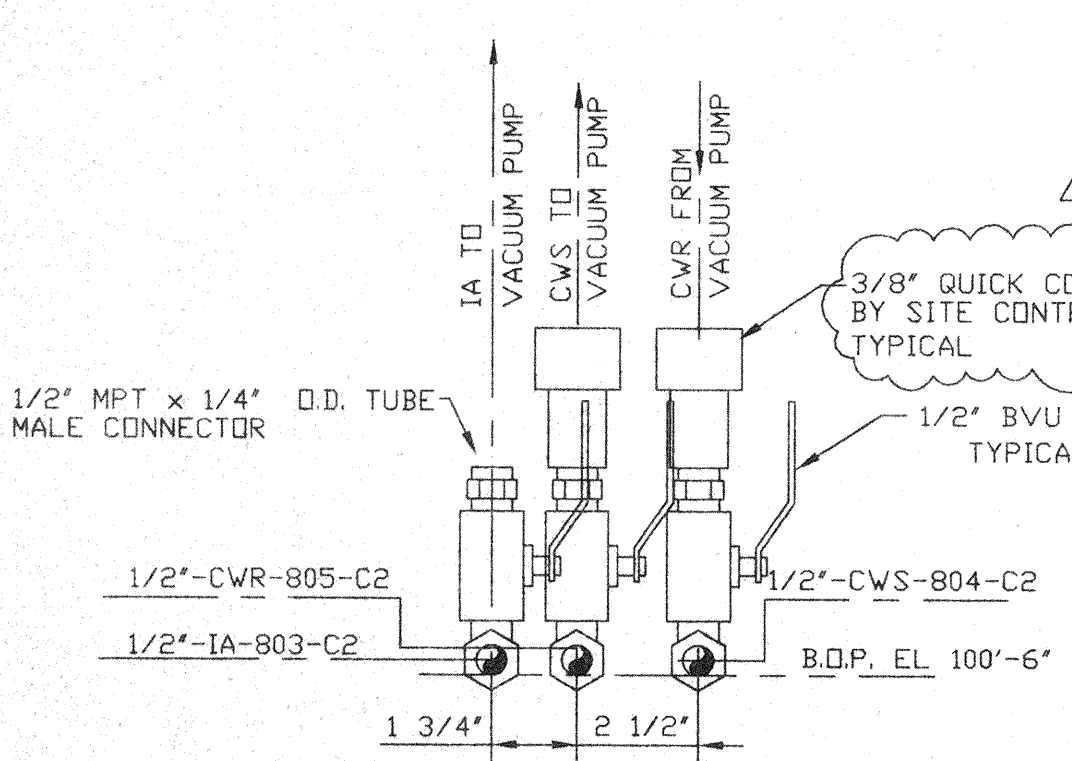
SECTION A
SCALE: 3/4"=1'-0" V049-5-043, SHT1



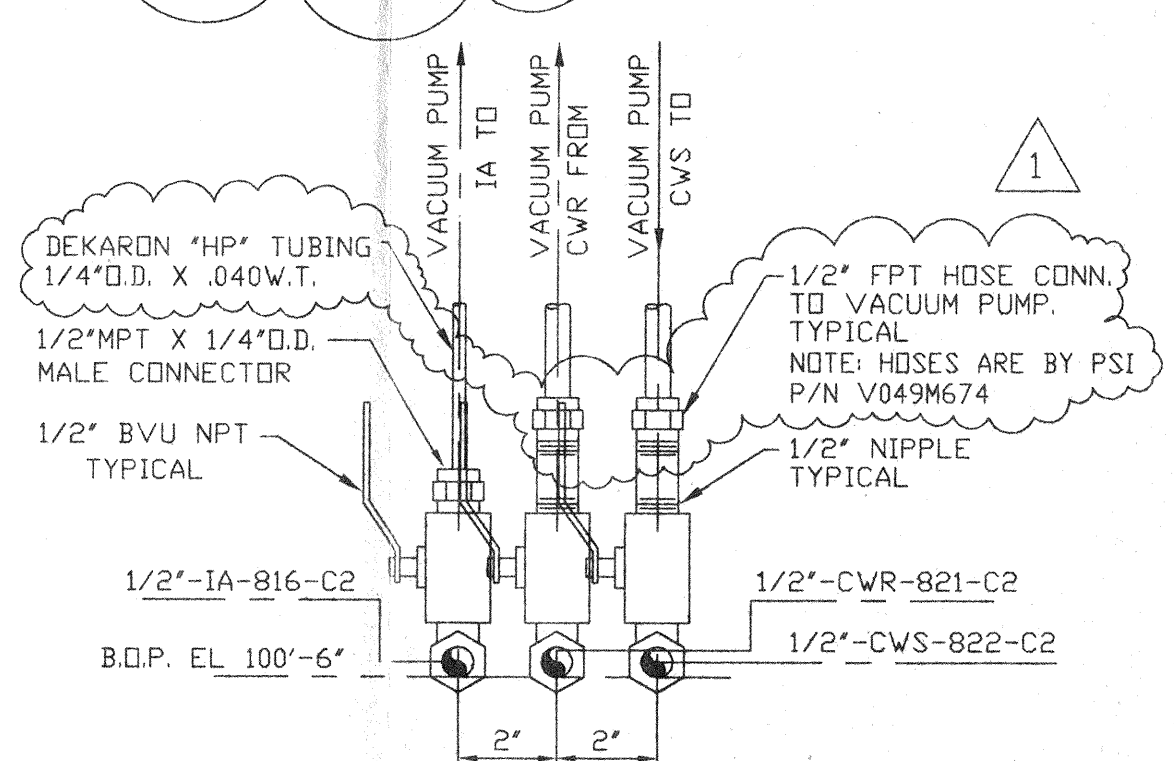
DETAIL 6
SCALE: HALF



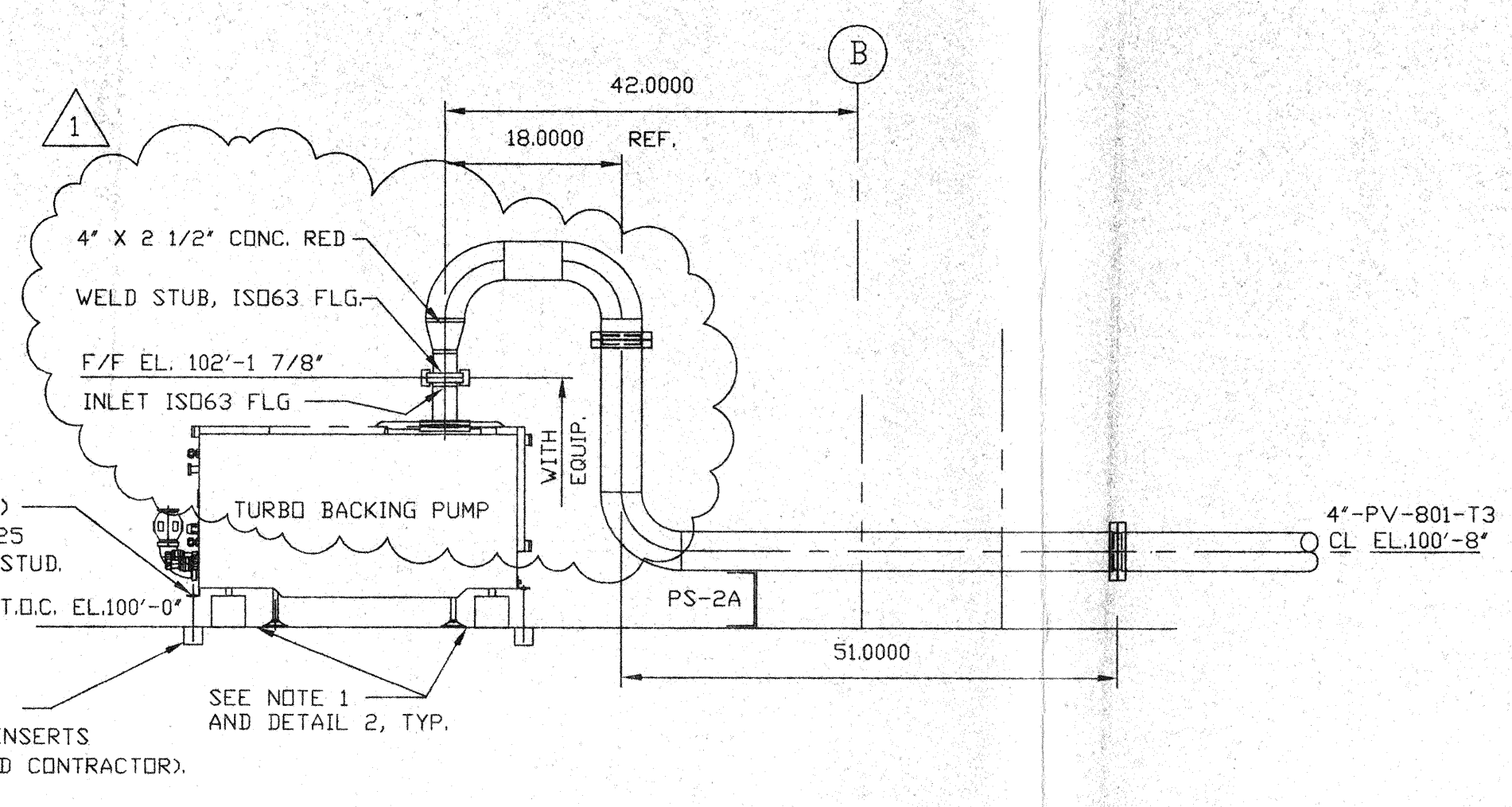
DETAIL 5
SCALE: HALF V049-5-043, SHT2



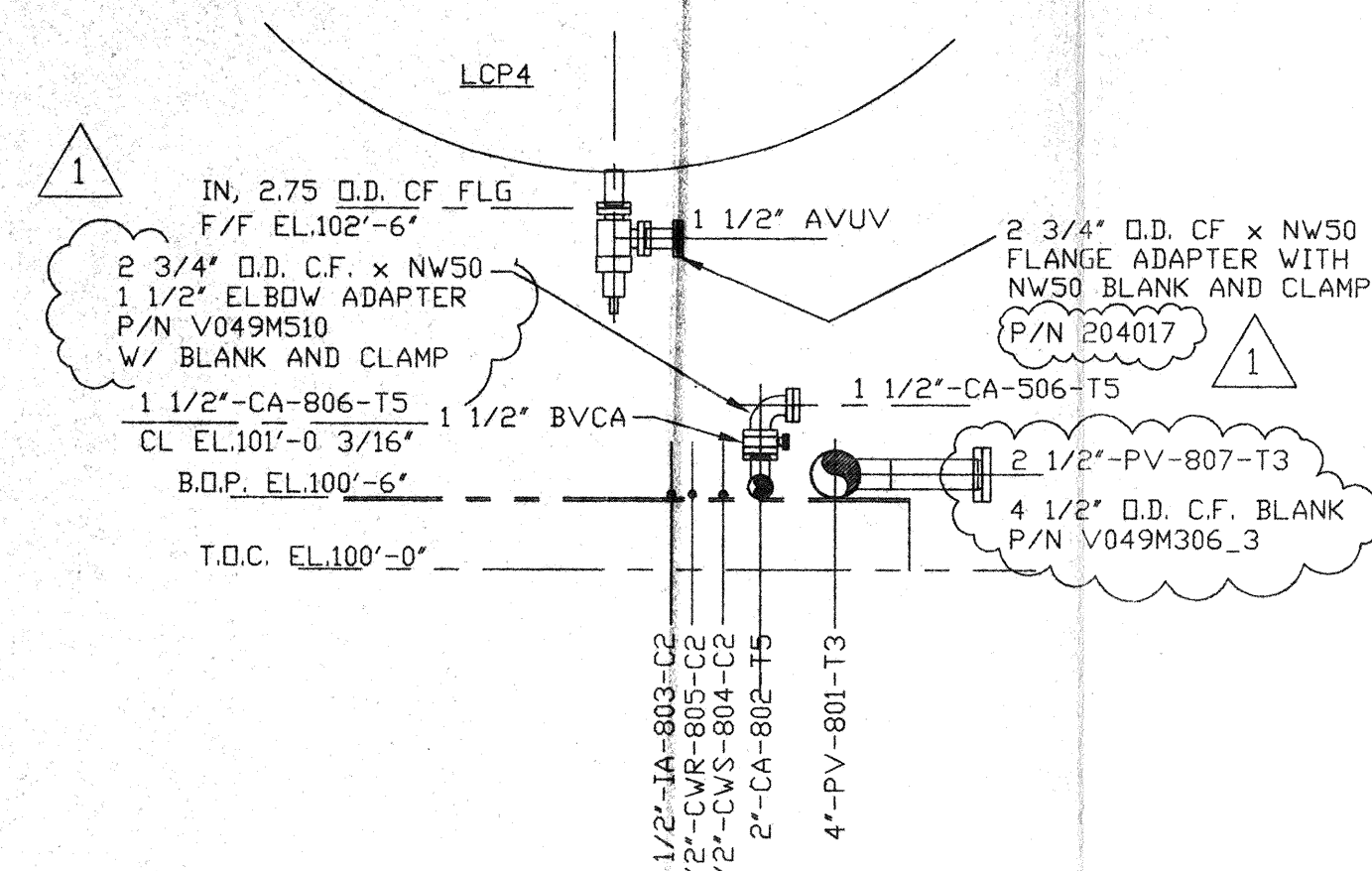
DETAIL 1
SCALE: 3"=1'-0" V049-5-043, SHT1



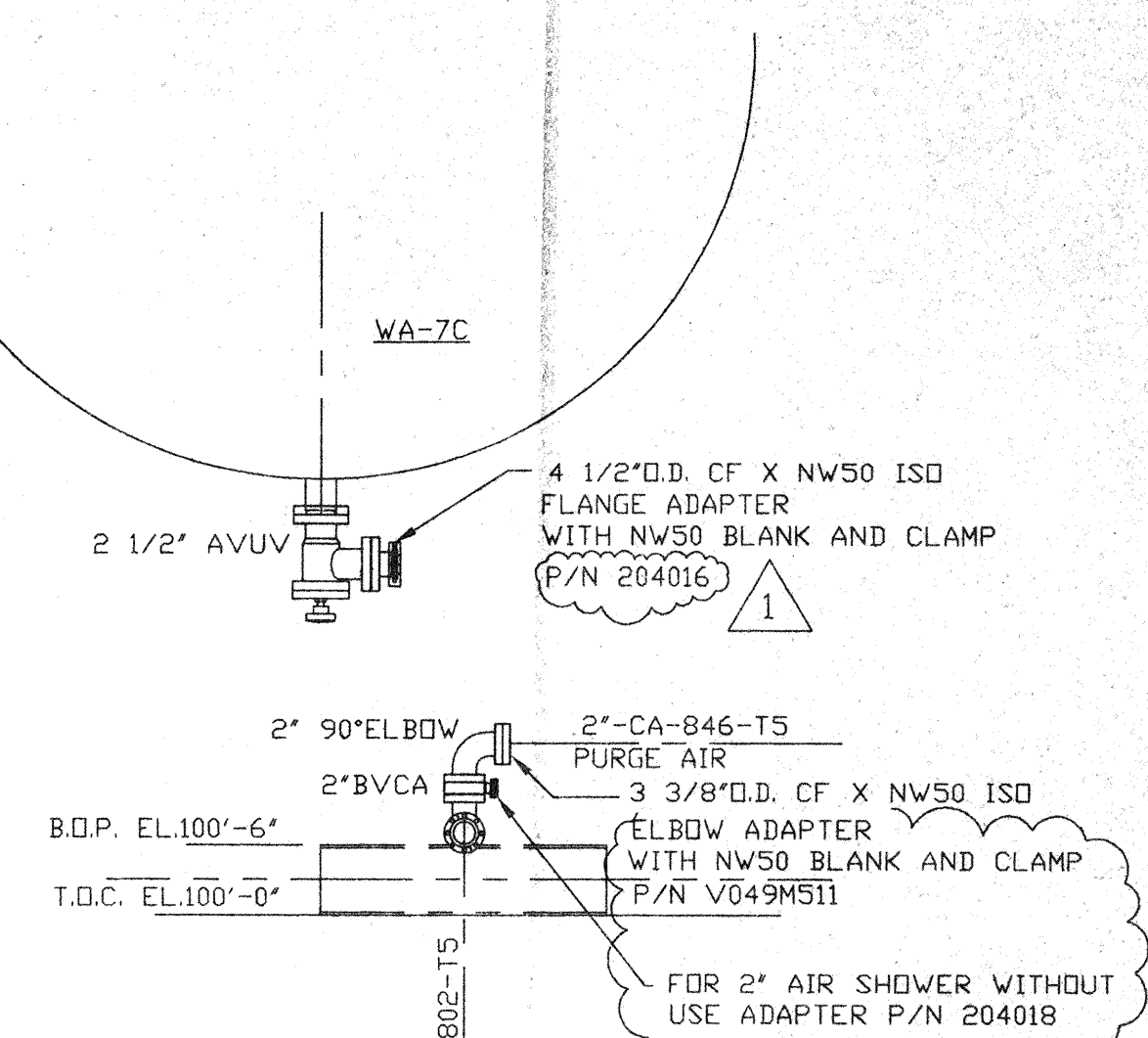
DETAIL 4
SCALE: 3"=1'-0" V049-5-043, SHT1



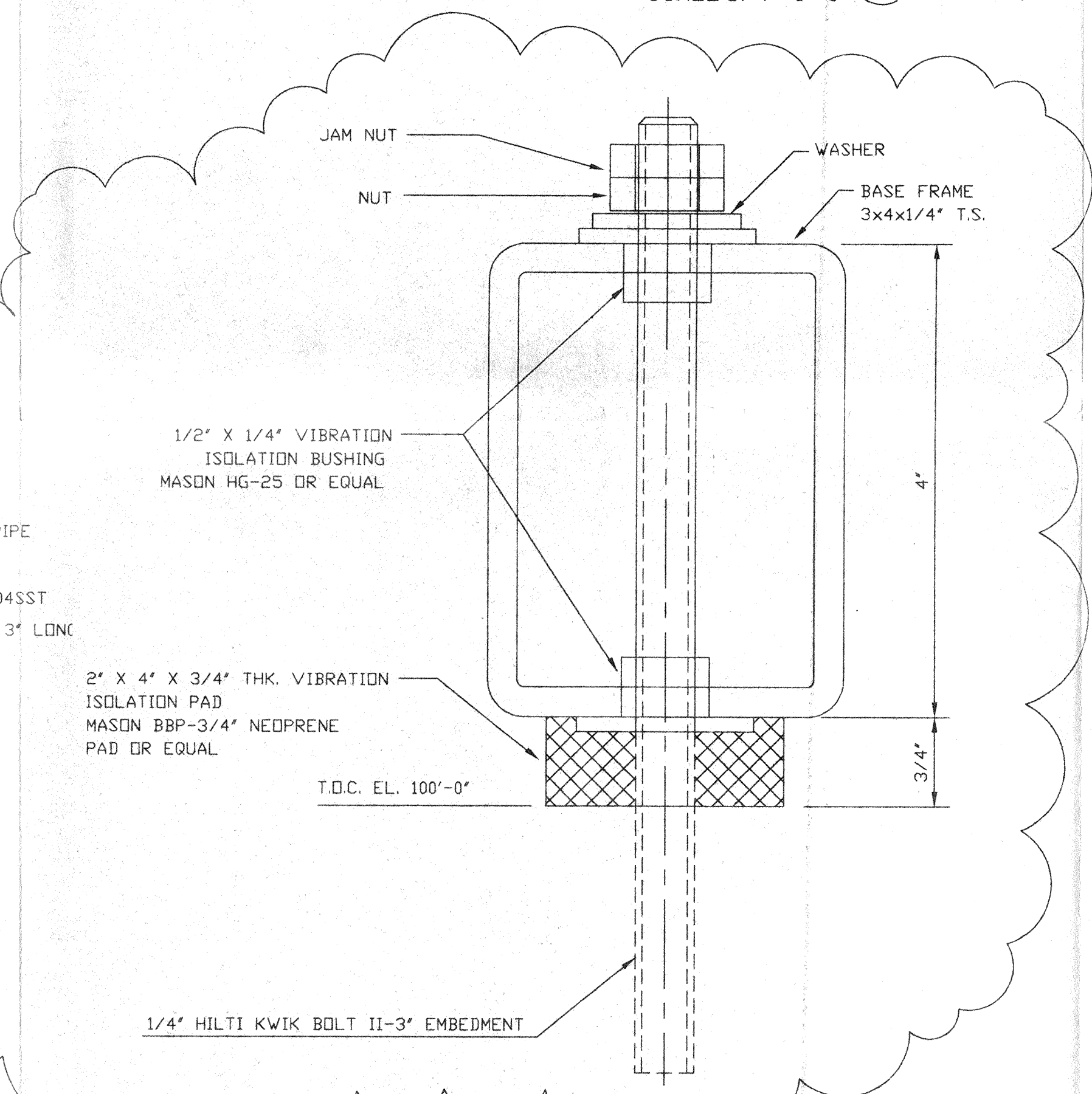
SECTION C
SCALE: 3/4"=1'-0" V049-5-043, SHT1



SECTION D
SCALE: 3/4"=1'-0" V049-5-043, SHT1



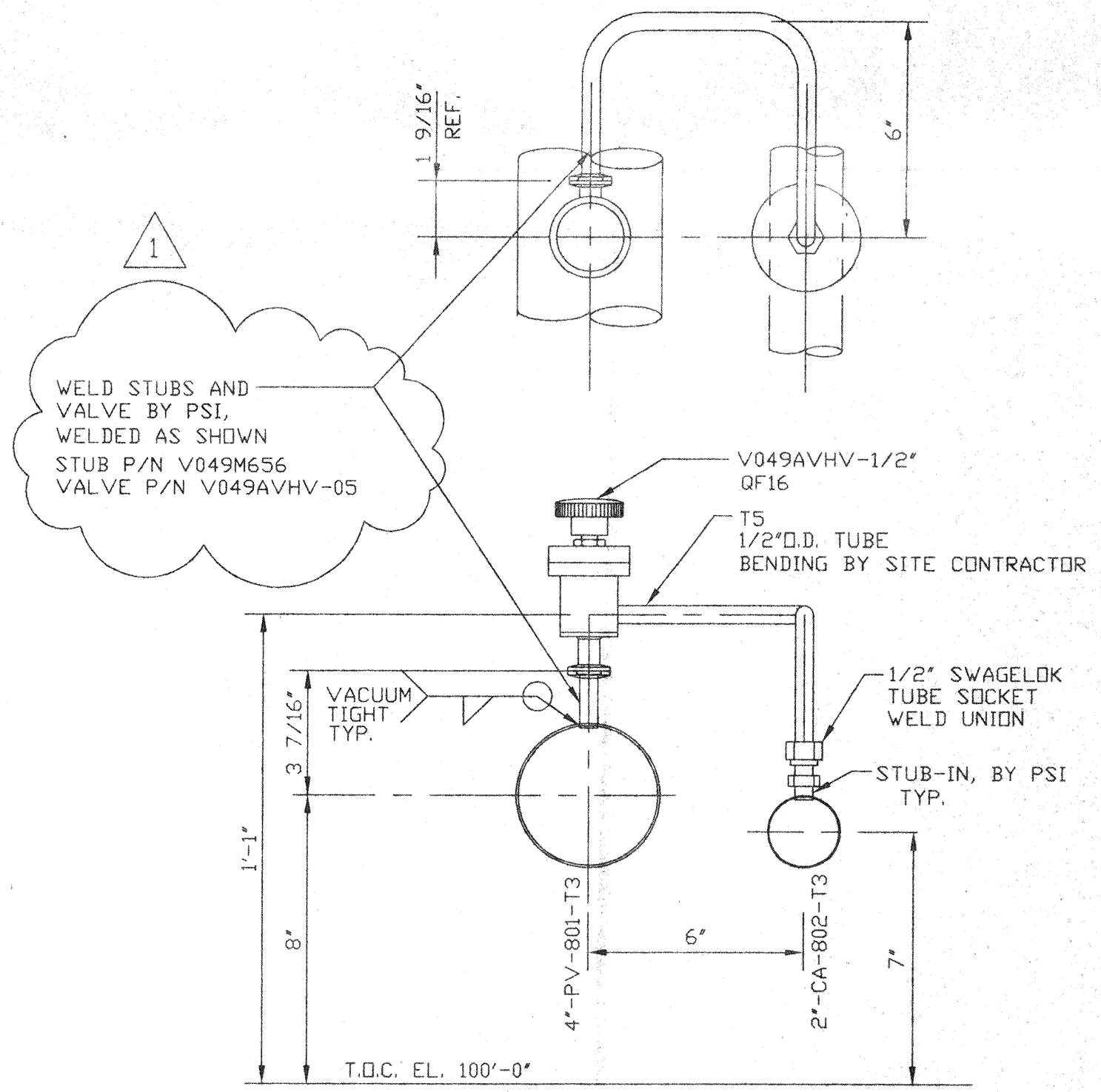
SECTION E
SCALE: 3/4"=1'-0" V049-5-043, SHT1



VIBRATION ISOLATION PAD
TYPICAL

NOTE: THIS TYPE OF VIBRATION PAD ASSEMBLY IS TO BE USED UNDER AIR COMPRESSOR SKID AND ELECTRICAL CABINETS. FOR 50 CFM AIR COMPRESSOR USE 4 BOLTED POINTS. USE 2" X 4" X 3/4" PADS, TYPICAL. CUT BOLT HOLES TO SUIT. ANCHOR BOLT METAL IS NOT TO BE IN CONTACT WITH BASE FRAME METAL. VIBRATION PADS & BUSHINGS & ANCHOR BOLTS BY FIELD CONTRACTOR.

DETAIL 2
SCALE: FULL V049-5-021, SHT1



DETAIL 3
SCALE: 3"=1'-0" V049-5-043, SHT1

DWG. NO.	DESCRIPTION	DWG. NO.	DESCRIPTION
V049-5-043	PIPING ARRANGEMENT PLAN RIGHT END STATION	V049-5-008	EQUIPMENT ARRANGEMENT RIGHT END STATION
1101102	LIGO VACUUM EQUIPMENT END STATION		

DO NOT SCALE THIS DRAWING	USED ON:	REV	DESCRIPTION
0			

UNLESS OTHERWISE SPECIFIED DIMENSIONS ARE IN INCHES	TOLERANCES:	1	ISSUED FOR CONSTRUCTION
FRACTIONAL ±	ANGULARMACH ±	SM	DMW
TWO PLACE DECIMAL ±	BEND ±	RDC	REC
THREE PLACE DECIMAL ±	TYPICAL	LD	05/22/98
FINISHED SURFACE RMS	BREAK CORNERS IN	RM	1.13.97
REMOVE ALL BURRS	OUT-	0406	

PROCESS SYSTEMS INTERNATIONAL INC.		PIPING ARRANGEMENT, SECTIONS RIGHT END STATION - AREA 800 LOUISIANA SITE LIGO VACUUM EQUIPMENT	
GAD FILE	SIZE	DWG. NO.	REV
V0495045	D	V049-5-045	1
SCALE AS NOTED	SHEET	1 OF 1	

MAY 23 1998