

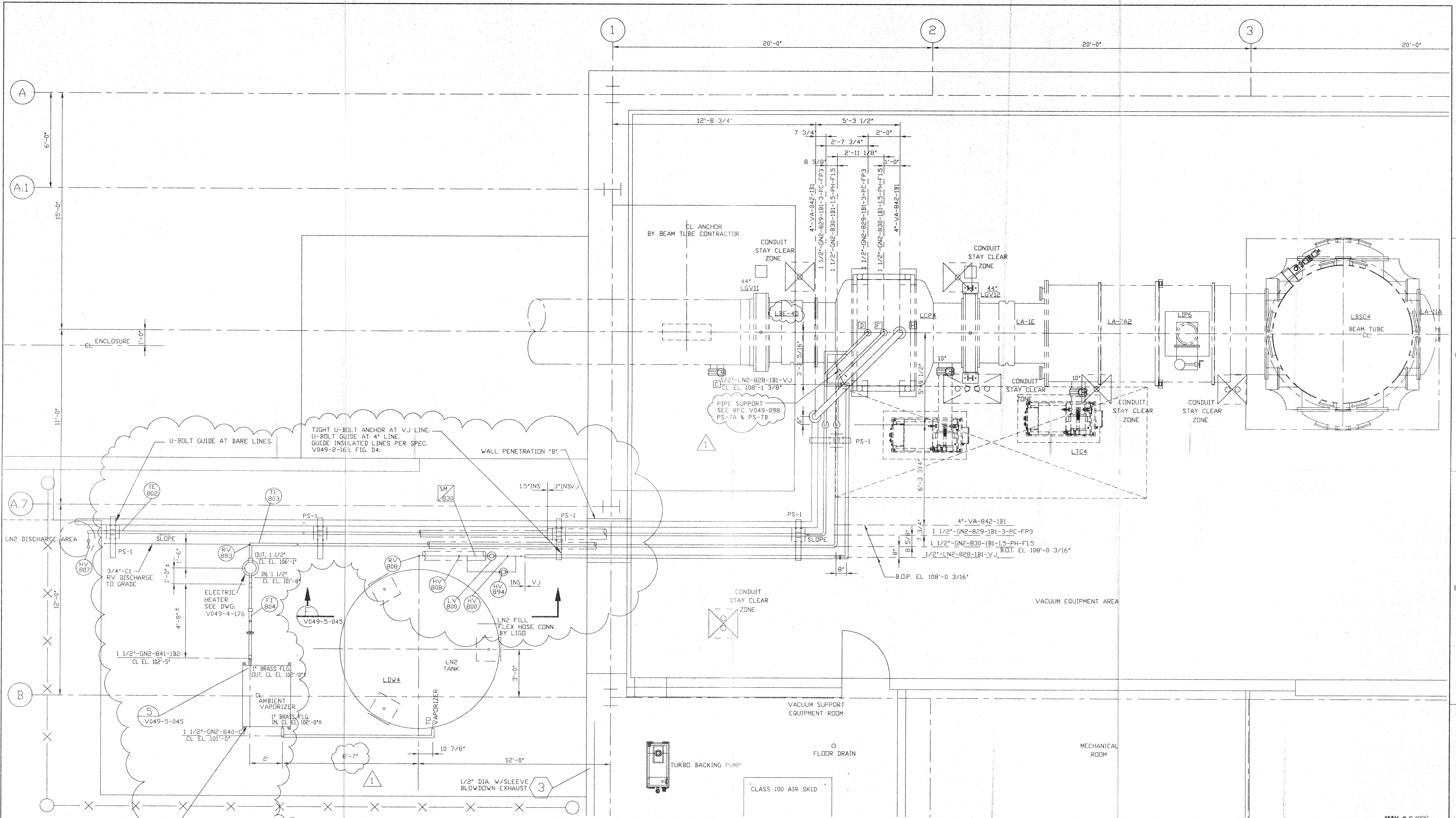
- NOTES:**
1. SEE SPEC. V049-2-025 FOR INSTALLATION/ COMMISSIONING INFORMATION.
  2. FOR TUBING/ PIPE SUPPORT REQUIREMENTS, SEE SPEC. V049-2-025, SECTION 10.
  3. FOR GATE VALVE ANNULUS TUBING INSTALLATION SEE DWG. V049-5-008.

PLAN @ FLOOR

PROPRIETARY AND CONFIDENTIAL THIS DOCUMENT CONTAINS PROPRIETARY INFORMATION BELONGING TO PROCESS SYSTEMS INTERNATIONAL, INC. OR ITS AFFILIATED COMPANIES AND SHALL BE USED ONLY FOR THE PURPOSE FOR WHICH IT WAS SUPPLIED. IT SHALL NOT BE COPIED, REPRODUCED OR OTHERWISE USED, NOR SHALL SUCH INFORMATION BE FURNISHED IN WHOLE OR IN PART TO OTHERS EXCEPT IN ACCORDANCE WITH THE TERMS OF ANY AGREEMENT UNDER WHICH IT WAS SUPPLIED OR WITH THE PRIOR WRITTEN CONSENT OF PROCESS SYSTEMS INTERNATIONAL, INC. AND SHALL BE RETURNED UPON REQUEST.		UNLESS OTHERWISE SPECIFIED DIMENSIONS ARE IN INCHES TOLERANCES: FRACTIONAL ± ANGULAR/MACH ± TWO PLACE DECIMAL ± THREE PLACE DECIMAL ± FINISHED SURFACE RMS BREAK CORNERS IN REMOVE ALL BURRS.		1 ISSUED FOR CONSTRUCTION 0 ISSUED FOR FDR		RDC REC LD 05/22 98 0577 SM DMW RDC REC RM 113.97 0406		CAD FILE V0495043/5043S1 SIZE DWG. NO. V049-5-043 SCALE 3/8"=1'-0" SHEET 1 OF 2	
DWG. NO. DESCRIPTION REFERENCE DRAWINGS		DWG. NO. DESCRIPTION REFERENCE DRAWINGS		DO NOT SCALE THIS DRAWING USED ON: NEXT ASS'Y:		ISSUE DESCRIPTION		PROCESS SYSTEMS INTERNATIONAL, INC. 20 WALKUP DR. WESTBOROUGH, MASSACHUSETTS 01581 USA PIPING ARRANGEMENT, PLAN RIGHT END STATION - AREA 800 LOUISIANA SITE LIGO VACUUM EQUIPMENT	
V049-0-025 P & ID RIGHT END STATION V049-0-006 P & ID 80K CRYOPUMP V049-5-008 EQUIPMENT ARRANGEMENT RIGHT END STATION 1101102 LIGO VACUUM EQUIPMENT END STATION		V049-0-025 P & ID RIGHT END STATION V049-0-006 P & ID 80K CRYOPUMP V049-5-008 EQUIPMENT ARRANGEMENT RIGHT END STATION 1101102 LIGO VACUUM EQUIPMENT END STATION		1 ISSUED FOR CONSTRUCTION 0 ISSUED FOR FDR		RDC REC LD 05/22 98 0577 SM DMW RDC REC RM 113.97 0406		CAD FILE V0495043/5043S1 SIZE DWG. NO. V049-5-043 SCALE 3/8"=1'-0" SHEET 1 OF 2	

MAY 28 1998 121634





NOTE:

1. FIELD TO DETERMINE ACTUAL ELEVATIONS OF NOZZLES BEFORE FABRICATION OF PIPING.
2. BRASS 4-HOLE FLANGES ARE PROVIDED WITH AMBIENT VAPORIZERS. THEY ARE TO BE SILVER SOLDER BRAZED TO AN ADAPTER TO S/S PIPE, TO BE PROVIDED BY PSI WITH THE PIPE SPOOLS. SEE DETAIL 5 ON DWG. V049-5-045.

PLAN @ EL. 112'-6"

MAY 28 1998

<b>PROCESS SYSTEMS INTERNATIONAL INC.</b> 20 WALKUP DR. WESTBOROUGH, MASSACHUSETTS 01581 USA			
<b>PIPING ARRANGEMENT, PLAN</b> <b>RIGHT END STATION - 800 AREA</b> <b>LOUISIANA SITE</b> <b>LIGO VACUUM EQUIPMENT</b>			
CAD FILE	SIZE	DWG. NO.	REV.
V0495043/5043S2	D	V049-5-043	1
SCALE 3/8"=1'-0"		SHEET 2 OF 2	

MAY 21 1998 - 15:25:50