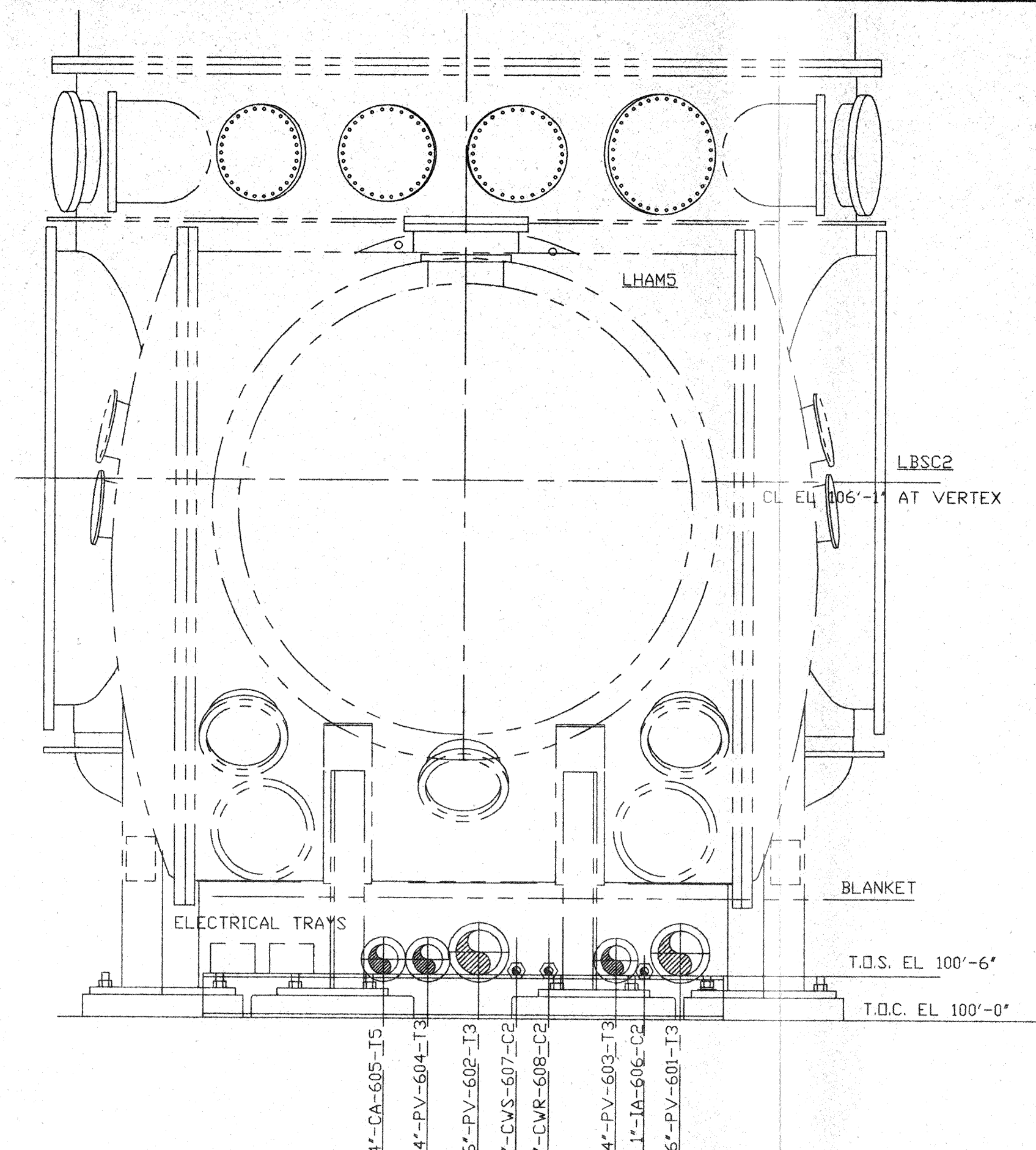
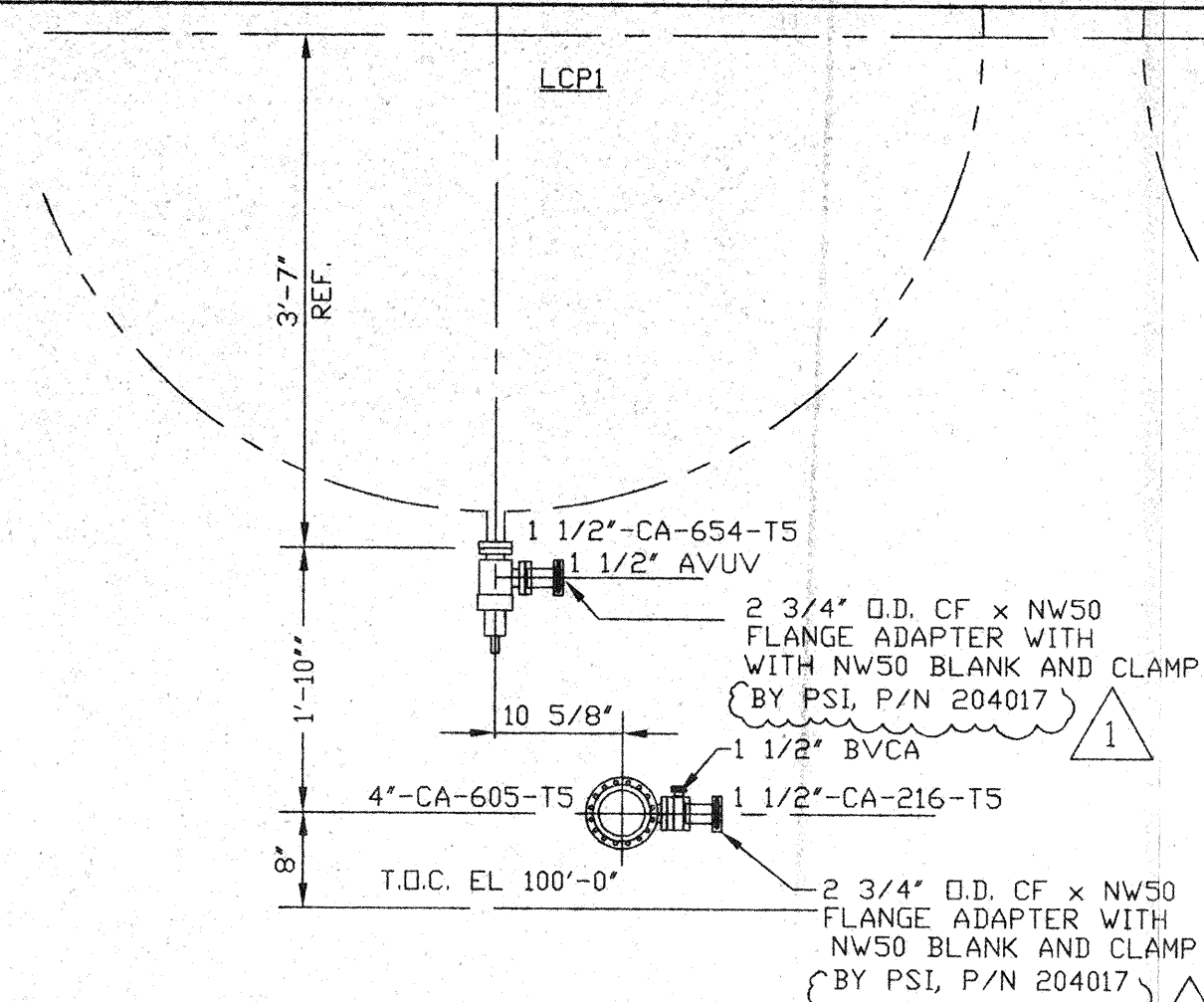


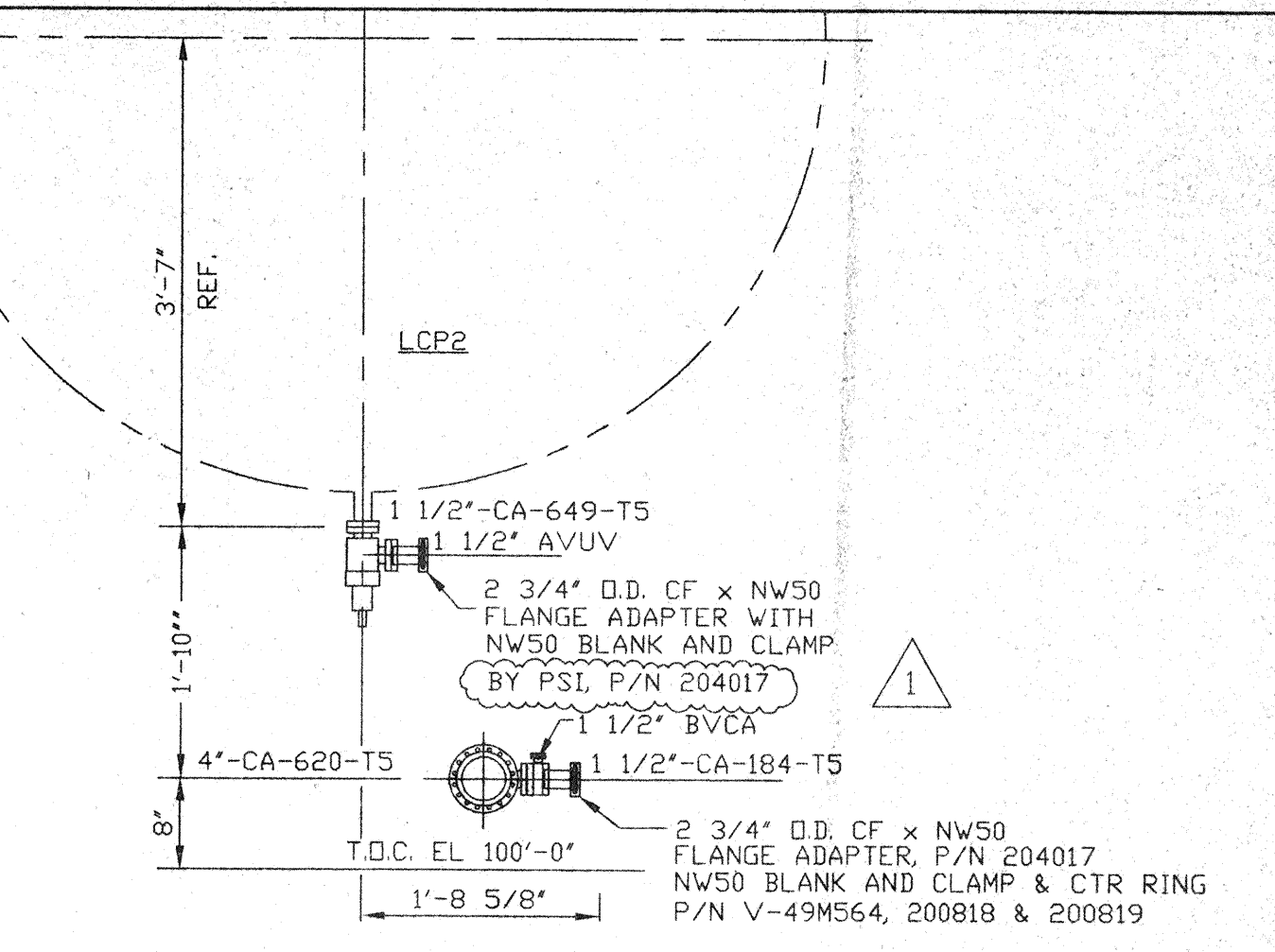
SECTION A
SCALE: 3/4"=1'-0" V049-5-040, SHT.1



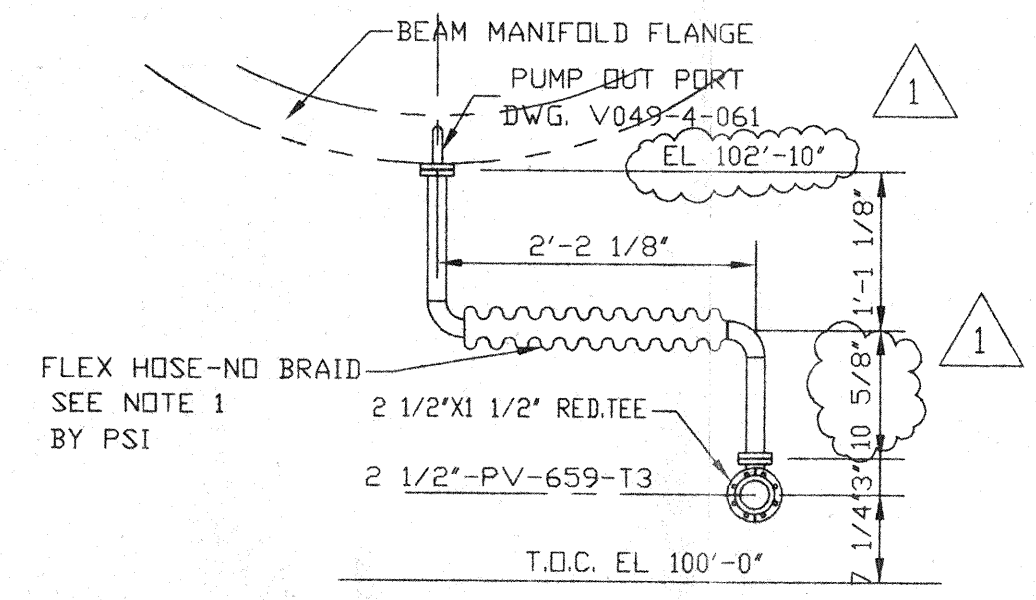
SECTION B
SCALE: 3/4"=1'-0" V049-5-040, SHT.1



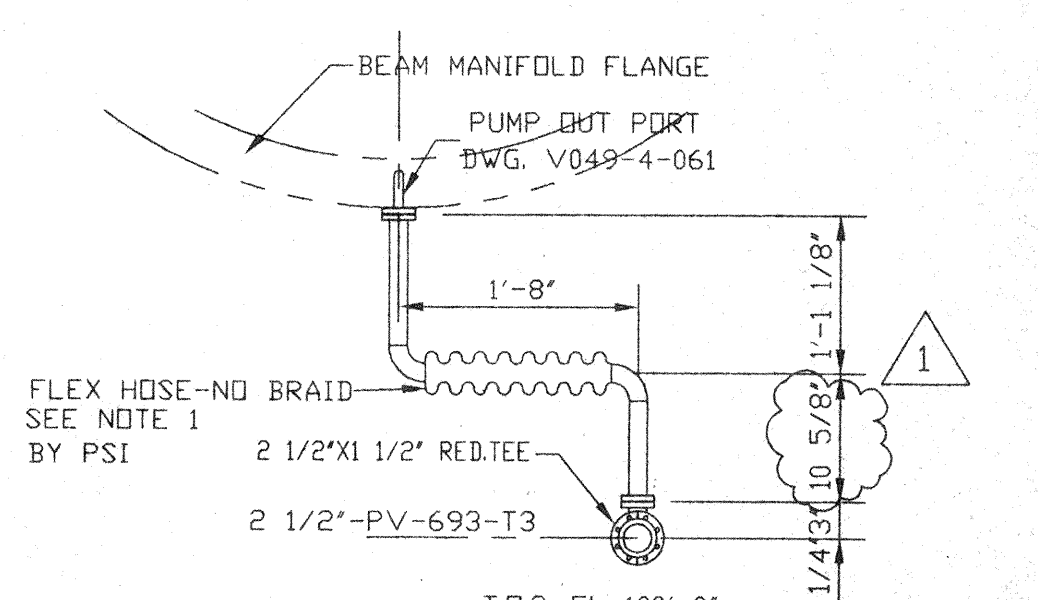
SECTION M
SCALE: 3/4"=1'-0" V049-5-040, SHT.4



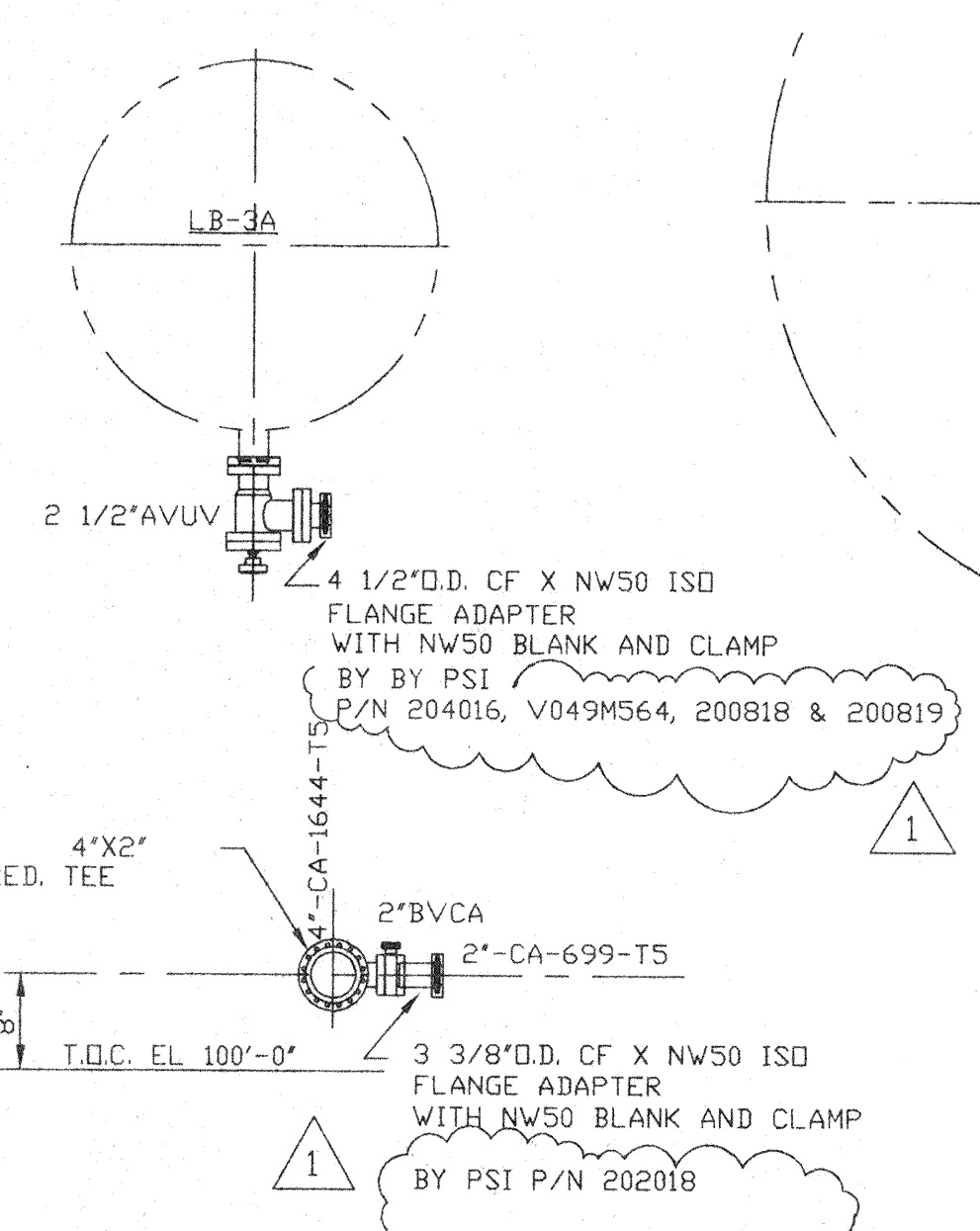
SECTION L
SCALE: 3/4"=1'-0" V049-5-040, SHT.3



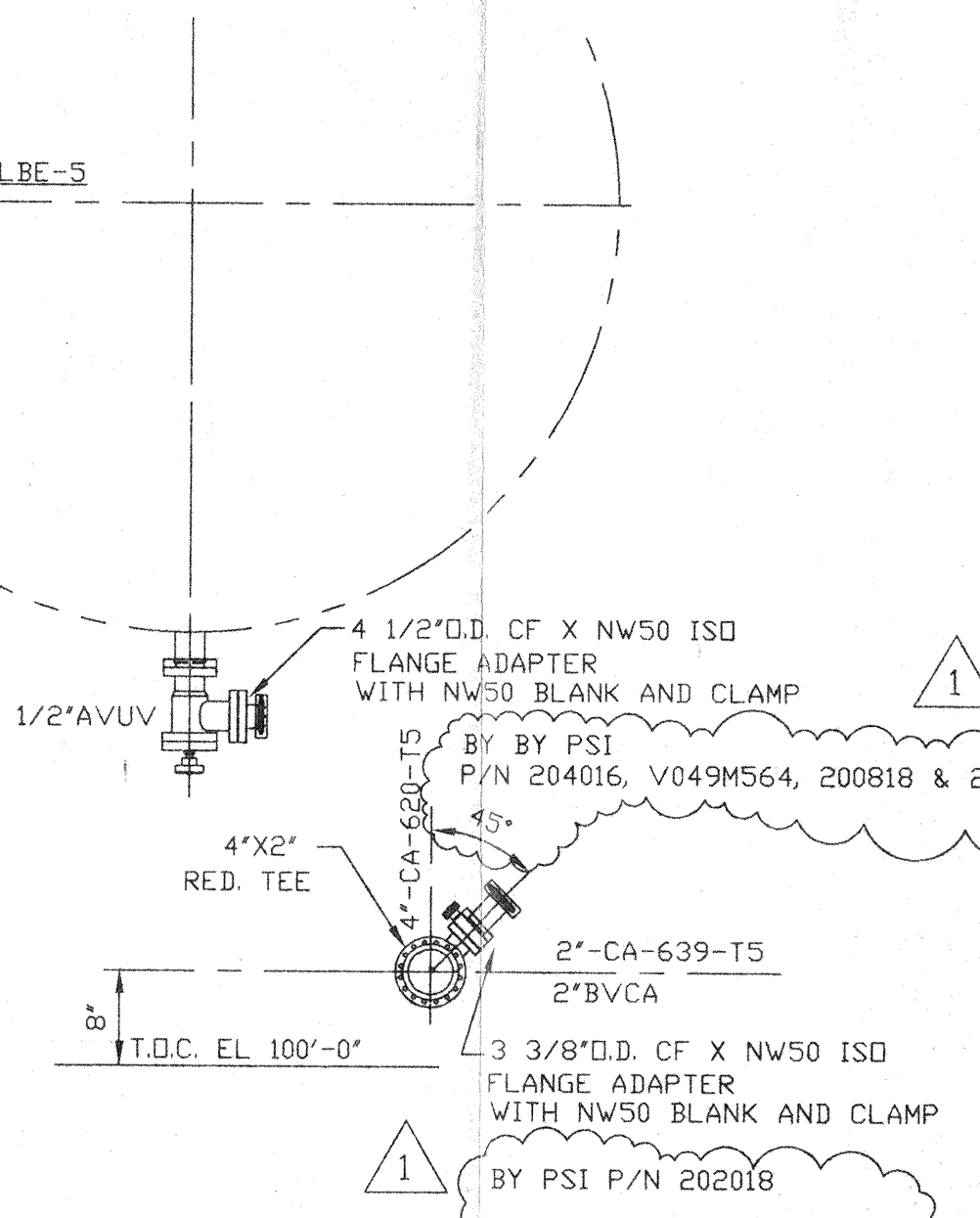
SECTION V (RIGHT ARM)
SCALE: 3/4"=1'-0" V049-5-040, SHT.1
TYP. BRANCH CONNECTION FOR LINES:
1 1/2"-PV-659-T3 1 1/2"-PV-644-T3
1 1/2"-PV-640-T3 1 1/2"-PV-635-T3
1 1/2"-PV-617-T3



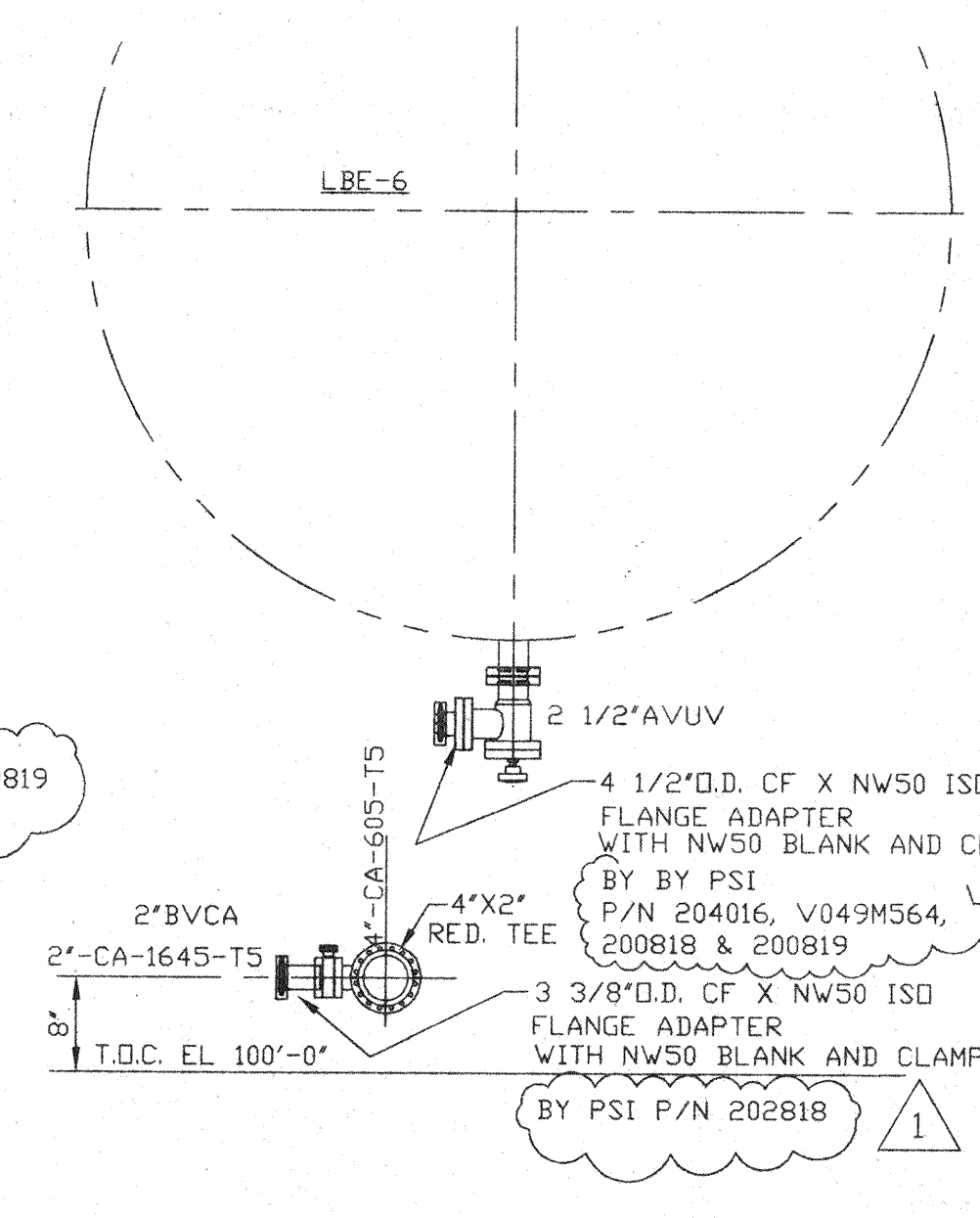
SECTION W (LEFT ARM)
SCALE: 3/4"=1'-0" V049-5-040, SHT.2
TYP. BRANCH CONNECTION FOR LINES:
1 1/2"-PV-693-T3 1 1/2"-PV-694-T3
1 1/2"-PV-695-T3 1 1/2"-PV-696-T3
1 1/2"-PV-697-T3



SECTION C
SCALE: 3/4"=1'-0" V049-5-040, SHT.1

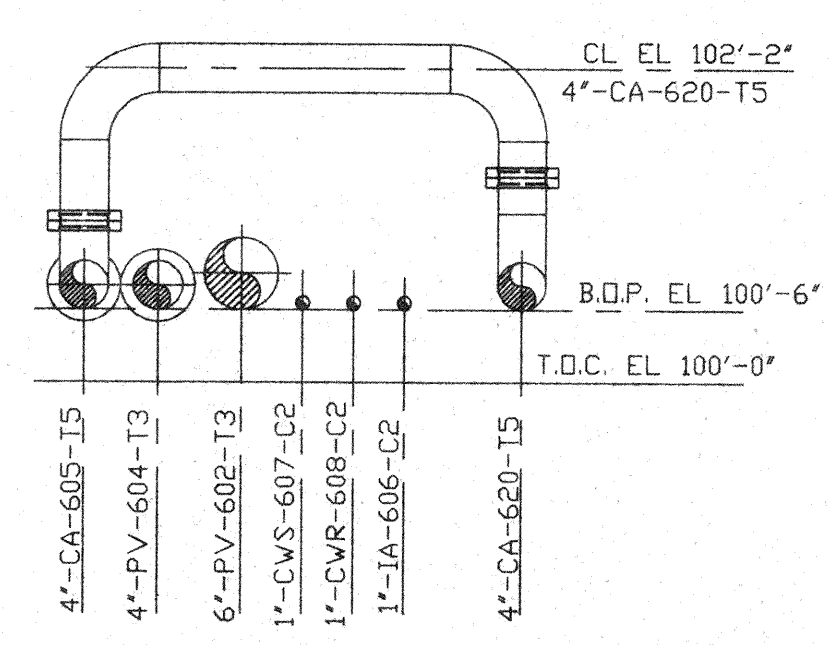


SECTION D
SCALE: 3/4"=1'-0" V049-5-040, SHT.1

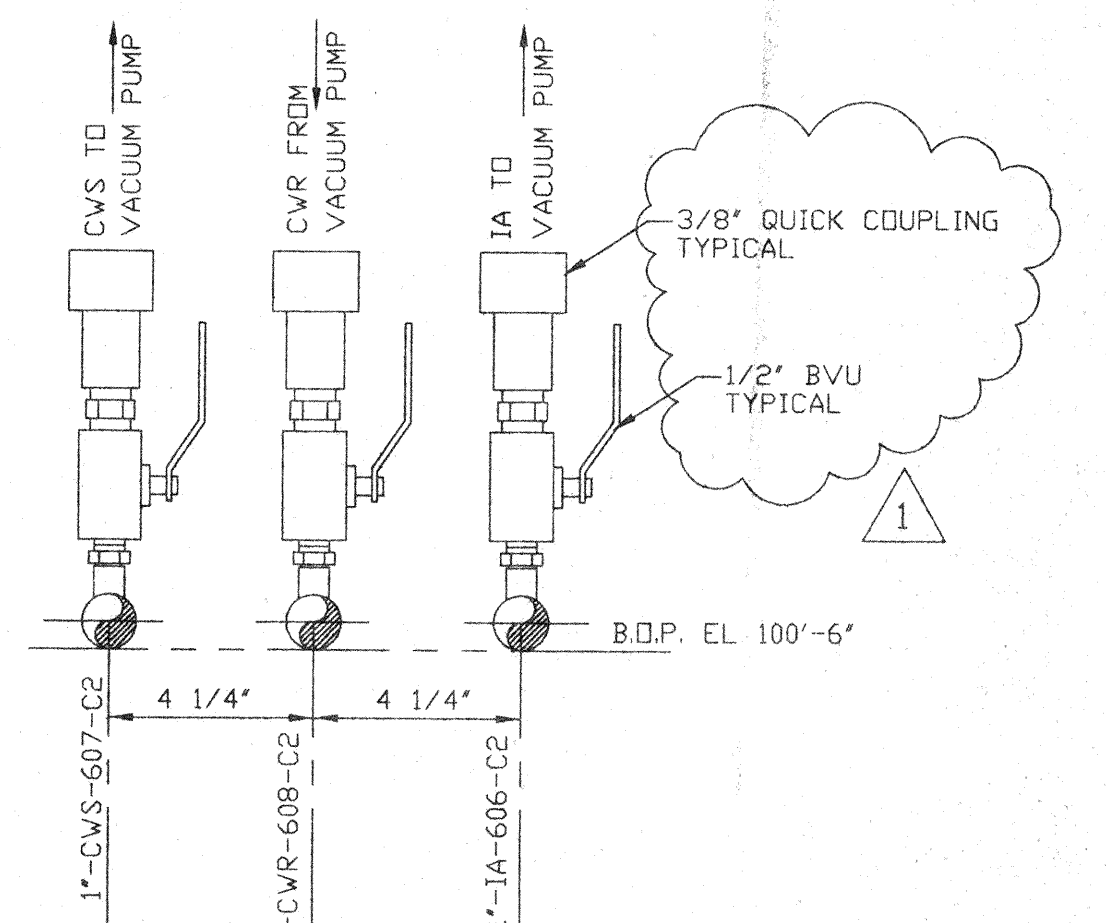


SECTION E
SCALE: 3/4"=1'-0" V049-5-040, SHT.2

NOTES
1) FOR FLEX HOSE REQUIREMENTS SEE SPEC. V049-2-025, SECTION 10.



SECTION G
SCALE: 3/4"=1'-0" V049-5-040, SHT.1

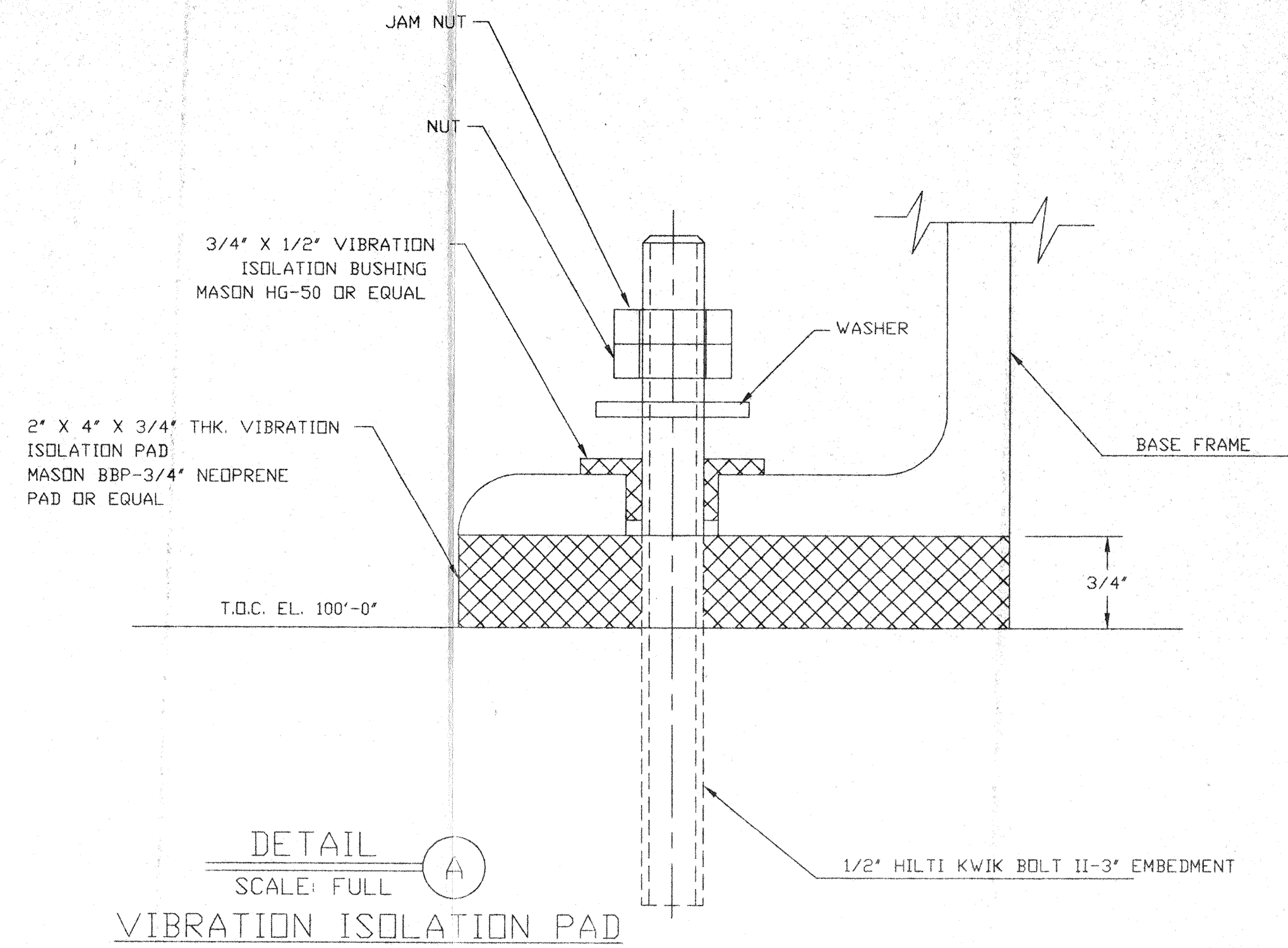
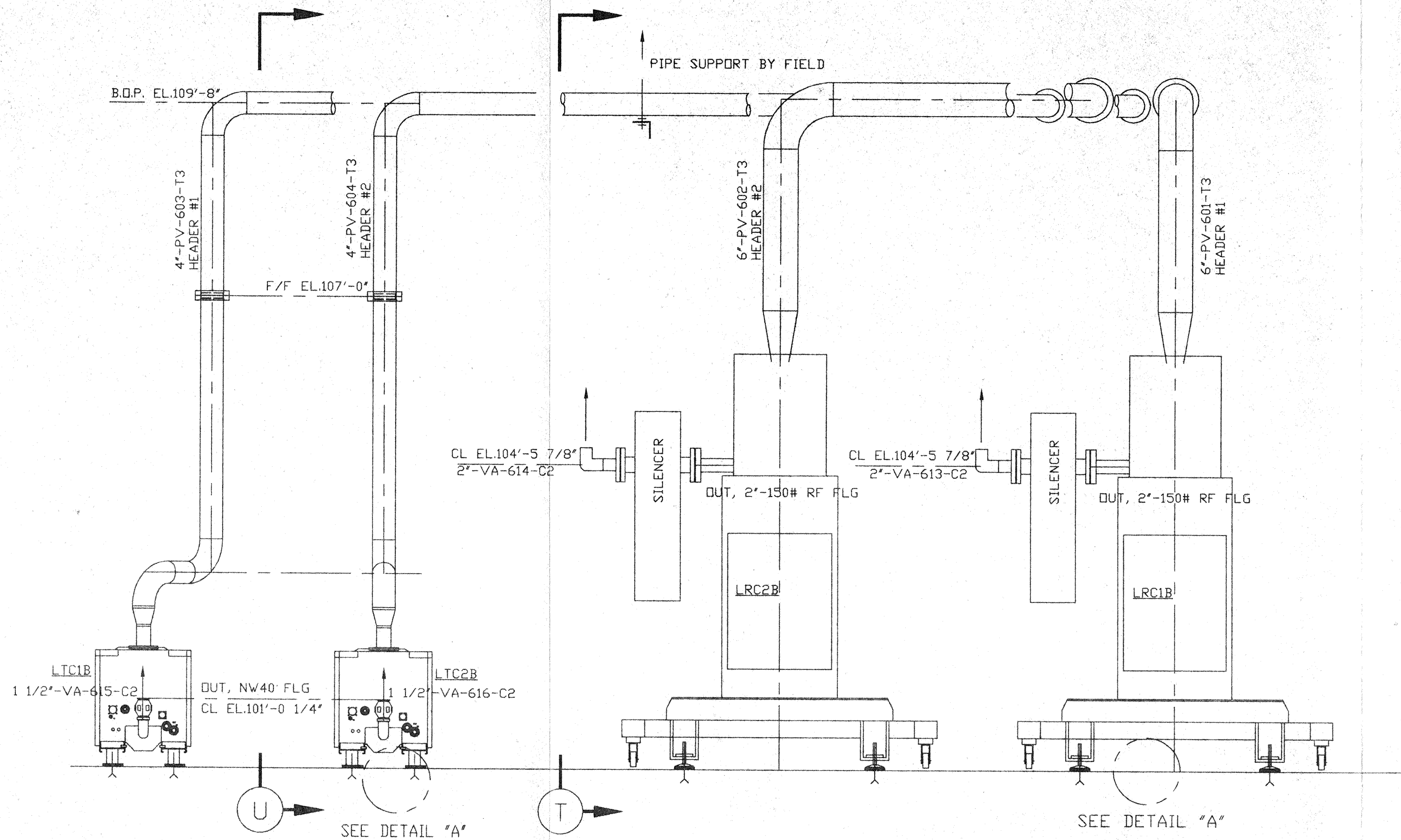


DETAIL 1
SCALE: 3"=1'-0" V049-5-040, SHT.2

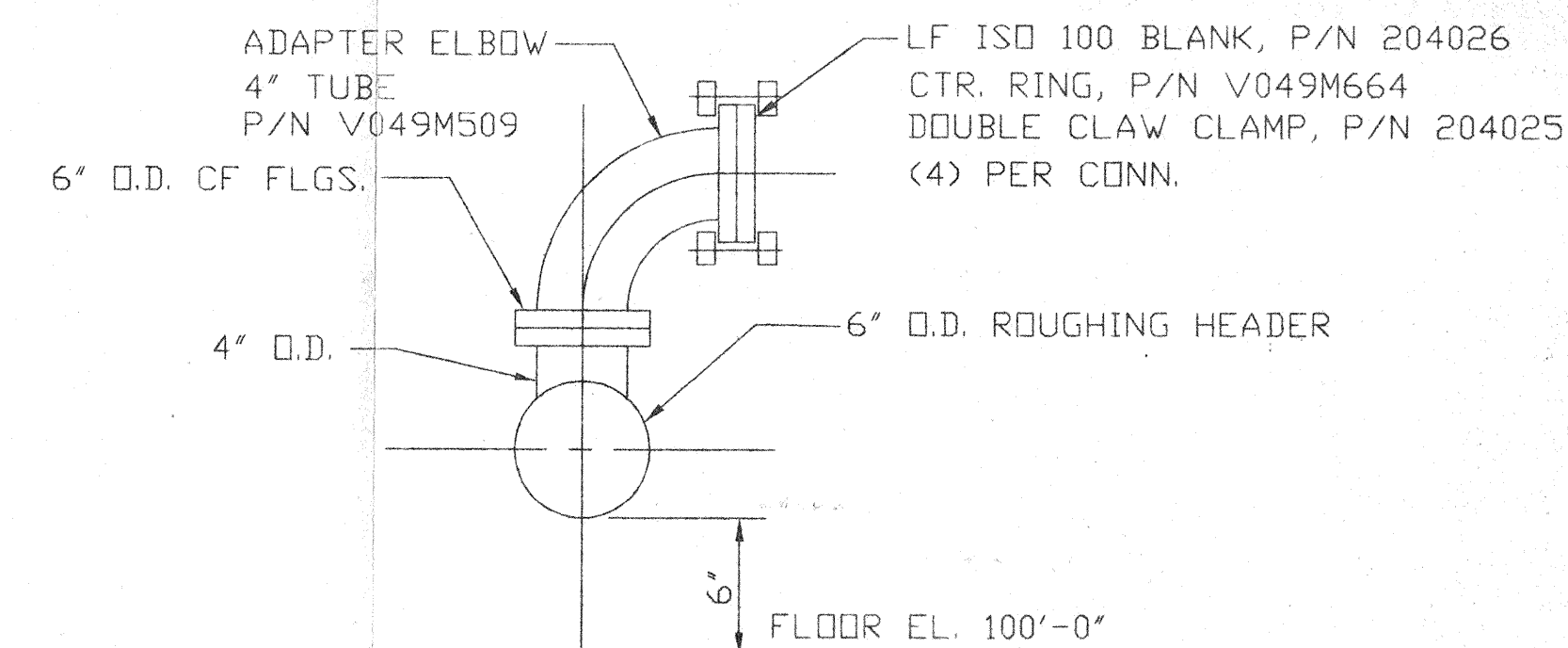
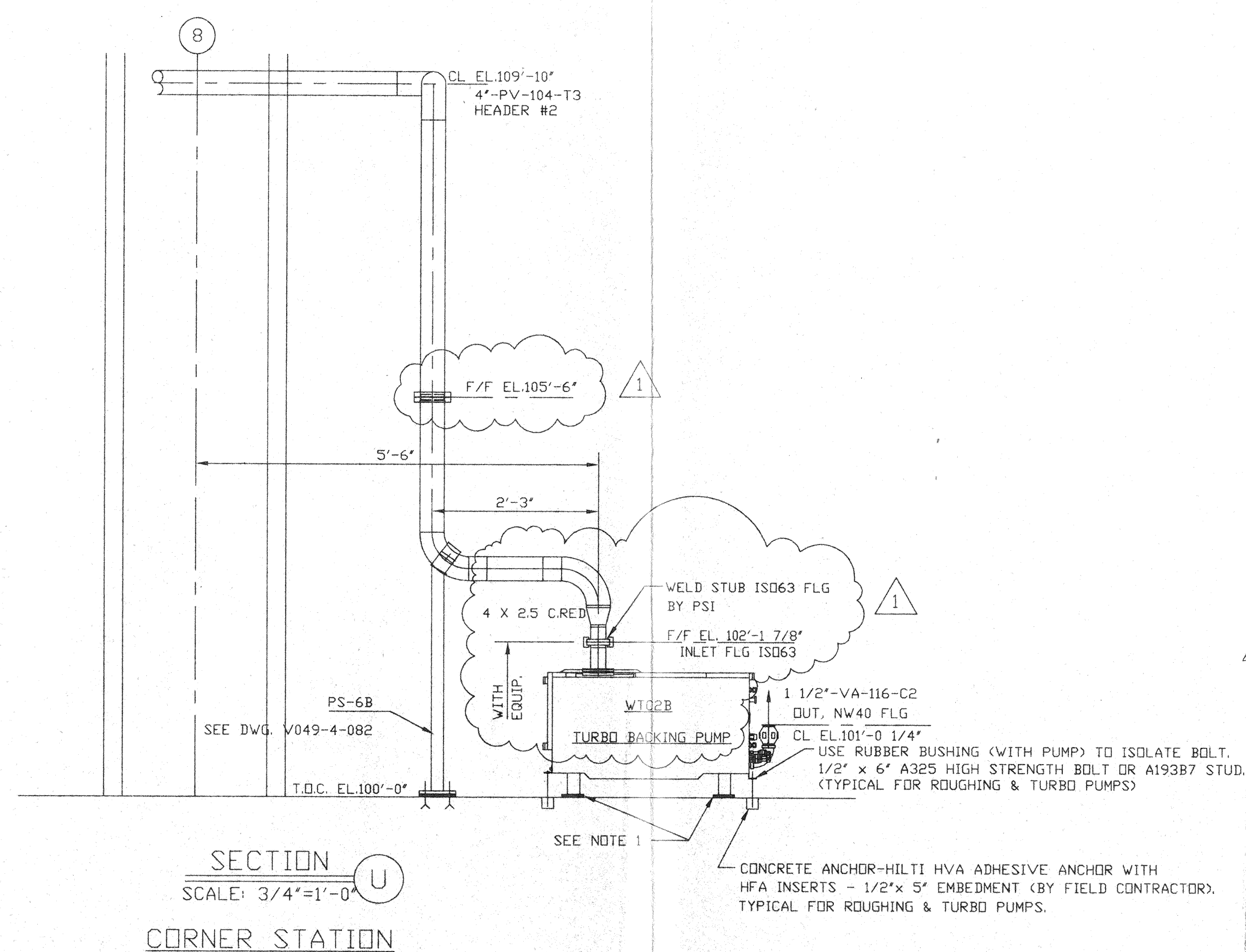
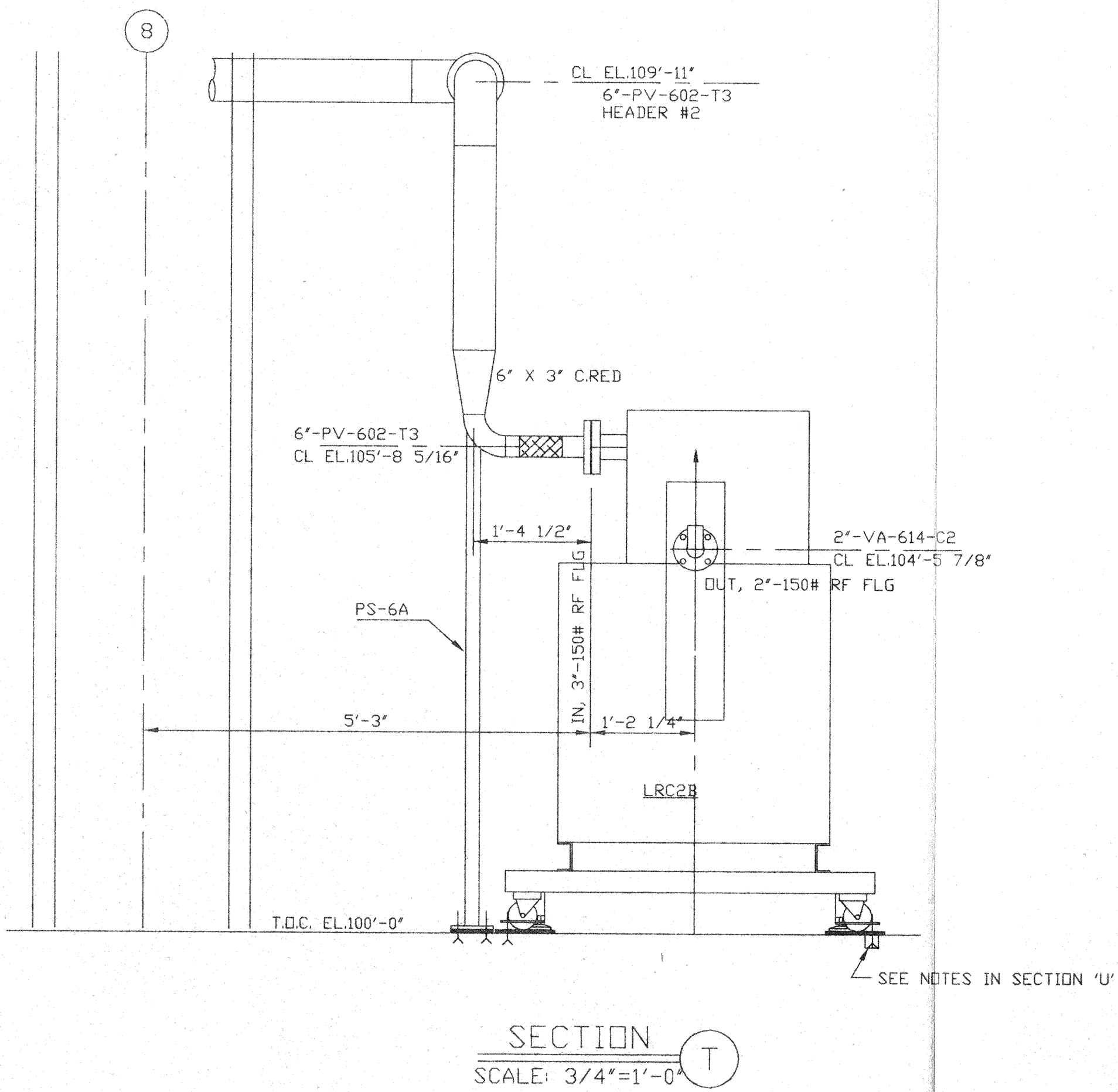
PROPRIETARY AND CONFIDENTIAL THIS DOCUMENT CONTAINS PROPRIETARY INFORMATION BELONGING TO PROCESS SYSTEMS INTERNATIONAL, INC. OR ITS AFFILIATED COMPANIES AND SHALL BE USED ONLY FOR THE PURPOSE FOR WHICH IT WAS SUPPLIED. IT SHALL NOT BE COPIED, REPRODUCED OR OTHERWISE USED, NOR SHALL SUCH INFORMATION BE FURNISHED IN WHOLE OR IN PART TO OTHERS EXCEPT IN ACCORDANCE WITH THE TERMS OF ANY AGREEMENT UNDER WHICH IT WAS SUPPLIED OR WITH THE PRIOR WRITTEN CONSENT OF PROCESS SYSTEMS INTERNATIONAL, INC. AND SHALL BE RETURNED UPON REQUEST.				UNLESS OTHERWISE SPECIFIED DIMENSIONS ARE IN INCHES TOLERANCES: FRACTIONAL ± ANGULAR/MACH ± BEND ± TWO PLACE DECIMAL ± THREE PLACE DECIMAL ± FINISHED SURFACE RMS BREAK CORNERS IN REMOVE ALL BURRS				1 ISSUED FOR CONSTRUCTION RDC REC DA 05/22/98 0577			
DWG. NO. DESCRIPTION REFERENCE DRAWINGS				DO NOT SCALE THIS DRAWING 0 ISSUED FOR FDR				SM DMW RDC REC RM R113.97 0406			
V049-5-040 PIPING ARRANGEMENT PLAN CORNER STATION V049-5-003 EQUIPMENT ARRANGEMENT CORNER STATION 1101101 LIGO VACUUM EQUIPMENT CORNER STATION				USED ON: REV DESCRIPTION				CHKD DRWN DATE DED#			
V049-5-040 PIPING ARRANGEMENT PLAN CORNER STATION				NEXT ASS'Y:				ISSUE DESCRIPTION			
SCALE: AS NOTED				SHEET 1 OF 3				MAY 22 1998 11:09:37			

MAY 22 1998

LIGO-D980249-01-V



NOTE: THIS TYPE OF VIBRATION PAD ASSEMBLY IS TO BE USED UNDER AIR COMPRESSOR SKID AND ELECTRICAL CABINETS. FOR 200 CFM AIR COMPRESSOR USE 6 BOLTED POINTS + 10 PADS WITHOUT BOLTS. USE 2" x 4" x 3/4" PADS, TYPICAL. CUT BOLT HOLES TO SUIT. ANCHOR BOLT METAL IS NOT TO BE IN CONTACT WITH BASE FRAME METAL. VIBRATION PADS & BUSHINGS & ANCHOR BOLTS BY FIELD CONTRACTOR.



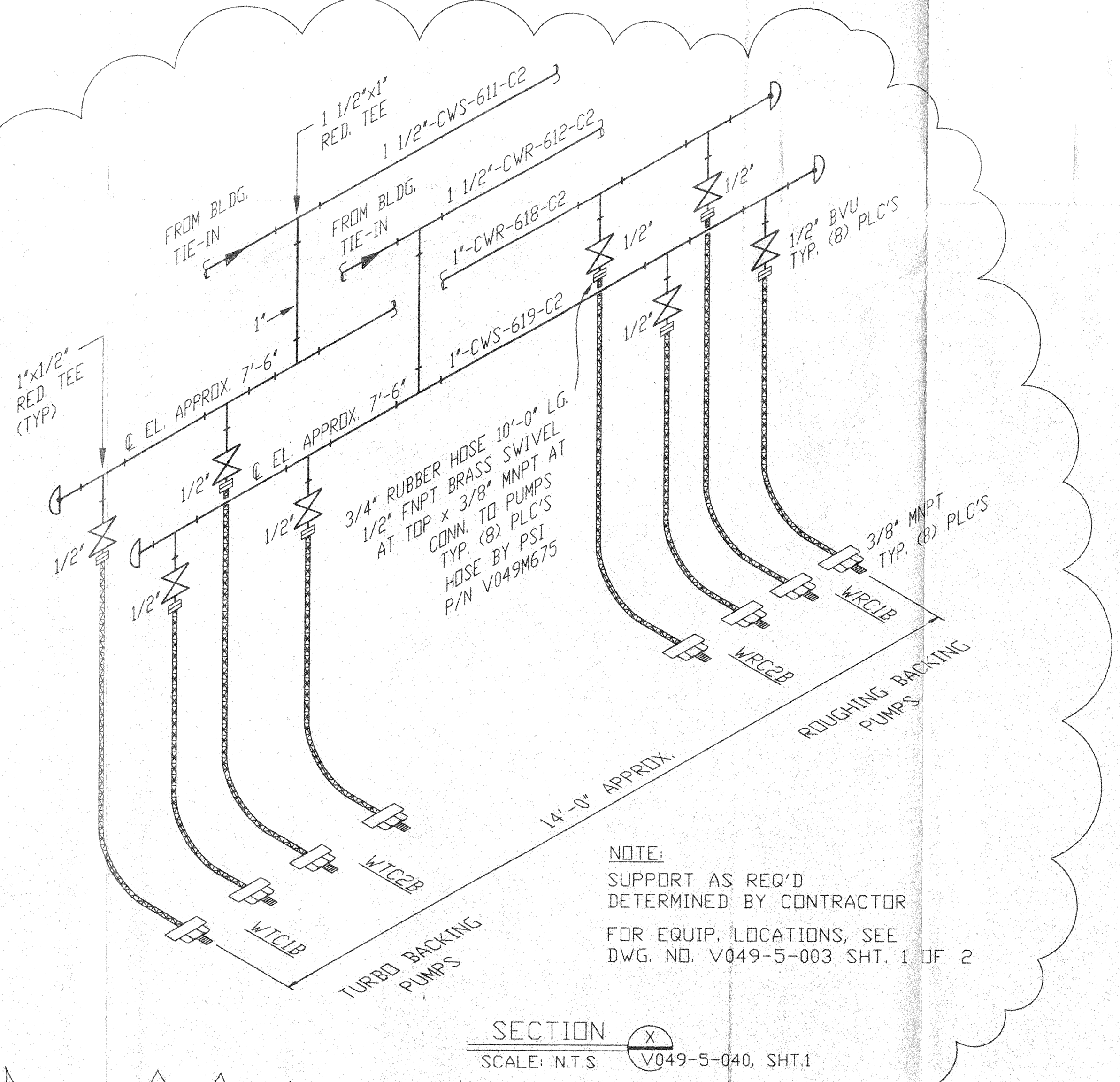
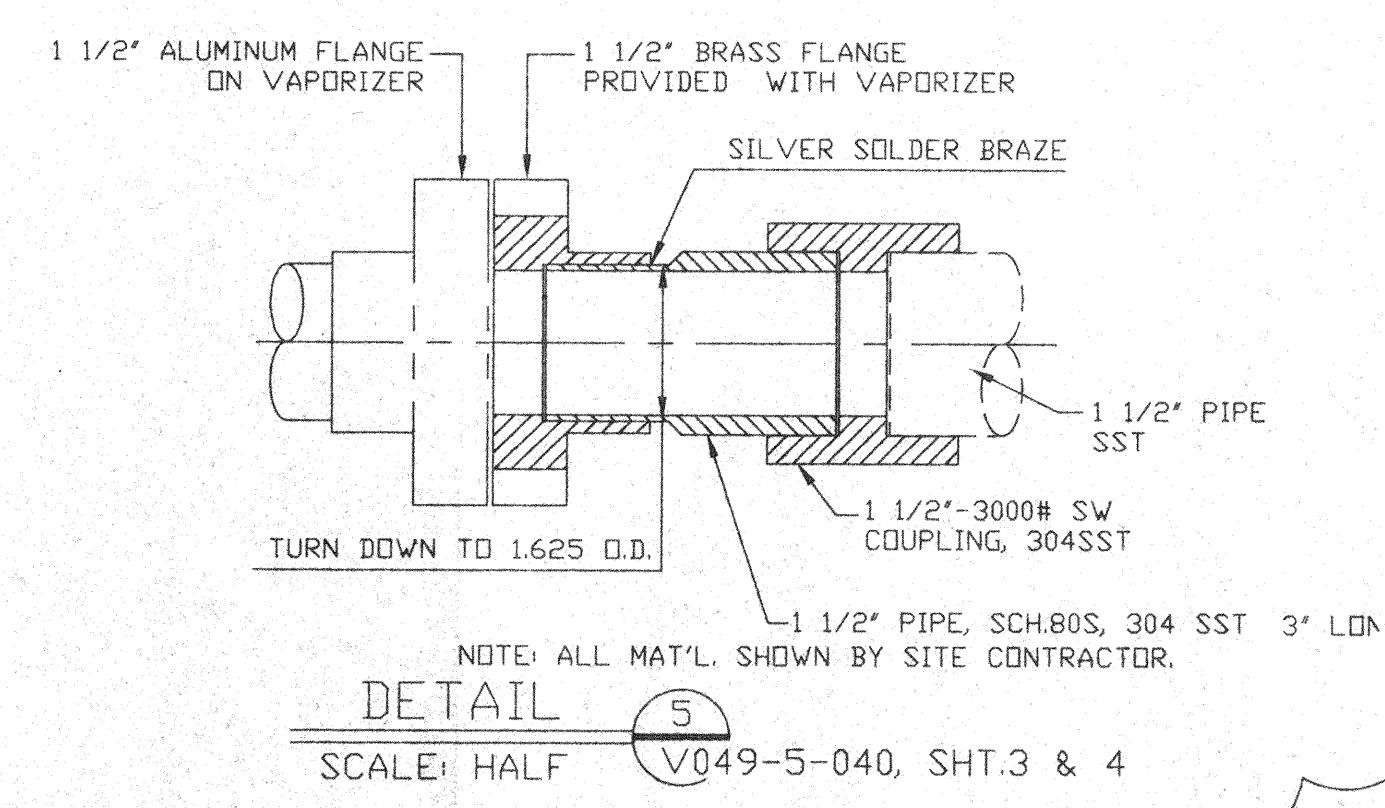
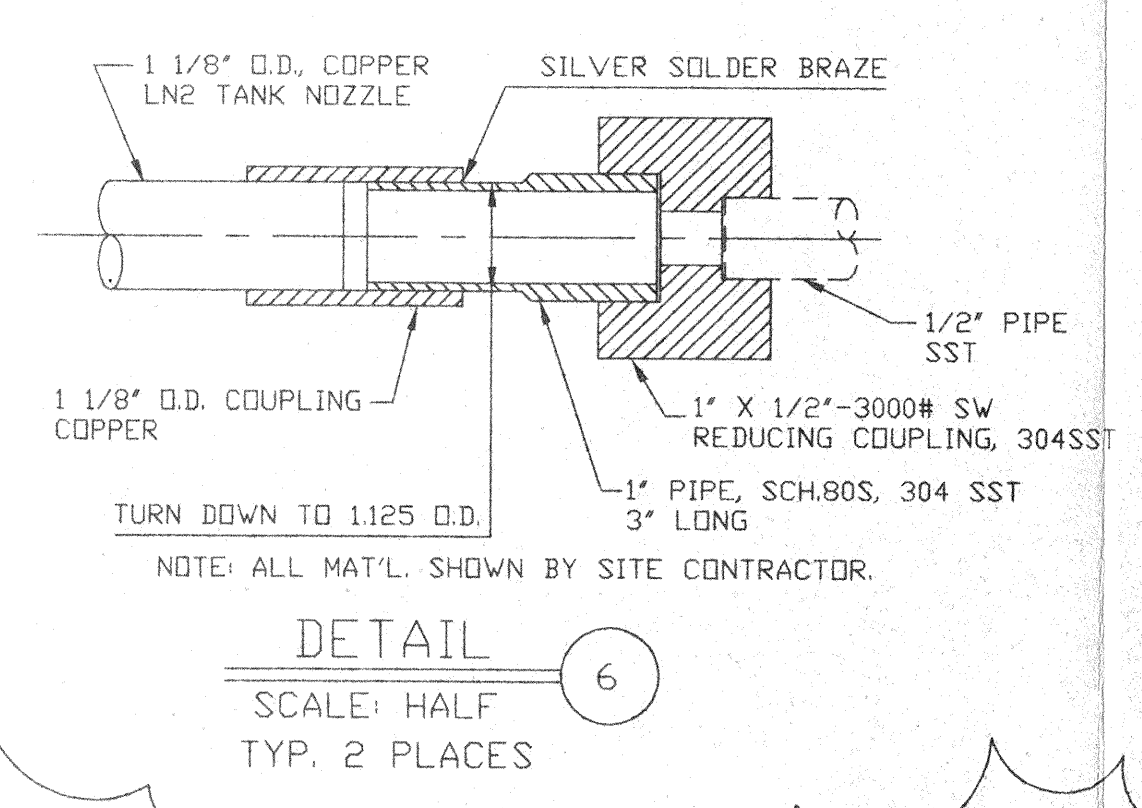
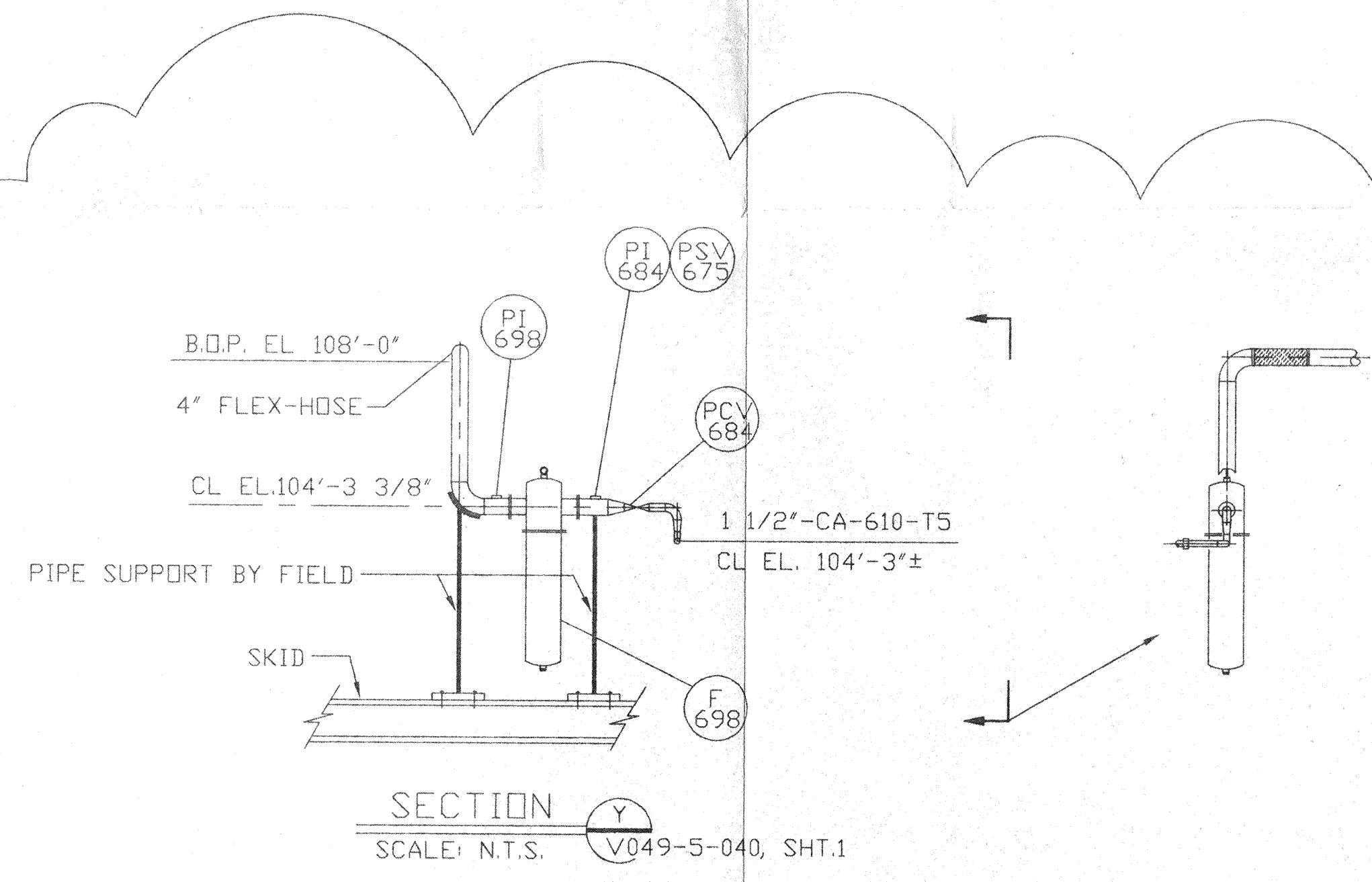
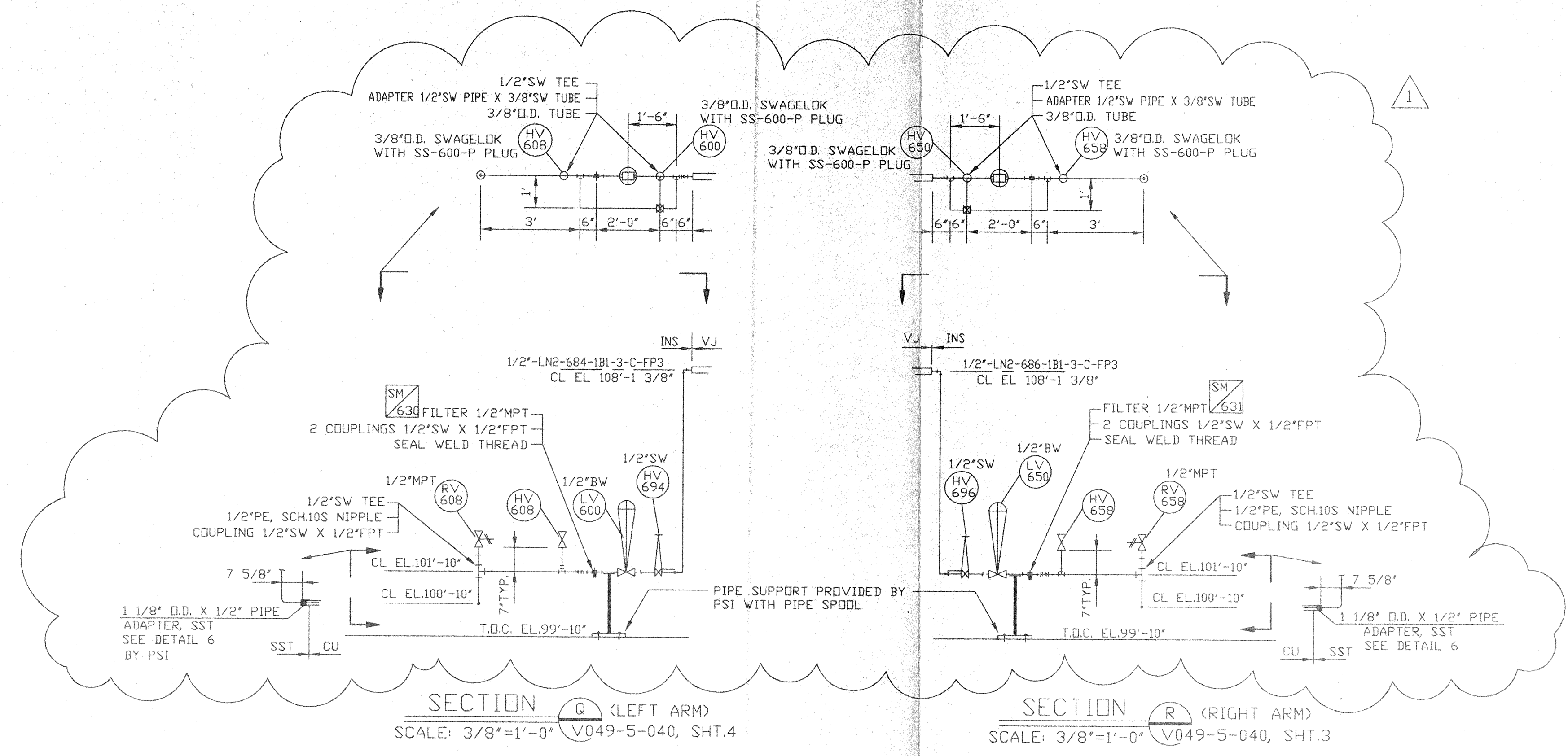
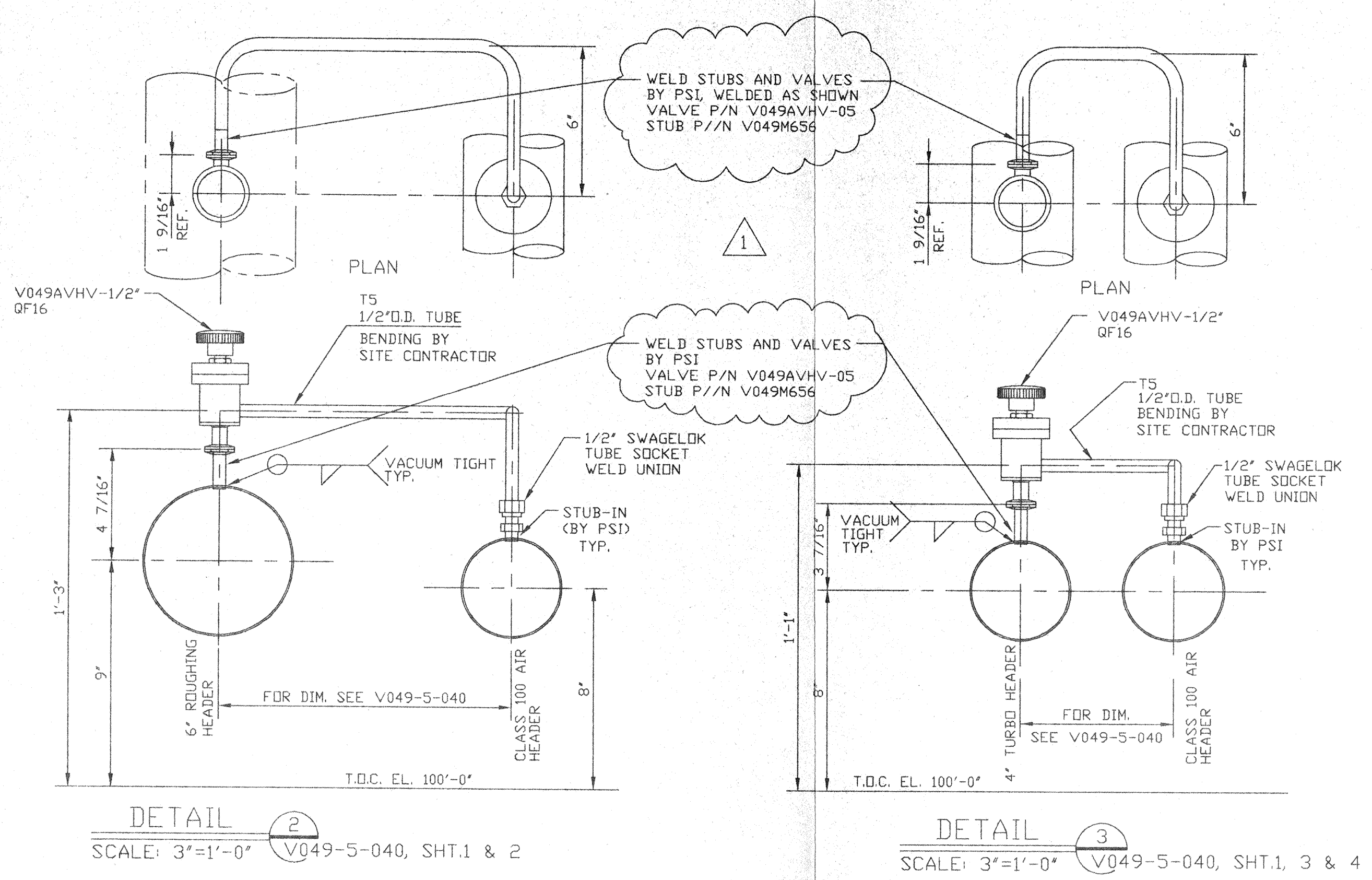
NOTE: ALL MATERIAL SHOWN BY PSI

NOTES

- ADJUST PUMP CART LEVELING LEGS TO RAISE CART WHEELS OFF THE FLOOR. THE LEGS ARE TO REST ON THE 1/2" THICK VIBRATION ISOLATION PADS. USE MASON TYPE "BBP" DURUMETER 50, UNDER LEGS. TYPICAL 4 LEGS PER CART.

MAY 28 1998

PROCESS SYSTEMS INTERNATIONAL INC. 20 WALKUP DR. WESTBOROUGH, MASSACHUSETTS 01581 USA			
PIPING ARRANGEMENT SECTION CORNER STATION LOUISIANA LIGO VACUUM EQUIPMENT			
CAD FILE V0495042/5042S2	SIZE D	DWG. NO. V049-5-042	REV. 1
SCALE AS NOTED	SHEET 2 OF 3		



MAY 28 1990

PROCESS SYSTEMS INTERNATIONAL INC. 20 WALKUP DR., WESTBOROUGH, MASSACHUSETTS 01581 USA			
PIPING ARRANGEMENT SECTIONS CORNER STATION LOUISIANA LIGD VACUUM EQUIPMENT			
CAD FILE	SIZE	DWG. NO.	REV.
V0495042/5042S3	D	V049-5-042	1
SCALE	SHEET	3 OF 3	
AS NOTED			

May 19, 1998 - 09:40:34