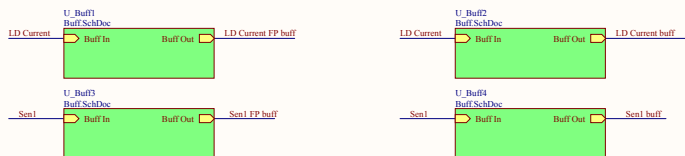
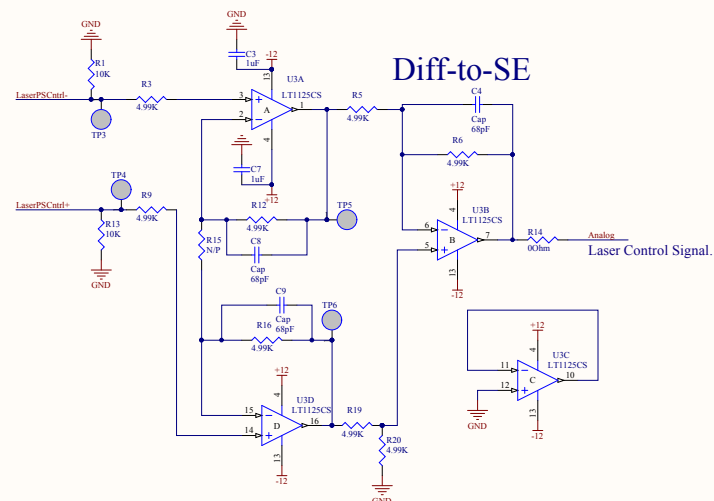


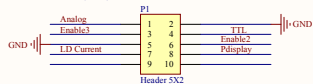
Signal Buffers



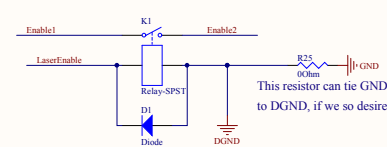
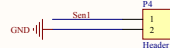
Diff-to-SE



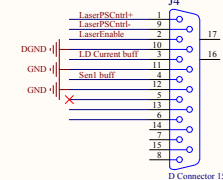
Power Supply Footprint is reversed
So their Pin 8 (LD 1) is our Pin 7, and their Pin 6 GND is our Pin 5.



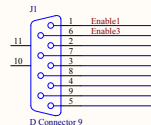
LD Temp Voltage from J3-pin6 taken from Sen1 Board.



Connector out to PCal Interface

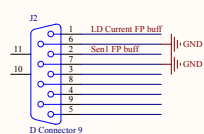


To access Control

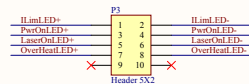


Enable signals from access controller
that will be daisy-chained with the
Laser Enable command, and the Laser Input pins

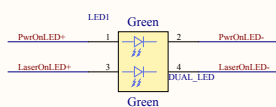
Front Panel Monitor Connector



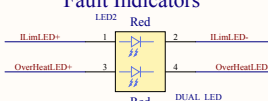
Header connector to bare wires to
soldered into the PS board.



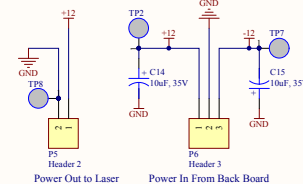
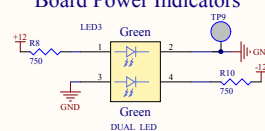
Front Panel Laser Power Indicators



Front Panel Fault Indicators



Front Panel Board Power Indicators



Title **PCal Laser Distribution Board**

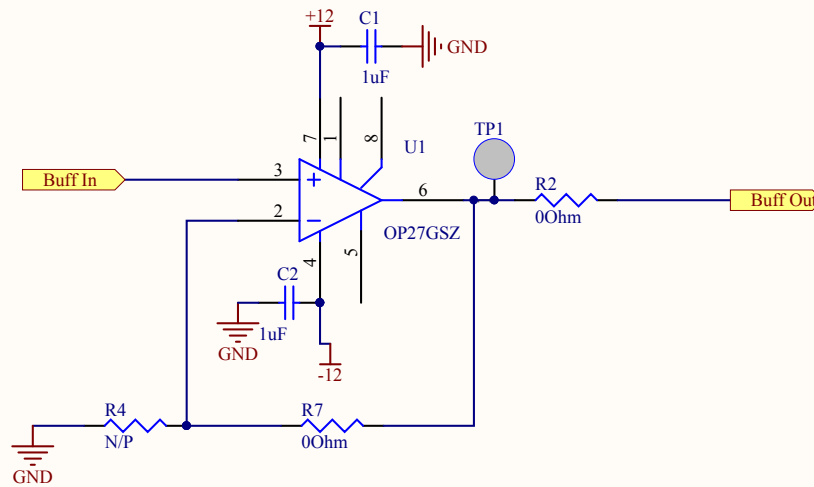
Size: C DCC Number: D1400033

Drawn by: + Date: 2/12/2014 Revision: v1

Title: C:\restored\Bos\AOS\PCal\Shuff\Powerand\AOM\Chassis\ LaserDistri... 1 of 1

Ligo Project
California Institute of Technology
Massachusetts Institute of Technology





Title		
Size	Number	Revision
A		
Date:	2/12/2014	Sheet of
File:	C:\restored\...\Buff.SchDoc	Drawn By:

