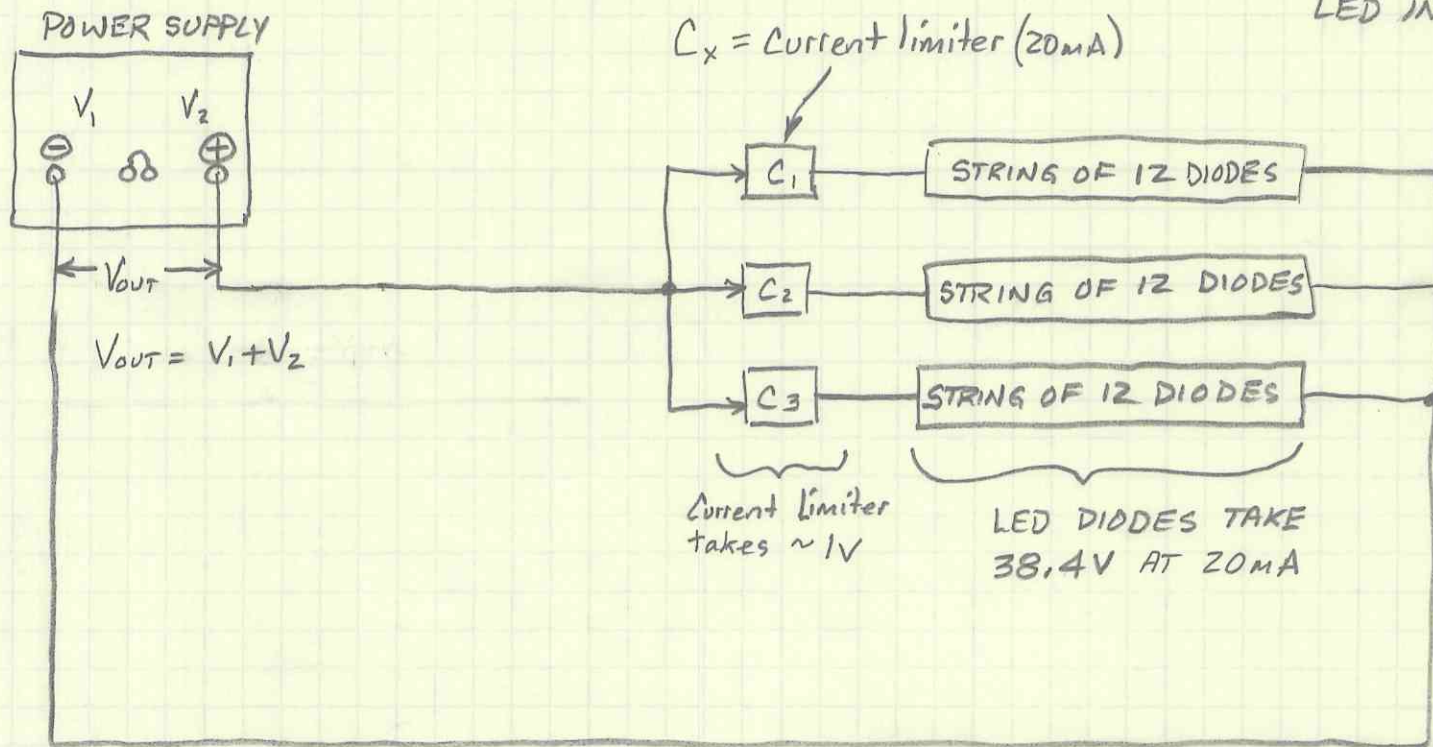


17 MARCH 2016 R. ABBOTT
LED INFO FROM BEN



Once current limit (20mA) is reached, the LEDs won't get brighter when the power supply voltage is further increased. The voltage threshold for maximum brightness will be:

$$V_{OUT} = V_{MAX} = \overset{(C_x)}{1V} + \overset{(V_{LED@20mA})}{38.4V} = 39.4V \sim \boxed{40V} \text{ or } V_1 = 10V \neq V_2 = 30V$$