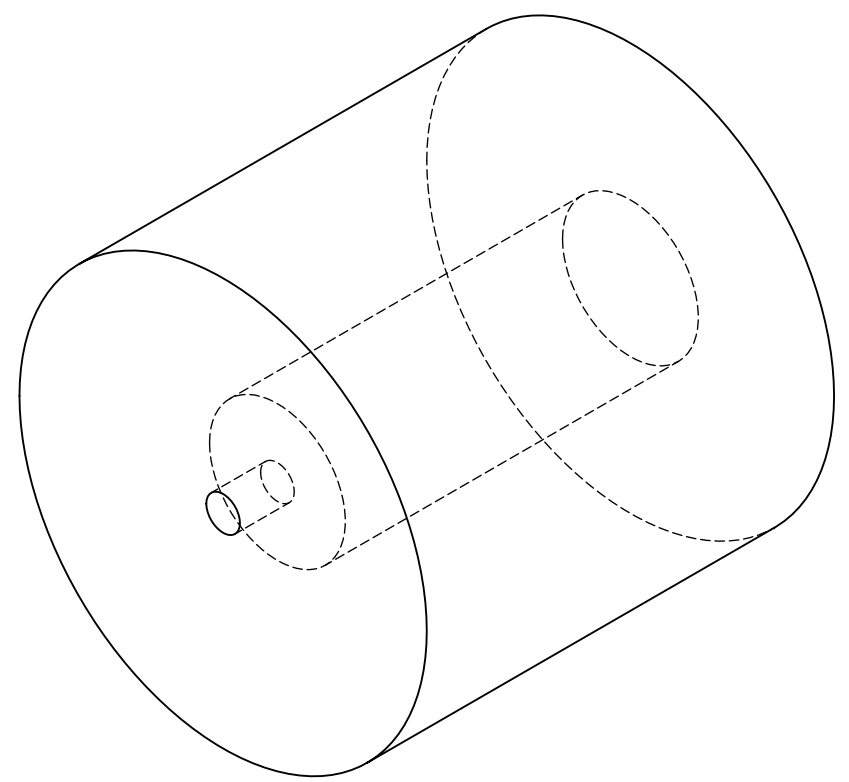
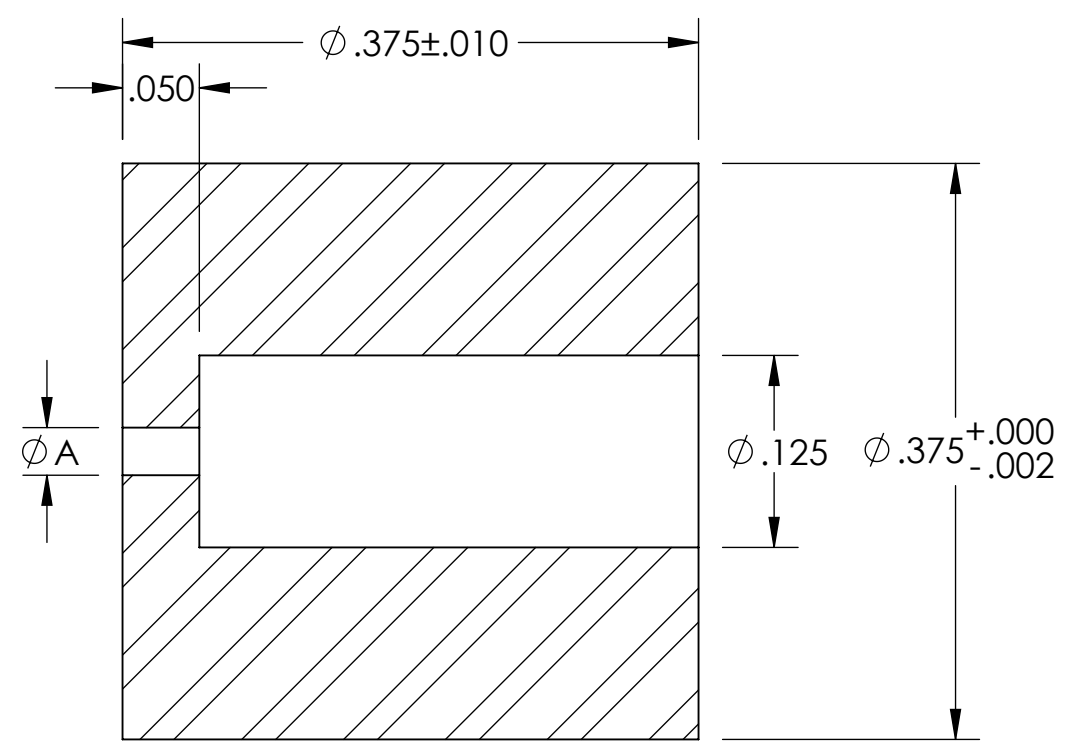
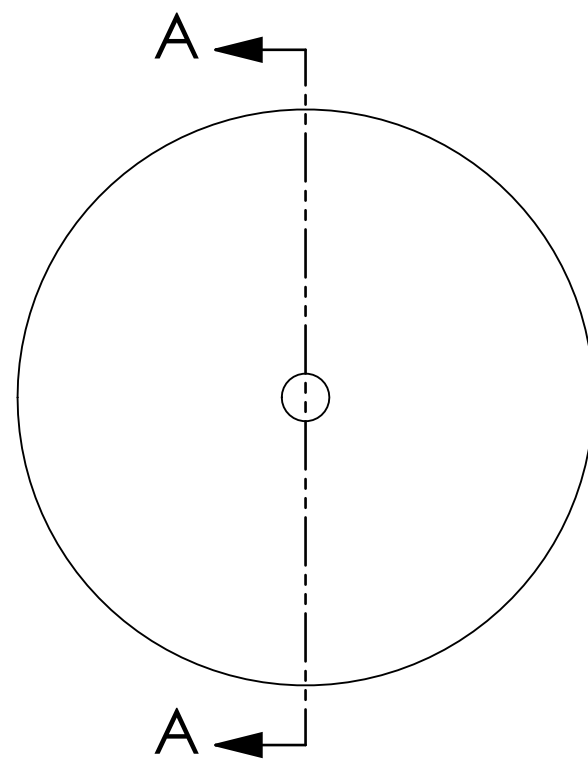


NOTES (CONTINUED):

4. BAG AND TAG EACH TYPE IN SEPARATE LOTS. TAG WITH DRAWING NUMBER, REVISION, TYPE (DASH) NUMBER, QUANTITY, AND LOT SERIAL NUMBER. LOT SERIAL NUMBERS (FOR EACH TYPE) START AT 001 AND PROCEED CONSECUTIVELY. EXAMPLE (TAG): D1300986-V1, TYPE -02, QTY: 10, LOT S/N 001.
5. MASS: 0.011 LB [4.9 G].
6. MACHINE ALL SURFACES TO REMOVE OXIDES AND MILL FINISH.

REV.	DATE	DCN #	BOM #
v1	07 NOV 2013	-	-
v2	08 NOV 2013	-	-



SECTION A-A

TYPE	ϕA
-01	.031
-02	.063
-03	.094

NOTES AND TOLERANCES: (UNLESS OTHERWISE SPECIFIED)

DIMENSIONS ARE IN INCHES
 TOLERANCES:
 .XX $\pm .01$
 .XXX $\pm .005$
 ANGULAR $\pm 1.0^\circ$

1. INTERPRET DRAWING PER ASME Y14.5-1994.
 2. REMOVE ALL SHARP EDGES, .005-.015.
 3. DO NOT SCALE FROM DRAWING.

MATERIAL: 304 SSSL
 FINISH: 63 μ inch Ra MAX

LIGO CALIFORNIA INSTITUTE OF TECHNOLOGY
 MASSACHUSETTS INSTITUTE OF TECHNOLOGY

SYSTEM: ADVANCED LIGO
 SUB-SYSTEM: PSL
 NEXT ASSY: D1101059

PART NAME: aLIGO PSL ISS PD ARRAY ALIGNMENT APERTURE

DESIGNER: R. SAVAGE	DATE: 07 NOV 2013	SIZE: B	DWG. NO.: D1300986	REV.: v2
DRAFTER: C. CONLEY	DATE: 07 NOV 2013			
CHECKER:				
APPROVAL:				

SCALE: NONE PROJECTION: SHEET 1 OF 1