

**NOTES CONTINUED:**

④ SCRIBE, ENGRAVE (A VIBRATORY TOOL MAY BE USED), LASER MARK OR MECHANICALLY STAMP (NO INKS OR DYES) DRAWING PART NUMBER, REVISION, DASH OR 'TYPE' NUMBER, AND A THREE DIGIT SERIAL NUMBER. SERIAL NUMBERS START AT 001 FOR THE FIRST ARTICLE AND PROCEED CONSECUTIVELY. USE MINIMUM 0.12" HIGH CHARACTERS. EXAMPLE: D1300684-v3, TYPE -01, S/N 001

D 5. WEIGHT: 1.73 LB.

6. ALL THROUGH FEATURES MAY BE WATER JET CUT IF PROCESS CAN HOLD TOLERANCES.

⑦ CONFIGURATIONS

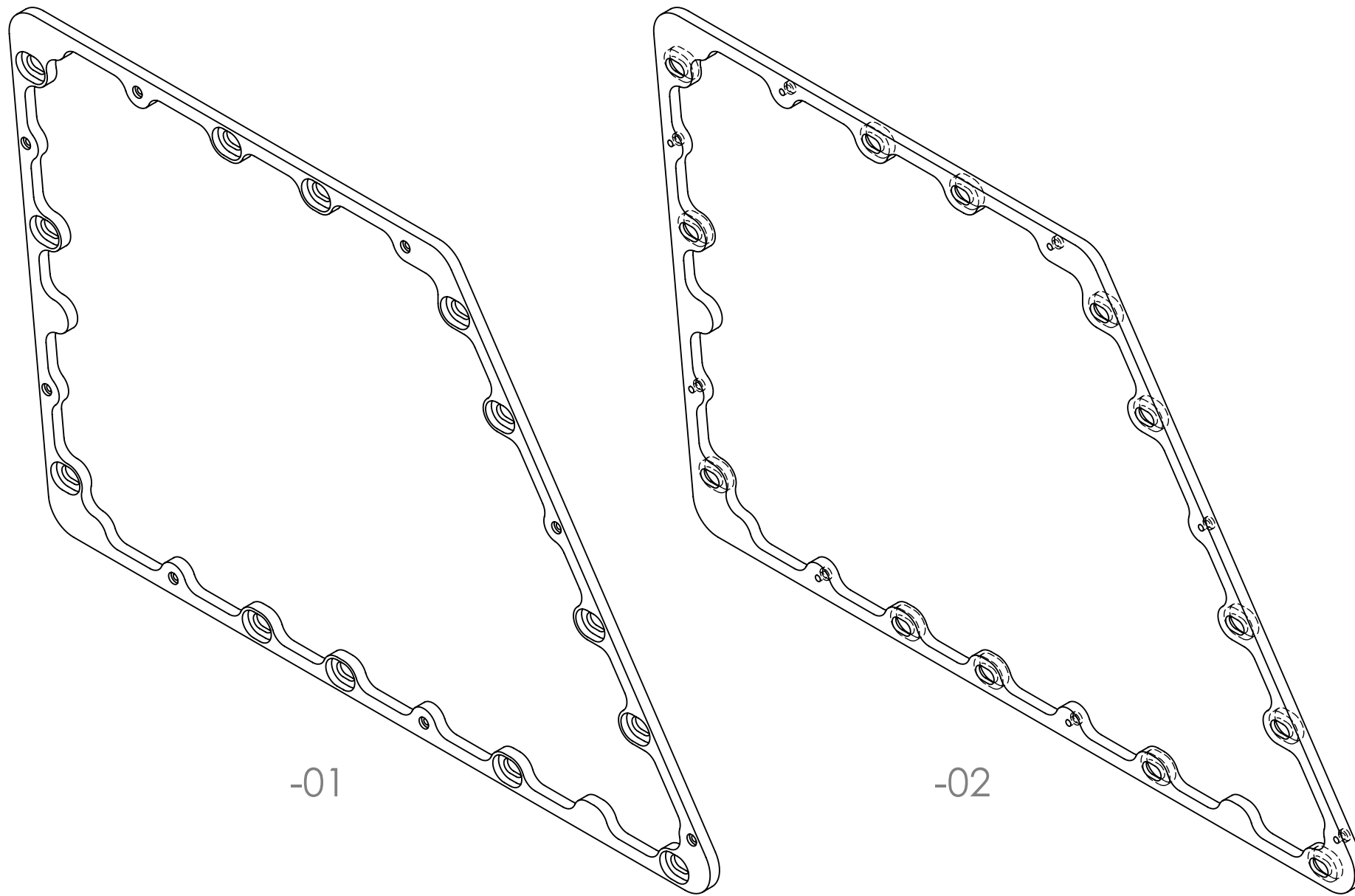
- 01: AS SHOWN DETAILED
- 02: MACHINE  $\nabla$ .23 SLOT RECESSES OPPOSITE SIDE  
MACHINE  $\square$   $\phi$ .375 X  $\nabla$ .100 OPPOSITE SIDE  
SEE SHEET 2

⑧ TUMBLE DEBURR OK.

⑨ BLACK ANODIZE PER MIL-A-8625F, TYPE II, CLASS 2.

10. USAGE

- 01: USE ON D1001330-02 (END-X)
- 02: USE ON D1001325-02 (END-Y)



REV.	DATE	DCN #	DRAWING TREE #
v1	23 AUG 2013	-	-
v2	03 SEP 2013	-	-
v3	09 SEP 2013	E1300649-x0	-

D1300684 qLIGO Pcal Receiver Enclosure Adapter, Inside, PART PDM REV: X-010, DRAWING PDM REV: X-003

C  
B  
A

D  
C  
B  
A

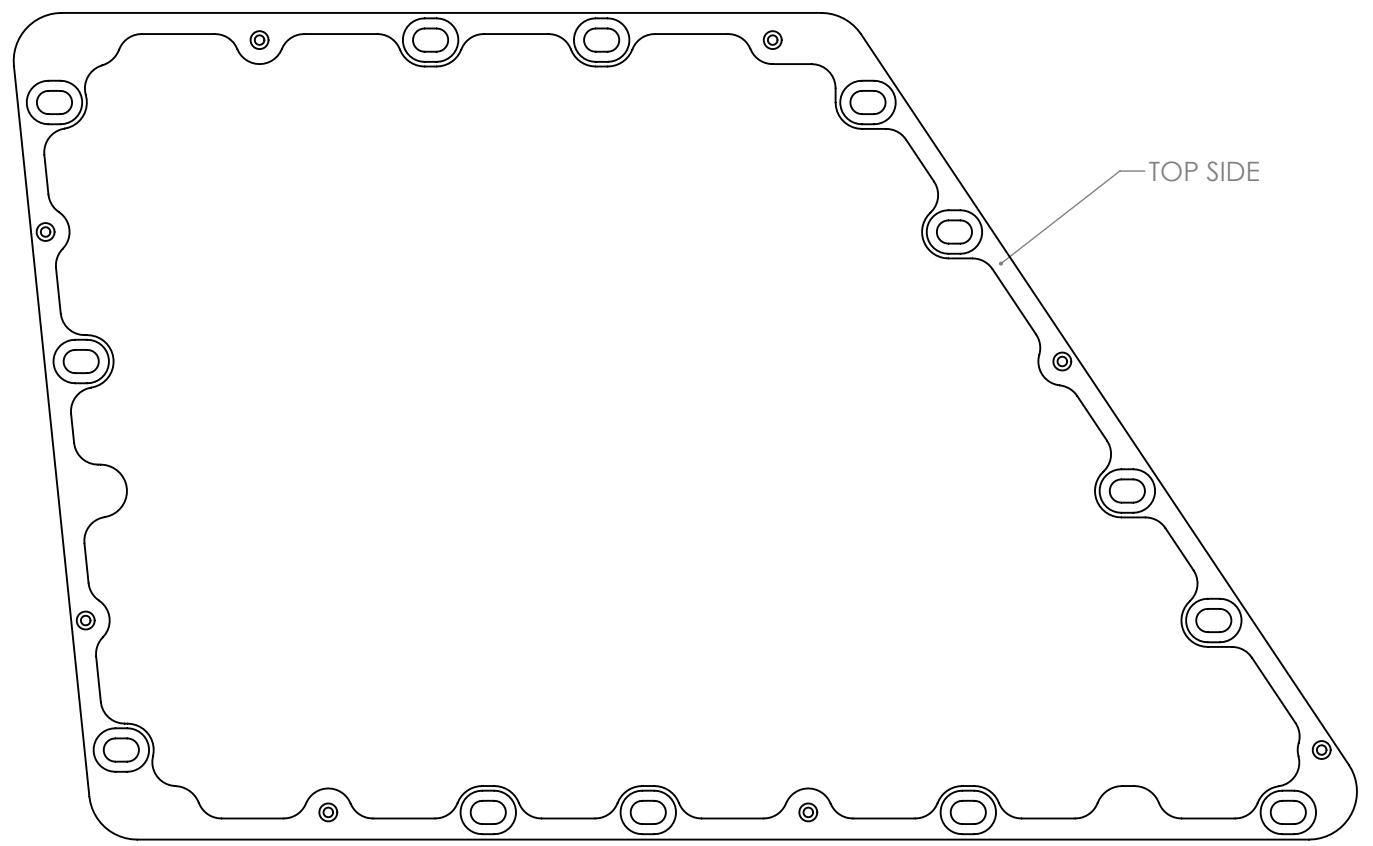
<b>NOTES AND TOLERANCES: (UNLESS OTHERWISE SPECIFIED)</b>				CALIFORNIA INSTITUTE OF TECHNOLOGY MASSACHUSETTS INSTITUTE OF TECHNOLOGY		PART NAME <b>qLIGO PCAL RECEIVER ENCLOSURE ADAPTER, INSIDE</b>	
DIMENSIONS ARE IN INCHES  TOLERANCES: .XX ± .02 .XXX ± .005  ANGULAR ± 0.1°				1. INTERPRET DRAWING PER ASME Y14.5-1994. 2. REMOVE ALL SHARP EDGES, .005-.015, FOR MACHINED PARTS. ROUND ALL EDGES APPROXIMATELY R.02 FOR SHEET METAL PARTS. 3. DO NOT SCALE FROM DRAWING. 4. ALL MACHINING FLUIDS MUST BE FULLY SYNTHETIC, FULLY WATER SOLUBLE AND FREE OF SULFUR, SILICONE, AND CHLORINE.		DESIGNER R. SAVAGE DRAFTER C. CONLEY CHECKER APPROVAL	
MATERIAL 6061-T6 Al		FINISH N/A $\mu$ inch		SYSTEM ADVANCED LIGO		SUB-SYSTEM AOS	
NEXT ASSY D1001325 D1001330				DATE 12 AUG 2013		SIZE DWG. NO. <b>B D1300684</b>	
				REV. v3		SCALE: 1:4 PROJECTION:	
						SHEET 1 OF 4	

D1300684 aLIGO Pcal Receiver Enclosure Adapter, Inside, PART PDM REV: X-010, DRAWING PDM REV: X-003

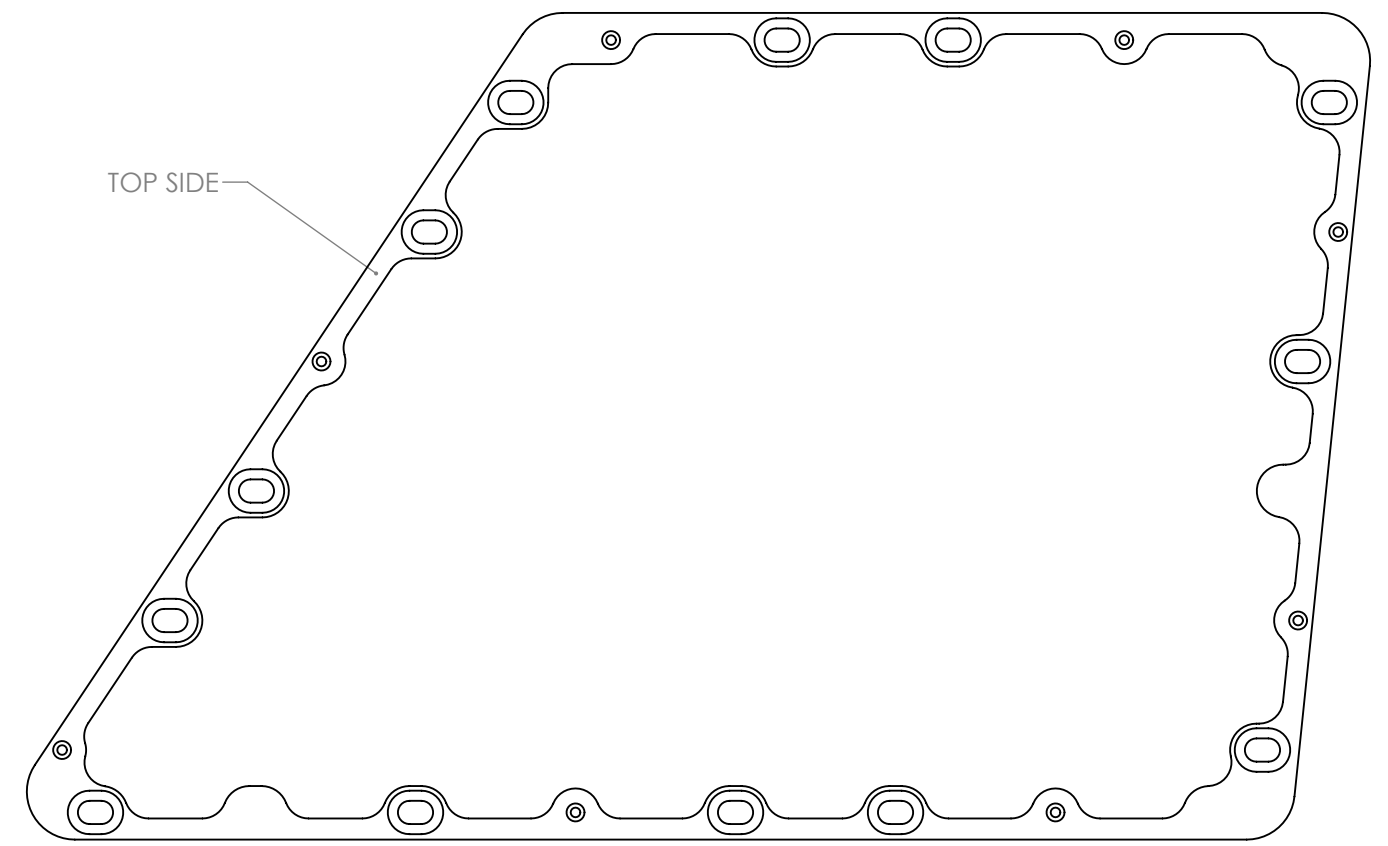
8 7 6 5 4 3 2 1

D  
C  
B  
A

D  
C  
B  
A



-01

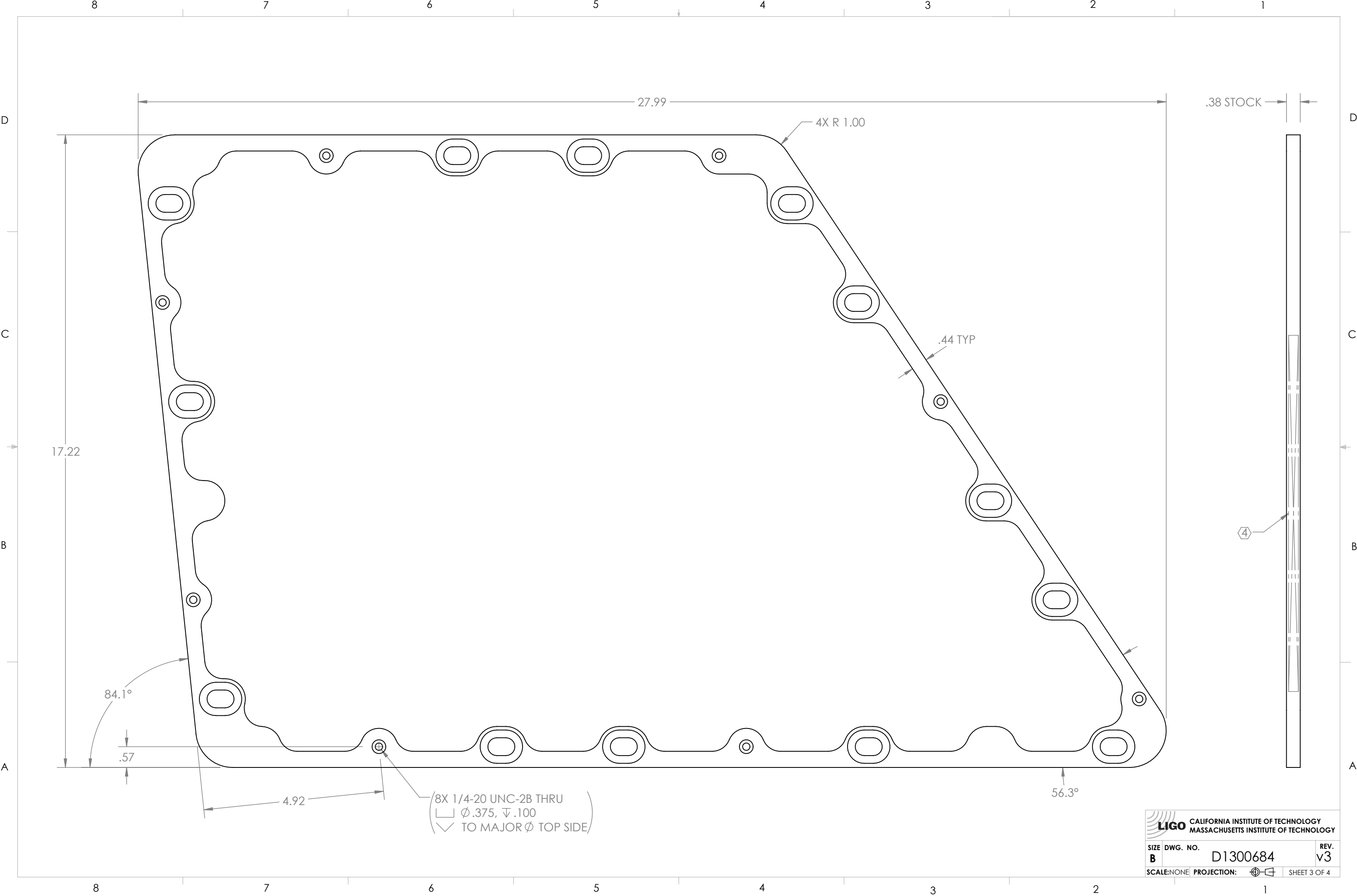


-02

 CALIFORNIA INSTITUTE OF TECHNOLOGY MASSACHUSETTS INSTITUTE OF TECHNOLOGY		
SIZE <b>B</b>	DWG. NO. D1300684	REV. v3
SCALE: NONE	PROJECTION: 	SHEET 2 OF 4

8 7 6 5 4 3 2 1

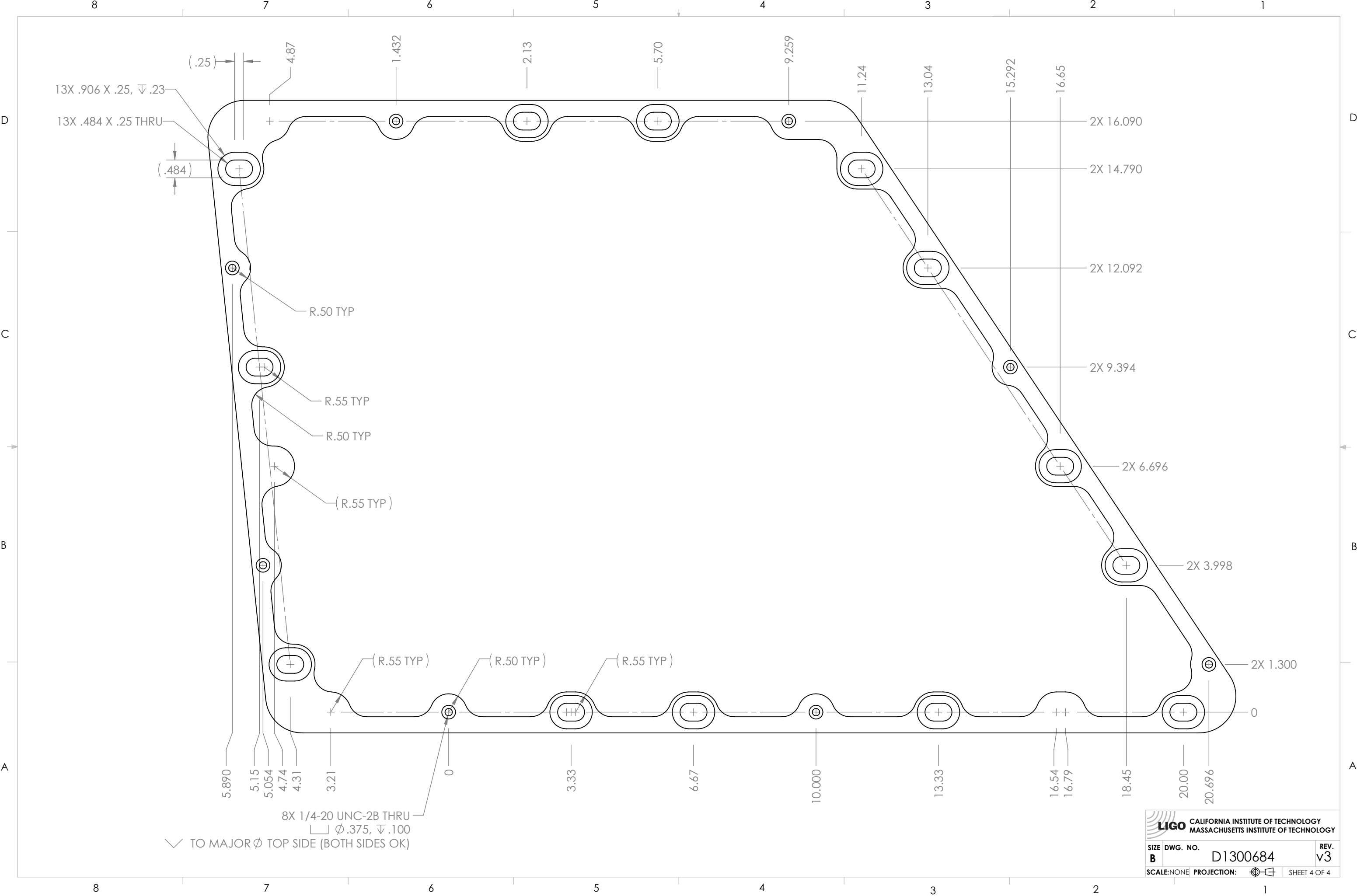
D1300684 aLIGO Pcal Receiver Enclosure Adapter, Inside, PART PDM REV: X-010, DRAWING PDM REV: X-003



**LIGO** CALIFORNIA INSTITUTE OF TECHNOLOGY  
 MASSACHUSETTS INSTITUTE OF TECHNOLOGY

SIZE	DWG. NO.	REV.
B	D1300684	v3
SCALE: NONE	PROJECTION:	SHEET 3 OF 4

D1300684 aLIGO Pcal Receiver Enclosure Adapter, Inside, PART PDM REV: X-010, DRAWING PDM REV: X-003



**LIGO** CALIFORNIA INSTITUTE OF TECHNOLOGY  
 MASSACHUSETTS INSTITUTE OF TECHNOLOGY

SIZE	DWG. NO.	REV.
B	D1300684	v3
SCALE: NONE	PROJECTION:	SHEET 4 OF 4