

8

7

6

5

4

3

2

1

NOTES CONTINUED:

- 5. SCRIBE, ENGRAVE, OR MECHANICALLY STAMP (NO DYES OR INKS) A UNIQUE THREE DIGIT SERIAL NUMBER & REVISION NUMBER ON EACH PART. SERIAL NUMBERS START AT 001 FOR THE FIRST ARTICLE AND PROCEED CONSECUTIVELY. BAG AND TAG PARTS WITH THEIR DRAWING PART NUMBER, REVISION, VARIANT OR "TYPE" (IF APPLICABLE), AND QUANTITY. IF PARTS ARE TOO SMALL TO SCRIBE, BAGGING AND TAGGING ALONE IS SUFFICIENT.
EXAMPLE (PART): 001-v1
EXAMPLE (TAG): DXXXXXX-VY, TYPE-XX, QTY: TBD
- 6. APPROXIMATE WEIGHT = X.XXX LB.
- 7. MACHINE ALL SURFACES TO REMOVE OXIDES AND MILL FINISH. USE OF ABRASIVE REMOVAL TECHNIQUES IS NOT ALLOWED.
- 8. ALL PARTS SHALL BE MANUFACTURED IN ACCORDANCE WITH LIGO SPECIFICATION E0900364.

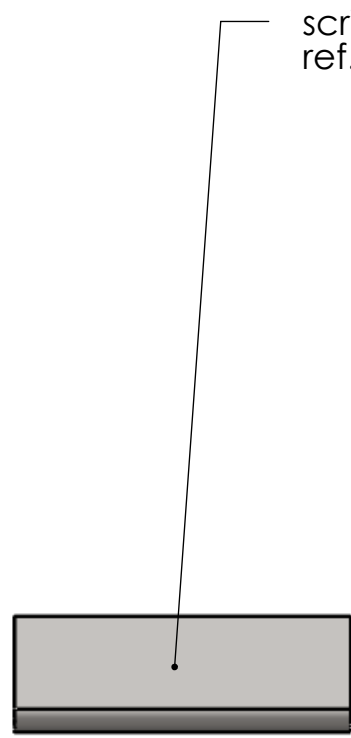
REV.	DATE	DCN #	DRAWING TREE #
v1	7-3-13	to follow	E1200793
-	-	-	-
-	-	-	-

D

C

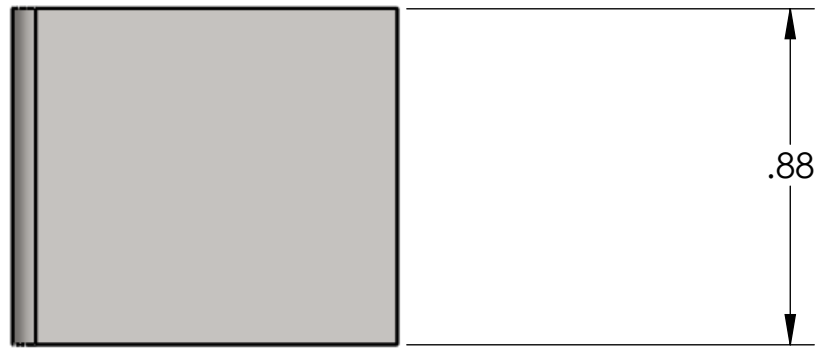
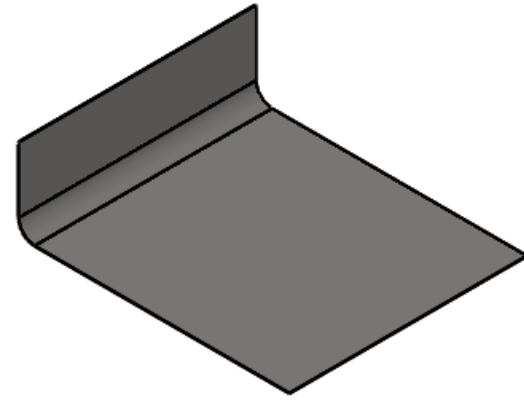
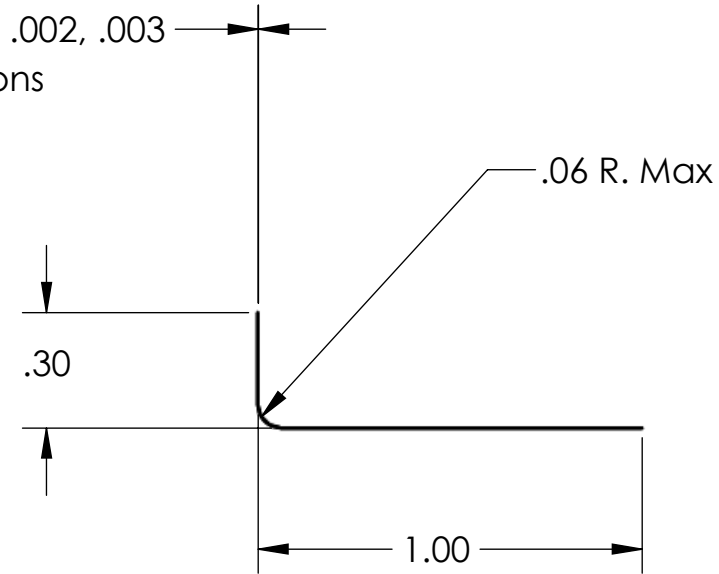
B

A



scribe the thickness here
ref. .0005 or .003 etc.

.0005, .001, .0015, .002, .003
Thickness Selections



D

C

B

A

D1300653 aLIGO Primary Mirror Mount Shim, PART PDM REV: X-001, DRAWING PDM REV: X-000

NOTES AND TOLERANCES: (UNLESS OTHERWISE SPECIFIED)				LIGO		CALIFORNIA INSTITUTE OF TECHNOLOGY MASSACHUSETTS INSTITUTE OF TECHNOLOGY		PART NAME									
DIMENSIONS ARE IN INCHES TOLERANCES: .XX ± .03 .XXX ± ANGULAR ± °				1. INTERPRET DRAWING PER ASME Y14.5-1994. 2. REMOVE ALL SHARP EDGES, R.02 MIN. 3. DO NOT SCALE FROM DRAWING. 4. ALL MACHINING FLUIDS MUST BE FULLY SYNTHETIC, FULLY WATER SOLUBLE AND FREE OF SULFUR, SILICONE, AND CHLORINE.				SYSTEM ADVANCED LIGO		SUB-SYSTEM AOS		DESIGNER k mailand 7-23-13		SIZE DWG. NO. B		REV. v1	
								MATERIAL AISI 304		FINISH N/A μinch		NEXT ASSY D1002460		DRAFTER k mailand 7-23-13		CHECKER	
										aLIGO Primary Mirror Shim D1300653							

8

7

6

5

4

3

2

1