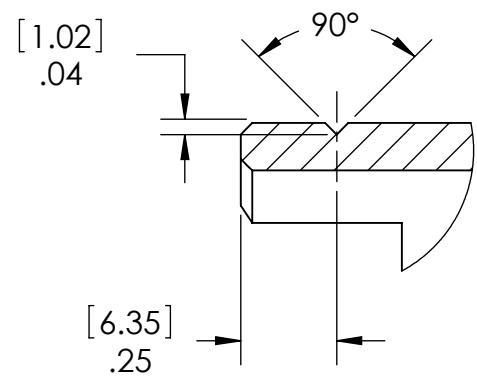


D1300544 KAGRA, OVERSIZE LOCATING SLEEVE, 220mm OPTIC CONTAINER, PART PDM REV: X-001, DRAWING PDM REV: X-001

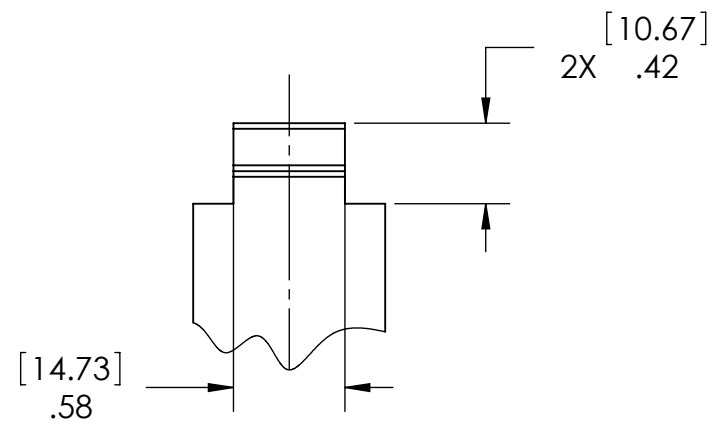
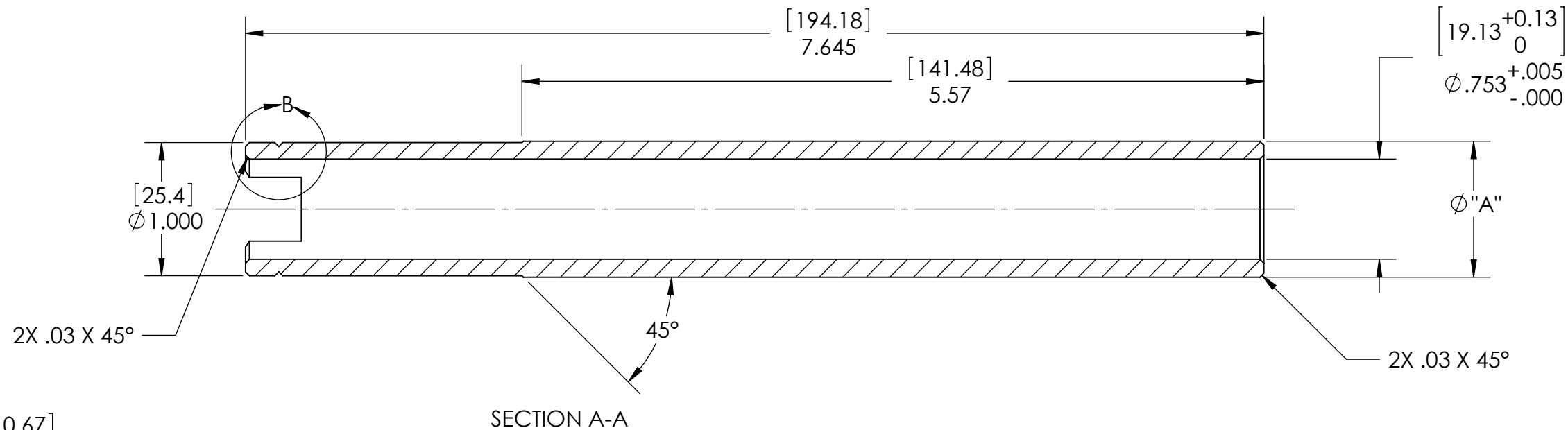
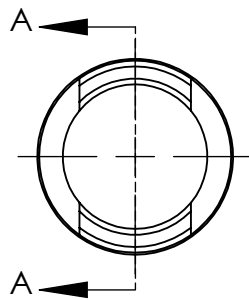
NOTES CONTINUED:
 ⑤ SCRIBE, ENGRAVE (A VIBRATORY TOOL MAY BE USED), LASER MARK OR MECHANICALLY STAMP (NO INKS OR DYES) DRAWING PART NUMBER, REVISION (AND VARIANT OR "TYPE" IF APPLICABLE) ON NOTED SURFACE OF PART FOLLOWED ON THE NEXT LINE WITH A THREE DIGIT SERIAL NUMBER. SERIAL NUMBERS START AT 001 FOR THE FIRST ARTICLE AND PROCEED CONSECUTIVELY. USE MINIMUM 0.12" HIGH CHARACTERS, UNLESS THE SIZE OF THE PART DICTATES SMALLER CHARACTERS. EXAMPLE: DXXXXXX-VY, TYPE-XX, S/N XXX

REV.	DATE	DCN #	DRAWING TREE #
v1	12 JUN 2013		

PART NUMBER	Ø "A"	GROOVE PLACES "N"
D1300544-1	1.020	1
D1300544-2	1.040	2
D1300544-3	1.060	3
D1300544-4	1.080	4



DETAIL B
 SCALE 2 : 1
 "N" PLACES, .12 SPACING



NOTES AND TOLERANCES: (UNLESS OTHERWISE SPECIFIED)
 DIMENSIONS ARE IN INCHES [MM]
 TOLERANCES:
 .XX ± .01
 .XXX ± .005
 ANGULAR ± 0.5°
 1. INTERPRET DRAWING PER ASME Y14.5-1994.
 2. REMOVE ALL SHARP EDGES, R.02 MIN.
 3. DO NOT SCALE FROM DRAWING.
 4. ALL MACHINING FLUIDS MUST BE FULLY SYNTHETIC, FULLY WATER SOLUBLE AND FREE OF SULFUR, SILICONE, AND CHLORINE.

CALIFORNIA INSTITUTE OF TECHNOLOGY MASSACHUSETTS INSTITUTE OF TECHNOLOGY		PART NAME OVERSIZE LOCATING SLEEVE, 220mm OPTIC CONTAINER	
SYSTEM	KAGRA	SUB-SYSTEM	N/A
DESIGNER	K. BUCKLAND	12 JUN 2013	SIZE DWG. NO.
DRAFTER	K. BUCKLAND	12 JUN 2013	B
CHECKER			D1300544
APPROVAL			REV. v1
MATERIAL		FINISH	NEXT ASSY
PFA440 HP		N/A µinch	D1300539
SCALE: 1:1		PROJECTION:	SHEET 1 OF 1