

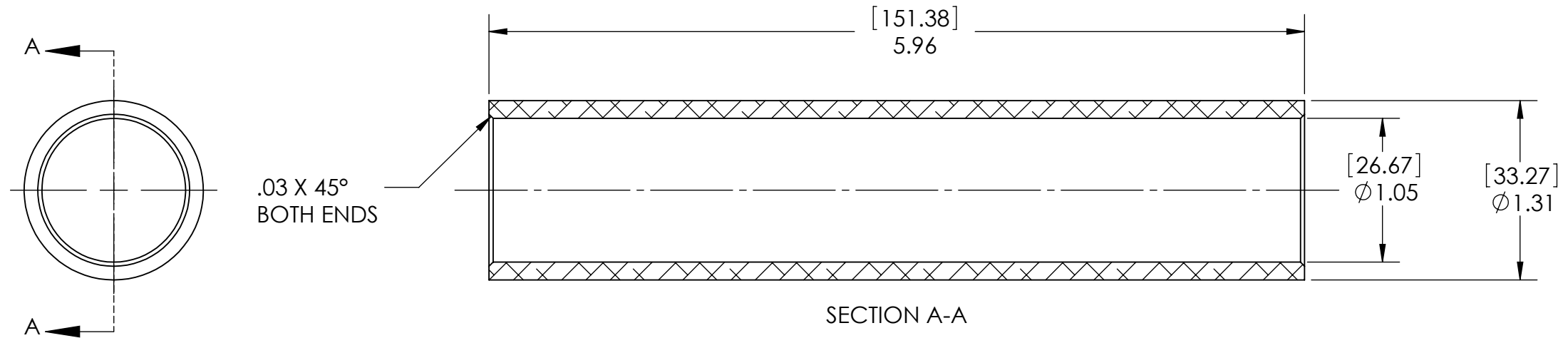
D1300543 KAGRA, SHIPPING SLEEVE, 220mm OPTIC CONTAINER, PART PDM REV: X-001, DRAWING PDM REV: X-001

8 7 6 5 4 3 2 1

NOTES CONTINUED:
5 SCRIBE, ENGRAVE (A VIBRATORY TOOL MAY BE USED), LASER MARK OR MECHANICALLY STAMP (NO INKS OR DYES) DRAWING PART NUMBER, REVISION (AND VARIANT OR "TYPE" IF APPLICABLE) ON NOTED SURFACE OF PART FOLLOWED ON THE NEXT LINE WITH A THREE DIGIT SERIAL NUMBER. SERIAL NUMBERS START AT 001 FOR THE FIRST ARTICLE AND PROCEED CONSECUTIVELY. USE MINIMUM 0.12" HIGH CHARACTERS, UNLESS THE SIZE OF THE PART DICTATES SMALLER CHARACTERS. EXAMPLE: DXXXXXX-VY, TYPE-XX, S/N XXX

REV.	DATE	DCN #	DRAWING TREE #
v1	12 JUN 2013		

CAN BE MADE FROM McMASTER #4481T113 TUBING



NOTES AND TOLERANCES: (UNLESS OTHERWISE SPECIFIED)				LIGO CALIFORNIA INSTITUTE OF TECHNOLOGY MASSACHUSETTS INSTITUTE OF TECHNOLOGY		PART NAME				
DIMENSIONS ARE IN INCHES [MM]				SYSTEM		SHIPPING SLEEVE, 220mm OPTIC CONTAINER				
TOLERANCES: .XX ± .01 .XXX ± .005				KAGRA		SUB-SYSTEM		DESIGNER		REV.
ANGULAR ± 0.5°				63 μinch		N/A		K. BUCKLAND 12 JUN 2013		v1
MATERIAL				NEXT ASSY		CHECKER		SIZE DWG. NO.		
6061-T6 Al				D1300539		K. MAILAND		B		D1300543
						APPROVAL		SCALE: 1:1		PROJECTION:
								SHEET 1 OF 1		

8 7 6 5 4 3 2 1