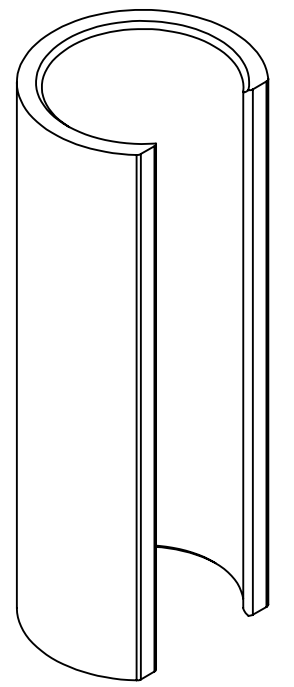
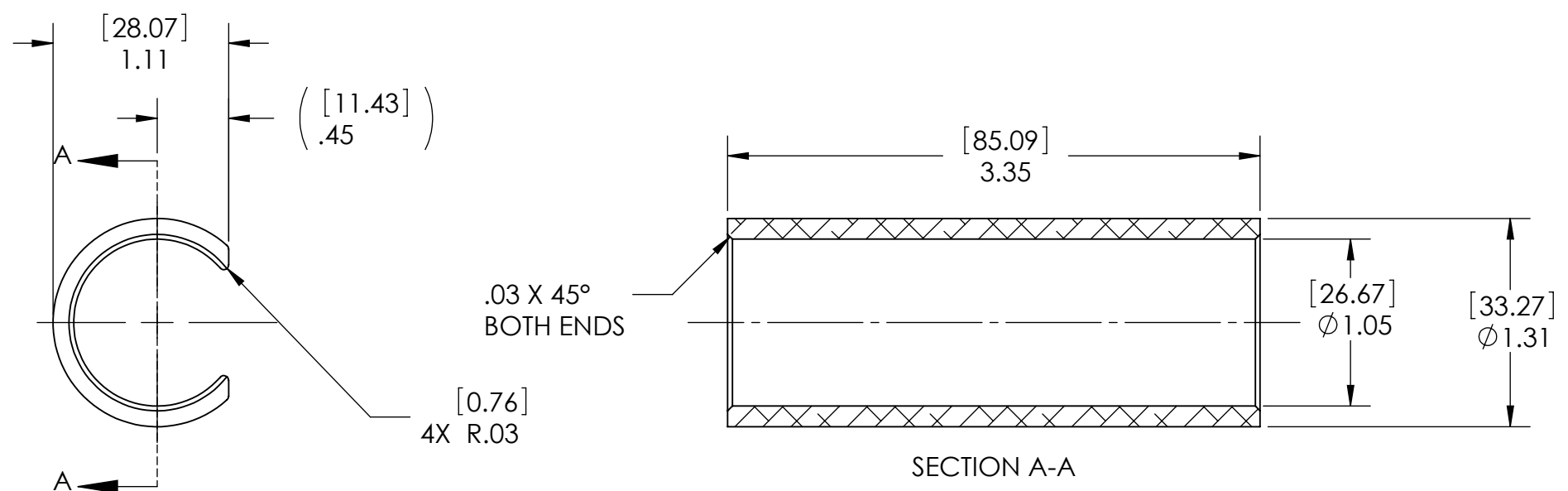


NOTES CONTINUED:
 5 SCRIBE, ENGRAVE (A VIBRATORY TOOL MAY BE USED), LASER MARK OR MECHANICALLY STAMP (NO INKS OR DYES) DRAWING PART NUMBER, REVISION (AND VARIANT OR "TYPE" IF APPLICABLE) ON NOTED SURFACE OF PART FOLLOWED ON THE NEXT LINE WITH A THREE DIGIT SERIAL NUMBER. SERIAL NUMBERS START AT 001 FOR THE FIRST ARTICLE AND PROCEED CONSECUTIVELY. USE MINIMUM 0.12" HIGH CHARACTERS, UNLESS THE SIZE OF THE PART DICTATES SMALLER CHARACTERS. EXAMPLE: DXXXXXX-VY, TYPE-XX, S/N XXX
 6 CAN BE MADE FROM McMASTER #4481T113 TUBING

REV.	DATE	DCN #	DRAWING TREE #
v1	11 JUN 2013		



D1300536 KAGRA, SHIPPING SLEEVE, 370mm OPTOC CONTAINER, PART PDM REV: X-002, DRAWING PDM REV: X-002

NOTES AND TOLERANCES: (UNLESS OTHERWISE SPECIFIED)				LIGO CALIFORNIA INSTITUTE OF TECHNOLOGY MASSACHUSETTS INSTITUTE OF TECHNOLOGY		PART NAME			
DIMENSIONS ARE IN INCHES [MM] TOLERANCES: .XX ± .01 .XXX ± .005 ANGULAR ± 0.5°				1. INTERPRET DRAWING PER ASME Y14.5-1994. 2. REMOVE ALL SHARP EDGES, R.02 MIN. 3. DO NOT SCALE FROM DRAWING. 4. ALL MACHINING FLUIDS MUST BE FULLY SYNTHETIC, FULLY WATER SOLUBLE AND FREE OF SULFUR, SILICONE, AND CHLORINE.		SHIPPING SLEEVE, 370mm OPTIC CONTAINER			
						SYSTEM KAGRA MATERIAL 6061-T6 Al FINISH 63 µinch	SUB-SYSTEM N/A NEXT ASSY D1300532	DESIGNER K. BUCKLAND DRAFTER K. BUCKLAND CHECKER APPROVAL	11 JUN 2013 11 JUN 2013