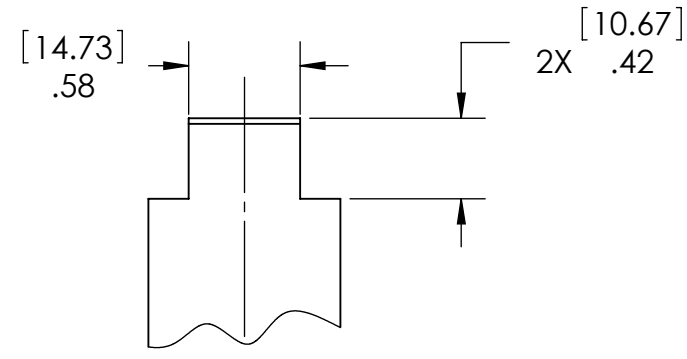
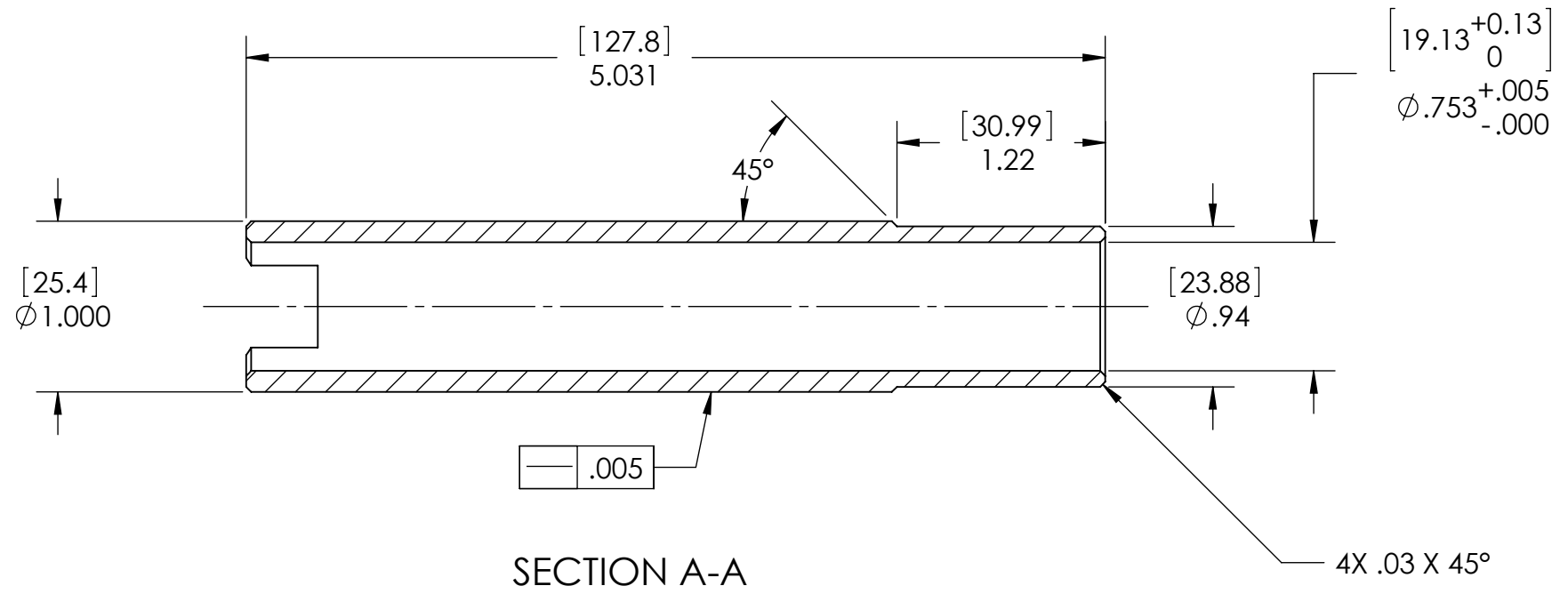
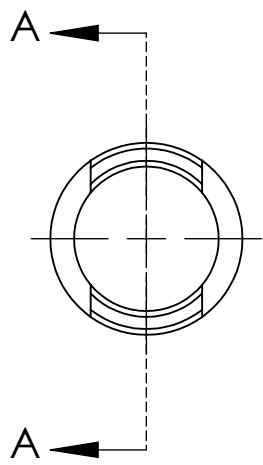


NOTES CONTINUED:
 ⑤ SCRIBE, ENGRAVE (A VIBRATORY TOOL MAY BE USED), LASER MARK OR MECHANICALLY STAMP (NO INKS OR DYES) DRAWING PART NUMBER, REVISION (AND VARIANT OR "TYPE" IF APPLICABLE) ON NOTED SURFACE OF PART FOLLOWED ON THE NEXT LINE WITH A THREE DIGIT SERIAL NUMBER. SERIAL NUMBERS START AT 001 FOR THE FIRST ARTICLE AND PROCEED CONSECUTIVELY. USE MINIMUM 0.12" HIGH CHARACTERS, UNLESS THE SIZE OF THE PART DICTATES SMALLER CHARACTERS. EXAMPLE: DXXXXXX-VY, TYPE-XX, S/N XXX

| REV. | DATE | DCN # | DRAWING TREE # |
|------|-------------|-------|----------------|
| v1 | 11 JUN 2013 | | |
| | | | |
| | | | |



SECTION A-A

D1300534 KAGRA, LOCATING SLEEVE, 370mm OPTIC CONTAINER, PART PDM REV: X-002, DRAWING PDM REV: X-003

| | | | | | | | |
|---|--|--|--|---|--|--|--|
| NOTES AND TOLERANCES: (UNLESS OTHERWISE SPECIFIED) DIMENSIONS ARE IN INCHES [MM] TOLERANCES: .XX ± .01 .XXX ± .005 ANGULAR ± 0.5° | | 1. INTERPRET DRAWING PER ASME Y14.5-1994. 2. REMOVE ALL SHARP EDGES, R.02 MIN. 3. DO NOT SCALE FROM DRAWING. 4. ALL MACHINING FLUIDS MUST BE FULLY SYNTHETIC, FULLY WATER SOLUBLE AND FREE OF SULFUR, SILICONE, AND CHLORINE. | | CALIFORNIA INSTITUTE OF TECHNOLOGY MASSACHUSETTS INSTITUTE OF TECHNOLOGY | | PART NAME LOCATING SLEEVE, 370mm OPTIC CONTAINER | |
| MATERIAL PFA440 HP (PRESHRUNK) | | FINISH N/A μinch | | SYSTEM KAGRA | | SUB-SYSTEM N/A | |
| NEXT ASSY D1300532 | | DESIGNER K. BUCKLAND | | DATE 11 JUN 2013 | | SIZE DWG. NO. B D1300534 | |
| | | DRAFTER K. BUCKLAND | | DATE 11 JUN 2013 | | REV. v1 | |
| | | CHECKER APPROVAL | | SCALE: 1:1 | | PROJECTION: SHEET 1 OF 1 | |