

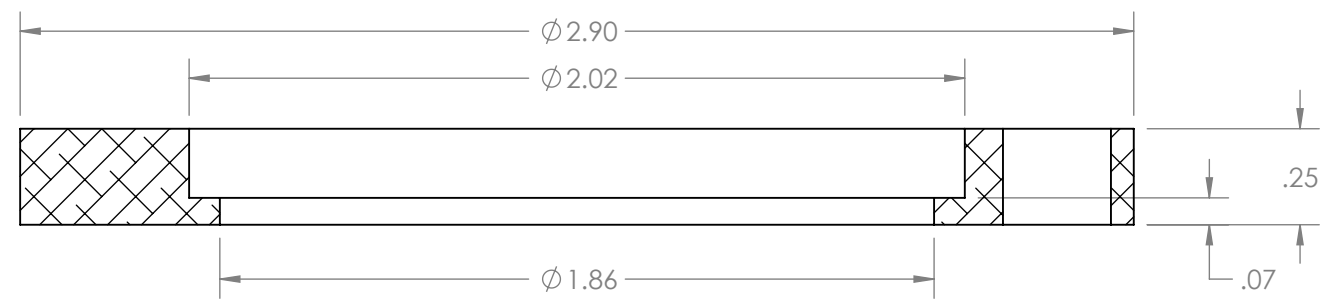
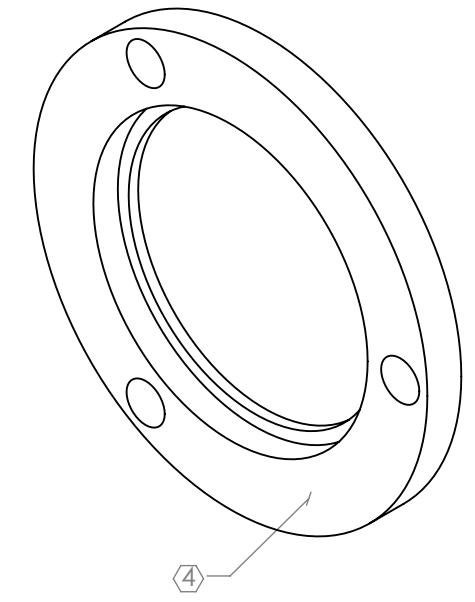
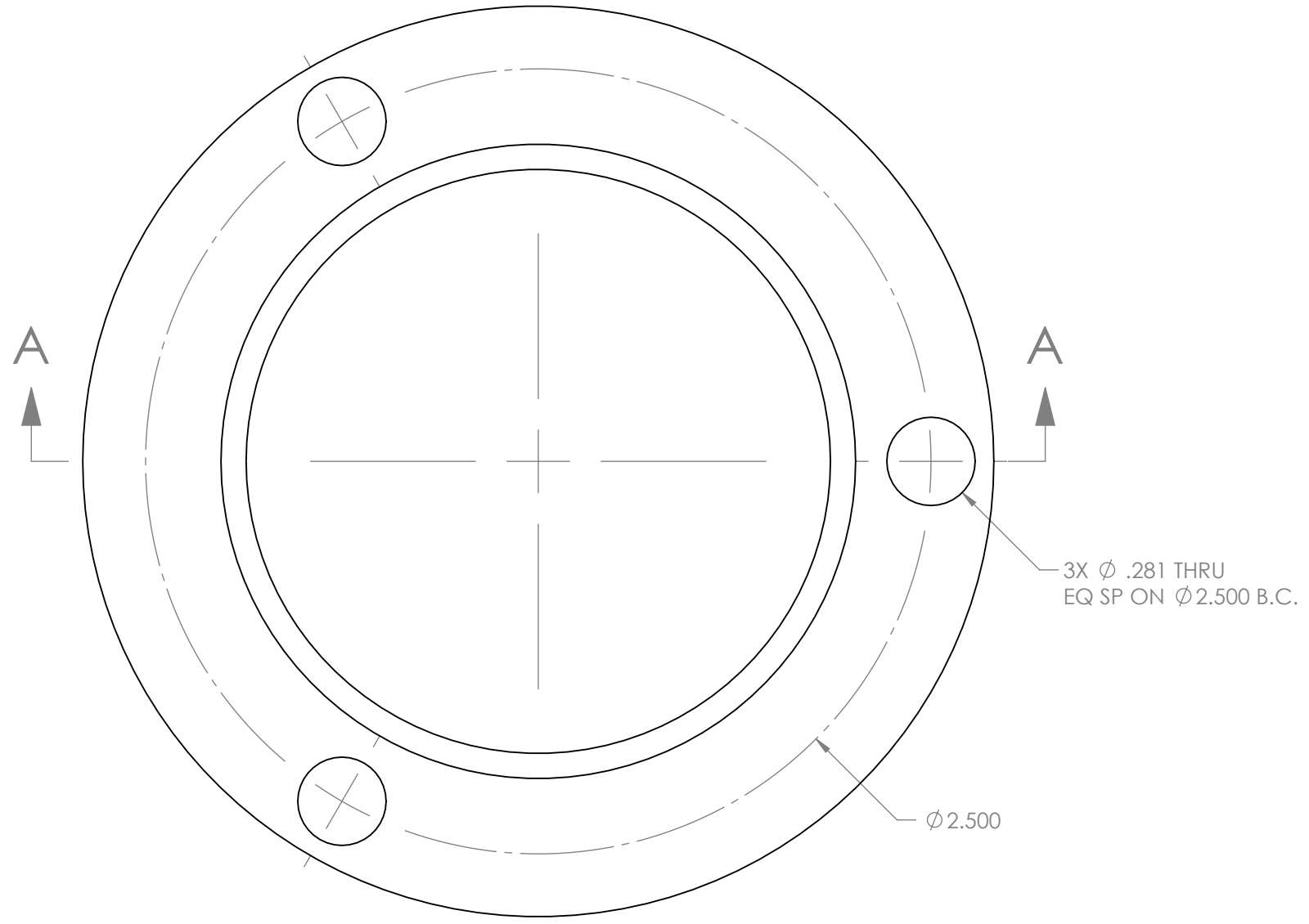
8 7 6 5 4 3 2 1

**NOTES CONTINUED:**

④ SCRIBE, ENGRAVE (A VIBRATORY TOOL MAY BE USED), LASER MARK OR MECHANICALLY STAMP (NO INKS OR DYES) DRAWING PART NUMBER, REVISION ON NOTED SURFACE OF PART FOLLOWED ON THE NEXT LINE WITH A THREE DIGIT SERIAL NUMBER. SERIAL NUMBERS START AT 001 FOR THE FIRST ARTICLE AND PROCEED CONSECUTIVELY. USE MINIMUM 0.12" HIGH CHARACTERS, UNLESS THE SIZE OF THE PART DICTATES SMALLER CHARACTERS. EXAMPLE: D1300482-v1, S/N 001

REV.	DATE	DCN #	DRAWING TREE #
v1	29 MAY 2013	-	-
-	-	-	-
-	-	-	-

5. WEIGHT: 0.08 LB.



SECTION A-A

D1300482 aLIGO Pcal Tooling, 2 in. Mirror Clamp, PART PDM REV: X-005, DRAWING PDM REV: X-001

<p><b>NOTES AND TOLERANCES: (UNLESS OTHERWISE SPECIFIED)</b></p> <p>DIMENSIONS ARE IN INCHES</p> <p>TOLERANCES:                  .XX ± .01                  .XXX ± .005                  ANGULAR ± 0.5°</p>		<p>1. INTERPRET DRAWING PER ASME Y14.5-1994.                  2. BREAK ALL SHARP EDGES, .02 MAX.                  3. DO NOT SCALE FROM DRAWING.</p>		<p><b>LIGO</b> CALIFORNIA INSTITUTE OF TECHNOLOGY                  MASSACHUSETTS INSTITUTE OF TECHNOLOGY</p>		<p>PART NAME                  aLIGO PCAL TOOLING,                  2" MIRROR CLAMP</p>	
<p>MATERIAL                  6061-T6 Al</p>		<p>FINISH                  250 μinch Ra MAX</p>		<p>SYSTEM                  ADVANCED LIGO</p>		<p>SUB-SYSTEM                  AOS</p>	
<p>DESIGNER                  R. SAVAGE</p>		<p>CHECKER                  C. CONLEY</p>		<p>DATE                  09 MAY 2013</p>		<p>SIZE DWG. NO.                  B D1300482</p>	
<p>DRAFTER                  C. CONLEY</p>		<p>APPROVAL</p>		<p>DATE                  29 MAY 2013</p>		<p>REV.                  v1</p>	
<p>SCALE: NONE</p>		<p>PROJECTION:</p>		<p>SHEET 1 OF 1</p>		<p></p>	

8 7 6 5 4 3 2 1