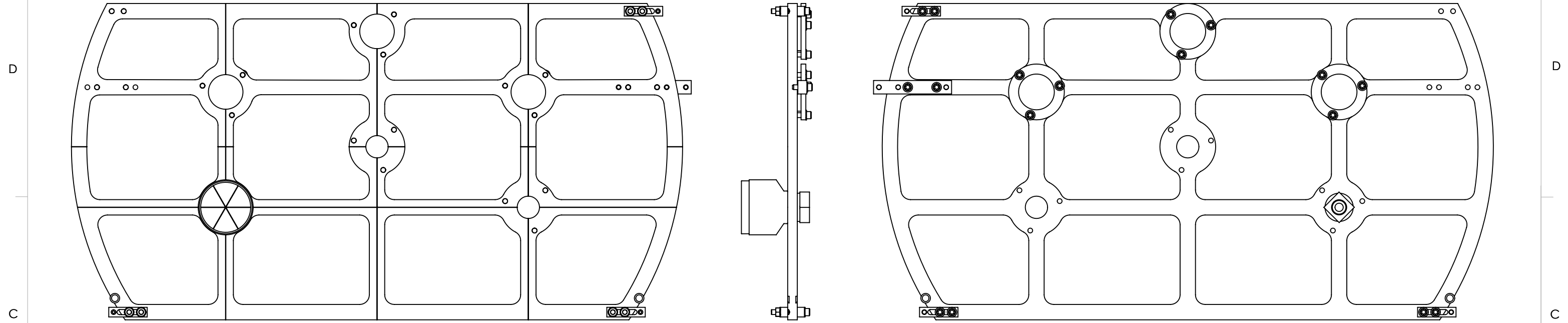


8 7 6 5 4 3 2 1

**NOTES CONTINUED:**

- 1. -01 AND -02 CONFIGURATIONS CAN BE MADE FROM THE IDENTICAL SET OF PARTS.
- 2. WEIGHT: 9.37 LB [4.25 KG]

REV.	DATE	DCN #	DRAWING TREE #
v1	16 JUL 2013	-	-



**-01 (Y-ARM) SHOWN**

14	D1300497	αLIGO PCAL TOOLING: CORNER QUBE ATTACHMENT NUT	6061-T6 Al	1	1		1
13	98019A519 (McM-Carr) or equiv PER MS 15795-822	WASHER, FLAT, 3/4	300 SSSL	1	1		1
12	D1300125	SOKKIA 30MM OFFSET CORNER CUBE	N/A	1	1		1
11	D1300482	αLIGO PCAL TOOLING, 2" MIRROR CLAMP	6061-T6 Al	3	3		3
10	MI2045-1047 (PRECISION PHOTONICS)	MIRROR, 2" DIAMETER, 1047NM HR, 45 DEGREE INCIDENCE	GLASS	3	3		3
9	92778A127 (McM-Carr) or equiv	SCREW, SOCKET SET, OVAL POINT, 1/4-20 UNC X 0.5 LONG	300 SSSL	3	3		3
8	91845A029 (McM-Carr) or equiv	HEX NUT, 1/4-20	300 SSSL	6	6		6
7	92196A548 (McM-Carr) or equiv	SCREW, SOCKET HEAD CAP, 1/4-20 UNC-2A X 1.75 LONG	300 SSSL	6	6		6
6	CL3 (ThorLabs)	TABLE CLAMP, ANODIZED		6	6		6
5	92196A541 (McM-Carr) or equiv	SCREW, SOCKET HEAD CAP, 1/4-20 UNC-2A X 0.875 LONG	300 SSSL	11	11		11
4	98017A655 (McM-Carr) or equiv PER NAS 1149-C0432R	WASHER, FLAT, 1/4	300 SSSL	23	23		23
3	D1300483	αLIGO PCAL TOOLING, PERISCOPE TARGET CLOCKPIECE ASSEMBLY	N/A	1	1		1
2	98380A692 (McM-Carr) or equiv	DOWEL PIN, 1/2D, 1/2L	416 SSSL	2	2		2
1	D1300384	αLIGO PCAL TOOLING, PERISCOPE INSTALLATION CENTER TARGET PLATE	6061-T6 Al	1	1		1
ITEM NO.	PART NUMBER	DESCRIPTION	MATERIAL	-01 (Y-Arm) QTY.	-02 (X-Arm) QTY.	SPARE	TOTAL

NOTES AND TOLERANCES: (UNLESS OTHERWISE SPECIFIED)

DIMENSIONS ARE IN  
TOLERANCES:  
.XX ±  
.XXX ±  
ANGULAR ± °

MATERIAL N/A FINISH N/A μinch

**LIGO** CALIFORNIA INSTITUTE OF TECHNOLOGY  
MASSACHUSETTS INSTITUTE OF TECHNOLOGY

SYSTEM ADVANCED LIGO SUB-SYSTEM AOS

NEXT ASSY N/A

PART NAME αLIGO PCAL TOOLING,  
PERISCOPE CENTER TARGET ASSEMBLY

DESIGNER R. SAVAGE 06 MAY 2013  
DRAFTER C. CONLEY 16 JUL 2013  
CHECKER C. CONLEY 16 JUL 2013  
APPROVAL

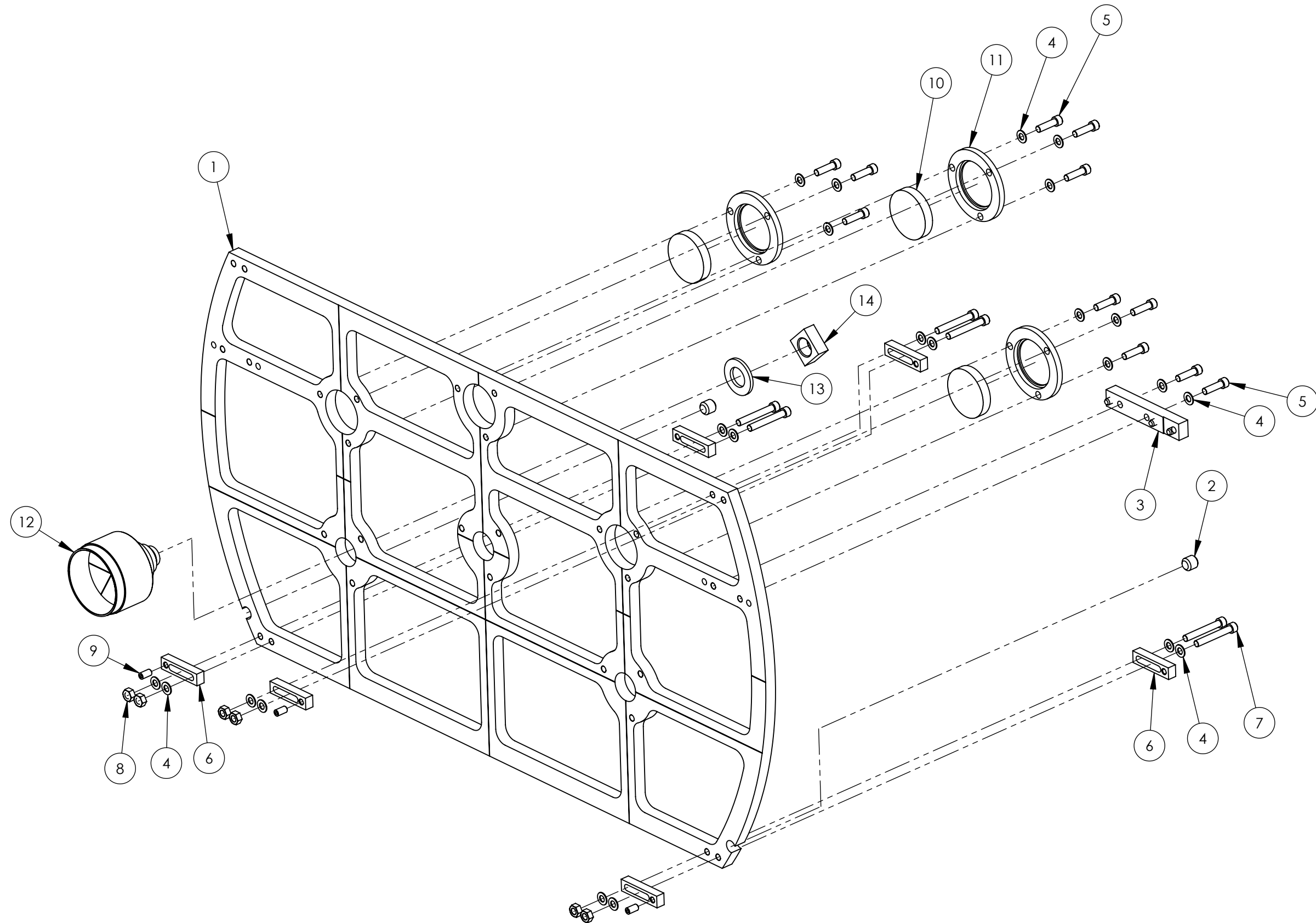
SIZE DWG. NO. B D1300437 REV. v1

SCALE: NONE PROJECTION: SHEET 1 OF 3


8 7 6 5 4 3 2 1

D1300437 αLIGO Pcal Tooling, Periscope Center Target Assembly, PART PDM REV: X-072, DRAWING PDM REV: X-001

D1300437 aLIGO Pcal Tooling, Periscope Center Target Assembly, PART PDM REV: X-072, DRAWING PDM REV: X-001



**-01 (Y-ARM) SHOWN**

 <b>CALIFORNIA INSTITUTE OF TECHNOLOGY</b> <b>MASSACHUSETTS INSTITUTE OF TECHNOLOGY</b>		
SIZE	DWG. NO.	REV.
<b>B</b>	D1300437	v1
SCALE: NONE	PROJECTION:	SHEET 2 OF 3

8 7 6 5 4 3 2 1

D  
C  
B  
A

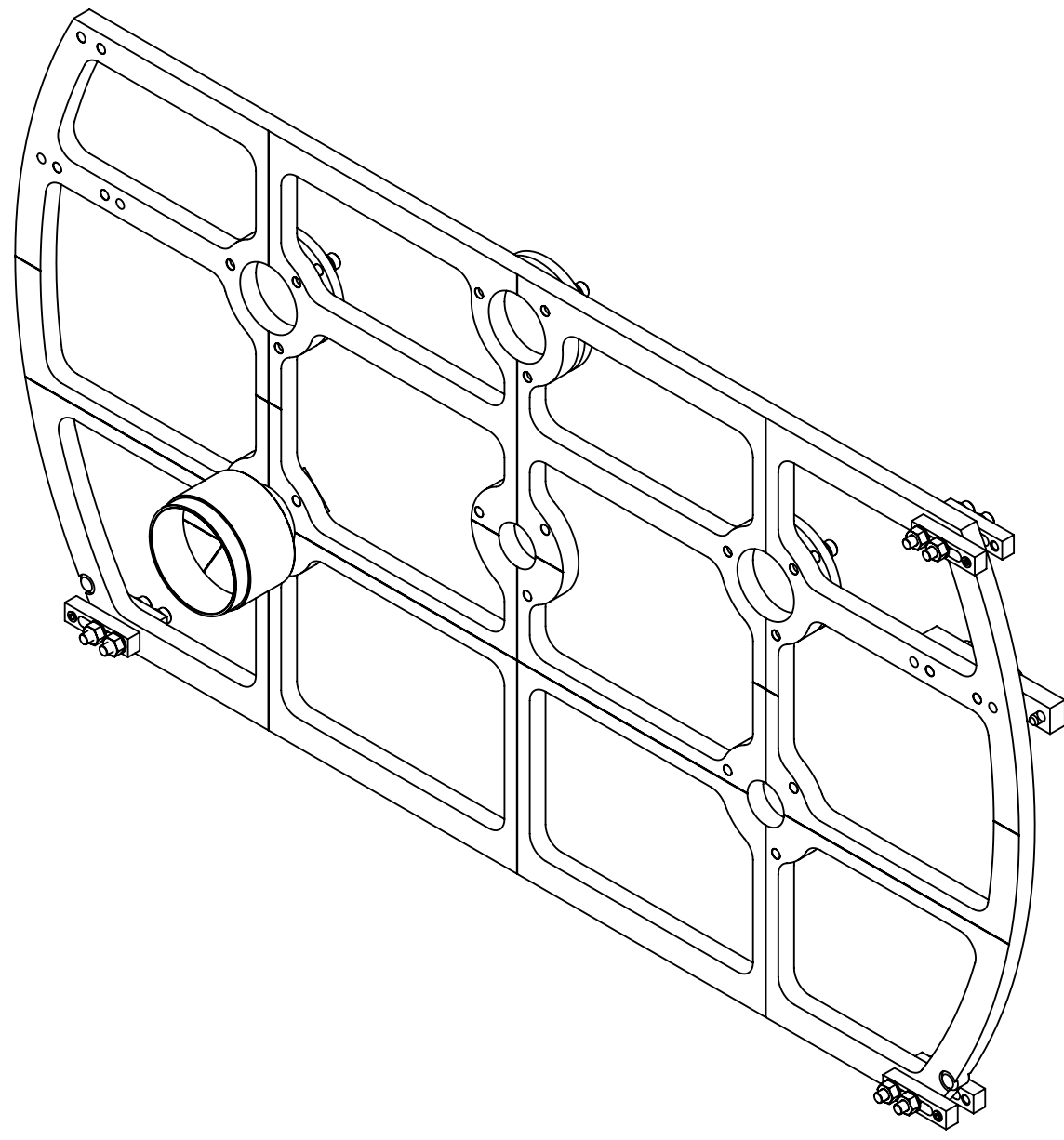
D  
C  
B  
A

8 7 6 5 4 3 2 1

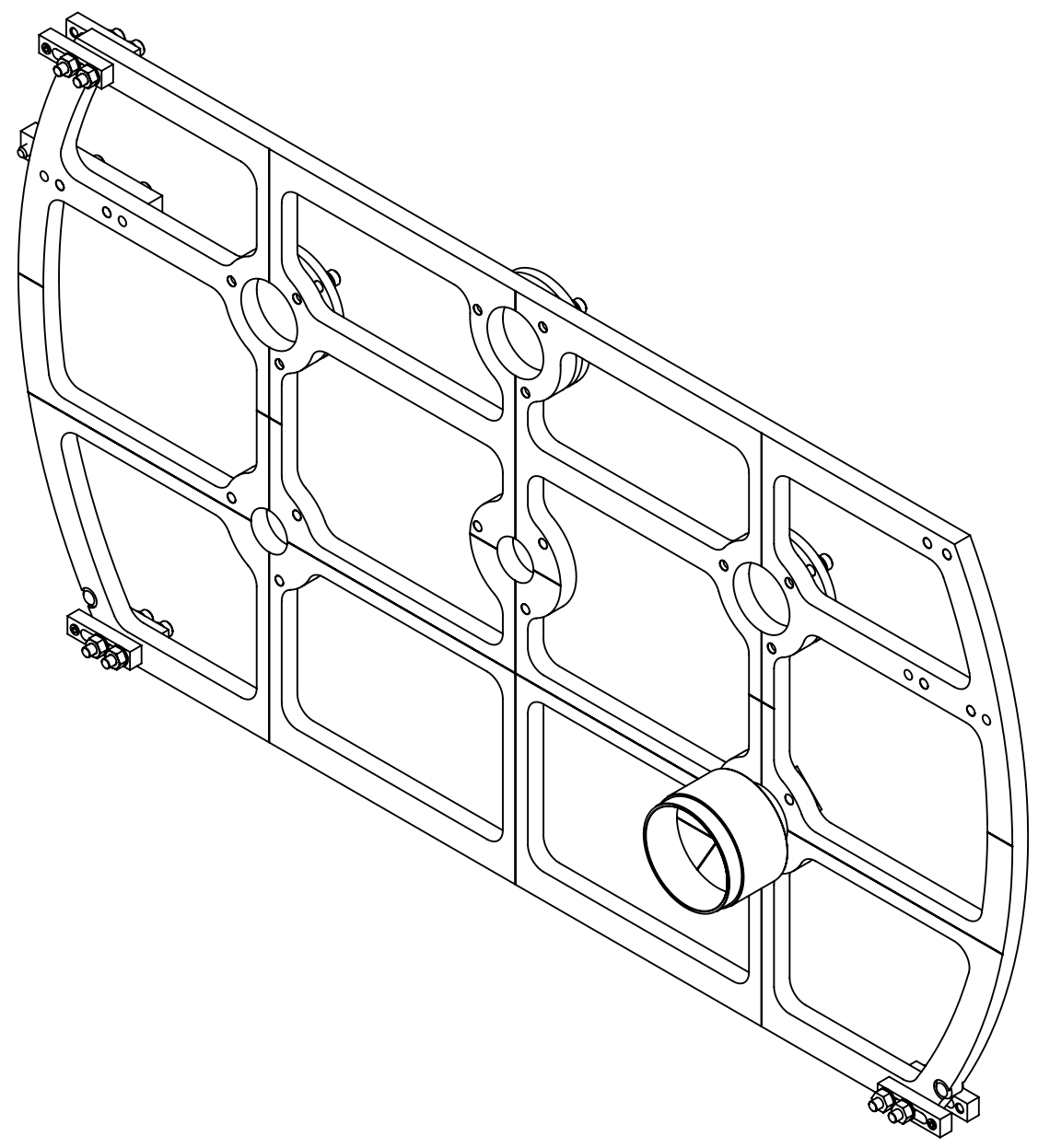
D1300437 aLIGO Pcal Tooling, Periscope Center Target Assembly, PART PDM REV: X-072, DRAWING PDM REV: X-001

8 7 6 5 4 3 2 1

D  
C  
B  
A





**-01 (Y-ARM)**  
①



**-02 (X-ARM)**  
①

8 7 6 5 4 3 2 1

 CALIFORNIA INSTITUTE OF TECHNOLOGY MASSACHUSETTS INSTITUTE OF TECHNOLOGY		
SIZE <b>B</b>	DWG. NO. D1300437	REV. v1
SCALE: NONE	PROJECTION: 	SHEET 3 OF 3