

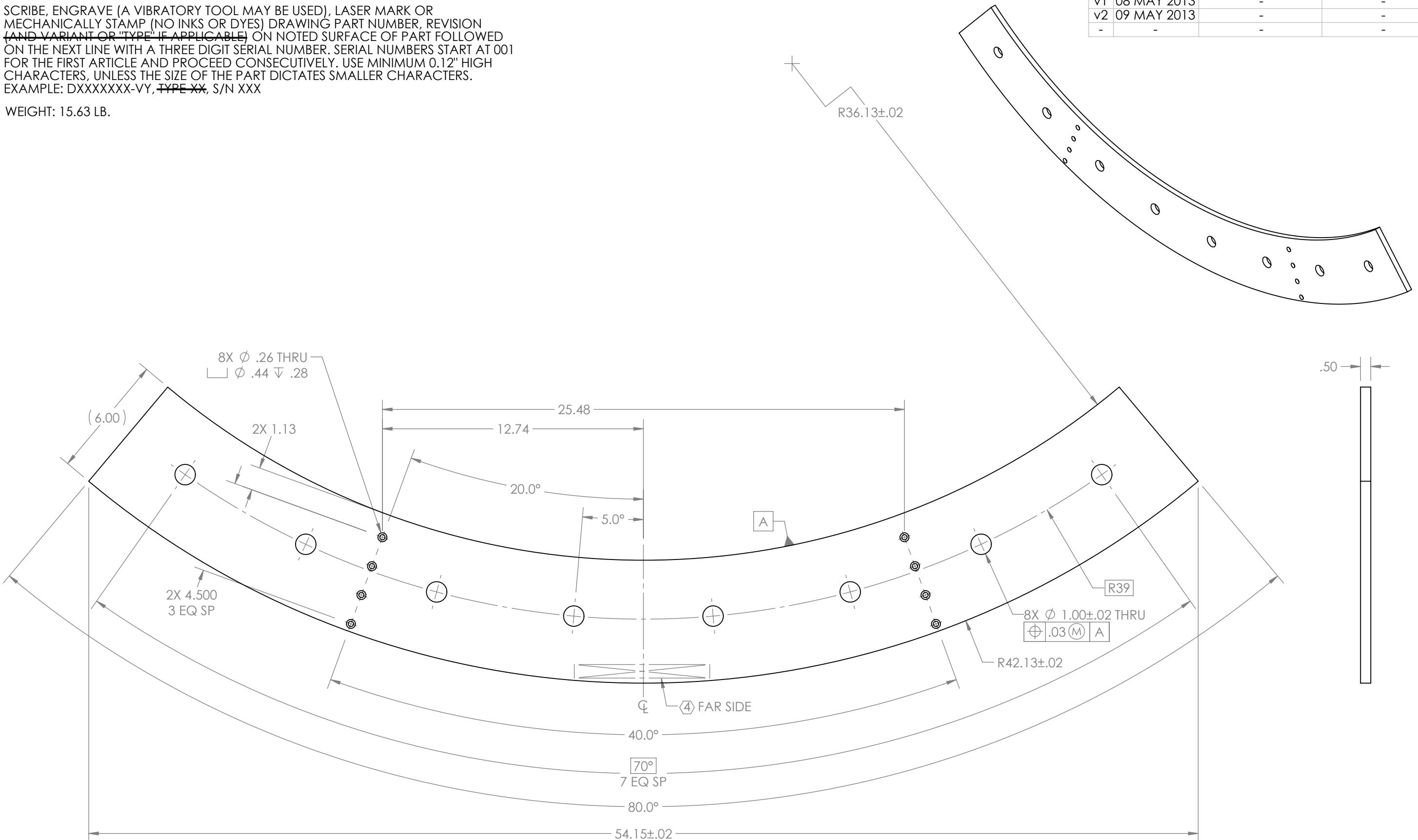
8 7 6 5 4 3 2 1

REV.	DATE	DCN #	DRAWING TREE #
v1	08 MAY 2013	-	-
v2	09 MAY 2013	-	-
-	-	-	-

NOTES CONTINUED:

④ SCRIBE, ENGRAVE (A VIBRATORY TOOL MAY BE USED), LASER MARK OR MECHANICALLY STAMP (NO INKS OR DYES) DRAWING PART NUMBER, REVISION (AND VARIANT OR "TYPE" IF APPLICABLE) ON NOTED SURFACE OF PART FOLLOWED ON THE NEXT LINE WITH A THREE DIGIT SERIAL NUMBER. SERIAL NUMBERS START AT 001 FOR THE FIRST ARTICLE AND PROCEED CONSECUTIVELY. USE MINIMUM 0.12" HIGH CHARACTERS, UNLESS THE SIZE OF THE PART DICTATES SMALLER CHARACTERS. EXAMPLE: DXXXXXXX-VY, TYPE XX, S/N XXX

5. WEIGHT: 15.63 LB.



D1300380 aLIGO Pcal Tooling, Periscope Installation Entry Pad Mount, PART PDM REV: X-004, DRAWING PDM REV: X-004

NOTES AND TOLERANCES: (UNLESS OTHERWISE SPECIFIED)	
DIMENSIONS ARE IN INCHES	
TOLERANCES: .XX ± .01 .XXX ± .005 ANGULAR ± 0.5°	
MATERIAL	6061-T6 Al
FINISH	250 μinch Ra MAX

CALIFORNIA INSTITUTE OF TECHNOLOGY MASSACHUSETTS INSTITUTE OF TECHNOLOGY	PART NAME		aLIGO PCAL TOOLING, PERISCOPE INSTALLATION ENTRY PAD MOUNT	
	SYSTEM	SUB-SYSTEM	DESIGNER	REV.
ADVANCED LIGO	AOS	R. SAVAGE	03 MAY 2013	SIZE DWG. NO.
NEXT ASSY	D1300379	C. CONLEY	08 MAY 2013	D1300380
		DRAFTER	C. CONLEY	08 MAY 2013
		CHECKER		
		APPROVAL		
		SCALE: NONE		PROJECTION:
		SHEET 1 OF 1		