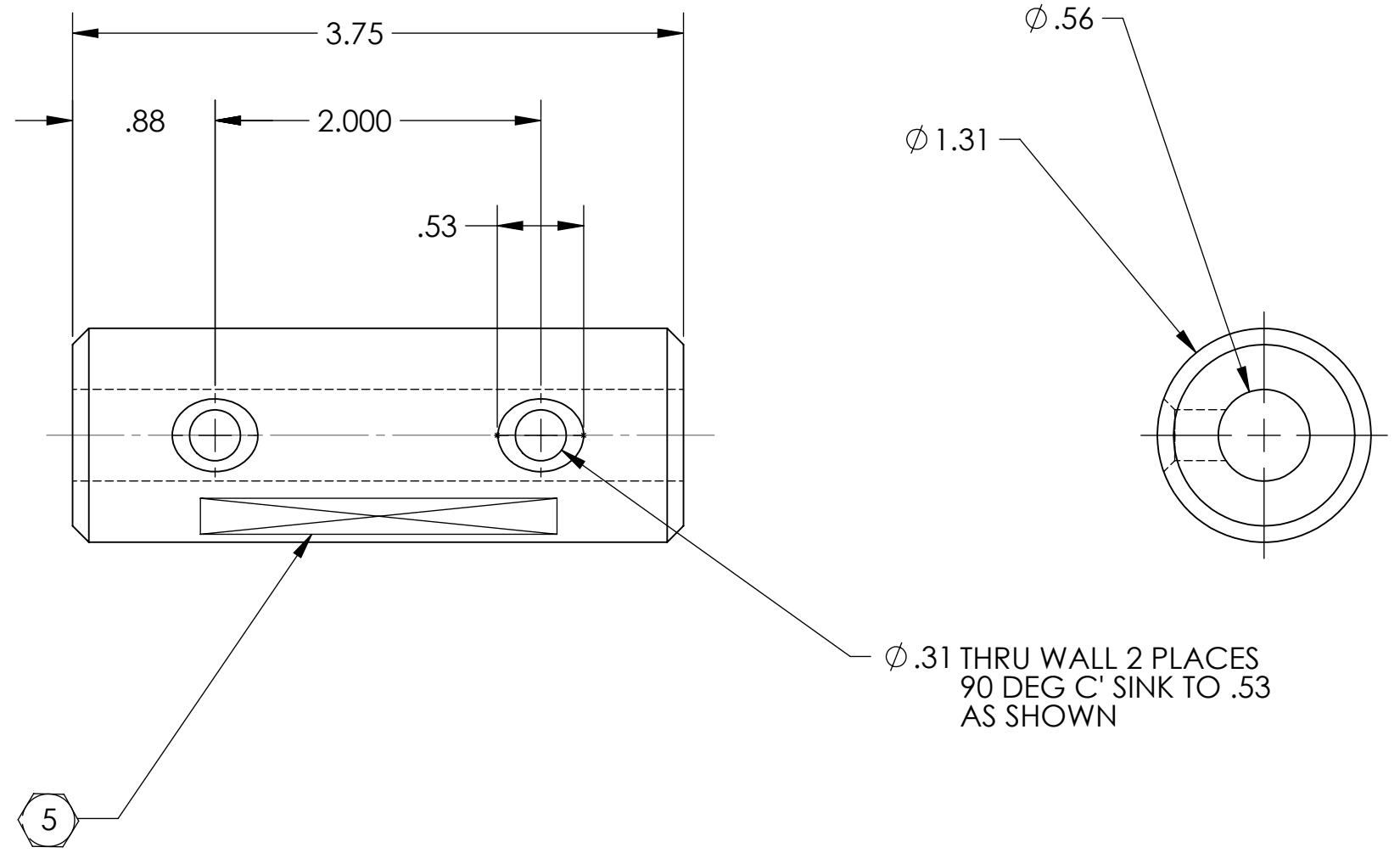
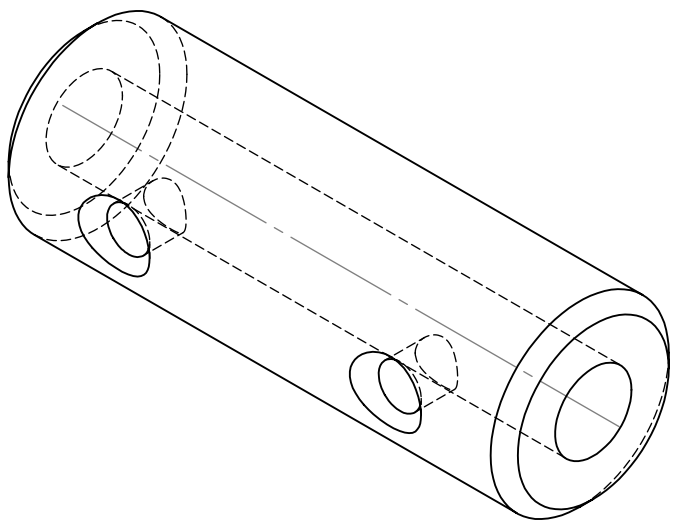


8 7 6 5 4 3 2 1

NOTES CONTINUED:
 5 SCRIBE, ENGRAVE, OR MECHANICALLY STAMP (NO INKS OR DYES) DRAWING PART NUMBER, REVISION (AND VARIANT OR "TYPE" IF APPLICABLE) ON NOTED SURFACE OF PART FOLLOWED ON THE NEXT LINE WITH A THREE DIGIT SERIAL NUMBER. SERIAL NUMBERS START AT 001 FOR THE FIRST ARTICLE AND PROCEED CONSECUTIVELY. USE MINIMUM 0.12" HIGH CHARACTERS, UNLESS THE SIZE OF THE PART DICTATES SMALLER CHARACTERS. A VIBRATORY TOOL MAY BE USED.
 EXAMPLE: DXXXXXX-VY, TYPE-XX, S/N XXX

REV.	DATE	DCN #	DRAWING TREE #
V1	5-1-13	TO FOLLOW	E1200793
-	-	-	-
-	-	-	-



5

D1300378 aLigo Swing Stop Cross Bar Plug, PART PDM REV: X-000, DRAWING PDM REV: X-000

NOTES AND TOLERANCES: (UNLESS OTHERWISE SPECIFIED)				LIGO CALIFORNIA INSTITUTE OF TECHNOLOGY MASSACHUSETTS INSTITUTE OF TECHNOLOGY		PART NAME	
DIMENSIONS ARE IN INCHES				ADVANCED LIGO		aLigo Swing Stop Cross Bar Plug	
TOLERANCES: .XX ± .02 .XXX ± .005				SUB-SYSTEM AOS		DESIGNER	K MAILAND 5-1-13
ANGULAR ± 1.0°				NEXT ASSY D1300248		DRAFTER	K MAILAND 5-1-13
MATERIAL 6061-T6 (SS)		FINISH N/A µinch		CHECKER	K MAILAND 5-1-13	SIZE DWG. NO.	B D1300378
						APPROVAL	
						SCALE:	1:1
						PROJECTION:	AS SHOWN
						SHEET 1 OF 1	

8 7 6 5 4 3 2 1