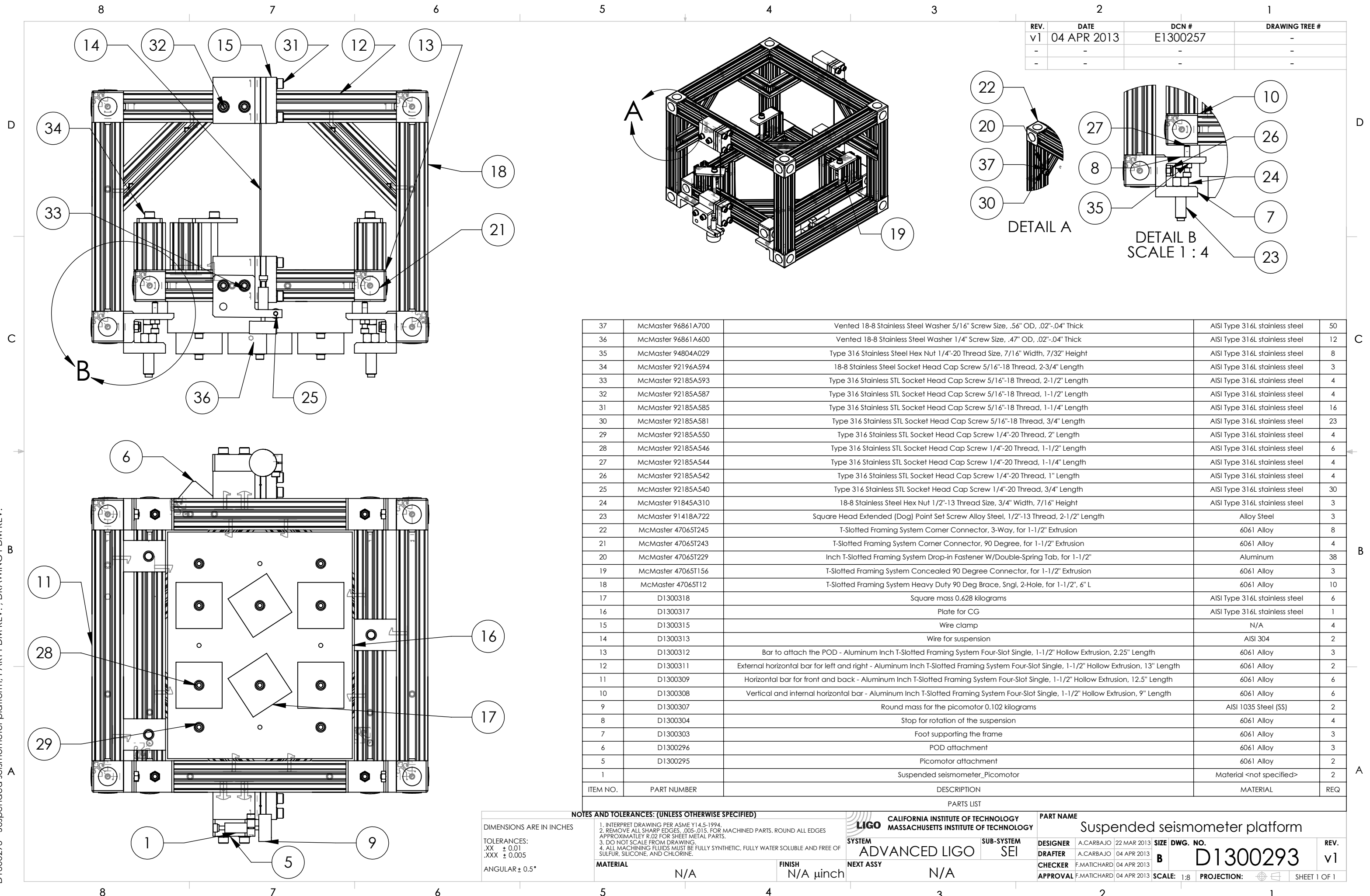


D1300293 - Suspended seismometer platform, PART PDM REV: , DRAWING PDM REV:

REV.	DATE	DCN #	DRAWING TREE #
v1	04 APR 2013	E1300257	-
-	-	-	-
-	-	-	-



37	McMaster 96861A700	Vented 18-8 Stainless Steel Washer 5/16" Screw Size, .56" OD, .02"-.04" Thick	AISI Type 316L stainless steel	50
36	McMaster 96861A600	Vented 18-8 Stainless Steel Washer 1/4" Screw Size, .47" OD, .02"-.04" Thick	AISI Type 316L stainless steel	12
35	McMaster 94804A029	Type 316 Stainless Steel Hex Nut 1/4"-20 Thread Size, 7/16" Width, 7/32" Height	AISI Type 316L stainless steel	8
34	McMaster 92196A594	18-8 Stainless Steel Socket Head Cap Screw 5/16"-18 Thread, 2-3/4" Length	AISI Type 316L stainless steel	3
33	McMaster 92185A593	Type 316 Stainless STL Socket Head Cap Screw 5/16"-18 Thread, 2-1/2" Length	AISI Type 316L stainless steel	4
32	McMaster 92185A587	Type 316 Stainless STL Socket Head Cap Screw 5/16"-18 Thread, 1-1/2" Length	AISI Type 316L stainless steel	4
31	McMaster 92185A585	Type 316 Stainless STL Socket Head Cap Screw 5/16"-18 Thread, 1-1/4" Length	AISI Type 316L stainless steel	16
30	McMaster 92185A581	Type 316 Stainless STL Socket Head Cap Screw 5/16"-18 Thread, 3/4" Length	AISI Type 316L stainless steel	23
29	McMaster 92185A550	Type 316 Stainless STL Socket Head Cap Screw 1/4"-20 Thread, 2" Length	AISI Type 316L stainless steel	4
28	McMaster 92185A546	Type 316 Stainless STL Socket Head Cap Screw 1/4"-20 Thread, 1-1/2" Length	AISI Type 316L stainless steel	6
27	McMaster 92185A544	Type 316 Stainless STL Socket Head Cap Screw 1/4"-20 Thread, 1-1/4" Length	AISI Type 316L stainless steel	4
26	McMaster 92185A542	Type 316 Stainless STL Socket Head Cap Screw 1/4"-20 Thread, 1" Length	AISI Type 316L stainless steel	4
25	McMaster 92185A540	Type 316 Stainless STL Socket Head Cap Screw 1/4"-20 Thread, 3/4" Length	AISI Type 316L stainless steel	30
24	McMaster 91845A310	18-8 Stainless Steel Hex Nut 1/2"-13 Thread Size, 3/4" Width, 7/16" Height	AISI Type 316L stainless steel	3
23	McMaster 91418A722	Square Head Extended (Dog) Point Set Screw Alloy Steel, 1/2"-13 Thread, 2-1/2" Length	Alloy Steel	3
22	McMaster 47065T245	T-Slotted Framing System Corner Connector, 3-Way, for 1-1/2" Extrusion	6061 Alloy	8
21	McMaster 47065T243	T-Slotted Framing System Corner Connector, 90 Degree, for 1-1/2" Extrusion	6061 Alloy	4
20	McMaster 47065T229	Inch T-Slotted Framing System Drop-in Fastener W/Double-Spring Tab, for 1-1/2"	Aluminum	38
19	McMaster 47065T156	T-Slotted Framing System Concealed 90 Degree Connector, for 1-1/2" Extrusion	6061 Alloy	3
18	McMaster 47065T12	T-Slotted Framing System Heavy Duty 90 Deg Brace, Sngl, 2-Hole, for 1-1/2", 6" L	6061 Alloy	10
17	D1300318	Square mass 0.628 kilograms	AISI Type 316L stainless steel	6
16	D1300317	Plate for CG	AISI Type 316L stainless steel	1
15	D1300315	Wire clamp	N/A	4
14	D1300313	Wire for suspension	AISI 304	2
13	D1300312	Bar to attach the POD - Aluminum Inch T-Slotted Framing System Four-Slot Single, 1-1/2" Hollow Extrusion, 2.25" Length	6061 Alloy	3
12	D1300311	External horizontal bar for left and right - Aluminum Inch T-Slotted Framing System Four-Slot Single, 1-1/2" Hollow Extrusion, 13" Length	6061 Alloy	2
11	D1300309	Horizontal bar for front and back - Aluminum Inch T-Slotted Framing System Four-Slot Single, 1-1/2" Hollow Extrusion, 12.5" Length	6061 Alloy	6
10	D1300308	Vertical and internal horizontal bar - Aluminum Inch T-Slotted Framing System Four-Slot Single, 1-1/2" Hollow Extrusion, 9" Length	6061 Alloy	6
9	D1300307	Round mass for the picomotor 0.102 kilograms	AISI 1035 Steel (SS)	2
8	D1300304	Stop for rotation of the suspension	6061 Alloy	4
7	D1300303	Foot supporting the frame	6061 Alloy	3
6	D1300296	POD attachment	6061 Alloy	3
5	D1300295	Picomotor attachment	6061 Alloy	2
1		Suspended seismometer_Picomotor	Material <not specified>	2
ITEM NO.	PART NUMBER	DESCRIPTION	MATERIAL	REQ

NOTES AND TOLERANCES: (UNLESS OTHERWISE SPECIFIED)

- INTERPRET DRAWING PER ASME Y14.5-1994.
- REMOVE ALL SHARP EDGES, .005-.015, FOR MACHINED PARTS. ROUND ALL EDGES APPROXIMATELY R.02 FOR SHEET METAL PARTS.
- DO NOT SCALE FROM DRAWING.
- ALL MACHINING FLUIDS MUST BE FULLY SYNTHETIC, FULLY WATER SOLUBLE AND FREE OF SULFUR, SILICONE, AND CHLORINE.

DIMENSIONS ARE IN INCHES
 TOLERANCES:
 .XX ± 0.01
 .XXX ± 0.005
 ANGULAR ± 0.5°

MATERIAL N/A **FINISH** N/A μinch

LIGO CALIFORNIA INSTITUTE OF TECHNOLOGY
 MASSACHUSETTS INSTITUTE OF TECHNOLOGY

SYSTEM ADVANCED LIGO **SUB-SYSTEM** SEI

PART NAME Suspended seismometer platform

DESIGNER	A.CARBAJO	22 MAR 2013	SIZE	DWG. NO.	REV.
DRAFTER	A.CARBAJO	04 APR 2013	B	D1300293	v1
CHECKER	F.MATICHARD	04 APR 2013	SCALE:	PROJECTION:	SHEET 1 OF 1
APPROVAL	F.MATICHARD	04 APR 2013	1:8		