

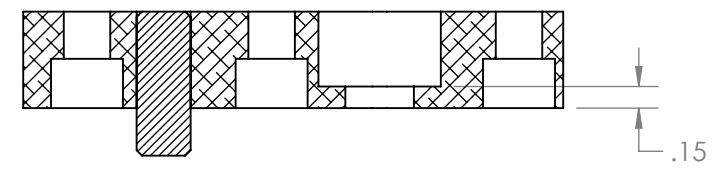
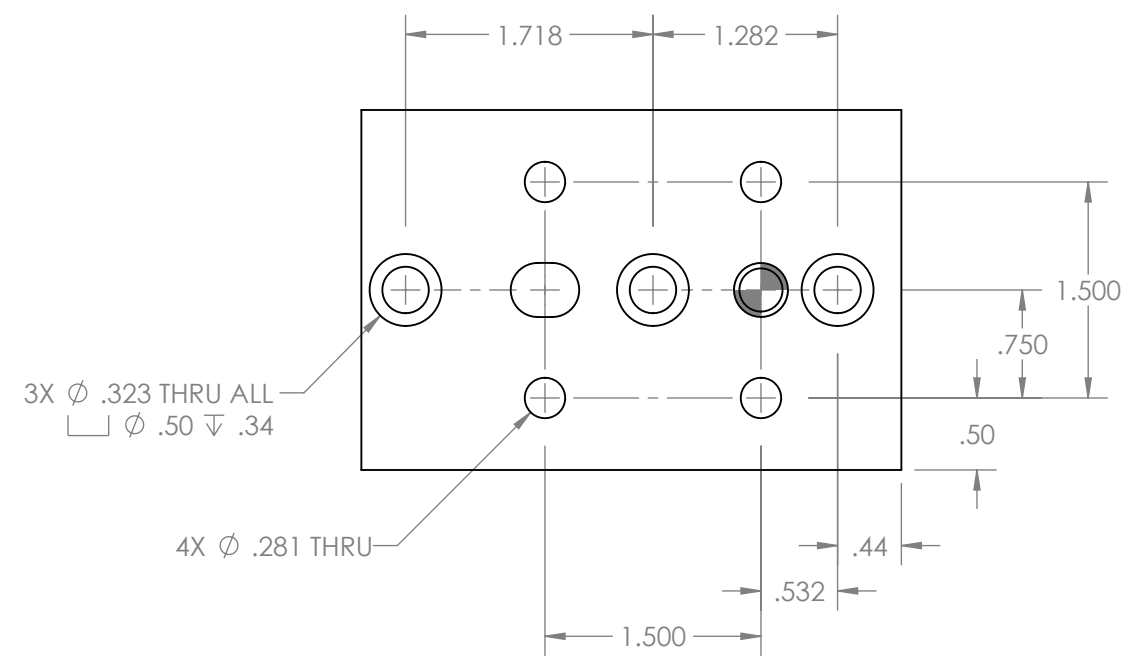
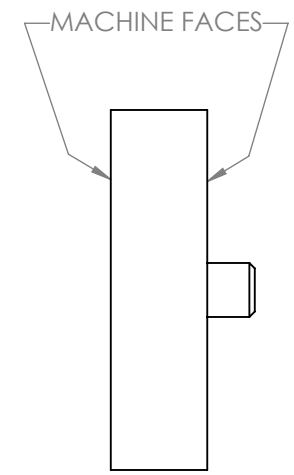
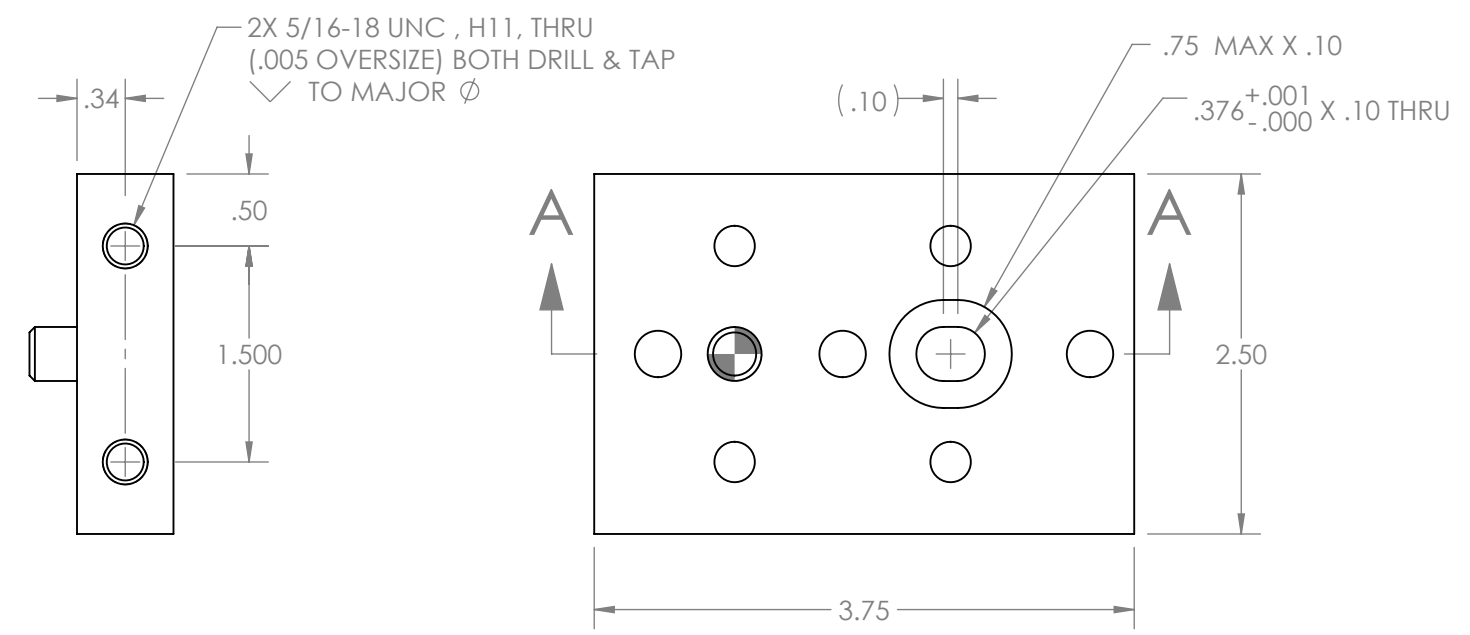
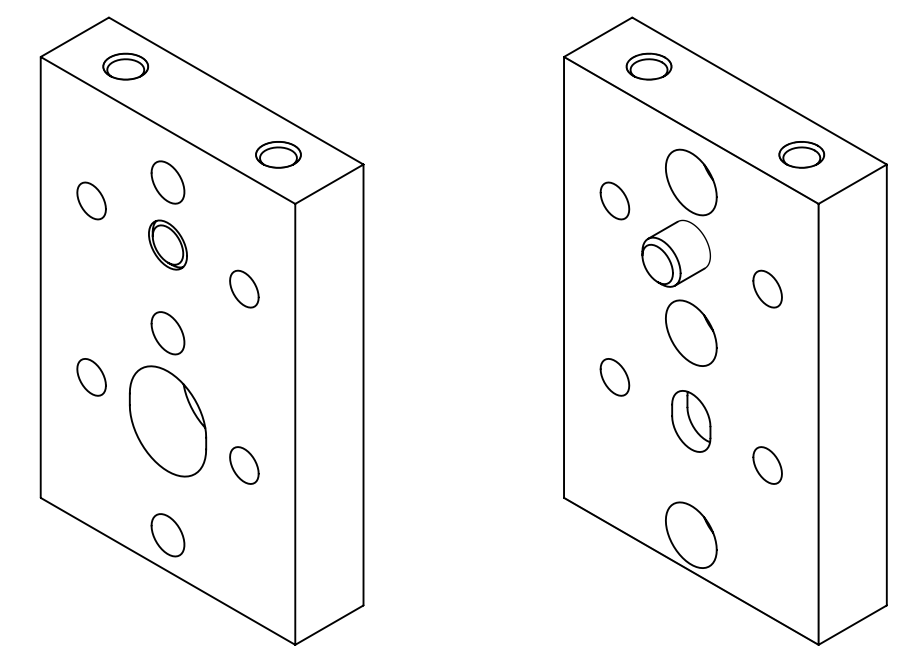
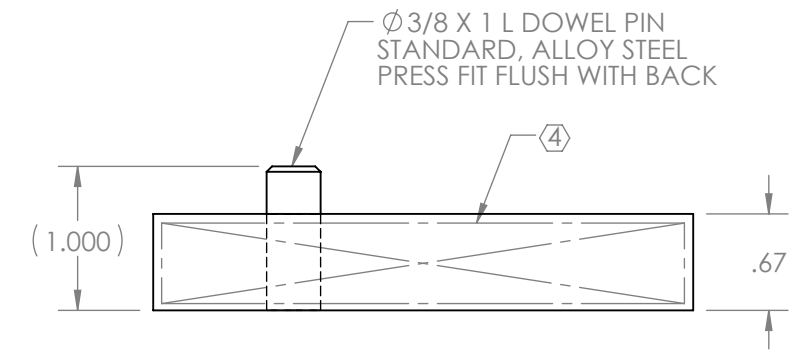
8 7 6 5 4 3 2 1

REV.	DATE	DCN #	DRAWING TREE #
v1	12 MAR 2013	-	-
v2	18 MAR 2013	-	-
-	-	-	-

NOTES CONTINUED:

④ SCRIBE, ENGRAVE (A VIBRATORY TOOL MAY BE USED), LASER MARK OR MECHANICALLY STAMP (NO INKS OR DYES) DRAWING PART NUMBER, REVISION (AND VARIANT OR "TYPE" IF APPLICABLE) ON NOTED SURFACE OF PART FOLLOWED ON THE NEXT LINE WITH A THREE DIGIT SERIAL NUMBER. SERIAL NUMBERS START AT 001 FOR THE FIRST ARTICLE AND PROCEED CONSECUTIVELY. USE MINIMUM 0.12" HIGH CHARACTERS, UNLESS THE SIZE OF THE PART DICTATES SMALLER CHARACTERS. EXAMPLE: DXXXXXX-VY, ~~TYPE-XX~~, S/N XXX

5. WEIGHT: 0.57 LB.



SECTION A-A

NOTES AND TOLERANCES: (UNLESS OTHERWISE SPECIFIED)				LIGO CALIFORNIA INSTITUTE OF TECHNOLOGY MASSACHUSETTS INSTITUTE OF TECHNOLOGY		PART NAME	
DIMENSIONS ARE IN INCHES				ADVANCED LIGO		αLIGO PCAL TOOLING, PERISCOPE STABILIZING MOUNT	
TOLERANCES: .XX ± .01 .XXX ± .005				SUB-SYSTEM AOS		DESIGNER R. SAVAGE	DATE 11 MAR 2013
ANGULAR ± 0.5°				NEXT ASSY D1300245		DRAFTER C. CONLEY	DATE 12 MAR 2013
MATERIAL 6061-T6 Al	FINISH 250 μinch Ra MAX	SCALE: NONE		PROJECTION:		SIZE DWG. NO. B D1300235	REV. v2
							SHEET 1 OF 1

D1300235 αLIGO Pcal Tooling, Periscope Stabilizing Mount, PART PDM REV: X-016, DRAWING PDM REV: X-008

8 7 6 5 4 3 2 1