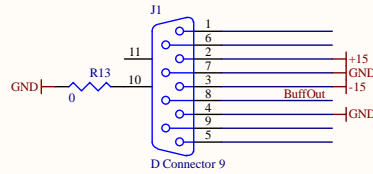
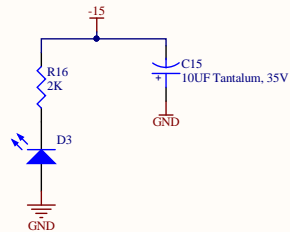
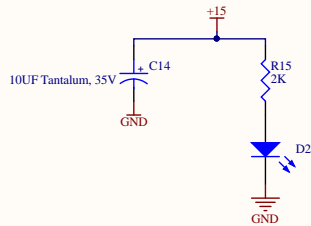
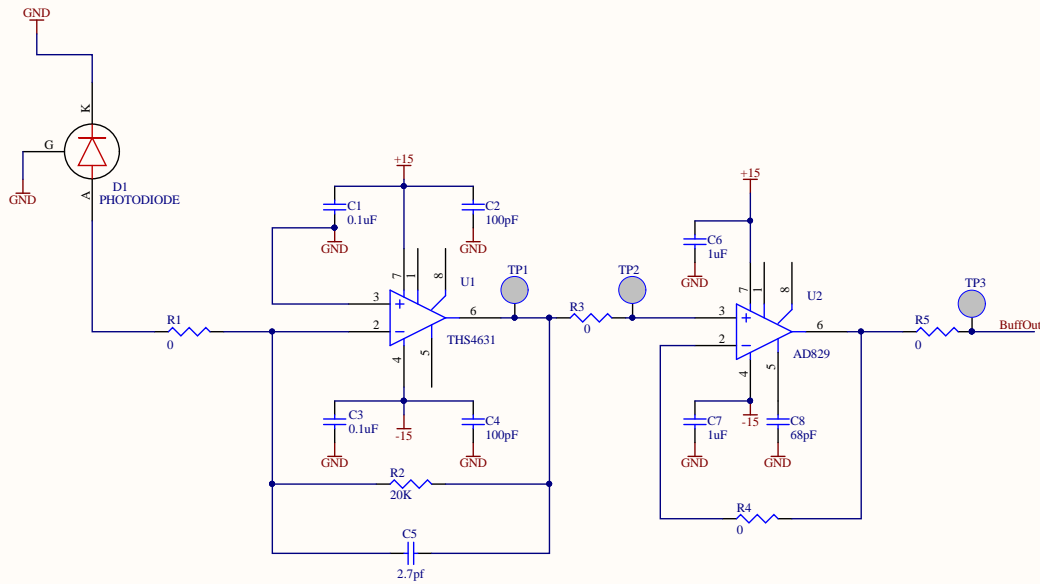


Photodiode Part Number: 30665GH

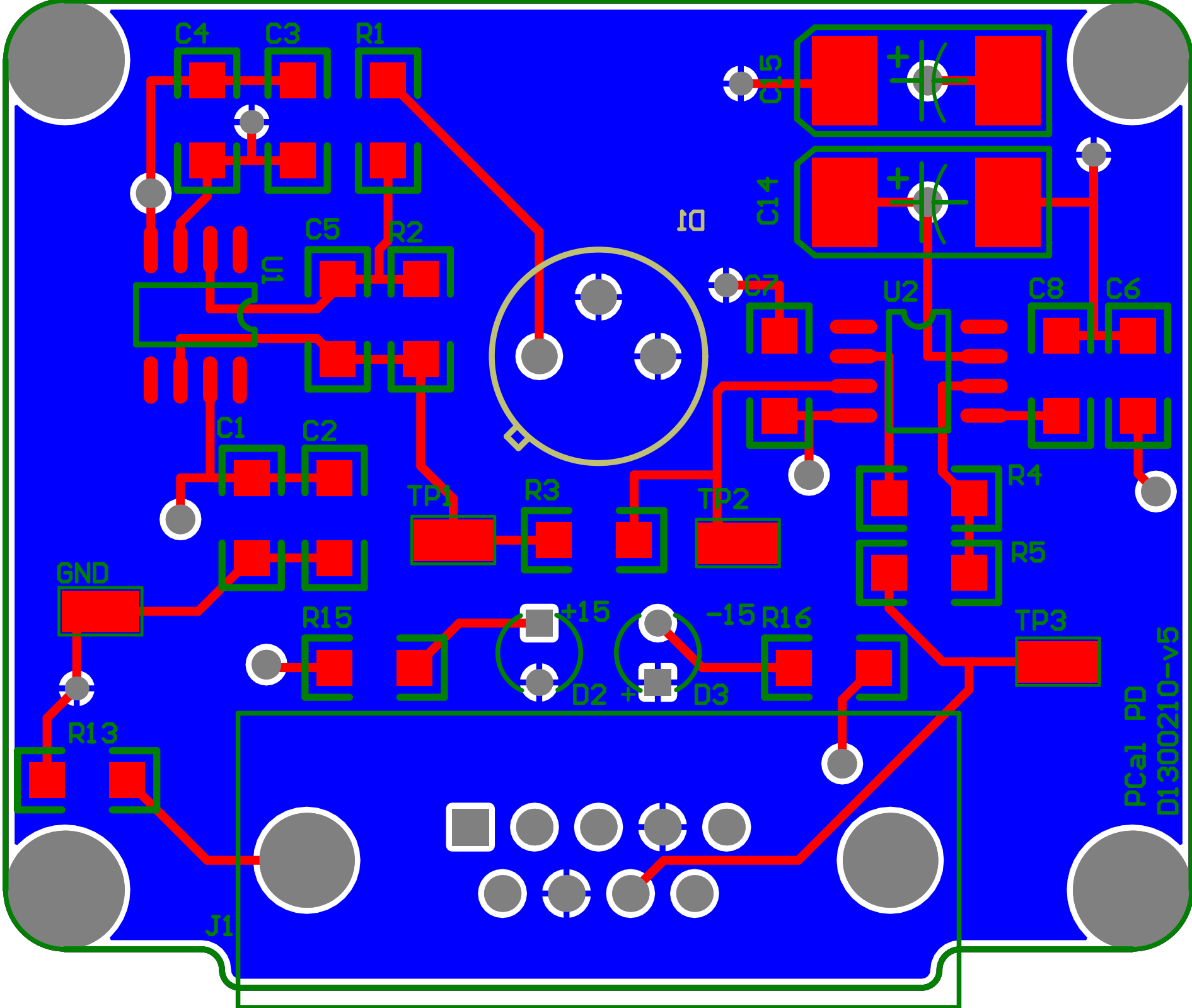


rev. v3 changes U1 & U2 to AD829s for high slew rate.

rev. v4 adds R17, R18, R19, for bias current balancing, and C16, and C17 to the pcb for OpAmp compensation.

rev. v5 Removed U2 and U4. Resistor R5 added on output of U2.

Title PCal Photodiode Head			
Size: B	DCC Number: D1300210	Ligo Project California Institute of Technology Massachusetts Institute of Technology	
Drawn by: Ben Abbott	Date: 11/2/2018	Revision: v5	Cannot open file C:\Restored\Ben\miscellany\ligo\go_t.jpg
File: C:\Users\marc.pirello\Desktop\D1300210-v5\PCalPDv5.SchDoc		Time: 1:11:29 PM	Sheet 1 of 1



PCa1_PD
D1300210-v5

ID

J1

C4

C3

R1

C15

+

C1

C5

R2

C14

+

IC

D7

U2

C8

C6

C1

C2

TP1

R3

TP2

R4

R5

GND

+15

-15

R16

TP3

R13

R15

D2

D3

