

1991



ANNUAL BOOK OF ASTM STANDARDS

SECTION

3

Metals Test Methods and
Analytical Procedures



VOLUME

03.02 Wear and Erosion; Metal Corrosion

Revision issued annually



Editorial Staff

Director, Editorial Services:

Roberta A. Storer

Manager, Standards Publications:

Joan L. Cornillot

Susan P. Milligan

Senior Indexer:

H. Joel Shupak

Editors:

Susan P. Canning

Paula C. Fazio

Donna Fisher

Elizabeth L. Gutman

Catherine T. Hsia

Sharon L. Kauffman

Joanne Kramer

Marianne Lane

Christine M. Leinweber

Patricia A. McGee

Editorial Assistants:

Vernice A. Lane

Todd J. Sandler

Richard F. Wilhelm

Library of Congress Catalog Card Number: 83-641658

ISBN 0-8031-1668-3 (set)

ISBN 0-8031-1600-4 (section)

ISBN 0-8031-1602-0 (volume)

Copyright © 1991 AMERICAN SOCIETY FOR TESTING AND MATERIALS, Philadelphia, PA. Prior editions copyrighted 1990 and earlier, by the American Society for Testing and Materials. All rights reserved. This material may not be reproduced or copied, in whole or in part, in any printed, mechanical, electronic, film, or other distribution and storage media, without the written consent of the publisher.

Photocopy Rights

Authorization to photocopy items for internal or personal use, or the internal or personal use of specific clients, is granted by the AMERICAN SOCIETY FOR TESTING AND MATERIALS for users registered with the Copyright Clearance Center (CCC) Transactional Reporting Service, provided that the base fee of \$2.50 per copy, plus \$0.50 per page is paid directly to CCC, 27 Congress St., Salem, MA 01970; Tel. (508) 744-3350. For those organizations that have been granted a photocopy license by CCC, a separate system of payment has been arranged. The fee code for users of the Transactional Reporting Service is 0-8031-1602-0/91 \$2.50 + .50.



Standard Practices for Detecting Susceptibility to Intergranular Attack in Austenitic Stainless Steels¹

This standard is issued under the fixed designation A 262; the number immediately following the designation indicates the year of original adoption or, in the case of revision, the year of last revision. A number in parentheses indicates the year of last reapproval. A superscript epsilon (ϵ) indicates an editorial change since the last revision or reapproval.

These practices have been approved for use by agencies of the Department of Defense. Consult the DoD Index of Specifications and Standards for the specific year of issue which has been adopted by the Department of Defense.

1. Scope

1.1 These practices cover the following six tests:

1.1.1 *Practice A*—Oxalic Acid Etch Test for Classification of Etch Structures of Austenitic Stainless Steels (Sections 3 to 7, inclusive),

1.1.2 *Practice B*—Ferric Sulfate-Sulfuric Acid Test for Detecting Susceptibility to Intergranular Attack in Austenitic Stainless Steels (Sections 8 to 14, inclusive),

1.1.3 *Practice C*—Nitric Acid Test for Detecting Susceptibility to Intergranular Attack in Austenitic Stainless Steels (Sections 15 to 21, inclusive),

1.1.4 *Practice D*—Nitric-Hydrofluoric Acid Test for Detecting Susceptibility to Intergranular Attack in Molybdenum-Bearing Austenitic Stainless Steels (Sections 22 to 28, inclusive), and

1.1.5 *Practice E*—Copper-Copper Sulfate-Sulfuric Acid Test for Detecting Susceptibility to Intergranular Attack in Austenitic Stainless Steels (Sections 29 to 38, inclusive).

1.1.6 *Practice F*—Copper-Copper Sulfate-50 % Sulfuric Acid Test for Detecting Susceptibility to Intergranular Attack in Molybdenum-Bearing Cast Austenitic Stainless Steels (Sections 39 to 45, inclusive).

1.2 The following factors govern the application of these practices:

1.2.1 Susceptibility to intergranular attack associated with the precipitation of chromium carbides is readily detected in all six tests.

1.2.2 Sigma phase in wrought chromium-nickel-molybdenum steels, which may or may not be visible in the microstructure, can result in high corrosion rates only in nitric acid.

1.2.3 Sigma phase in titanium or columbium stabilized alloys and cast molybdenum bearing stainless alloys, which may or may not be visible in the microstructure, can result in high corrosion rates in both the nitric acid and ferric sulfate-sulfuric acid solutions.

1.3 The oxalic acid etch test is a rapid method of identifying, by simple etching, those specimens of certain stainless steel grades which are essentially free of susceptibility to intergranular attack associated with chromium carbide precipitates. These specimens will have low corro-

sion rates in certain corrosion tests and therefore can be eliminated (screened) from testing as "acceptable."

1.4 The ferric sulfate-sulfuric acid test, the copper-copper sulfate-50 % sulfuric acid test, the nitric acid test, and the nitric-hydrofluoric acid test are based on weight loss determinations and, thus, provide a quantitative measure of the relative performance of specimens evaluated. In contrast, the copper-copper sulfate-16 % sulfuric acid test is based on visual examination of bend specimens and, therefore, classifies the specimens only as acceptable or non-acceptable.

1.5 In most cases either the 24-h copper-copper sulfate-16 % sulfuric acid test or the 120-h ferric sulfate-sulfuric acid test, combined with the oxalic acid etch test, will provide the required information in the shortest time. All stainless grades listed in the accompanying table may be evaluated in these combinations of screening and corrosion tests, except those specimens of molybdenum-bearing grades (for example 316, 316L, 317, and 317L), which represent steel intended for use in nitric acid environments.

1.6 For AISI Grades 316, 316L, 317, and 317L only, the nitric-hydrofluoric acid test may be used to provide test results in 4 h.

1.7 The 240-h nitric acid test must be applied to stabilized and molybdenum-bearing grades intended for service in nitric acid and to all stainless steel grades which might be subject to end grain corrosion in nitric acid service.

1.8 Only those stainless steel grades are listed in Table 1 for which data on the application of the oxalic acid etch test and on their performance in various quantitative evaluation tests are available.

1.9 Extensive test results on various types of stainless steels evaluated by these practices have been published in Ref (10).²

1.10 The values stated in inch-pound units are to be regarded as standard. The SI equivalents are in parentheses and may be approximate.

1.11 *This standard does not purport to address all of the safety problems associated with its use. It is the responsibility of the user of this standard to establish appropriate safety and health practices and determine the applicability of regulatory limitations prior to use.* (Specific precautionary statements are given in 5.6, 11.1.1, 11.1.9, 25.1.4.1, and 42.1.)

¹ These practices are under the jurisdiction of ASTM Committee A-1 on Steel, Stainless Steel and Related Alloys and are the direct responsibility of Subcommittee A01.14 on Methods of Corrosion Testing.

Current edition approved Dec. 28, 1990. Published February 1991. Originally published as A 262 – 43 T. Last previous edition A 262 – 86.

² The boldface numbers in parentheses refer to the list of references found at the end of these practices.

TABLE 1 Application of Evaluation Tests for Detecting Susceptibility to Intergranular Attack in Austenitic Stainless Steels

NOTE 1—For each corrosion test, the types of susceptibility to intergranular attack detected are given along with the grades of stainless steels in which they may be found. These lists may contain grades of steels in addition to those given in the rectangles. In such cases, the acid corrosion test is applicable, but not the oxalic acid etch test.

NOTE 2—The oxalic acid etch test may be applied to the grades of stainless steels listed in the rectangles when used in connection with the test indicated by the arrow.

OXALIC ACID ETCH TEST				
AISI ^A : 304, 304L ACI ^B : CF-3, CF-8	AISI: 304, 304L, 316, 316L, 317, 317L ACI: CF-3, CF-8, CF-3M, CF-8M	AISI: 316, 316L, 317, 317L	AISI: 201, 202, 301, 304, 304L, 316, 316L, 317, 317L, 321, 347	ACI: CF-3M, CF-8M
Nitric Acid Test ^C (240 h in boiling solution)	Ferric Sulfate-Sulfuric Acid Test (120 h in boiling solution)	Nitric-Hydrofluoric Acid Test (4 h at 70°C)	Copper-Copper Sulfate-Sulfuric Acid Test (24 h in boiling solution)	Copper-Copper Sulfate-50 % Sulfuric Acid Testing Boiling Solution
Chromium carbide in: 304, 304L, CF-3, CF-8 Chromium carbide and sigma phase in: ^D 316, 316L, 317, 317L, 321, 347, CF-3M, CF-8M End-grain in: all grades	Chromium carbide in: 304, 304L, 316, 316L, 317, 317L, CF-3, CF-8 Chromium carbide and sigma phase in: 321, CF-3M, CF-8M ^E	Chromium carbide in: 316, 316L, 316LN, 316N, 317, 317L	Chromium carbide in: 201, 202, 301, 304, 304L, 316, 316L, 317, 317L, 321, 347	Chromium carbide in: CF-3M, CF-8M

^A AISI: American Iron and Steel Institute designations for austenitic stainless steels.

^B ACI: Alloy Casting Institute designations.

^C The nitric acid test may be also applied to AISI 309, 310, 348, and AISI 410, 430, 446, and ACI CN-7M.

^D Must be tested in nitric acid test when destined for service in nitric acid.

^E To date, no data have been published on the effect of sigma phase on corrosion of AISI 347 in this test.

2. Referenced Document

2.1 ASTM Standard:

A 370 Test Methods and Definitions for Mechanical Testing of Steel Products³

PRACTICE A—OXALIC ACID ETCH TEST FOR CLASSIFICATION OF ETCH STRUCTURES OF AUSTENITIC STAINLESS STEELS (1)

3. Scope

3.1 The oxalic acid etch test is used for acceptance of material but not for rejection of material. This may be used in connection with other evaluation tests to provide a rapid method for identifying those specimens which are certain to be free of susceptibility to rapid intergranular attack in these other tests. Such specimens have low corrosion rates in the various hot acid tests, requiring from 4 to 240 h of exposure. These specimens are identified by means of their etch structures which are classified according to the following criteria:

³ Annual Book of ASTM Standards, Vols 01.01 to 01.05.

3.2 The oxalic acid etch test may be used to screen specimens intended for testing in Practice B—Ferric Sulfate-Sulfuric Acid Test, Practice C—Nitric Acid Test, Practice D—Nitric-Hydrofluoric Acid Test, Practice E—Copper-Copper Sulfate-16 % Sulfuric Acid Test, and Practice F—Copper-Copper Sulfate-50 % Sulfuric Acid Test.

3.2.1 Each practice contains a table showing which classifications of etch structures on a given stainless steel grade are equivalent to acceptable, or possibly nonacceptable performance in that particular test. Specimens having acceptable etch structures need not be subjected to the hot acid test. Specimens having nonacceptable etch structures must be tested in the specified hot acid solution.

3.3 The grades of stainless steels and the hot acid tests for which the oxalic acid etch test is applicable are listed in Table 2.

3.4 Extra low carbon grades, and stabilized grades, such as 304L, 316L, 317L, 321, and 347, are tested after sensitizing heat treatments at 1200 to 1250°F (650 to 675°C), which is the range of maximum carbide precipitation. These sensitizing treatments must be applied before the specimens are submitted to the oxalic acid etch test. The most commonly used sensitizing treatment is 1 h at 1250°F.

TABLE 2 Applicability of Etch Test

	AISI Grade No.	ACI Grade No.
Practice B—Ferric Sulfate-Sulfuric Acid Test	304, 304L, 316, 316L, 317, 317L	CF-3, CF-8, CF-3M, CF-8M
Practice C—Nitric Acid Test	304, 304L	CF-8, CF-3
Practice D—Nitric-Hydrofluoric Acid Test	316, 316L, 317, 317L	...
Practice E—Copper-Copper Sulfate-16 % Sulfuric Acid Test	201, 202, 301, 304, 304L, 316, 316L, 317, 317L, 321, 347	...
Practice F—Copper-Copper Sulfate-50 % Sulfuric Acid Test	...	CF-8M, CF-3M

4. Apparatus

4.1 *Source of Direct Current*—Battery, generator, or rectifier capable of supplying about 15 V and 20 A.

4.2 *Ammeter*—Range 0 to 30 A (Note 1).

4.3 *Variable Resistance* (Note 1).

4.4 *Cathode*—A cylindrical piece of stainless steel or, preferably, a 1-qt (0.946-L) stainless steel beaker.

4.5 *Large Electric Clamp*—To hold specimen to be etched.

4.6 *Metallurgical Microscope*—For examination of etched microstructures at 250 to 500 diameters.

4.7 *Electrodes of the Etching Cell*—The specimen to be etched is made the anode, and a stainless steel beaker or a piece of stainless steel as large as the specimen to be etched is made the cathode.

4.8 *Electrolyte*—Oxalic acid, ($\text{H}_2\text{C}_2\text{O}_4 \cdot 2\text{H}_2\text{O}$), reagent grade, 10 weight % solution.

NOTE 1—The variable resistance and the ammeter are placed in the circuit to measure and control the current on the specimen to be etched.

5. Preparation of Test Specimens

5.1 *Cutting*—Sawing is preferred to shearing, especially on the extra-low carbon grades. Shearing cold works adjacent metal and affects the response to subsequent sensitization. Microscopical examination of an etch made on a specimen containing sheared edges, should be made on metal unaffected by shearing. A convenient specimen size is 1 by 1 in. (25 by 25 mm).

5.2 The intent is to test a specimen representing as nearly as possible the surface of the material as it will be used in service. Therefore the preferred sample is a cross section including the surface to be exposed in service. Only such surface finishing should be performed as is required to remove foreign material and obtain a standard, uniform finish as described in 5.3. For very heavy sections, specimens should be machined to represent the appropriate surface while maintaining reasonable specimen size for convenient testing. Ordinarily, removal of more material than necessary will have little influence on the test results. However, in the special case of surface carburization (sometimes encountered, for instance, in tubing or castings when lubricants or binders containing carbonaceous materials are employed) it may be possible by heavy grinding or machining to completely remove the carburized surface. Such treatment of test specimens is not permissible, except in tests undertaken to demonstrate such effects.

5.3 *Polishing*—On all types of materials, cross sectional surfaces should be polished for etching and microscopical examination. Specimens containing welds should include base plate, weld heat-affected zone, and weld metal. Scale should be removed from the area to be etched, by grinding to an 80 or 120-grit finish on a grinding belt or wheel without excessive heating, and then polishing on successively finer emery papers, No. 1, $\frac{1}{2}$, $\frac{1}{10}$, $\frac{3}{10}$, or finer. This polishing operation can be carried out in a relatively short time since all large scratches need not be removed. Whenever practical, a polished area of 1 cm^2 or more is desirable. If any cross sectional dimension is less than 1 cm, a minimum length of 1 cm should be polished. When the available length is less than 1 cm, a full cross section should be used.

5.4 *Etching Solution*—The solution used for etching is prepared by adding 100 g of reagent grade oxalic acid crystals ($\text{H}_2\text{C}_2\text{O}_4 \cdot 2\text{H}_2\text{O}$) to 900 mL of distilled water and stirring until all crystals are dissolved.

5.5 *Etching Conditions*—The polished specimen should be etched at 1 A/cm^2 for 1.5 min. To obtain the correct current density:

5.5.1 The total immersed area of the specimen to be etched should be measured in square centimetres, and

5.5.2 The variable resistance should be adjusted until the ammeter reading in amperes is equal to the total immersed area of the specimen in square centimetres.

5.6 Etching Precautions:

5.6.1 *Caution*—Etching should be carried out under a ventilated hood. Gas, which is rapidly evolved at the electrodes with some entrainment of oxalic acid, is poisonous and irritating to mucous membranes.

5.6.2 A yellow-green film is gradually formed on the cathode. This increases the resistance of the etching cell. When this occurs, the film should be removed by rinsing the inside of the stainless steel beaker (or the steel used as the cathode) with an acid such as 30 % HNO_3 .

5.6.3 The temperature of the etching solution gradually increases during etching. The temperature should be kept below 50°C by alternating two beakers. One may be cooled in tap water while the other is used for etching. The rate of heating depends on the total current (ammeter reading) passing through the cell. Therefore, the area etched should be kept as small as possible while at the same time meeting the requirements of desirable minimum area to be etched.

5.6.4 Immersion of the clamp holding the specimen in the etching solution should be avoided.

5.7 *Rinsing*—Following etching, the specimen should be thoroughly rinsed in hot water and in acetone or alcohol to avoid crystallization of oxalic acid on the etched surface during drying.

5.8 On some specimens containing molybdenum (AISI 316, 316L, 317, 317L) which are free of chromium carbide sensitization, it may be difficult to reveal the presence of step structures by electrolytic etching with oxalic acid. In such cases, an electrolyte of a 10 % solution of ammonium persulfate, $(\text{NH}_4)_2\text{S}_2\text{O}_8$, may be used in place of oxalic acid. An etch of 5 or 10 min at 1 A/cm^2 in a solution at room temperature readily develops step structures on such specimens.

6. Classification of Etch Structures

6.1 The etched surface is examined on a metallurgical microscope at 250× to 500× for wrought steels and at about 250× for cast steels.

6.2 The etched cross-sectional areas should be thoroughly examined by complete traverse from inside to outside diameters of rods and tubes, from face to face on plates, and across all zones such as weld metal, weld-affected zones, and base plates on specimens containing welds.

6.3 The etch structures are classified into the following types (Note 2):

6.3.1 *Step Structure* (Fig. 1)—Steps only between grains, no ditches at grain boundaries.

6.3.2 *Dual Structure* (Fig. 2)—Some ditches at grain boundaries in addition to steps, but no single grain com-

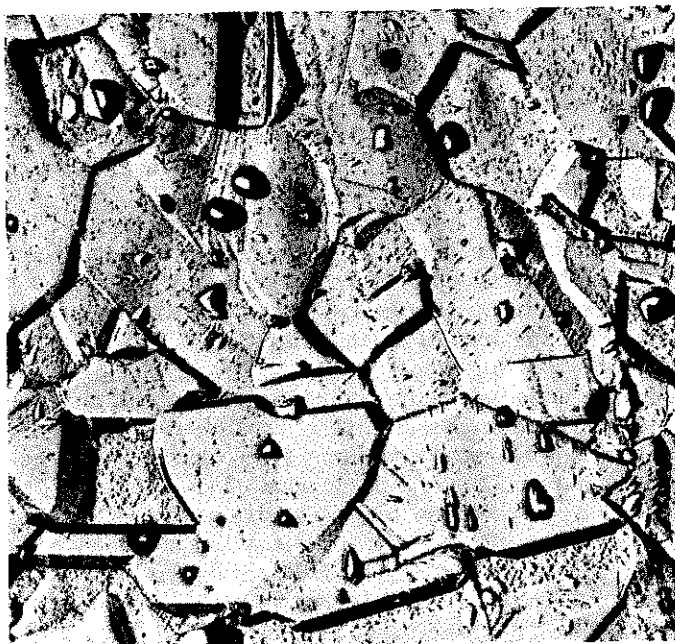


FIG. 1 Step Structure (500x) (Steps between grains, no ditches at grain boundaries)

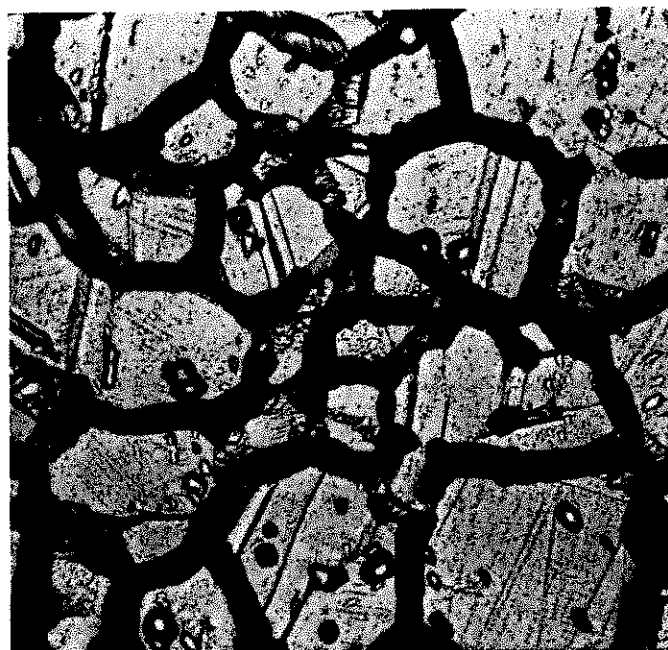


FIG. 3 Ditch Structure (500x) (One or more grains completely surrounded by ditches)

pletely surrounded by ditches.

6.3.3 *Ditch Structure* (Fig. 3)—One or more grains completely surrounded by ditches.

6.3.4 *Isolated Ferrite* (Fig. 4)—Observed in castings and welds. Steps between austenite matrix and ferrite pools.

6.3.5 *Interdendritic Ditches* (Fig. 5)—Observed in castings and welds. Deep interconnected ditches.

6.3.6 *End-Grain Pitting I* (Fig. 6)—Structure contains a few deep end-grain pits along with some shallow etch pits at

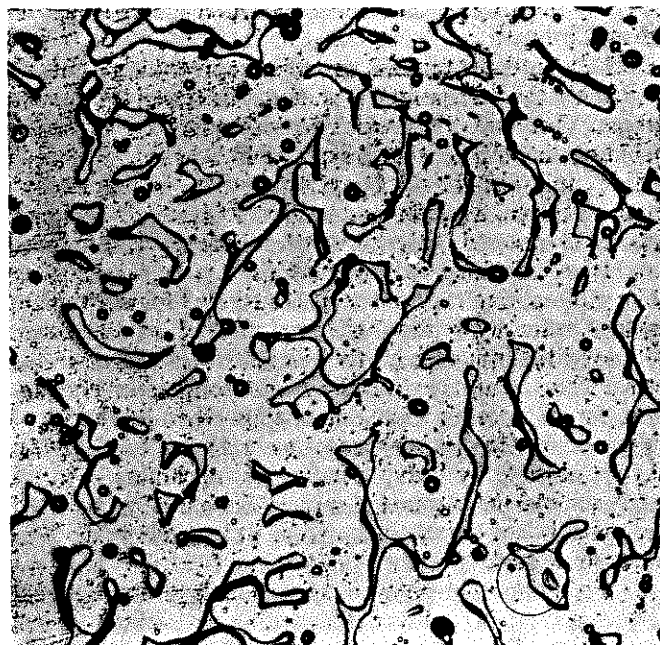


FIG. 4 Isolated Ferrite Pools (250x) (Observed in castings and welds. Steps between austenite matrix and ferrite pools)

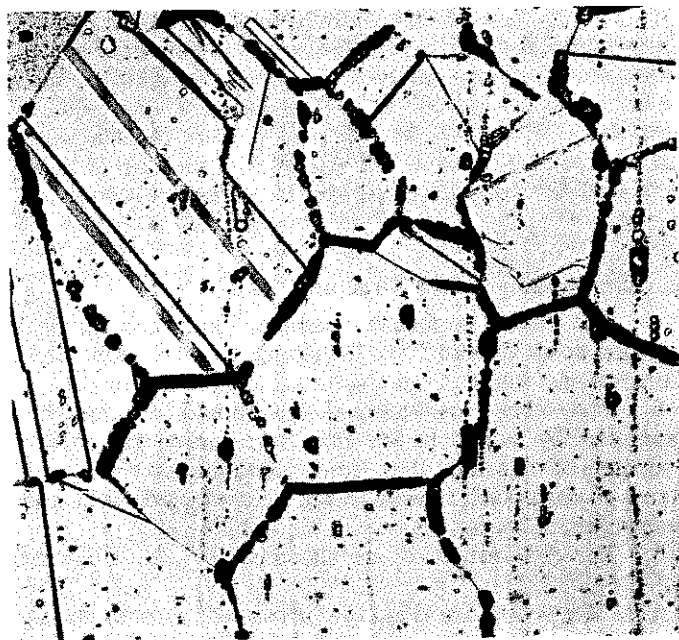


FIG. 2 Dual Structure (250x) (Some ditches at grain boundaries in addition to steps, but no one grain completely surrounded)

500x. (Of importance only when nitric acid test is used.)

6.3.7 *End-Grain Pitting II* (Fig. 7)—Structure contains numerous, deep end-grain pits at 500x. (Of importance only when nitric acid test is used.)

NOTE 2—All photomicrographs were made with specimens that were etched under standard conditions: 10 % oxalic acid, room temperature, 1.5 min at 1 A/cm².

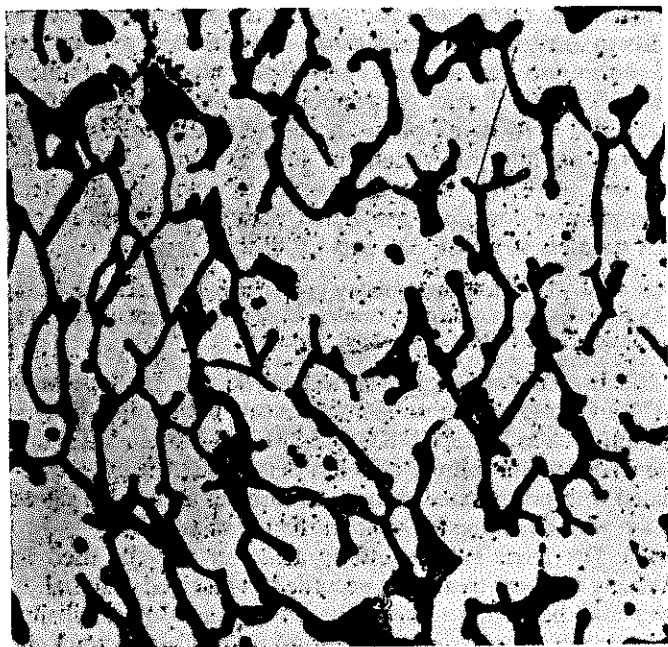
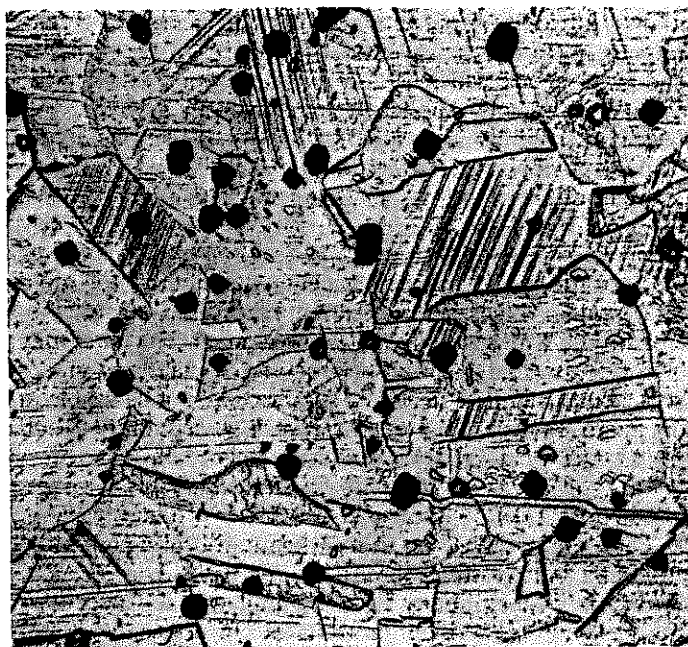
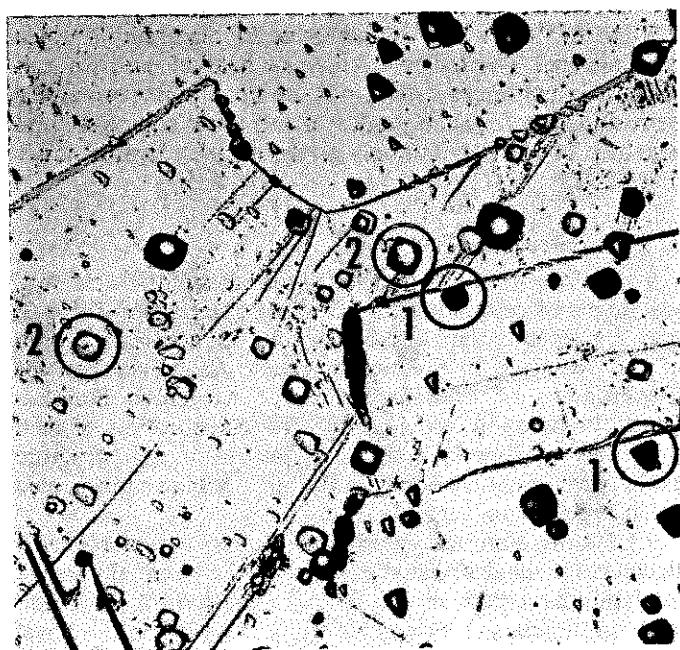


FIG. 5 Interdendritic Ditches (250x) (Observed in castings and welds. Deep interconnected ditches)



This or a greater concentration of end grain pits at 500x (using standard etching conditions) indicates that the specimen must be tested when screening is for nitric acid test.

FIG. 7 End Grain Pitting II (500x)



To differentiate between the types of pits, use a magnification of 500x and focus in the plane of etched surface. The pits which now appear completely black are end grain pits.

FIG. 6 End Grain Pitting I (500x) (A few deep end grain pits (see 1 in figure) and shallow etch pits (2))

6.4 The evaluation of etch structures containing steps only and of those showing grains completely surrounded by ditches in every field can be carried out relatively rapidly. In cases that appear to be dual structures, more extensive examination is required to determine if there are any grains

completely encircled. If an encircled grain is found, the steel should be evaluated as a ditch structure. Areas near surfaces should be examined for evidence of surface carburization.

6.4.1 On stainless steel castings (also on weld metal) the steps between grains formed by electrolytic oxalic acid etching tend to be less prominent than those on wrought materials, or are entirely absent. However, any susceptibility to intergranular attack is readily detected by pronounced ditches.

6.5 Some wrought specimens, especially from bar stock, may contain a random pattern of pits. If these pits are sharp and so deep that they appear black (Fig. 7) it is possible that the specimen may be susceptible to end grain attack in nitric acid only. Therefore, even though the grain boundaries all have step structures, specimens having as much or more end grain pitting than that shown in Fig. 7 cannot be safely assumed to have low nitric acid rates and should be subjected to the nitric acid test whenever it is specified. Such sharp, deep pits should not be confused with the shallow pits shown in Figs. 1 and 6.

7. Use of Etch Structure Classifications

7.1 The use of these classifications depends on the hot acid corrosion test for which stainless steel specimens are being screened by etching in oxalic acid and is described in each of the practices. Important characteristics of each of these tests are described below.

7.2 *Practice B—Ferric Sulfate-Sulfuric Acid Test* is a 120-h test in boiling 50 % solution that detects susceptibility to intergranular attack associated primarily with chromium carbide precipitate. It does not detect susceptibility associated with sigma phase in wrought chromium-nickel-molybdenum stainless steels (316, 316L, 317, 317L) which is

known to lead to rapid intergranular attack only in certain nitric acid environments. It does not detect susceptibility to end grain attack which is also found only in certain nitric acid environments. The ferric sulfate-sulfuric acid test does reveal susceptibility associated with a sigma-like phase constituent in stabilized stainless steels, AISI 321, 347, and in cast chromium-nickel-molybdenum stainless steels (CF-8M, CF-3M, C6-8M, and CG-3M).

7.3 Practice C—Nitric Acid Test is a 240-h test in boiling, 65 % nitric acid which detects susceptibility to rapid intergranular attack associated with chromium carbide precipitate and with sigma-like phase precipitate. The latter may be formed in molybdenum-bearing and in stabilized grades of austenitic stainless steels and may or may not be visible in the microstructure. This test also reveals susceptibility to end grain attack in all grades of stainless steels.

7.4 Practice D—Nitric-Hydrofluoric Acid Test is a 4-h test in a solution of 10 % nitric acid and 3 % hydrofluoric acid at 70°C. It is applicable only to molybdenum-bearing grades of austenitic stainless steels (AISI 316, 316L, 317, 317L) and detects only susceptibility to intergranular attack associated with chromium carbide precipitates. It does not detect susceptibility to intergranular attack associated with sigma phase or end grain corrosion, which, so far, are known to lead to rapid intergranular attack only in certain nitric acid environments.

7.5 Practice E—Copper-Copper Sulfate-16 % Sulfuric Acid Test is a 24-h test in a boiling solution containing 16 % sulfuric acid and 6 % copper sulfate with the test specimen embedded in metallic copper shot or grindings, which detects susceptibility to intergranular attack associated with the precipitation of chromium-rich carbides. It does not detect susceptibility to intergranular attack associated with sigma phase, or end-grain corrosion, both of which have been observed to date only in certain nitric acid environments.

7.6 Practice F—Copper-Copper Sulfate-50 % Sulfuric Acid Test is a 120-h test in a boiling solution which contains 50 % sulfuric acid, copper sulfate, and metallic copper and which detects susceptibility to intergranular attack associated with the precipitation of chromium-rich carbides. It does not detect susceptibility to attack associated with sigma phase.

PRACTICE B—FERRIC SULFATE-SULFURIC ACID TEST FOR DETECTING SUSCEPTIBILITY TO INTERGRANULAR ATTACK IN AUSTENITIC STAINLESS STEELS (2)

8. Scope

8.1 This practice describes the procedure for conducting the boiling, 120-h ferric sulfate-50 % sulfuric acid test (Note 3) which measures the susceptibility of stainless steels to intergranular attack. The presence or absence of intergranular attack in this test is not necessarily a measure of the performance of the material in other corrosive environments. The test does not provide a basis for predicting resistance to forms of corrosion other than intergranular, such as general corrosion, pitting, or stress-corrosion cracking.

NOTE 3—See Practice A for information on the most appropriate of the several test methods available for the evaluation of specific grades of stainless steel.

8.1.1 The ferric sulfate-sulfuric acid test detects susceptibility to intergranular attack associated with the precipitation of chromium carbides in unstabilized austenitic stainless steels. It does not detect susceptibility to intergranular attack associated with sigma phase in wrought austenitic stainless steels containing molybdenum, such as Types 316, 316L, 317, and 317L. The ferric sulfate-sulfuric acid test will detect intergranular corrosion associated with sigma phase in the cast stainless steels CF-3M and CF-8M.

NOTE 4—To detect susceptibility to intergranular attack associated with sigma phase in austenitic stainless steels containing molybdenum, the nitric acid test, Practice C, should be used.

8.2 In stabilized stainless steel, Type 321 (and perhaps 347) and cast austenitic stainless steels containing molybdenum such as Types CF-8M, CF-3M, CG-8M, and CG-3M, the ferric sulfate-sulfuric acid test detects susceptibility associated with precipitated chromium carbides and with a sigma phase which may be invisible in the microstructure.

8.3 The ferric sulfate-sulfuric acid test may be used to evaluate the heat treatment accorded as-received material. It may also be used to check the effectiveness of stabilizing columbium or titanium additions and of reductions in carbon content in preventing susceptibility to rapid intergranular attack. It may be applied to wrought products (including tubes), castings, and weld metal.

8.4 Specimens of extra low carbon and stabilized grades are tested after sensitizing heat treatments at 1200 to 1250°F (650 to 675°C), which is the range of maximum carbide precipitation. The length of time of heating used for this sensitizing treatment determines the maximum permissible corrosion rate for such grades in the ferric sulfate-sulfuric acid test. The most commonly used sensitizing treatment is 1 h at 1250°F.

9. Rapid Screening Test

9.1 Before testing in the ferric sulfate sulfuric acid test, specimens of certain grades of stainless steels (see Table 3) may be given a rapid screening test in accordance with procedures given in Practice A, Oxalic Acid Etch Test for Classification of Etch Structures of Austenitic Stainless Steels. Preparation, etching, and the classification of etch structures are described therein. The use of etch structure evaluations in connection with the ferric sulfate-sulfuric acid test is specified in Table 3.

9.1.1 Corrosion test specimens having acceptable etch structures in the oxalic acid etch test will be essentially free of intergranular attack in the ferric sulfate-sulfuric acid test. Such specimens are acceptable without testing in the ferric sulfate-sulfuric acid test. All specimens having nonacceptable etch structures must be tested in the ferric sulfate-sulfuric acid test.

10. Apparatus

10.1 The apparatus (Note 6) is illustrated in Fig. 8.

10.1.1 A four-bulb Allihn or Soxhlet condenser with a 45/50 ground glass joint. Overall length: about 13 in. (330 mm), condensing section, 9½ in. (241 mm).

10.1.2 A 1-L Erlenmeyer flask with a 45/50 ground glass joint. The ground glass opening is somewhat over 1½ in. (38 mm) wide.

TABLE 3 Use of Etch Structure Classifications from the Oxalic Acid Etch Test with Ferric Sulfate-Sulfuric Acid Test

NOTE—Grades AISI 321 and 347 cannot be screened because these grades may contain a type of sigma phase which is not visible in the etch structure but which may cause rapid corrosion in the ferric sulfate-sulfuric acid test.

Grade	Acceptable Etch Structures	Nonacceptable Etch Structures ^A
AISI 304	Step, Dual, End Grain, I & II	Ditch
AISI 304L	Step, Dual, End Grain, I & II	Ditch
AISI 316	Step, Dual, End Grain, I & II	Ditch
AISI 316L	Step, Dual, End Grain, I & II	Ditch
AISI 317	Step, Dual, End Grain, I & II	Ditch
AISI 317L	Step, Dual, End Grain, I & II	Ditch
AISI 321	None	...
ACI CF-3	Step, Dual, Isolated Ferrite Pools	Ditch, Interdendritic Ditches
ACI CF-8	Step, Dual, Isolated Ferrite Pools	Ditch, Interdendritic Ditches
ACI CF-3M	Step, Dual, Isolated Ferrite Pools	Ditch, Interdendritic Ditches
ACI CF-8M	Step, Dual, Isolated Ferrite Pools	Ditch, Interdendritic Ditches

^A Specimens having these structures must be tested in the ferric sulfate-sulfuric acid test.

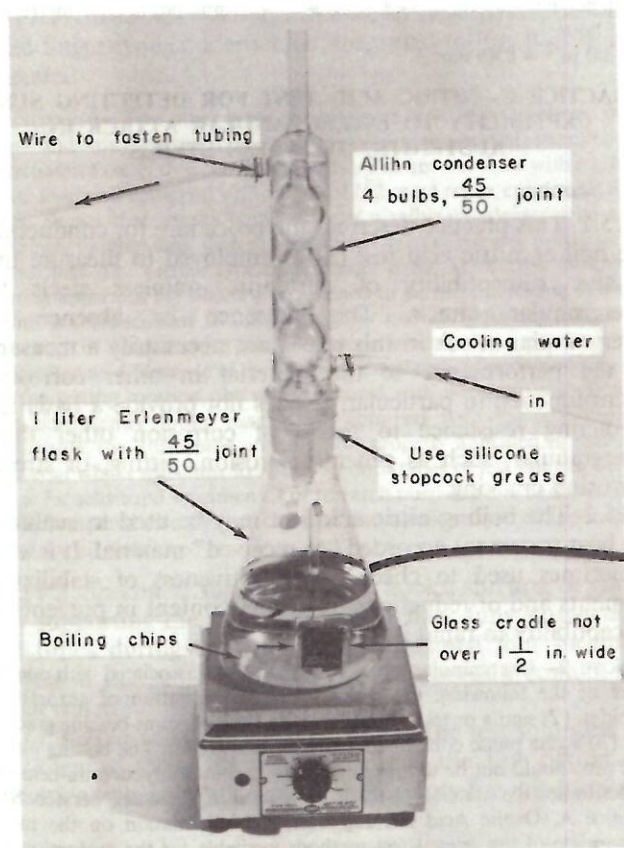


FIG. 8 Apparatus for Ferric Sulfate-Sulfuric Acid Test

10.1.3 The glass cradle (Note 5) can be supplied by a glass-blowing shop. To pass through the ground glass joint on the Erlenmeyer flask, the width of the cradle should not exceed 1 1/2 in., and the front-to-back distance must be such that the cradle will fit the 1 1/3-in. (34-mm) diameter opening. It should have three or four holes to increase circulation of the testing solution around the specimen.

NOTE 5—Other equivalent means of specimen support, such as glass hooks or stirrups, may also be used.

10.1.4 Boiling chips must be used to prevent bumping.

10.1.5 A silicone grease⁴ is recommended for the ground glass joint.

10.1.6 During testing, there is some deposition of iron oxides on the upper part of the Erlenmeyer flask. This can be readily removed, after test completion, by boiling a solution of 10 % hydrochloric acid in the flask.

10.1.7 A device such as an electrically heated hot plate which provides heat for continuous boiling of the solution.

10.1.8 An analytical balance capable of weighing to the nearest 0.001 g.

NOTE 6—No substitutions for this equipment may be used. The cold-finger type of condenser with standard Erlenmeyer flasks may not be used.

11. Ferric Sulfate-Sulfuric Acid Test Solution

11.1 Prepare 600 mL of 50 % (49.4 to 50.9 %) solution as follows:

11.1.1 **Caution**—Protect the eyes and use rubber gloves for handling acid. Place the test flask under a hood.

11.1.2 First, measure 400.0 mL of distilled water in a 500-mL graduate and pour into the Erlenmeyer flask.

11.1.3 Then measure 236.0 mL of reagent grade sulfuric acid of a concentration which must be in the range from 95.0 to 98.0 % by weight in a 250-mL graduate. Add the acid slowly to the water in the Erlenmeyer flask to avoid boiling by the heat evolved.

NOTE 7—Loss of vapor results in concentration of the acid.

11.1.4 Weigh 25 g of reagent grade ferric sulfate (contains about 75 % $\text{Fe}_2(\text{SO}_4)_3$) and add to the sulfuric acid solution. A trip balance may be used.

11.1.5 Drop boiling chips into the flask.

11.1.6 Lubricate ground glass joint with silicone grease.

11.1.7 Cover flask with condenser and circulate cooling water.

11.1.8 Boil solution until all ferric sulfate is dissolved (see Note 7).

11.1.9 **Caution**—It has been reported that violent boiling resulting in acid spills can occur. It is important to ensure that the concentration of acid does not become more concentrated and that an adequate number of boiling chips (which are resistant to attack by the test solution) are present.⁵

12. Preparation of Test Specimens

12.1 A specimen having a total surface area of 5 to 20 cm^2 is recommended. Specimens containing welds should be cut so that no more than 1/2-in. (13-mm) width of base metal is included on either side of the weld.

12.2 The intent is to test a specimen representing as nearly as possible the surface of the material as used in service. Only such surface finishing should be performed as is required to remove foreign material and obtain a standard, uniform finish as specified. For very heavy sections, specimens should be machined to represent the appropriate surface while maintaining reasonable specimen size for

⁴ Dow Corning Stopcock Grease has been found satisfactory for this purpose.

⁵ Amphoteric alundum granules, Hengar Granules, from the Hengar Co., Philadelphia, PA have been found satisfactory for this purpose.

convenience in testing. Ordinarily, removal of more material than necessary will have little influence on the test results. However, in the special case of surface carburization (sometimes encountered, for instance, in tubing or castings when lubricants or binders containing carbonaceous materials are employed) it may be possible by heavy grinding or machining to remove the carburized layer completely. Such treatment of test specimens is not permissible, except in tests undertaken to demonstrate such surface effects.

12.3 When specimens are cut by shearing, the sheared edges should be refinished by machining or grinding prior to testing.

12.4 All surfaces of the specimen, including edges, should be finished using No. 80 or 120 grit abrasive paper. If dry abrasive paper is used, polish slowly to avoid overheating. Sand blasting should not be used.

12.5 All traces of oxide scale formed during heat treatments must be thoroughly removed. Any scale which cannot be removed by grinding, for example, in stamped numbers, must be removed by immersing the specimen in concentrated nitric acid at about 200°F (93°C). (Residual oxide scale causes galvanic action and consequent activation in the test solution.)

12.6 The specimen should be measured including the inner surfaces of any holes and the total exposed area calculated.

12.7 The specimen should then be degreased and dried using suitable nonchlorinated agents, such as soap and acetone, and then weighed to the nearest 0.001 g.

13. Procedure

13.1 Place specimen in glass cradle and immerse in boiling solution.

13.2 Mark liquid level on flask with wax crayon to provide a check on vapor loss which would result in concentration of the acid. If there is an appreciable change in the level, the test must be repeated with fresh solution and a reground specimen.

13.3 Continue immersion of the specimen for a total of 120 h, then remove specimen, rinse in water and acetone, and dry.

13.4 Weigh specimen and subtract weight from original weight.

13.5 No intermediate weighings are usually necessary. The tests can be run without interruption for 120 h. However, if preliminary results are desired, the specimen can be removed at any time for weighing.

13.6 No changes in solution are necessary during the 120-h test periods.

13.7 Additional ferric sulfate inhibitor may have to be added during the test if the corrosion rate is extraordinarily high as evidenced by a change in the color of the solution. More ferric sulfate must be added if the total weight loss of all specimens exceeds 2 g. (During the test, ferric sulfate is consumed at a rate of 10 g for each 1 g of dissolved stainless steel.)

13.8 Several specimens may be tested simultaneously. The number (3 or 4) is limited only by the number of glass cradles that can be fitted into the flask.

14. Calculation and Report

14.1 The effect of the acid solution on the material shall be measured by determining the loss of weight of the specimen. The corrosion rates should be reported as inches of penetration per month (Note 8), calculated as follows:

$$\text{Inches per month} = (287 \times W)/(A \times t \times d)$$

where:

t = time of exposure, h,

A = area, cm^2 ,

W = weight loss, g, and

d = density, g/cm^3 .

for chromium-nickel steels, $d = 7.9 \text{ g/cm}^3$

for chromium-nickel-molybdenum steels, $d = 8.00 \text{ g/cm}^3$

NOTE 8—Conversion factors to other commonly used units for corrosion rates are as follows:

inches per month $\times 12$ = inches per year

inches per month $\times 1000$ = mils per month

inches per month $\times 12\ 000$ = mils per year

inches per month $\times 8350 \times \text{density}$ = milligrams per square decimetre per day

inches per month $\times 34.8 \times \text{density}$ = grams per square metre per hour

$1.00 \text{ in.}^2 = 6.45 \text{ cm}^2$

PRACTICE C—NITRIC ACID TEST FOR DETECTING SUSCEPTIBILITY TO INTERGRANULAR ATTACK IN AUSTENITIC STAINLESS STEELS

15. Scope

15.1 This practice describes the procedure for conducting the boiling nitric acid test (3) as employed to measure the relative susceptibility of austenitic stainless steels to intergranular attack. The presence or absence of intergranular attack in this test is not necessarily a measure of the performance of the material in other corrosive environments; in particular, it does not provide a basis for predicting resistance to forms of corrosion other than intergranular, such as general corrosion, pitting, or stress-corrosion cracking.

15.2 The boiling nitric acid test may be used to evaluate the heat treatment accorded "as-received" material. It is also sometimes used to check the effectiveness of stabilizing elements and of reductions in carbon content in preventing susceptibility to rapid intergranular attack.

NOTE 9—Intergranular attack in nitric acid is associated with one or more of the following: (1) intergranular precipitation of chromium carbides, (2) sigma or transition phases in molybdenum-bearing grades and (3) sigma phase constituents in stabilized grades. The boiling nitric acid test should not be used for extra low carbon molybdenum-bearing grades unless the material tested is to be used in nitric acid service. See Practice A, Oxalic Acid Etching Test, for information on the most appropriate of the several test methods available for the evaluation of specific grades of stainless steel.

15.3 Specimens of extra low carbon and stabilized grade are tested after sensitizing heat treatments at 1200 to 1250°F (650 to 675°C), which is the range of maximum carbide precipitation. The length of time used for this sensitizing treatment determines the maximum permissible corrosion rate in the nitric acid test. The most commonly used sensitizing treatment is 1 h at 1250°F.

15.4 This practice may be applied to wrought products (including tubes), castings, and weld metal of the various grades of stainless steel (Note 9).

16. Rapid Screening Test

16.1 Before testing in the nitric acid test, specimens of certain grades of stainless steel as given in Table 1 may be given a rapid screening test in accordance with procedures given in Practice A, Oxalic Acid Etch Test for Classification of Etch Structures of Austenitic Stainless Steels. The use of the etch structure evaluations in connection with the nitric acid test is specified in Table 4.

16.1.1 Corrosion test specimens having acceptable etch structures in the oxalic acid etch test will be essentially free of intergranular attack in the nitric acid test; such specimens are acceptable without testing in the nitric acid test. All specimens having nonacceptable etch structures must be tested in the nitric acid test.

17. Apparatus

17.1 *Container*—A 1-L Erlenmeyer flask equipped with a cold finger-type condenser, as illustrated in Fig. 9, is recommended.

NOTE 10—Two other types of containers have been employed in the past and may be used if agreed upon between the supplier and purchaser. One of these consists of a 1-L Erlenmeyer flask with a ground glass joint and equipped with a 30-in. (762-mm) reflux condenser; it has been shown that results obtained with a reflux condenser tend to be somewhat higher than with the cold finger-type condenser due to greater vapor loss. The second type of container is the so called multi-sample testing apparatus (4) which was designed to permit the testing of a large number of specimens simultaneously by providing for replacement of the acid in contact with the specimens several times per hour with redistilled acid. Because of the lesser accumulation of corrosion products in the testing solution, the rates obtained with the multi-sample tester are consistently lower than those obtained with the conventional apparatus; the differences are small on properly annealed or stabilized material which will show low rates in both types of test but can be very large for sensitized specimens. For research purposes or where results are to be compared directly, it is essential that the same type of apparatus be used for all tests.

17.2 *Specimen Supports*—Glass hooks, stirrups, or cradles for supporting the specimens in the flask fully immersed at all times during the test and so designed that specimens tested in the same container do not come in contact with each other.

17.3 *Heater*—A means for heating the test solutions and of keeping them boiling throughout the test period. An electrically heated hot plate is satisfactory for this purpose.

TABLE 4 Use of Etch Structure Classification from Oxalic Acid Etch Test with Nitric Acid Test

NOTE—AISI 316, 316L, 317, 317L, 347, and 321 cannot be screened because these steels may contain sigma phase not visible in the etch structure. This may cause rapid intergranular attack in the nitric acid test.

Grade	Acceptable Etch Structures	Nonacceptable Etch Structures ^A
AISI 304	Step, Dual, End Grain I	Ditch, End Grain II
AISI 304L	Step, Dual, End Grain I	Ditch, End Grain II
ACI CF-8	Step, Dual, Isolated Ferrite Pools	Ditch, Interdendritic Ditches
ACI CF-3	Step, Dual, Isolated Ferrite Pools	Ditch, Interdendritic Ditches

^A Specimens having these structures must be tested in the nitric acid test.

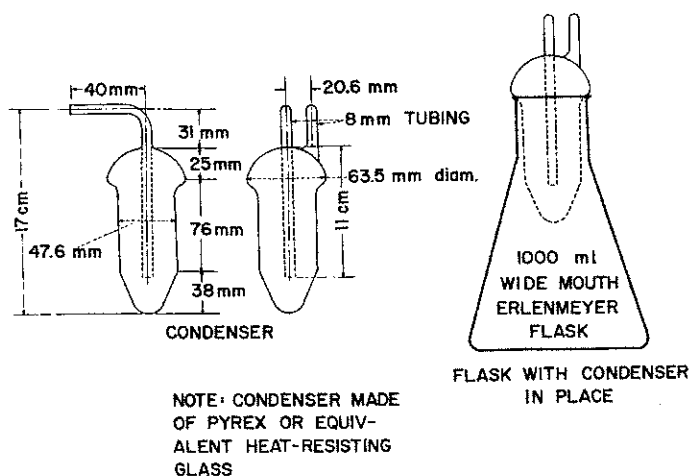


FIG. 9 Flask and Condenser for Nitric Acid Test

17.4 *Balance*—An analytical balance capable of weighing to at least the nearest 0.001 g.

18. Nitric Acid Test Solution

18.1 The test solution shall be 65 ± 0.2 weight % as nitric acid determined by analysis. This solution may be prepared by adding distilled water to concentrated nitric acid (reagent grade HNO_3 , sp gr 1.42) (Note 11) at the rate of 108 mL of distilled water per litre of concentrated nitric acid.

NOTE 11—The nitric acid used should conform to the recommended specifications for analytical reagent chemicals of the American Chemical Society (5) as follows:

Nonvolatile matter, max, %	0.0005
Sulfate (SO_4), max, %	0.0002
Arsenic, max, %	0.000003
Chlorine, max, % about	0.00007
Heavy metals, max, % about lead and iron	0.0005 0.0001

In addition, the fluorine content shall not exceed 0.0001 % and phosphate (PO_4) shall not exceed 0.00002 %.

19. Preparation of Test Specimens

19.1 The size and shape of the specimen must be considered with respect to available facilities for accurate weighing and the volume of test solution to be used. Normally, the maximum convenient weight of specimen is about 100 g. Specimens containing welds should be cut so that no more than $\frac{1}{2}$ in. (13 mm) width of base metal is included on either side of the weld. Furthermore, in the case of bar, wire, and tubular products, the proportion of the total area represented by the exposed cross section may influence the results. Cross-sectional areas in these products may be subject to end grain attack in nitric acid. The proportion of end grain in the specimen should therefore be kept low unless such surface is actually to be exposed in service involving nitric acid. When specimens of such products are being tested in research investigations, the ratio of the cross-sectional area exposed to the total area should be kept constant from test to test. For inspection tests, specimens cut from bars, wires, or tubes should be proportioned so that the areas of the exposed cross sections shall not exceed half the total exposed area of the specimen.

19.2 Special heat treatment of specimens prior to testing or the use of specimens which contain a weld may be specified.

19.3 When specimens are cut by shearing, the sheared edges should be refinished by machining or grinding prior to testing.

19.4 All surfaces of the specimen, including edges, should be finished using No. 80 or 120 grit abrasive paper. If dry abrasive paper is used, polish slowly to avoid overheating. Sandblasting should not be used.

19.5 The intent is to test a specimen representing as nearly as possible the surface of the material as it will be used in service. Only such surface machining should be performed as is required to remove foreign material and obtain a standard uniform finish as specified in 19.4. For very heavy sections, specimens should be machined to represent the appropriate surface while maintaining reasonable specimen size for convenience in testing. Ordinarily, removal of more material than necessary will have little influence on the test results. However, in the special case of surface carburization (sometimes encountered, for instance, in tubing or castings when lubricants or binders containing carbonaceous materials are employed), it may be possible by heavy grinding or machining to remove the carburized surface completely. Such treatment of test specimens is not permissible except in tests undertaken to demonstrate such surface effects.

19.6 The specimen should be measured including the inner surfaces of any holes and the total exposed area calculated.

19.7 The specimen should then be degreased and dried using suitable nonchlorinated agents, such as soap and acetone (Note 12), and then weighed to the nearest 0.001 g (see 17.4).

NOTE 12—The cleaning treatment described may be supplemented by immersing the specimen in nitric acid (for example, 20 weight % at 120 to 140°F (49 to 60°C) for 20 min), followed by rinsing, drying, and weighing. In the case of small-diameter tubular specimens which cannot be conveniently resurfaced on the inside, it is desirable to include in the preparation an immersion in boiling nitric acid (65 %) for 2 to 4 h using the same apparatus as for the actual test. The purpose of these treatments is to remove any surface contamination that may not be accomplished by the regular cleaning method and which may increase the apparent weight loss of the specimen during the early part of the test.

19.8 It is common practice to test only one specimen of each material or lot of material, as defined by those using the test for specification purposes. However, the use of at least two specimens for check purposes is recommended.

20. Procedure

20.1 Use a sufficient quantity of the nitric acid test solution to cover the specimens and to provide a volume of at least 125 mL/in.² (20 mL/cm²) of specimen surface. Normally, a volume of about 600 cm³ is used.

20.2 The best practice is to use a separate container for each test specimen.

NOTE 13—For routine evaluations, it is acceptable to test as many as three specimens in the same container provided that they all are of the same grade and all show satisfactory resistance to corrosion. If more than one of the specimens tested in the same container fail to pass the test, it is necessary to retest all specimens in separate containers, since excessive corrosion of one specimen may result in accelerated corrosion of the other specimens tested with it. Excessive corrosion may often be

detected by changes in the color of the test solution, and it may be appropriate to provide separate containers for such specimens without waiting until the end of the test period. A record should be made showing which specimens were tested together.

NOTE 14—If the multi-sample testing apparatus (see Note 10) is employed, a large number of specimens may be tested in the large container provided.

20.3 After the specimens have been placed in the acid in the container, pass cooling water through the condenser and bring the acid to a boil on the hot plate and then keep boiling throughout the test period (Note 15). After each test period, rinse the specimens with water and treat by scrubbing with rubber or a nylon brush under running water to remove any adhering corrosion products, after which they should be dried and weighed. Drying may be facilitated, if desired, by dipping the specimens in acetone after they are scrubbed.

NOTE 15—Care should be taken to prevent contamination of the testing solution, especially by fluorides, either before or during the test. Experience has shown that the presence of even small amounts of hydrofluoric acid will increase the corrosion rate in the nitric acid test. It is not permissible, for example, to conduct nitric-hydrofluoric acid tests in the same hood with nitric acid tests.

20.4 For most consistent results, the test should consist of five boiling periods of 48 h each (Note 16) with a fresh test solution being used in each period.

NOTE 16—For specification purposes, those experienced in the use of the test may, by mutual agreement, shorten the standard test to three 48-h boiling periods. However, if with this shorter test procedure the rate of attack in the third period should exceed that in either the first or second periods to some previously agreed-upon extent, then the test should be continued for a total of five periods. As an alternative, when the test is being used for inspection prior to approval of steel for shipment, a procedure may be agreed upon by the purchaser and the manufacturer whereby the material will be released for shipment following satisfactory performance in three 48-h boiling periods with final acceptance being dependent upon satisfactory performance in the longer test of five 48-h boiling periods. Also, by mutual agreement, a combination of one 48-h period and two 96-h periods (not necessarily in that order) instead of five 48-h test periods may be acceptable for routine evaluations.

21. Calculation and Report

21.1 *Calculation*—The effect of the acid on the material shall be measured by determining the loss of weight of the specimen after each test period and for the total of the test periods. Such weight-loss determinations should be made with the accuracy prescribed in 17.1.4. The corrosion rates are usually reported as inches per month (Note 17), calculated in the following rate of corrosion equation:

$$\text{Inches per month} = (287 \times W)/(A \times d \times t)$$

where:

t = time of exposure, h,

A = total surface area, cm²,

W = weight loss, g, and

d = density of the sample, g/cm³.

NOTE 17—Conversion factors to other commonly used units for corrosion rates are as follows:

inches per month \times 12 = inches per year

inches per month \times 1000 = mils per month

inches per month \times 12 000 = mils per year

inches per month \times 8350 \times density = milligrams per square decimetre per day

inches per month $\times 34.8 \times \text{density} = \text{grams per square metre per hour}$
 $1.00 \text{ in.}^2 = 6.45 \text{ cm}^2$

21.2 *Report*—Results should be reported for the individual periods, as well as the average for the three or five test periods.

PRACTICE D—NITRIC-HYDROFLUORIC ACID TEST FOR DETECTING SUSCEPTIBILITY TO INTERGRANULAR ATTACK IN MOLYBDENUM-BEARING AUSTENITIC STAINLESS STEELS (6)

22. Scope

NOTE 18—See Practice A for information on the most appropriate of the several test methods available for the evaluation of specific grades of stainless steel.

22.1 This practice describes the procedure for conducting the 70°C 4-h, 10 % nitric-3 % hydrofluoric acid test as employed to measure the susceptibility of molybdenum-bearing stainless steels to intergranular attack. The presence or absence of intergranular attack in this test is not necessarily a measure of the performance of the material in other corrosive environments. The test does not provide a basis for predicting resistance to forms of corrosion other than intergranular, such as general corrosion, pitting, or stress-corrosion cracking.

22.1.1 The 10 % nitric-3 % hydrofluoric acid test detects susceptibility to intergranular attack associated with the precipitation of chromium carbides in molybdenum-bearing stainless steels (Types 316, 317, 316L, and 317L). It does not detect susceptibility to intergranular attack associated with sigma phase in these same types of stainless steel.

22.2 The 10 % nitric-3 % hydrofluoric acid test may be used to evaluate the heat treatment accorded as-received material (Types 316 and 317 stainless steel). It may also be used to check the effectiveness of reduction in carbon content in preventing susceptibility to rapid intergranular attack (Types 316L and 317L). It may be applied to wrought products (including tubes), castings, and weld metal.

22.3 Specimens of extra low carbon grades (Types 316L and 317L) are tested after sensitizing heat treatments at 1200 to 1250°F (650 to 675°C), which is the range of maximum carbide precipitation. The length of time of heating used for this sensitizing treatment will generally be 1 or 2 h. The most commonly used sensitizing treatment is 1 h at 1250°F.

23. Summary of Practice

23.1 *Types 316 and 317 Stainless Steel*—The material submitted for evaluation is tested in each of two conditions of heat treatment: (1) as-received (commercially annealed) and (2) laboratory-annealed for 1 h at 1900 to 2000°F (1040 to 1095°C), and water quenched.

23.2 *Types 316L and 317L Stainless Steel*—The material submitted for evaluation test is tested in each of two conditions of heat treatment: (1) a sensitized specimen, and (2) a base-line specimen, which usually is the as-received (commercially annealed) specimen. If the as-received specimen does not show a step structure in the oxalic acid etch test, a portion of it must be laboratory annealed to give a step structure and that sample used as the baseline specimen (see footnote C of Table 5).

24. Rapid Screening Test

24.1 Before testing in the 10 % nitric-3 % hydrofluoric acid test, specimens of the stainless steels as given in Table 5 may be given a rapid screening test in accordance with procedures given in Practice A, Oxalic Acid Etch Test for Classification of Etch Structures of Austenitic Stainless Steels. Preparation, etching, and the classification of etch structures are described therein. The use of etch-structure evaluations in connection with the 10 % nitric-3 % hydrofluoric acid test is specified in Table 5.

24.1.1 Corrosion test specimens having acceptable etch structures in the Oxalic Acid Etch Test will be largely free of intergranular attack in the 10 % nitric-3 % hydrofluoric acid test. Such specimens are acceptable without testing in the 10 % nitric-3 % hydrofluoric acid test. All specimens having nonacceptable etch structures must be tested in the 10 % nitric-3 % hydrofluoric acid test.

25. Apparatus

25.1 The apparatus is illustrated in Fig. 9.

25.1.1 *Test Cylinders* (Note 19)—The tests are conducted in cylinders of poly(vinyl chloride) (PVC) as shown in Fig. 10. The test cylinders can be made from 12-in. (305-mm) lengths of 1¼-in. PVC pipe (¾-in. (4.76 mm) wall) by either of the following two techniques: (1) one end of each pipe length is plugged with a disk of ¾-in. PVC sheet and the disk is then heat-welded in place with PVC filler rod, or (2) one end of each pipe length is plugged by solvent-welding a 1¼-in. NPS (Schedule 80) socket-type PVC cap onto the end of the pipe.

25.1.2 *Specimen Holders* (Note 19)—The specimens may be suspended in the test solution by means of either a specimen holder (as described in this paragraph) or a TFE-fluorocarbon string through an appropriate hole drilled in one end of the specimen. The specimen holders may be made in either of two ways: (1) a 1-in. (25-mm) length of

TABLE 5 Use of Etch Structure Classifications from the Oxalic Acid Etch Test with 10 % Nitric-3 % Hydrofluoric Acid Test

Grade	Condition of Heat Treatment	Acceptable Etch Structures	Nonacceptable Etch Structures ^A
AISI 316	As-received ^B	Step, Dual, End Grain I and II	Ditch
AISI 317	As-received ^B	Step, Dual, End Grain I and II	Ditch
AISI 316L	As-received ^C	Step, End Grain I and II	Dual, Ditch
	Sensitized	Step, Dual, End Grain I and II	Ditch
AISI 317L	As-received ^C	Step, End Grain I and II	Dual, Ditch
	Sensitized	Step, Dual, End Grain I and II	Ditch

^A Specimens having these structures must be tested in 10 % nitric-3 % hydrofluoric acid test.

^B If the as-received specimen shows a ditch structure and the HNO₃-HF test is to be applied, then a duplicate specimen must be laboratory-annealed in order to produce a base-line specimen having a step structure. The laboratory-annealed specimen (step structure) along with the original as-received specimen (ditch structure) is subjected to the HNO₃-HF test. The final criterion is then the ratio of the corrosion rate for the as-received specimen to the corrosion rate for the laboratory-annealed specimen.

^C When the oxalic acid etch test is used with the HNO₃-HF test for Types 316L and 317L, the as-received specimens should show a step structure (free from precipitated carbides). If it does not, a portion of the as-received specimen must be laboratory annealed to produce a base-line specimen having a step structure and that sample used for the HNO₃-HF test. This requirement is necessary because the base-line specimen must be completely free of intergranular attack in the HNO₃-HF test in order to obtain an indicative ratio of the corrosion rate of the sensitized specimen to the corrosion rate of the base-line specimen.

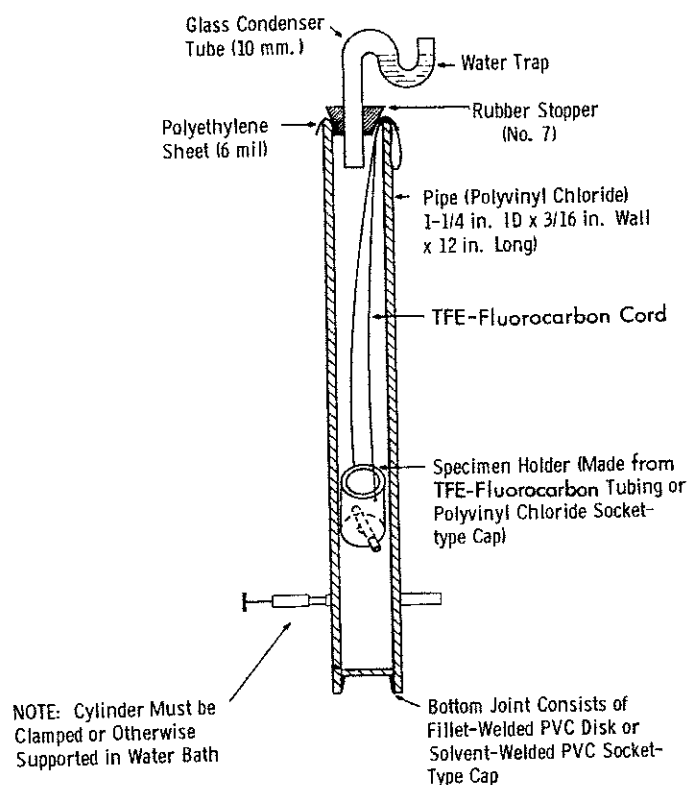


FIG. 10 Apparatus for Nitric-Hydrofluoric Acid Test

TFE-fluorocarbon tubing (1-in. inside diameter) is drilled at one end to accommodate a $\frac{3}{16}$ -in. (4.76-mm) TFE-fluorocarbon rod. The holders are flattened into an elliptical shape which is maintained by inserting the rod through the two holes and upsetting the ends of the rod with a hammer, or (2) a $\frac{1}{2}$ -in. NPS (Schedule 80) socket-type PVC cap is machined to reduce the outer diameter of the cap to $1\frac{1}{16}$ in. (27.0 mm). Holes $\frac{1}{4}$ in. (6.35 mm) in diameter are then drilled in the bottom and sides of the machined PVC caps to allow free circulation of the test solution. Smaller holes are drilled at the top of the PVC cap to attach the TFE-fluorocarbon string. A loop of the same string is attached to each specimen holder and used to suspend it in the test cylinder.

NOTE 19—All poly(vinyl chloride) materials should be specified on the order as Schedule 80, rigid unplasticized normal impact PVC.

25.1.3 Constant-Temperature Bath—The desired solution test temperature of 70°C is obtained by placing the PVC cylinders within a rack in a constant-temperature water bath. The temperature of the bath is maintained at 72 to 73°C to offset the low thermal conductivity of the poly(vinyl chloride).

25.1.4 10 % Nitric-3 % Hydrofluoric Acid Test Solution:

25.1.4.1 Caution—The 10 % nitric-3 % hydrofluoric acid solution will cause severe burns if it comes into contact with the skin. Therefore, extreme care should be exercised in handling this solution. Rubber gloves should be worn. Spilled acid should immediately be washed from the skin

with an excess of water and emergency first-aid treatment obtained.

25.1.4.2 A 10 % nitric-3 % hydrofluoric acid solution (by weight) is prepared by mixing 111 mL of 65 % nitric acid (sp gr 1.39), 54 mL of 48 % hydrofluoric acid (sp gr 1.16), and 784 mL of distilled water in a polyethylene carboy. Fresh test solution should be made up daily to avoid changes in concentration due to evaporation.

26. Preparation of Test Specimens

26.1 A specimen having a total surface area of 5 to 20 cm² is recommended. Specimens containing welds should be cut so that no more than a $\frac{1}{2}$ -in. (13-mm) width of base metal is included on either side of the weld.

26.2 The intent is to test a specimen representing as nearly as possible the surface of the material as it will be used in service. Only such finishing should be performed as is required to remove foreign material and obtain a standard, uniform finish as specified. For very heavy sections, specimens should be machined to represent the appropriate surface while maintaining reasonable specimen size for convenience in testing. Ordinarily, removal of more material than necessary will have little influence on the test results. However, in the special case of surface carburization (sometimes encountered, for instance, in tubing or castings when lubricants or binders containing carbonaceous materials are employed), it may be possible by heavy grinding or machining to remove the carburized layer completely. Such treatment of test specimens is not permissible.

26.3 When specimens are cut by shearing, the sheared edges should be refinished by machining or grinding prior to testing.

26.4 All surfaces of the specimen, including edges, should be finished using No. 80 or 120 grit abrasive paper. If dry abrasive paper is used, polish slowly to avoid overheating. Sand blasting should not be used.

26.5 The specimen should be measured and the total exposed area, including the inner surfaces of any holes, calculated in square centimetres.

26.6 The specimen should then be degreased and dried using suitable nonchlorinated agents, such as soap and acetone, and then weighed to the nearest 0.001 g.

27. Procedure

27.1 Types of Test Specimens:

27.1.1 Types 316 and 317—Test two specimens, one representing the as-received condition and one representing the laboratory-annealed condition. (The laboratory-annealed specimen must show a step structure in the oxalic acid etch test.)

27.1.2 Types 316L and 317L—Test two specimens, one representing the sensitized condition and the other a base-line specimen, which is usually the as-received (commercially annealed) specimen. If the as-received specimen does not show a step structure in the oxalic acid etch test, laboratory anneal a portion of it to give a step structure and use that sample as the base-line specimen (see footnote C of Table 5).

27.2 Fill the PVC test cylinders with 200 mL of 10 % nitric-3 % hydrofluoric acid solution and then heat in the constant temperature water bath until the solution temperature, as measured with a thermometer, is $70 \pm 0.5^\circ\text{C}$.

NOTE 20—It is important that the test solution be maintained at $70 \pm 0.5^\circ\text{C}$ because small changes in solution temperature produce large changes in the corrosion rate.

27.3 When the solution temperature is $70 \pm 0.5^\circ\text{C}$, lower the specimens into the solution by means of the specimen holders or string. After a 2-h exposure, remove the specimens from the test, wash in distilled water and acetone, dry, and weigh. Then expose the two specimens for an additional 2-h test period in fresh test solutions at $70 \pm 0.5^\circ\text{C}$.

27.4 Test only one specimen in each cylinder. In addition, it is preferable to test simultaneously the two specimens representing each of the two conditions of heat treatment for each material evaluated.

28. Calculation and Report

28.1 *Calculation of Individual Corrosion Rates*—The effect of the acid solution on each of the two specimens of each material shall be measured by determining the loss of weight of the specimen. The average corrosion rate in inches per month (Note 21), based on the 4-h test exposure, is calculated for each specimen as follows:

$$\text{Inches per month} = (287 \times W)/(A \times t \times d)$$

where:

t

= time of exposure, h,

A

= area, cm^2 ,

W

= weight loss, g, and

d

= density, g/cm^3 , for chromium-nickel-molybdenum steels, $d = 8.0 \text{ g/cm}^3$.

28.2 Calculations of Corrosion-Rate Ratios:

28.2.1 *Types 316 and 317 Stainless Steel*—The ratio of the corrosion rate for the as-received specimen to the corrosion rate for the laboratory-annealed specimen is determined.

28.2.2 *Types 316L and 317L Stainless Steel*—The ratio of the corrosion rate for the sensitized specimen to the corrosion rate for the as-received specimen is determined.

28.3 *Significance of Corrosion Rate Ratios*—A value of 1.5 or less for the above ratios indicates that the degree of intergranular attack in the 10 % nitric-3 % hydrofluoric acid test was not significant. A ratio of greater than 1.5 indicates that significant intergranular corrosion has occurred in the 10 % nitric-3 % hydrofluoric acid test.

NOTE 21—Conversion factors to other commonly used units for corrosion rates are as follows:

inches per month $\times 12$ = inches per year

inches per month $\times 1000$ = mils per month

inches per month $\times 12\ 000$ = mils per year

inches per month $\times 8350 \times \text{density}$ = milligrams per square decimetre per day

inches per month $\times 34.8 \times \text{density}$ = grams per square metre per hour

$1.00 \text{ in.}^2 = 6.45 \text{ cm}^2$

PRACTICE E—COPPER-COPPER SULFATE-16 % SULFURIC ACID TEST FOR DETECTING SUSCEPTIBILITY TO INTERGRANULAR ATTACK IN AUSTENITIC STAINLESS STEELS (7) (8)

29. Scope

29.1 This practice describes the procedure by which the copper-copper sulfate-16 % sulfuric acid test is conducted to determine the susceptibility of austenitic stainless steels to intergranular attack. The presence or absence of intergranular corrosion in this test is not necessarily a measure of the performance of the material in other corrosive media. The test does not provide a basis for predicting resistance to other forms of corrosion, such as general corrosion, pitting, or stress-corrosion cracking.

29.2 The copper-copper sulfate-16 % sulfuric acid test indicates susceptibility to intergranular attack associated with the precipitation of chromium-rich carbides. It does not detect susceptibility associated with sigma phase. This test may be used to evaluate the heat treatment accorded as-received material. It may also be used to evaluate the effectiveness of stabilizing element additions (Cb, Ti, etc.) and reductions in carbon content to aid in resisting intergranular attack.

29.3 All wrought products and weld material of austenitic stainless steels can be evaluated by this test.

30. Rapid Screening Test

30.1 Before testing in the copper-copper sulfate-16 % sulfuric acid test, specimens of certain grades of stainless steel (see Table 6) may be given a rapid screening test in accordance with the procedures given in Practice A (Sections 3 through 7). Preparation, etching, and the classification of etch structures are described therein. The use of etch-structure evaluations in connection with the copper-copper sulfate-16 % sulfuric acid test is specified in Table 6.

30.1.1 Corrosion test specimens having acceptable etch structures in the oxalic acid etch test will be essentially free of intergranular attack in the copper-copper sulfate-16 % sulfuric acid test. Such specimens are acceptable without testing in the copper-copper sulfate-16 % sulfuric acid test. All specimens having nonacceptable etch structures must be tested in the copper-copper sulfate-16 % sulfuric acid test.

31. Summary of Practice

31.1 A suitable sample of an austenitic stainless steel, embedded in copper shot or grindings, is exposed to boiling

TABLE 6 Use of Etch Structure Classifications from the Oxalic Acid Etch Test with the Copper-Copper Sulfate-16 % Sulfuric Acid Test

Grade	Acceptable Etch Structures	Nonacceptable Etch Structures ^A
AISI 201	Step, Dual, End Grain I and II	Ditch
AISI 202	Step, Dual, End Grain I and II	Ditch
AISI 301	Step, Dual, End Grain I and II	Ditch
AISI 304	Step, Dual, End Grain I and II	Ditch
AISI 304L	Step, Dual, End Grain I and II	Ditch
AISI 316	Step, Dual, End Grain I and II	Ditch
AISI 316L	Step, Dual, End Grain I and II	Ditch
AISI 317	Step, Dual, End Grain I and II	Ditch
AISI 317L	Step, Dual, End Grain I and II	Ditch
AISI 321	Step, Dual, End Grain I and II	Ditch
AISI 347	Step, Dual, End Grain I and II	Ditch

^ASpecimens having these structures must be tested in the copper-copper sulfate-16 % sulfuric acid test.

acidified copper sulfate solution for 24 h. After exposure in the boiling solution, the specimen is bent. Intergranular cracking or crazing is evidence of susceptibility.

32. Apparatus

32.1 A 1-L glass Erlenmeyer flask with a ground 45/50 glass joint and four-bulb Allihn condenser with 45/50 ground glass joint (as in 10.1.1 and 10.1.2 and Fig. 8) are required. A silicone grease is recommended for the ground glass joint.

32.2 *Specimen Supports*—An open glass cradle capable of supporting the specimens and copper shot or grindings in the flask is recommended.

NOTE 22—It may be necessary to embed large specimens, such as from heavy bar stock, in copper shot on the bottom of the test flask. A copper cradle may also be used.

32.3 *Heat Source*—Any gas or electrically heated hot plate may be utilized for heating the test solution and keeping it boiling throughout the test period.

33. Acidified Copper Sulfate Test Solution

33.1 Dissolve 100 g of copper sulfate ($\text{CuSO}_4 \cdot 5\text{H}_2\text{O}$) in 700 mL of distilled water, add 100 mL of sulfuric acid (H_2SO_4 , cp, sp gr 1.84), and dilute to 1000 mL with distilled water.

NOTE 23—The solution will contain approximately 6 weight % of anhydrous CuSO_4 and 16 weight % of H_2SO_4 .

34. Copper Addition

34.1 Electrolytic grade copper shot or grindings may be used. Shot is preferred for its ease of handling before and after the test.

34.2 A sufficient quantity of copper shot or grindings is to be used to cover all surfaces of the specimen whether it is in a vented glass cradle or embedded in a layer of copper shot on the bottom of the test flask.

34.3 The amount of copper used, assuming an excess of metallic copper is present, is not critical. The effective galvanic coupling between copper and the test specimen may have importance (9).

34.4 The copper shot or grindings may be reused if they are cleaned in warm tap water after each test.

35. Specimen Preparation

35.1 The size of the sample submitted for test and the area from which it is to be taken (end or middle of coil, midway surface and center, etc.) is generally specified in the agreement between the purchaser and the seller. The testing apparatus dictates the final size and shape of the test specimen. The specimen configuration should permit easy entrance and removal through the neck of the test container.

35.1.1 Table 8 may be used as a guide to determine

TABLE 7 Use of Etch Structure Classifications from the Oxalic Acid Etch Test With the Copper-Copper Sulfate-50 % Sulfuric Acid Test

Grade	Acceptable Etch Structures	Non-acceptable Etch Structures
CF-3M	Step, Dual, Isolated Ferrite	Ditch, Interdendritic Ditches
CF-8M	Step, Dual, Isolated Ferrite	Ditch, Interdendritic Ditches

TABLE 8 Sizes of Test Specimens

Type of Material	Size of Test Specimen
Wrought wire or rod: Up to 1/4 in. in diameter, incl Over 1/4 in. in diameter	Full diameter by 3 in. (min) long Cylindrical segment 1/4 in. thick by 1 in. (max) wide by 3 to 5 in. long ^A
Wrought sheet, strip, plates, or flat rolled products: Up to 3/16 in. thick, incl Over 3/16 in. thick	Full thickness by 3/8 to 1 in. wide by 3 in. (min) long 3/16 to 1/2 in. thick by 3/8 to 1 in. wide by 3 in. (min) long ^B
Tubing: Up to 1 1/2 in. in diameter, incl Over 1 1/2 in. in diameter	Full ring, 1 in. wide ^C A circumferential segment 3 in. (min) long cut from a 1-in. wide ring ^D

^A When bending such specimens, the curved surface shall be on the outside of the bend.

^B One surface shall be an original surface of the material under test and it shall be on the outside of the bend. Cold-rolled strip or sheets may be tested in the thickness supplied.

^C Ring sections are not flattened or subjected to any mechanical work before they are subjected to the test solution.

^D Specimens from welded tubes over 1 1/2 in. in diameter shall be taken with the weld on the axis of the bend.

acceptable specimen sizes. There may be restrictions placed on specimen size by the testing apparatus.

35.1.2 Specimens obtained by shearing should have the sheared edges machined or ground off prior to testing. Care should be taken when grinding to avoid overheating or "burning." A "squared" edge is desirable.

35.2 Any scale on the specimens should be removed mechanically unless a particular surface finish is to be evaluated. Chemical removal of scale is permissible when this is the case. Mechanical removal of scale should be accomplished with 120-grit iron-free aluminum oxide abrasive.

35.2.1 Each specimen should be degreased using a cleaning solvent such as acetone, alcohol, ether, or a vapor degreaser prior to being tested.

35.3 All austenitic material in the "as-received" (mill-annealed) condition should be capable of meeting this test.

35.3.1 Specimens of extra low carbon and stabilized grades are tested after sensitizing heat treatments at 1200 to 1250°F (650 to 675°C), which is the range of maximum carbide precipitation. The most commonly used sensitizing treatment is 1 h at 1250°F. Care should be taken to avoid carburizing or nitriding the specimens. The heat treating is best carried out in air or neutral salt.

NOTE 24—The sensitizing treatment (1250°F) is performed to check the effectiveness of stabilized and 0.03 % maximum carbon materials in resisting carbide precipitation, hence, intergranular attack.

36. Test Conditions

36.1 The volume of acidified copper sulfate test solution used should be sufficient to completely immerse the specimens and provide a minimum of 50 mL/in.² (8 mL/cm²) of specimen surface area.

36.1.1 As many as three specimens can be tested in the same container. It is ideal to have all the specimens in one flask to be of the same grade, but it is not absolutely necessary. The solution volume-to-sample area ratio is to be maintained.

36.1.2 The test specimen(s) should be immersed in ambient test solution which is then brought to a boil and maintained boiling throughout the test period. Begin timing the test period when the solution reaches the boiling point.

NOTE 25—Measures should be taken to minimize bumping of the solution when glass cradles are used to support specimens. A small amount of copper shot (8 to 10 pieces) on the bottom of the flask will conveniently serve this purpose.

36.1.3 The time of the test shall be a minimum of 24 h unless a longer time is agreed upon between the purchaser and the producer. If not 24 h, the test time shall be specified on the test report. Fresh test solution would not be needed if the test were to run 48 or even 72 h. (If any adherent copper remains on the specimen, it may be removed by a brief immersion in concentrated nitric acid at room temperature.)

NOTE 26—Results in the literature indicate that this test is more sensitive if it is run for longer times (11), (12).

37. Bend Test

37.1 The test specimen shall be bent through 180° and over a diameter equal to the thickness of the specimen being bent (see Fig. 11). In no case shall the specimen be bent over a smaller radius or through a greater angle than that specified in the product specification. In cases of material having low ductility, such as severely cold worked material, a 180° bend may prove impractical. Determine the maximum angle of bend without causing cracks in such material by bending an untested specimen of the same configuration as the specimen to be tested.

37.1.1 Duplicate specimens shall be obtained from sheet material so that both sides of the rolled samples may be bent through a 180° bend. This will assure detection of intergranular attack resulting from carburization of one surface of sheet material during the final stages of rolling.

NOTE 26—Identify the duplicate specimen in such a manner as to ensure both surfaces of the sheet material being tested are subjected to the tension side of the 180° bends.

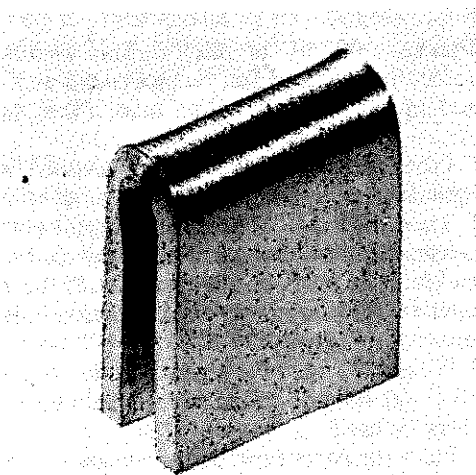


FIG. 11 A Bent Copper-Copper Sulfate-Sulfuric Acid Test Specimen

37.1.2 Samples machined from round sections or cast material shall have the curved or original surface on the outside of the bend.

37.1.3 The specimens are generally bent by holding in a vise and starting the bend with a hammer. It is generally completed by bringing the two ends together in the vise. Heavy specimens may require bending in a fixture of suitable design. An air or hydraulic press may also be used for bending the specimens.

37.1.4 Tubular products should be flattened in accordance with the flattening test, prescribed in Test Methods and Definitions A 370.

37.1.5 When agreed upon between the purchaser and the producer, the following shall apply to austenitic stainless steel plates 0.1875 in. (4.76 mm) and thicker:

37.1.5.1 Samples shall be prepared according to Table 7.

37.1.5.2 The radius of bend shall be two times the sample thickness, and the bend axis shall be perpendicular to the direction of rolling.

37.1.5.3 Welds on material 0.1875 in. (4.76 mm) and thicker shall have the above bend radius, and the weld-base metal interface shall be located approximately in the centerline of the bend.

37.1.5.4 Face, root, or side bend tests may be performed, and the type of bend test shall be agreed upon between the purchaser and the producer. The bend radius shall not be less than that required for mechanical testing in the appropriate material specification (for base metal) or in ASME Code Section IX (for welds).

38. Evaluation

38.1 The bent specimen shall be examined under low (5 to 20×) magnification (see Fig. 12). The appearance of fissures or cracks indicates the presence of intergranular attack (see Fig. 13).

38.1.1 When an evaluation is questionable (see Fig. 14), presence or absence of intergranular attack shall be determined by metallographic examination of a longitudinal section of the specimen at a magnification of 100 to 250×.

NOTE 27—Cracking that originates at the edge of the specimen should be disregarded. The appearance of deformation lines, wrinkles, or "orange peel" on the surface, without accompanying cracks or fissures, should be disregarded also.

NOTE 28—Cracks suspected as arising through poor ductility may be investigated by bending a similar specimen which was not exposed to the boiling test solution. A visual comparison between these specimens should assist in interpretation.

PRACTICE F—COPPER-COPPER SULFATE-50 % SULFURIC ACID TEST FOR DETERMINING SUSCEPTIBILITY TO INTERGRANULAR ATTACK IN AUSTENITIC STAINLESS STEELS

39. Scope

39.1 This practice describes the procedure for conducting the boiling copper-copper sulfate-50 % sulfuric acid test which measures the susceptibility of stainless steels to intergranular attack. The presence or absence of intergranular attack in this test is not necessarily a measure of the performance of the material in other corrosive environments. The test does not provide a basis for predicting resistance to forms of corrosion other than

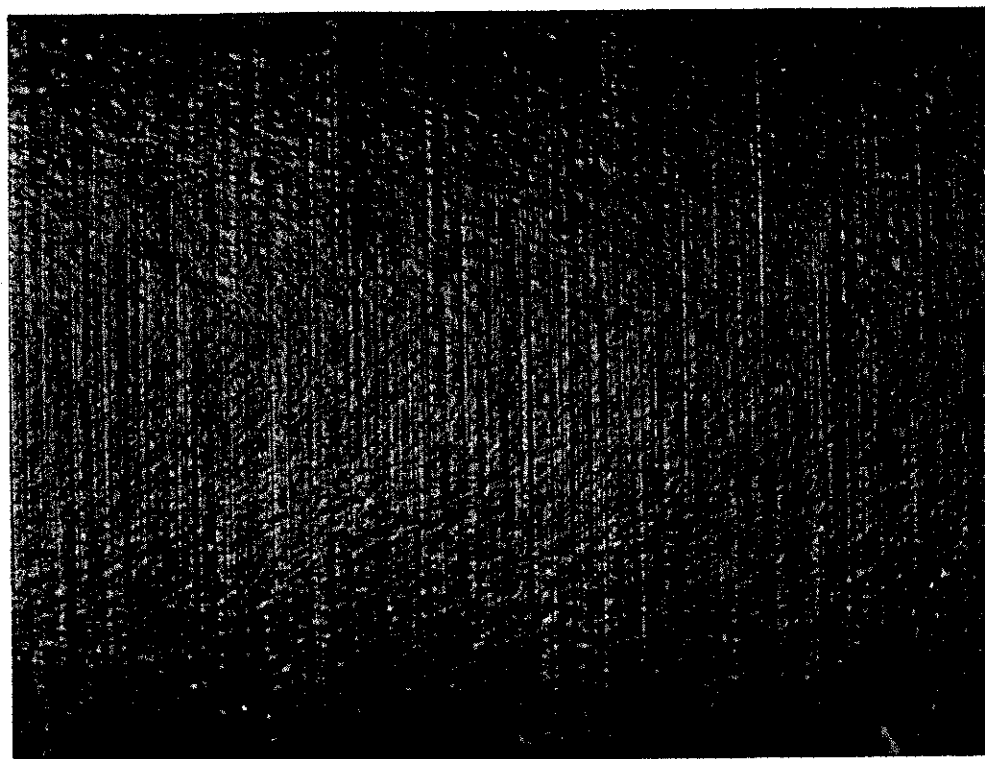


FIG. 12 Passing Test Specimen—View of the Bent Area (20× magnification before reproduction)

intergranular, such as general corrosion, pitting, or stress-corrosion cracking.

39.2 This test may be used to evaluate the susceptibility of as received material to intergranular corrosion caused by chromium carbide precipitation. It may also be used to evaluate the resistance of extra-low carbon grades to sensitization to intergranular attack caused by welding or heat treatments.

39.3 This test should not be used to detect susceptibility to intergranular attack resulting from the formation of sigma phase. For detecting susceptibility to environments known to cause intergranular attack due to sigma use Practices B or C.

40. Rapid Screening Test

40.1 Before testing in copper-copper sulfate-50 % sulfuric acid test, specimens of certain grades of stainless steels (see Table 1) may be given a rapid screening test in accordance with procedures given in Practice A, oxalic acid etch test for classification of etch structures of austenitic stainless steels. Preparation, etching, and the classification of etch structures are described therein. The use of etch structure evaluations in connection with the copper-copper sulfate-50 % sulfuric acid test is specified in Table 7.

40.1.1 Corrosion test specimens having acceptable etch structures in the oxalic acid etch test will be essentially free of intergranular attack in the copper-copper sulfate-50 % sulfuric acid test. Such specimens are acceptable without testing in the copper-copper sulfate-50 % sulfuric acid test. All specimens having nonacceptable etch structures must be tested in the copper-copper sulfate-50 % sulfuric acid test.

41. Apparatus

41.1 The basic apparatus is described in Section 10. Also needed are the following:

41.1.1 For weight loss determination, an analytical balance capable of weighing to the nearest 0.001 g.

41.1.2 A piece of copper metal about $\frac{1}{8}$ by $\frac{3}{4}$ by $1\frac{1}{2}$ in. (3.2 by 19 by 38 mm) with a bright, clean finish. An equivalent area of copper shot or chips may be used. The copper should be washed and degreased before use. A rinse in 5 % H_2SO_4 will clean corrosion products from the copper.

42. Copper-Copper Sulfate-50 % Sulfuric Acid Test Solution

42.1 Prepare 600 mL of test solution as follows. **Caution**—Protect the eyes and face by face shield and use rubber gloves and apron when handling acid. Place flask under hood.

42.1.1 First, measure 400.0 mL of distilled water in a 500-mL graduate and pour into the Erlenmeyer flask.

42.1.2 Then measure 236.0 mL of reagent grade sulfuric acid of a concentration that must be in the range from 95.0 to 98.0 weight % in a 250 mL graduate. Add the acid slowly to the water in the Erlenmeyer flask to avoid boiling by the heat received.

42.1.3 Weigh 72 g of reagent grade copper sulfate ($CuSO_4 \cdot 5 H_2O$) and add to the sulfuric acid solution. A triple balance may be used.

42.1.4 Place the copper piece into one glass cradle and put it into the flask.

42.1.5 Drop boiling chips into the flask.⁵

42.1.6 Lubricate the ground-glass joint with silicone grease.

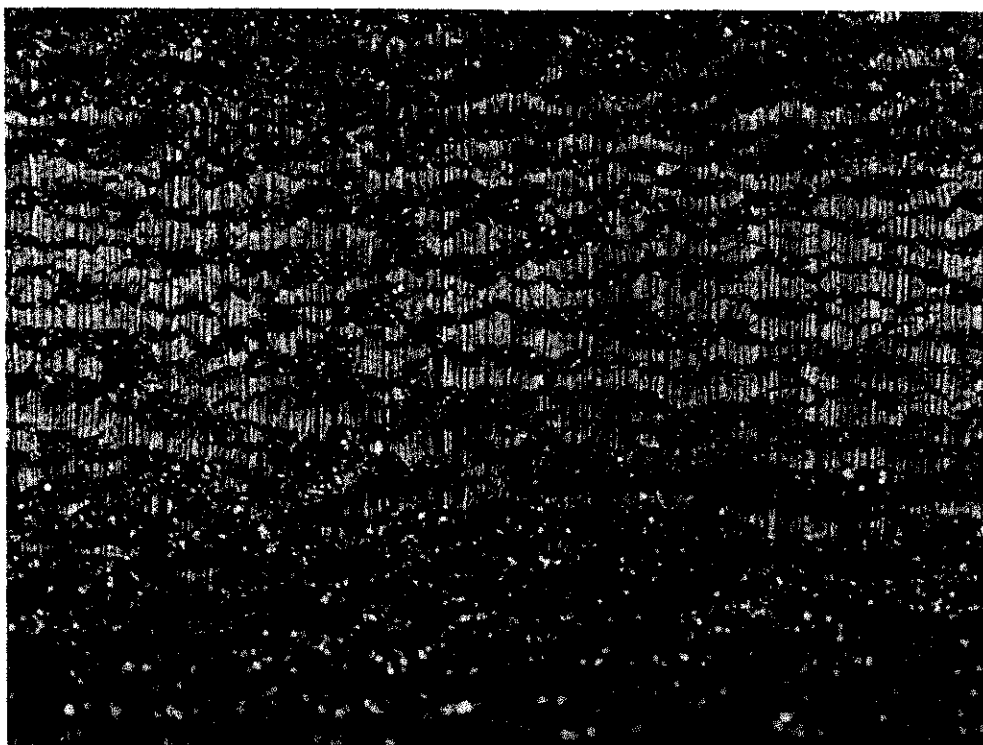


FIG. 13 Failing Test Specimen (Note the many intergranular fissures. Bent area at 20× magnification before reproduction.)

42.1.7 Cover the flask with the condenser and circulate cooling water.
42.1.8 Heat the solution slowly until all of the copper sulfate is dissolved.

43. Preparation of Test Specimens

43.1 Prepare test specimens as described in Section 12.
43.2 Specimens of extra-low carbon and stabilized grades are tested after sensitizing heat treatments at 1200 to 1250°F (650 to 675°C) which is the range of maximum carbide precipitation. The length of time of heating used for this sensitizing treatment determines the maximum permissible corrosion rate for such grades in the copper-copper sulfate-50 % sulfuric acid test. The most commonly used sensitizing treatment is 1 h at 1250°F (675°C).

44. Procedure

44.1 Place the specimen in another glass cradle and immerse in boiling solution.

44.2 Mark the liquid level on the flask with wax crayon to provide a check on vapor loss which would result in concentration of the acid. If there is an appreciable change in the level, repeat the test with fresh solution and a reground specimen.

44.3 Continue immersion of the specimen for 120 h, then remove the specimen, rinse in water and acetone, and dry. If any adherent copper remains on the specimen, it may be removed by a brief immersion in concentrated nitric acid at room temperature.

44.4 For weight loss determination, weigh the specimen and subtract the weight from the original weight.

44.5 No intermediate weighings are usually necessary. The tests can be run without interruption. However, if preliminary results are desired, the specimen can be removed at any time for weighing.

44.6 No changes in solution are necessary during the test.

45. Calculation and Report

45.1 The effect of the acid solution on the material shall be measured by determining the loss of weight of the specimen. The corrosion rate should be reported as inches of penetration per month (Note 8) calculated as follows:

$$\text{Inches per month} = (287 \times w) / (A \times t \times d)$$

where:

t = time or exposure, h,

A = area, cm^2 ,

w = weight loss, g, and

d = density, g/cm^3 .

For chromium-nickel-molybdenum steels, $d = 8.00 \text{ g/cm}^3$.

REFERENCES

- (1) For original descriptions of the use of etch structure classifications, see Streicher, M. A., "Screening Stainless Steels from the 240-h Nitric Acid Test by Electrolytic Etching in Oxalic Acid," *ASTM*

Bulletin, No. 188, February 1953, p. 35; also "Results of Cooperative Testing Program for the Evaluation of the Oxalic Acid Etch Test," *ASTM Bulletin*, No. 195, January 1954, p. 63.

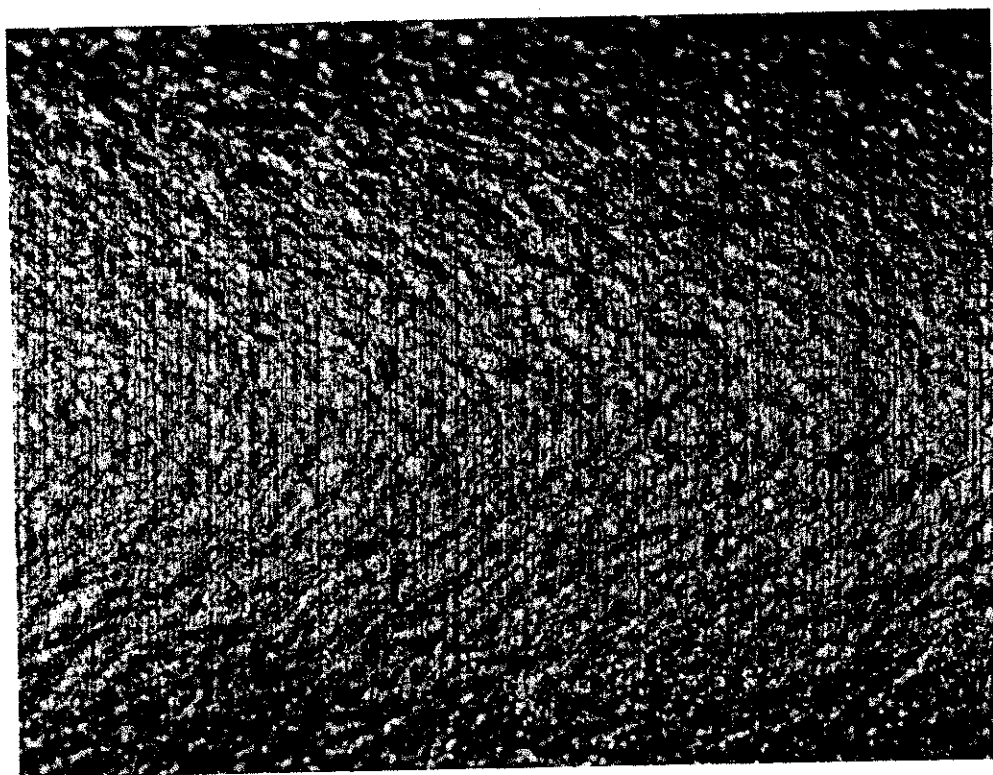


FIG. 14 Doubtful Test Result (Note the traces of intergranular fissures and "orange-peel" surface. Bent area at 20x magnification before reproduction.)

- (2) For original description of ferric sulfate-sulfuric acid test, see Streicher, M. A., "Intergranular Corrosion Resistance of Austenitic Stainless Steels: A Ferric Sulfate-Sulfuric Acid Test," *ASTM Bulletin*, No. 229, April 1958, pp. 77-86.
- (3) For original descriptions of the boiling nitric acid test, see Huey, W. R., "Corrosion Test for Research and Inspection of Alloys," *Transactions, Am. Soc. Steel Treating*, Vol 18, 1930, p. 1126; also, "Report of Subcommittee IV on Methods of Corrosion Testing," *Proceedings, ASTM*, Vol 33, Part I, 1933, p. 187.
- (4) For details, see DeLong, W. B., "Testing Multiple Specimens of Stainless Steels in a Modified Boiling Nitric Acid Test Apparatus," *Symposium on Evaluation Tests for Stainless Steels, ASTM STP 93*, ASTM, 1950, p. 211.
- (5) See *Industrial and Engineering Chemistry*, Vol 17, 1925, p. 756; also, "A.C.S. Analytical Reagents. Specifications Recommended by Committee on Analytical Reagents," Am. Chem. Soc., March 1941.
- (6) For original description of 10 % nitric-3 % hydrofluoric acid test, see Warren, D., "Nitric-Hydrofluoric Acid Evaluation Test for Type 316L Stainless Steel," *ASTM Bulletin*, No. 230, May 1958, pp. 45-56.
- (7) The use of copper to accelerate the intergranular corrosion of sensitized austenitic stainless steels in copper sulfate-sulfuric acid was first described by H. J. Rocha in the discussion of a paper by Brauns, E., and Pier, G., *Stahl und Eisen*, Vol 75, 1955, p. 579.
- (8) For original evaluation of the copper-copper sulfate-sulfuric acid test, see Scharfstein, L. R., and Eisenbrown, C. M., "An Evaluation of Accelerated Strauss Testing," *ASTM STP 369*, ASTM, 1963, pp. 235-239.
- (9) Subtle effects due to variations in copper surface areas, galvanic contact, condenser design, etc., are described by Herbsleb, G., and Schwenk, W., "Untersuchungen zur Einstellung des Redoxpotentials der Straussschen Lösung mit Zusatz von Metallischem Kupfer," *Corrosion Science*, Vol 7, 1967, pp. 501-511.
- (10) Brown, M. H., "Behavior of Austenitic Stainless Steels in Evaluation Tests for the Detection of Susceptibility to Intergranular Corrosion," *Corrosion*, Vol 30, January 1974, pp. 1-12.
- (11) Streicher, M. A., "Theory and Application of Evaluation Tests for Detecting Susceptibility to Intergranular Attack in Stainless Steels and Related Alloys-Problems and Opportunities," *Intergranular Corrosion of Stainless Alloys, ASTM STP 656*, R. F. Steigerwald ed., ASTM, 1978, pp. 3-84.
- (12) Walker, W. L., "Variations in the Evaluation of ASTM A 262, Practice E, Results (ASTM Subcommittee A01.14 Round Robin)," *Intergranular Corrosion of Stainless Alloys, ASTM STP 656*, R. F. Steigerwald ed., ASTM, 1978, pp. 146-153.

The American Society for Testing and Materials takes no position respecting the validity of any patent rights asserted in connection with any item mentioned in this standard. Users of this standard are expressly advised that determination of the validity of any such patent rights, and the risk of infringement of such rights, are entirely their own responsibility.

This standard is subject to revision at any time by the responsible technical committee and must be reviewed every five years and if not revised, either reapproved or withdrawn. Your comments are invited either for revision of this standard or for additional standards and should be addressed to ASTM Headquarters. Your comments will receive careful consideration at a meeting of the responsible technical committee, which you may attend. If you feel that your comments have not received a fair hearing you should make your views known to the ASTM Committee on Standards, 1916 Race St., Philadelphia, PA 19103.