

NOTES CONTINUED:

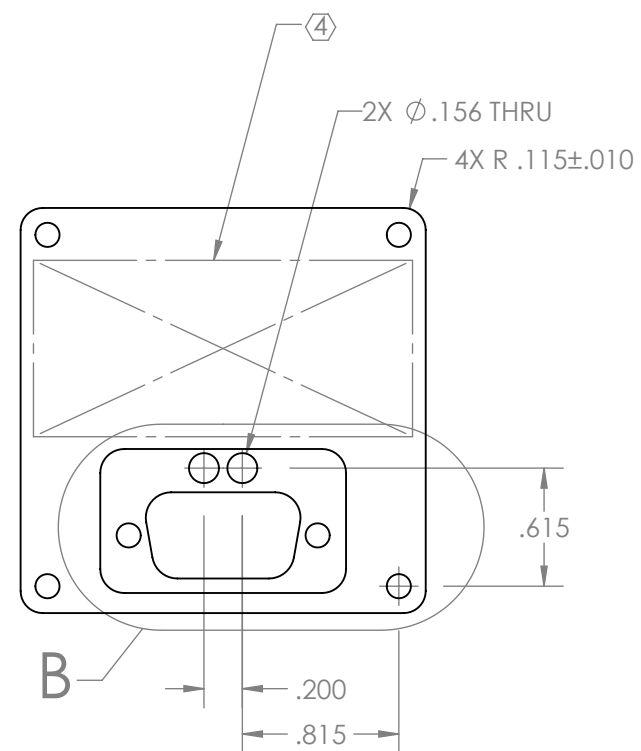
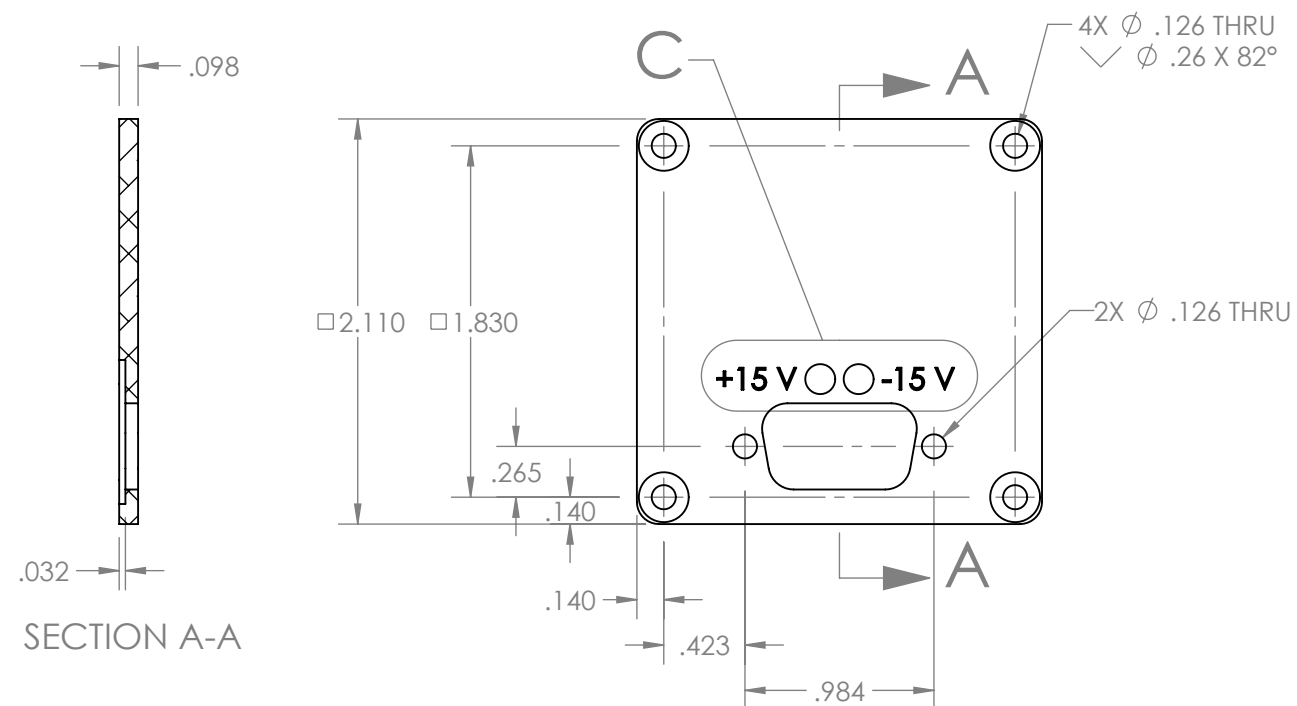
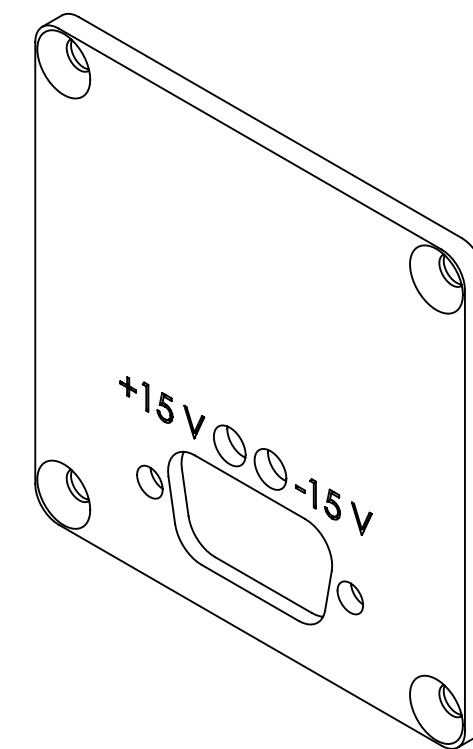
④ SCRIBE, ENGRAVE (A VIBRATORY TOOL MAY BE USED), LASER MARK OR MECHANICALLY STAMP (NO INKS OR DYES) DRAWING PART NUMBER, REVISION (AND VARIANT OR TYPE IF APPLICABLE) ON NOTED SURFACE OF PART FOLLOWED ON THE NEXT LINE WITH A THREE DIGIT SERIAL NUMBER. SERIAL NUMBERS START AT 001 FOR THE FIRST ARTICLE AND PROCEED CONSECUTIVELY. USE MINIMUM 0.12" HIGH CHARACTERS, UNLESS THE SIZE OF THE PART DICTATES SMALLER CHARACTERS. EXAMPLE: DXXXXXXXX-VY, ~~TYPE-XX~~, S/N XXX

5. WEIGHT: 0.036 LB.

⑥ TUMBLE OR VIBRATORY DEBURR-FINISH. 125 μINCH Ra MAX FINAL ROUGHNESS, ALL SURFACES, BEFORE ANODIZING.

⑦ BLACK ANODIZE PER MIL-A-8625F, TYPE II, CLASS 2.

REV.	DATE	DCN #	BOM #
v1	19 MAR 2013	-	-
-	-	-	-
-	-	-	-



D1300102 aLIGO Pcal Photodetector Cover, Rear, PART PDM REV: X-018, DRAWING PDM REV: X-003

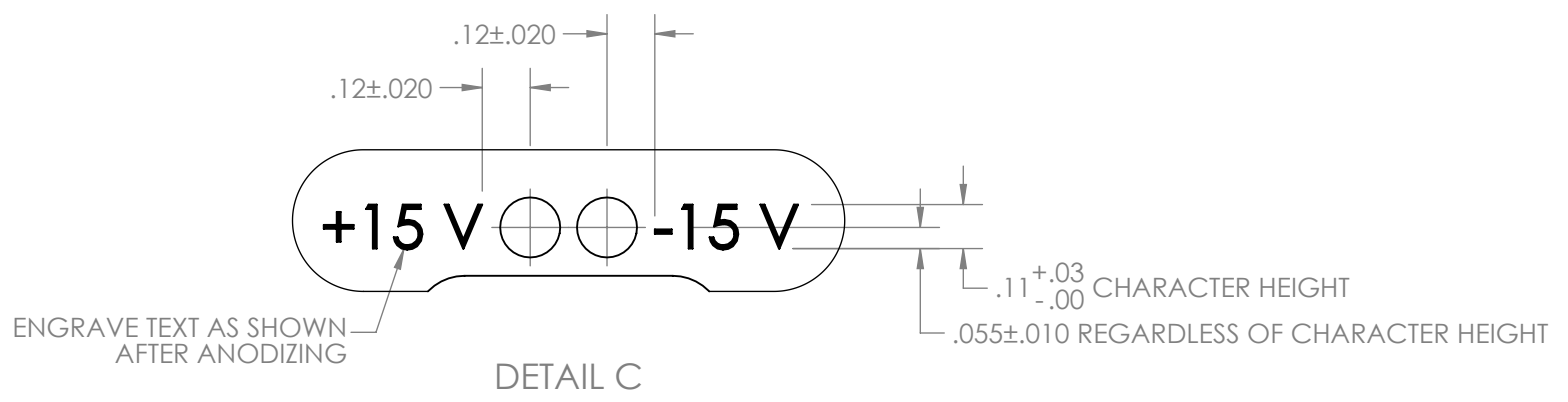
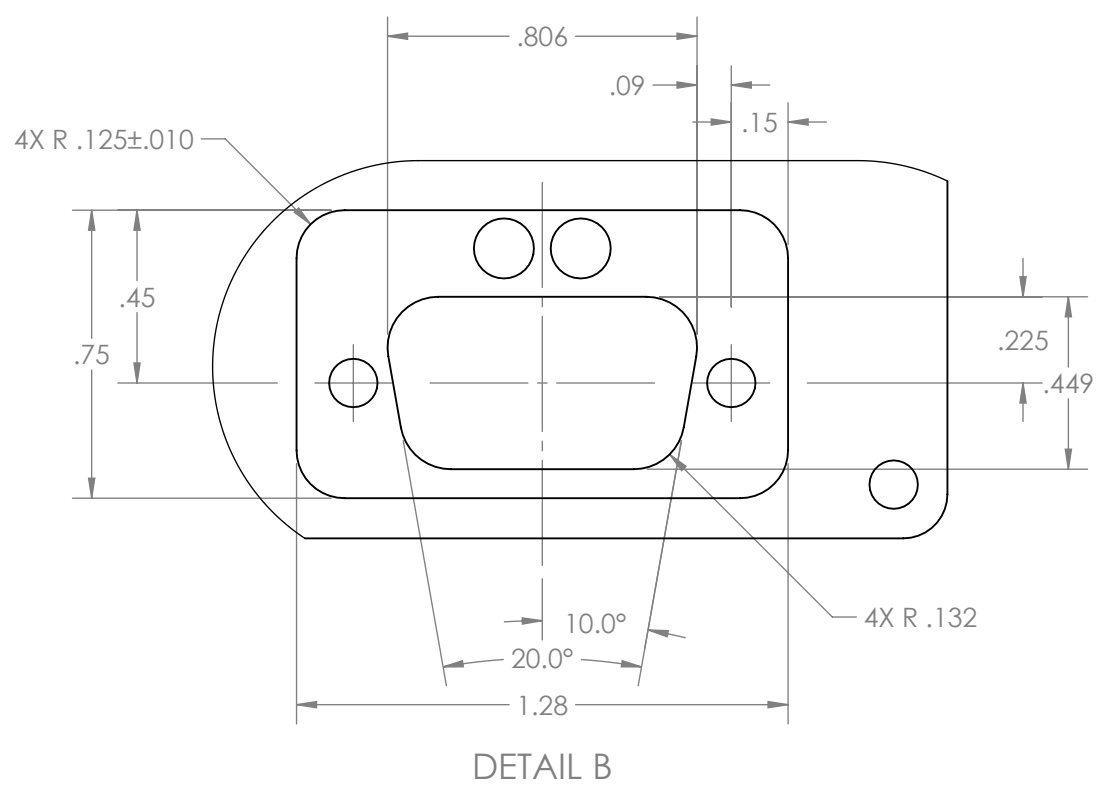
NOTES AND TOLERANCES: (UNLESS OTHERWISE SPECIFIED)	
DIMENSIONS ARE IN INCHES	
1. INTERPRET DRAWING PER ASME Y14.5-1994. 2. BREAK ALL SHARP EDGES, .02 MAX. 3. DO NOT SCALE FROM DRAWING.	
TOLERANCES: .XX ± .01 .XXX ± .005	
ANGULAR ± 0.5°	
MATERIAL 6061-T6 Al	FINISH ⑥⑦


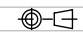
CALIFORNIA INSTITUTE OF TECHNOLOGY MASSACHUSETTS INSTITUTE OF TECHNOLOGY		PART NAME aLIGO PCAL PHOTODETECTOR COVER, REAR	
SYSTEM ADVANCED LIGO	SUB-SYSTEM AOS	DESIGNER R. SAVAGE	DATE 07 MAR 2013
NEXT ASSY D1300103	CHECKER C. CONLEY	DATE 07 MAR 2013	REV. v1
SCALE: NONE		PROJECTION:	SHEET 1 OF 2

D1300102 aLIGO Pcal Photodetector Cover, Rear, PART PDM REV: X-018, DRAWING PDM REV: X-003

8 7 6 5 4 3 2 1

D
C
B
A



 CALIFORNIA INSTITUTE OF TECHNOLOGY MASSACHUSETTS INSTITUTE OF TECHNOLOGY	
SIZE B	DWG. NO. D1300102
SCALE: NONE	PROJECTION: 
REV. v1	SHEET 2 OF 2

8 7 6 5 4 3 2 1

D
C
B
A