

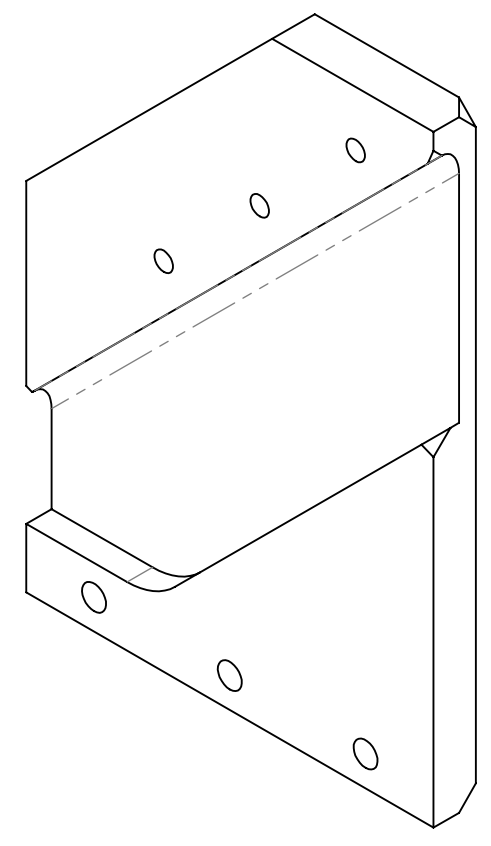
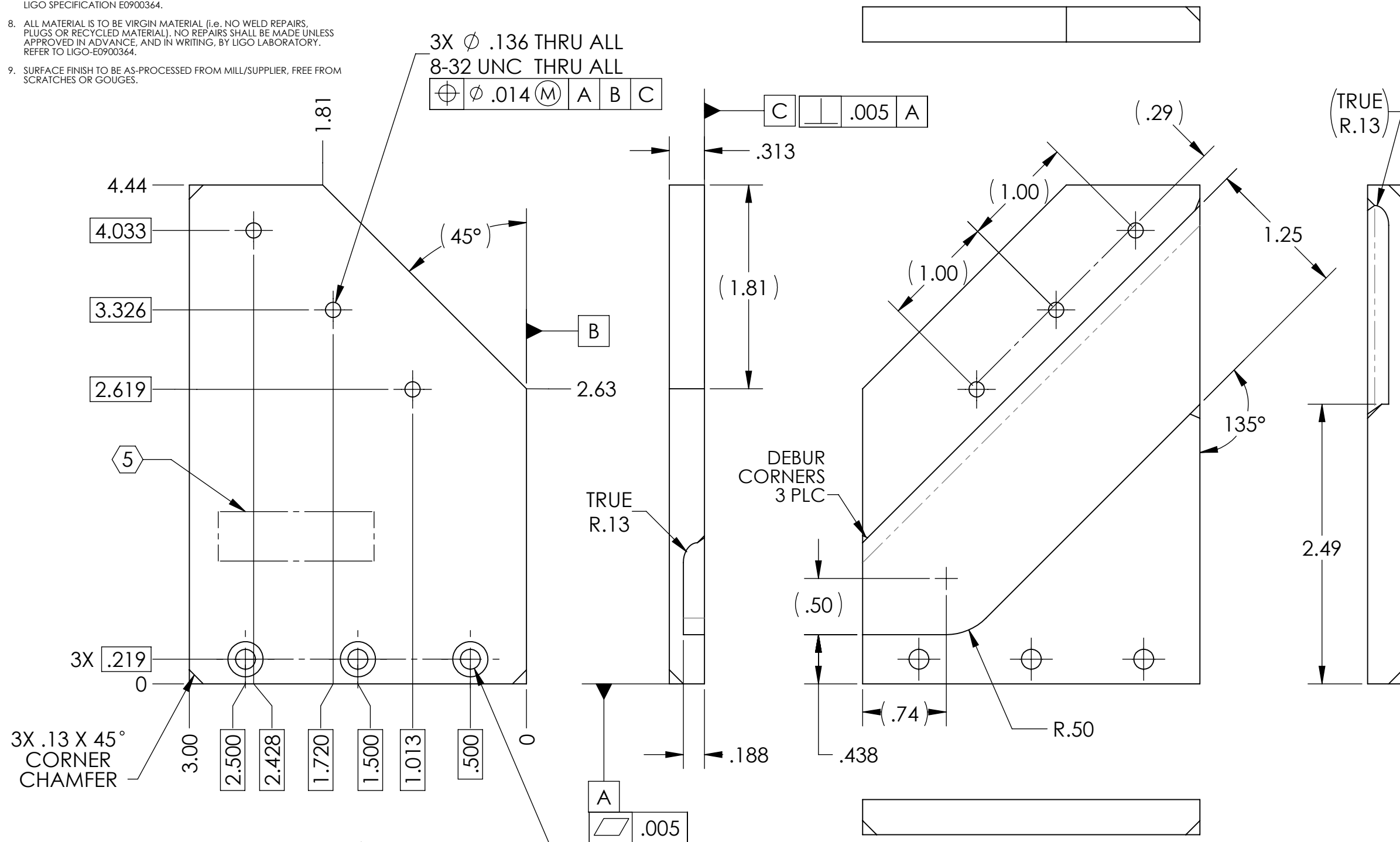
D1201546_UPRIGHT LOWER PERISCOPE MIRROR MOUNT, gLIGO TCS CO2P, H1-L1, PART PDM REV: X-005, DRAWING PDM REV: X-008

NOTES CONTINUED:
 5. SCRIBE, ENGRAVE (A VIBRATORY TOOL MAY BE USED), LASER MARK OR MECHANICALLY STAMP (NO INKS OR DYES) DRAWING PART NUMBER, REVISION (AND VARIANT OR "TYPE" IF APPLICABLE) ON NOTED SURFACE OF PART FOLLOWED ON THE NEXT LINE WITH A THREE DIGIT SERIAL NUMBER. SERIAL NUMBERS START AT 001 FOR THE FIRST ARTICLE AND PROCEED CONSECUTIVELY. USE MINIMUM 0.12" HIGH CHARACTERS, UNLESS THE SIZE OF THE PART DICTATES SMALLER CHARACTERS. EXAMPLE: DXXXXXX-VY, TYPE-XX, S/N XXX

6. APPROXIMATE WEIGHT = 0.265 LB.
 7. ALL PARTS SHALL BE MANUFACTURED IN ACCORDANCE WITH LIGO SPECIFICATION E0900364.
 8. ALL MATERIAL IS TO BE VIRGIN MATERIAL (i.e. NO WELD REPAIRS, PLUGS OR RECYCLED MATERIAL). NO REPAIRS SHALL BE MADE UNLESS APPROVED IN ADVANCE, AND IN WRITING, BY LIGO LABORATORY. REFER TO LIGO-E0900364.
 9. SURFACE FINISH TO BE AS-PROCESSED FROM MILL/SUPPLIER, FREE FROM SCRATCHES OR GOUGES.

TYPE	DESCRIPTION
-01	X-ARM (SHEET 1)
-02	Y-ARM (SHEET 2)

REV.	DATE	DCN #	DRAWING TREE #
v1	12-DEC-2012	E1200891-x0	E1201007-v1
v2	14-FEB-2013	E1200891-v1	E1201007-v2
v3	09-OCT-2013	E1300729-x0	E1201007-v3



-01 DETAIL

NOTES AND TOLERANCES: (UNLESS OTHERWISE SPECIFIED)

DIMENSIONS ARE IN INCHES

TOLERANCES:
 .XX ± .01
 .XXX ± .005

ANGULAR ± 1.0°

1. INTERPRET DRAWING PER ASME Y14.5-1994.
 2. REMOVE ALL SHARP EDGES, .005-.015, FOR MACHINED PARTS. ROUND ALL EDGES APPROXIMATELY R.02
 3. DO NOT SCALE FROM DRAWING.
 4. ALL MACHINING FLUIDS MUST BE FULLY SYNTHETIC, FULLY WATER SOLUBLE AND FREE OF SULFUR, SILICONE, AND CHLORINE.

MATERIAL 6061-T6 Al

FINISH 63 μ inch

LIGO CALIFORNIA INSTITUTE OF TECHNOLOGY
 MASSACHUSETTS INSTITUTE OF TECHNOLOGY

SYSTEM ADVANCED LIGO **SUB-SYSTEM** AOS

PART NAME UPRIGHT LOWER PERISCOPE MIRROR MOUNT

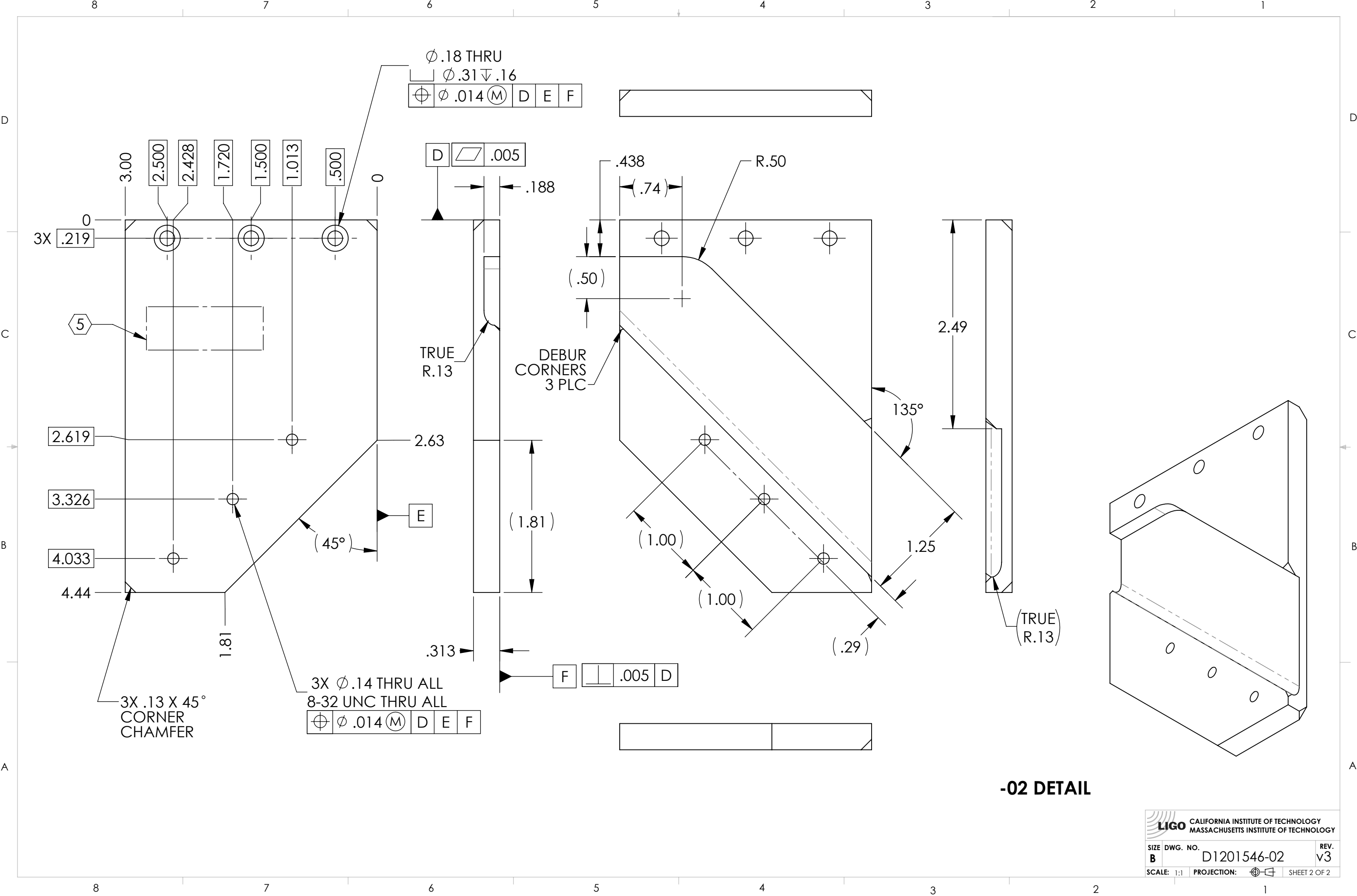
DESIGNER M. JACOBSON 26 JUL 2012 **SIZE** DWG. NO. **D1201546** **REV.** v3

DRAFTER M. JACOBSON 12-DEC-2012

CHECKER E. SANCHEZ 09-OCT-2013

APPROVAL HEPTONSTALL07-OCT-2013 **SCALE:** 1:1 **PROJECTION:** **SHEET 1 OF 2**

D1201546_UPRIGHT LOWER PERISCOPE MIRROR MOUNT, dLIGO TCS CO2P, HI-L1, PART PDM REV: X-003, DRAWING PDM REV: X-008



-02 DETAIL

CALIFORNIA INSTITUTE OF TECHNOLOGY MASSACHUSETTS INSTITUTE OF TECHNOLOGY	
SIZE DWG. NO. B D1201546-02	REV. v3
SCALE: 1:1 PROJECTION:	SHEET 2 OF 2