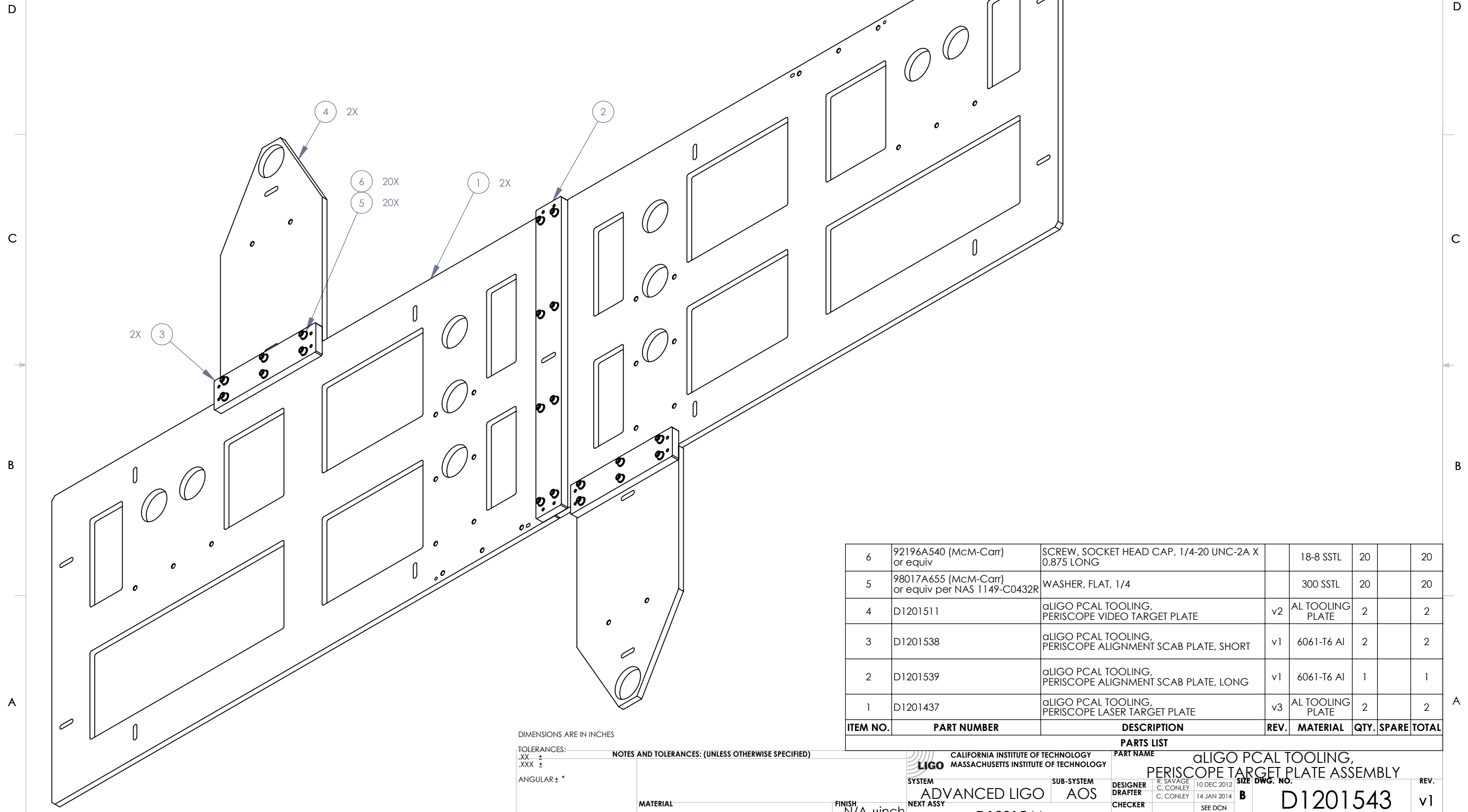


8 7 6 5 4 3 2 1

NOTES:
 1. WEIGHT: 51.7 LB.
 2. EITHER OF TWO CONFIGURATIONS CAN BE BUILT FROM THE BOM LISTED PARTS. SEE SHEET 2.

REV.	DATE	DCN #	DRAWING TREE #
v1	14 JAN 2014	E1400015-x0	-
-	-	-	-
-	-	-	-



ITEM NO.	PART NUMBER	DESCRIPTION	REV.	MATERIAL	QTY.	SPARE	TOTAL
6	92196A540 (McM-Carr) or equiv	SCREW, SOCKET HEAD CAP, 1/4-20 UNC-2A X 0.875 LONG		18-8 SSSL	20		20
5	98017A655 (McM-Carr) or equiv per NAS 1149-C0432R	WASHER, FLAT, 1/4		300 SSSL	20		20
4	D1201511	aLIGO PCAL TOOLING, PERISCOPE VIDEO TARGET PLATE	v2	AL TOOLING PLATE	2		2
3	D1201538	aLIGO PCAL TOOLING, PERISCOPE ALIGNMENT SCAB PLATE, SHORT	v1	6061-T6 Al	2		2
2	D1201539	aLIGO PCAL TOOLING, PERISCOPE ALIGNMENT SCAB PLATE, LONG	v1	6061-T6 Al	1		1
1	D1201437	aLIGO PCAL TOOLING, PERISCOPE LASER TARGET PLATE	v3	AL TOOLING PLATE	2		2

DIMENSIONS ARE IN INCHES
 TOLERANCES:
 .XX ±
 .XXX ±
 ANGULAR ± °

NOTES AND TOLERANCES: (UNLESS OTHERWISE SPECIFIED)

MATERIAL: N/A
 FINISH: N/A μinch

CALIFORNIA INSTITUTE OF TECHNOLOGY
 MASSACHUSETTS INSTITUTE OF TECHNOLOGY

SYSTEM: ADVANCED LIGO
 SUB-SYSTEM: AOS
 NEXT ASSY: D1201544

PART NAME: aLIGO PCAL TOOLING,
 PERISCOPE TARGET PLATE ASSEMBLY

DESIGNER: R. SAVAGE
 DRAFTER: C. CONLEY
 CHECKER: C. CONLEY
 APPROVAL:

DATE: 10 DEC 2012
 14 JAN 2014
 SEE DCN
 SEE DCN

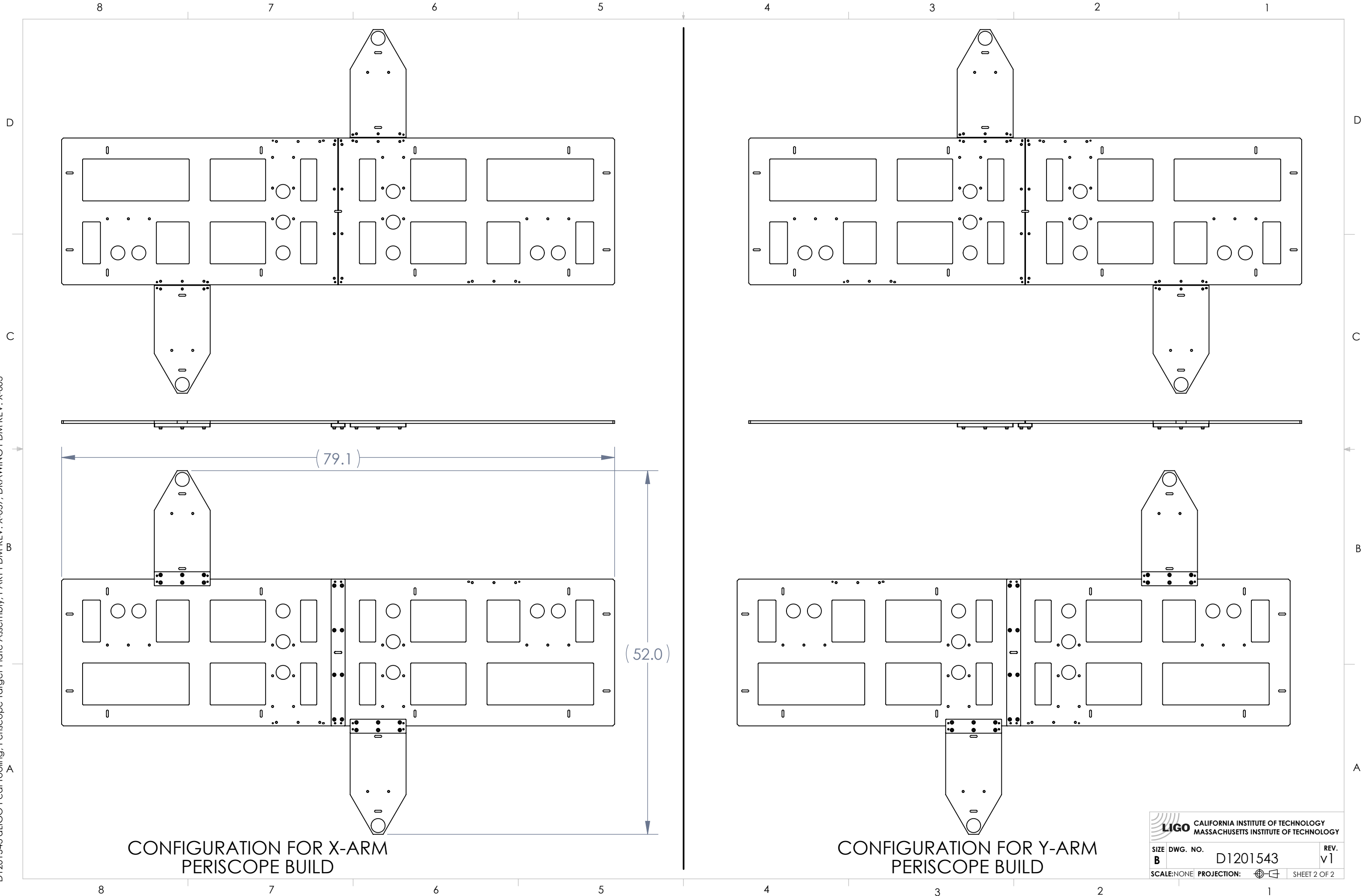
SIZE: B
 DWG. NO.: D1201543
 SCALE: NONE
 PROJECTION:

REV. v1
 SHEET 1 OF 2

D1201543 aLIGO Pcal Tooling, Periscope Target Plate Assembly, PART PDM REV: X-057, DRAWING PDM REV: X-003

8 7 6 5 4 3 2 1

D1201543 Pcal Tooling, Periscope Target Plate Assembly, PART PDM REV: X-057, DRAWING PDM REV: X-003



CONFIGURATION FOR X-ARM PERISCOPE BUILD

CONFIGURATION FOR Y-ARM PERISCOPE BUILD

LIGO CALIFORNIA INSTITUTE OF TECHNOLOGY
 MASSACHUSETTS INSTITUTE OF TECHNOLOGY

SIZE	DWG. NO.	REV.
B	D1201543	v1
SCALE: NONE	PROJECTION:	SHEET 2 OF 2