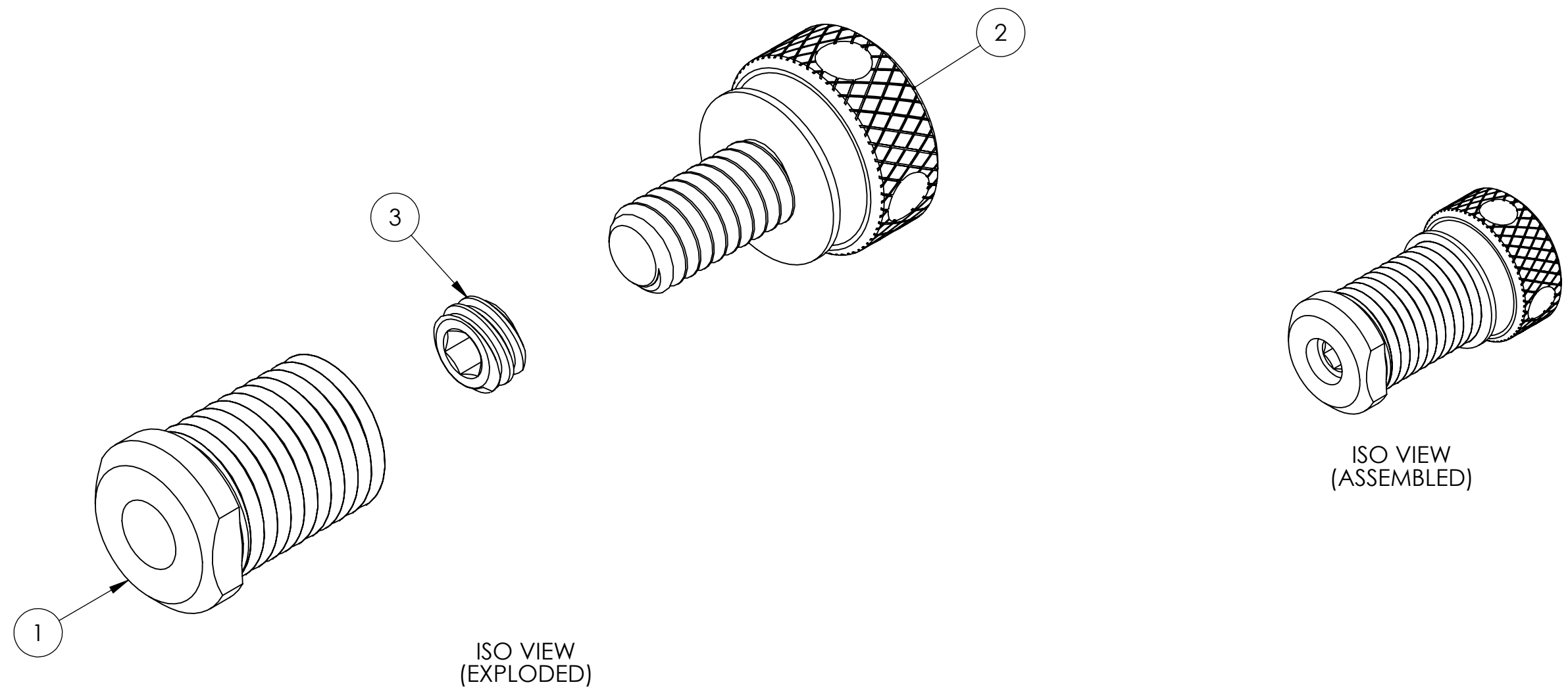


| REV. | DATE | DCN # | DRAWING TREE # |
|------|-------------|-------------|----------------|
| v1 | 16 NOV 2012 | E1201029 | - |
| v2 | 17 APR 2015 | E1500212-x0 | - |
| - | - | - | - |



| ITEM NO. | PART NUMBER | DESCRIPTION | MATERIAL | REQ |
|----------|--------------------|--|------------------|-----|
| 3 | McMaster 91318A410 | Hollow-Lock Set Screw, 1/4"-20 X 1/8" Long, 18-8 | 18-8 SSSL | 1 |
| 2 | D1500149 | OMC, EQ. STOP, THUMB SCREW | 18-8 SSSL | 1 |
| 1 | D1201440 | THREADED BUMPER, EQ-STOP, OMC, aLIGO | SEMITRON ESd 480 | 1 |

PARTS LIST

| | | | | | | | |
|--|--|--|--|---|--|--|--|
| NOTES AND TOLERANCES: (UNLESS OTHERWISE SPECIFIED) | | | | CALIFORNIA INSTITUTE OF TECHNOLOGY MASSACHUSETTS INSTITUTE OF TECHNOLOGY | | PART NAME KNOB, EQ-STOP, OMC, aLIGO | |
| DIMENSIONS ARE IN INCHES | | | | SYSTEM ADVANCED LIGO | | SUB-SYSTEM ISC | |
| TOLERANCES: .XX ± .XXX ± | | | | DESIGNER SBARNUM 14 NOV 2012 | | SIZE DWG. NO. B D1201474 | |
| ANGULAR ± * | | | | MATERIAL N/A | | DRAFTER SBARNUM 16 NOV 2012 | |
| FINISH N/A μinch | | | | CHECKER JLEWIS 16 NOV 2012 | | REV. v2 | |
| NEXT ASSY D1201441 | | | | APPROVAL PFRITSHCEL 16 NOV 2012 | | SCALE: 3:1 PROJECTION: SHEET 1 OF 1 | |

D1201474 KNOB, EQ-STOP, OMC, aLIGO, PART PDM REV: X-008, DRAWING PDM REV: X-005