

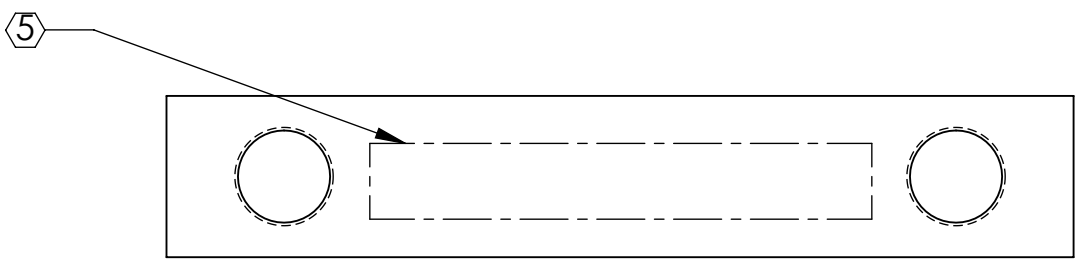
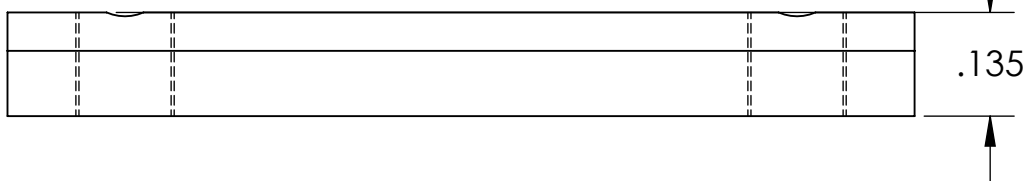
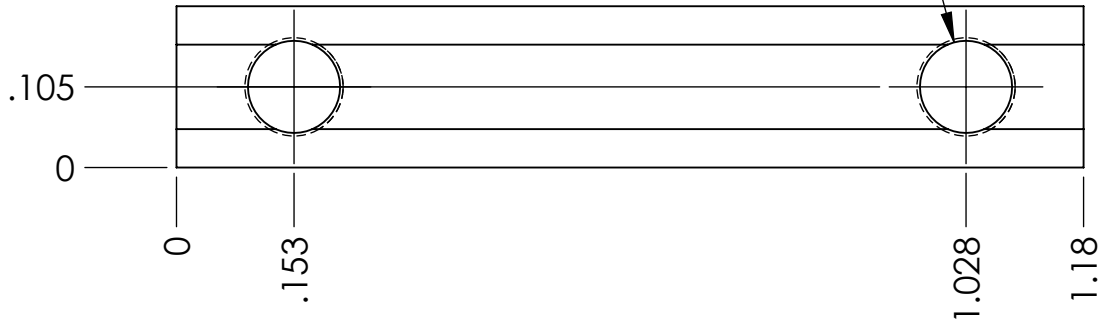
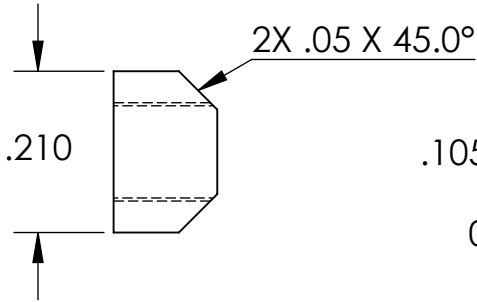
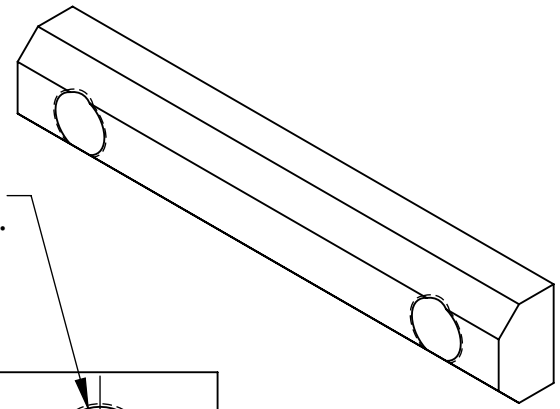
NOTES CONTINUED:

5. SCRIBE, ENGRAVE, LASER MARK OR MECHANICALLY STAMP (NO DYES OR INKS) A UNIQUE THREE DIGIT SERIAL NUMBER & REVISION NUMBER ON EACH PART. SERIAL NUMBERS START AT 001 FOR THE FIRST ARTICLE AND PROCEED CONSECUTIVELY. BAG AND TAG PARTS WITH THEIR DRAWING PART NUMBER, REVISION, VARIANT OR "TYPE" (IF APPLICABLE), AND QUANTITY. IF PARTS ARE TOO SMALL TO SCRIBE, BAGGING AND TAGGING ALONE IS SUFFICIENT.  
 EXAMPLE (PART): 001-v1  
 EXAMPLE (TAG): DXXXXXX-VY, TYPE-XX, QTY: TBD

- 6. APPROXIMATE WEIGHT = 0.59 g.
- 7. MACHINE ALL SURFACES TO REMOVE OXIDES AND MILL FINISH. USE OF ABRASIVE REMOVAL TECHNIQUES IS NOT ALLOWED. REFER TO LIGO-E0900364
- 8. ALL PARTS SHALL BE MANUFACTURED IN ACCORDANCE WITH LIGO SPECIFICATION E0900364. MACHINE ALL PARTS DRY (NO COOLANT)
- 9. ALL MATERIAL IS TO BE VIRGIN MATERIAL (i.e. NO WELD REPAIRS, PLUGS OR RECYCLED MATERIAL). NO REPAIRS SHALL BE MADE UNLESS APPROVED IN ADVANCE, AND IN WRITING, BY LIGO LABORATORY. REFER TO LIGO-E0900364.

REV.	DATE	DCN #	DRAWING TREE #
v1	13 NOV 2012	E1200997-x0	-
-	-	-	-
-	-	-	-

2X  $\phi$  .12 THRU ALL  
 TAP FOR #4-40 HELICOIL INSERT = 1.0 \* DIA.



NOTES AND TOLERANCES: (UNLESS OTHERWISE SPECIFIED)

DIMENSIONS ARE IN INCHES

TOLERANCES:  
 .XX ± .01  
 .XXX ± .005

ANGULAR ± 0.5°

- 1. INTERPRET DRAWING PER ASME Y14.5-1994.
- 2. REMOVE ALL SHARP EDGES, .005-.015. FOR MACHINED PARTS.
- 3. DO NOT SCALE FROM DRAWING.
- 4. SEE NOTE 8

MATERIAL PEEK 450G  
 FINISH 63 μinch



SYSTEM ADVANCED LIGO SUB-SYSTEM ISC  
 NEXT ASSY D1201273 & D1201279

PART NAME		aLIGO OMC PD Mount Nut Plate	
DESIGNER	SWALDMAN	DEC 2011	SIZE DWG. NO.
DRAFTER	SBARNUM	26 JAN 2012	A D1201466
CHECKER	SWALDMAN		REV. v1
APPROVAL	PRITCHEL	SCALE: 4:1	PROJECTION: