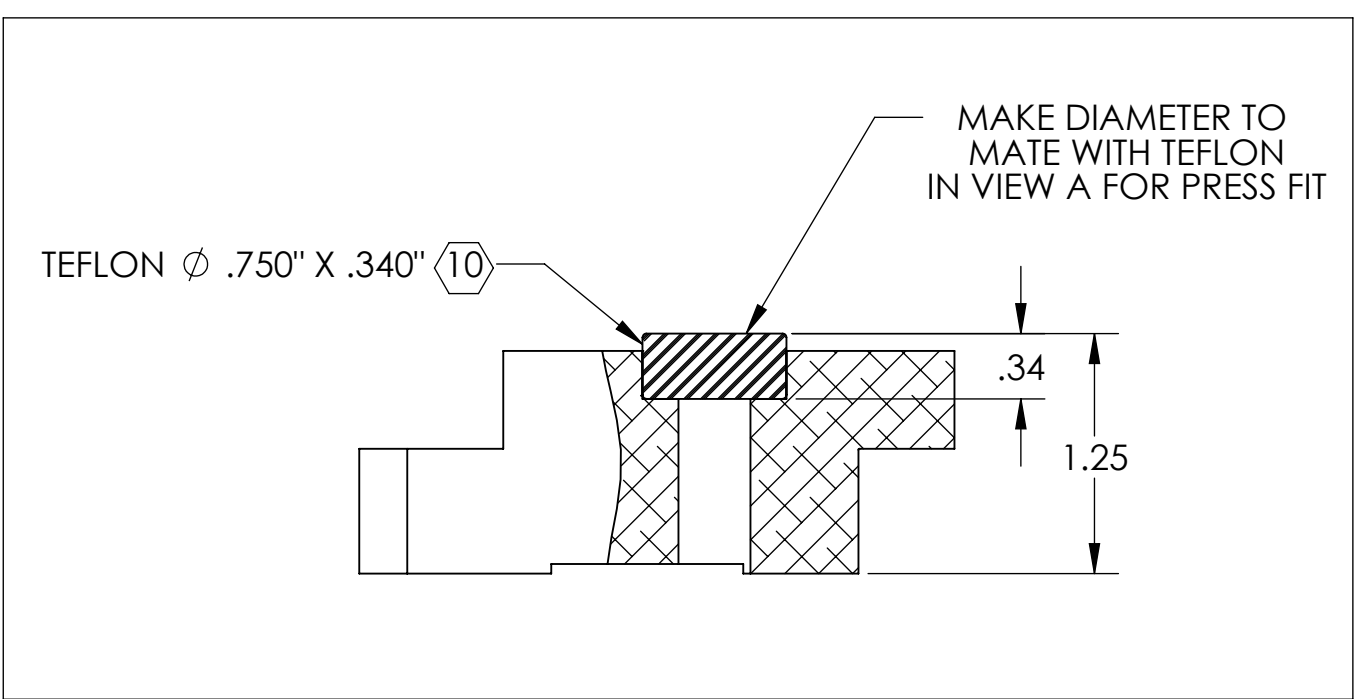
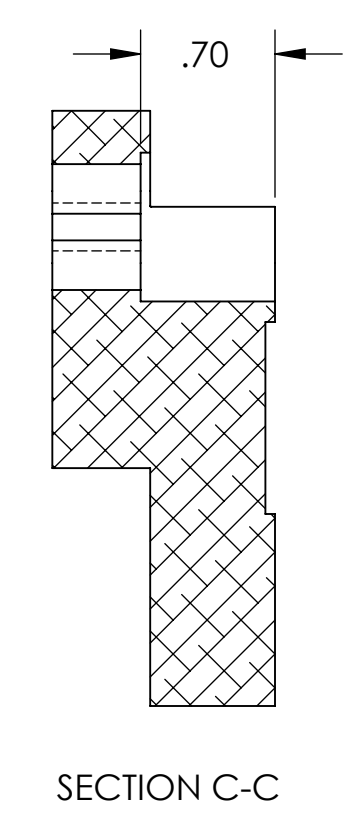
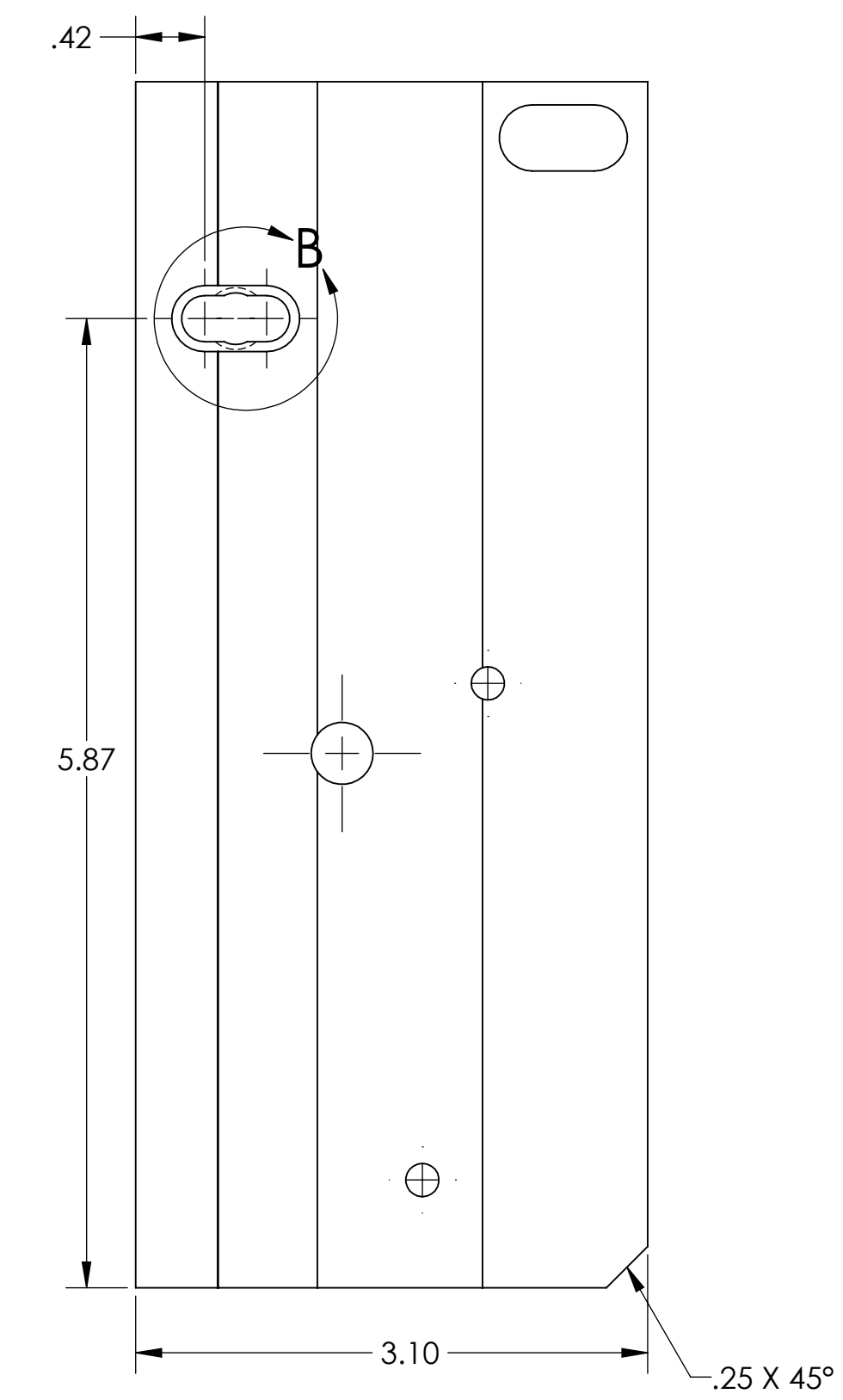
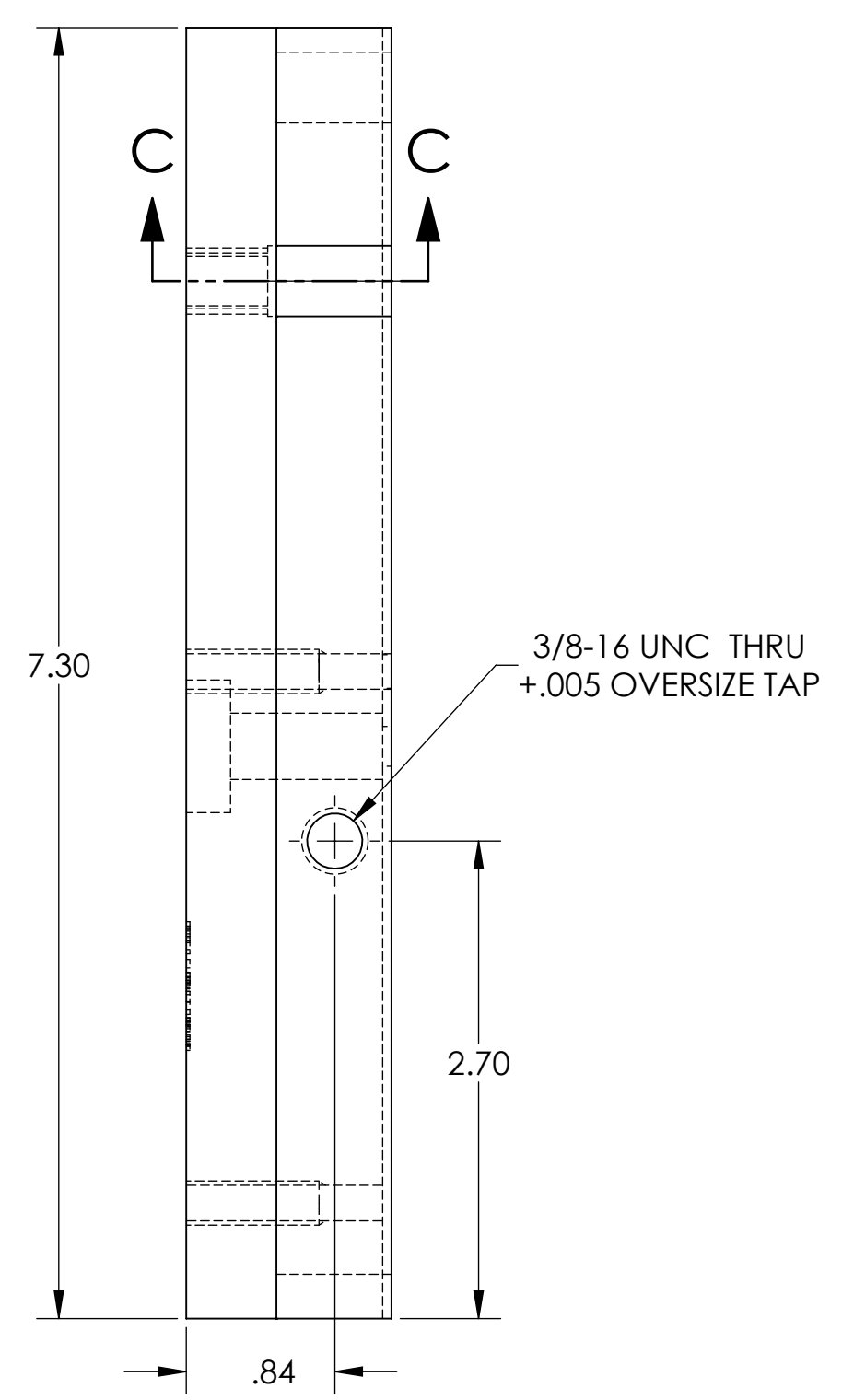
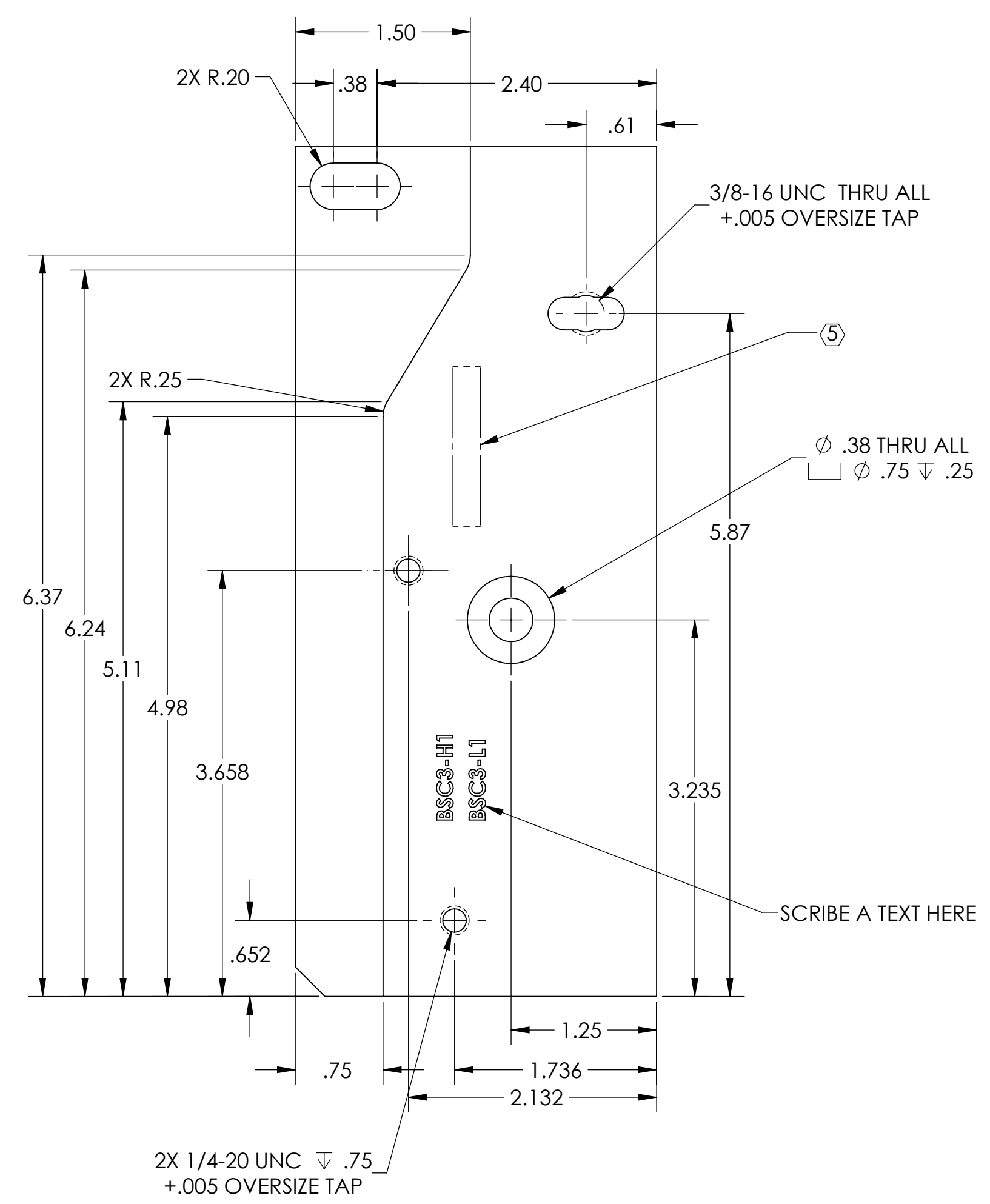
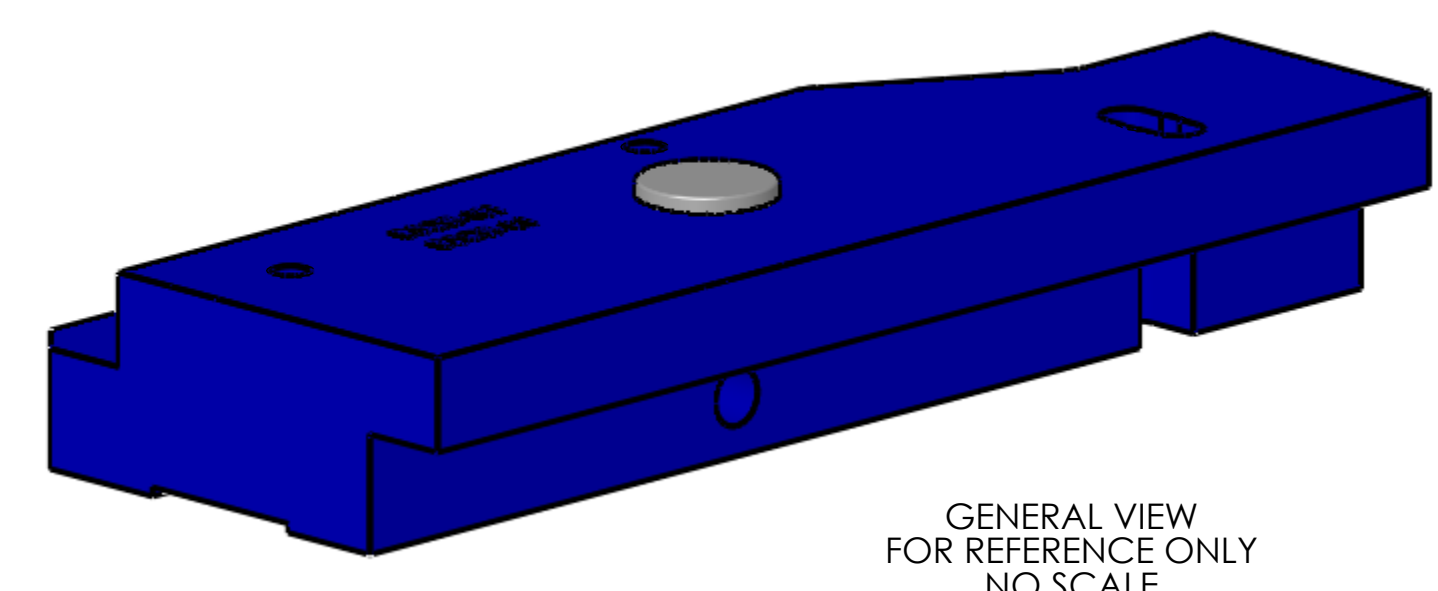
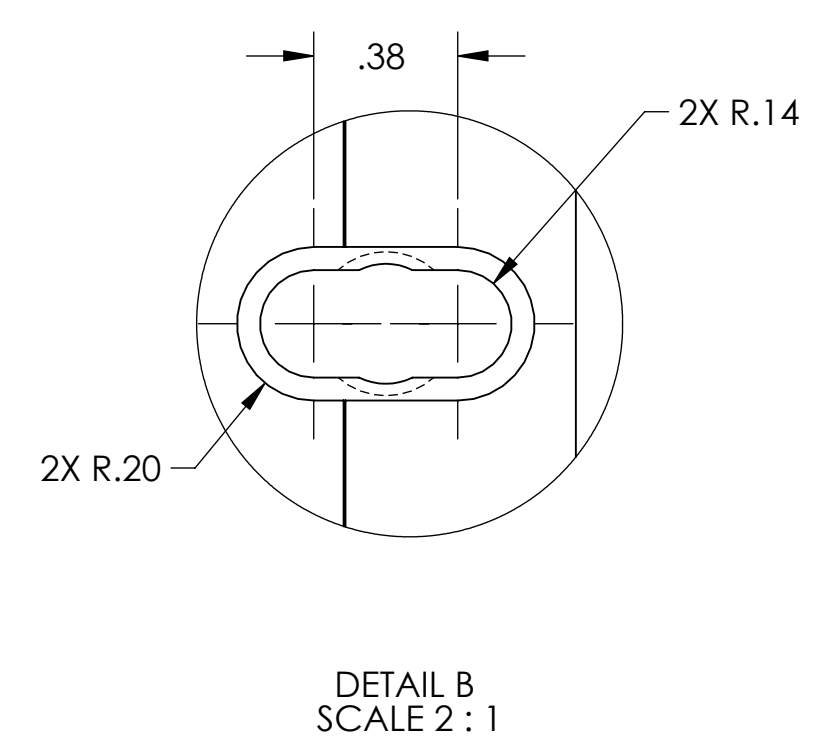
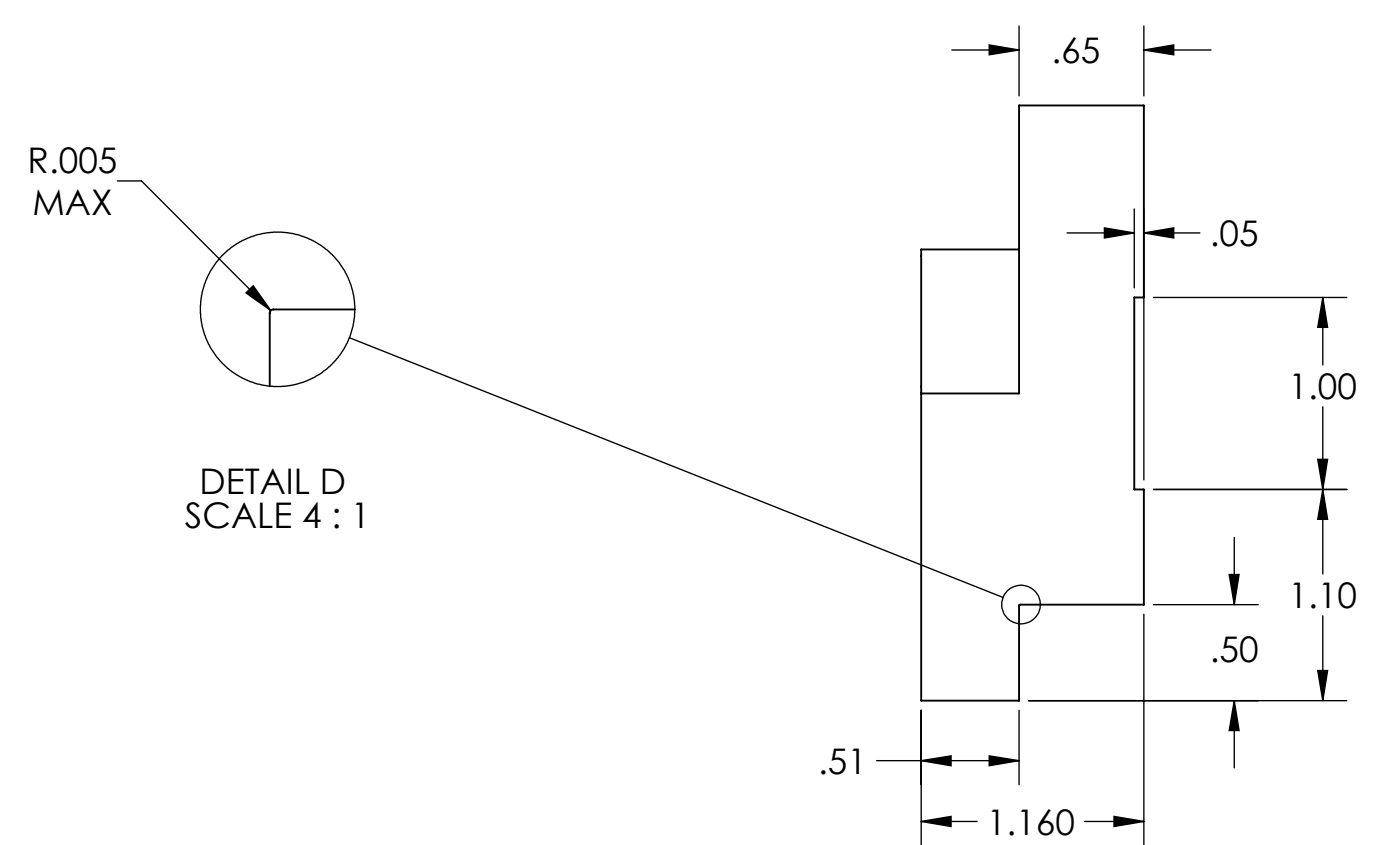


NOTES CONTINUED:
 5. SCRIBE, ENGRAVE (A VIBRATORY TOOL MAY BE USED), LASER MARK OR MECHANICALLY STAMP (NO INKS OR DYES) DRAWING PART NUMBER, REVISION (AND VARIANT OR 'TYPE' IF APPLICABLE) ON NOTED SURFACE OF PART FOLLOWED ON THE NEXT LINE WITH A THREE DIGIT SERIAL NUMBER. SERIAL NUMBERS START AT 001 FOR THE FIRST ARTICLE AND PROCEED CONSECUTIVELY. USE MINIMUM 0.12" HIGH CHARACTERS, UNLESS THE SIZE OF THE PART DICTATES SMALLER CHARACTERS. EXAMPLE: DXXXXXX-VY, TYPE-XX, S/N XXX

- 6. APPROXIMATE WEIGHT = 1.929 LBS.
- 7. MACHINE ALL SURFACES TO REMOVE OXIDES AND MILL FINISH. USE OF ABRASIVE REMOVAL TECHNIQUES IS NOT ALLOWED. REFER TO LIGO-E0900364
- 8. ALL PARTS SHALL BE MANUFACTURED IN ACCORDANCE WITH LIGO SPECIFICATION E0900364.
- 9. ALL MATERIAL IS TO BE VIRGIN MATERIAL (I.E. NO WELD REPAIRS, PLUGS OR RECYCLED MATERIAL). NO REPAIRS SHALL BE MADE UNLESS APPROVED IN ADVANCE, AND IN WRITING, BY LIGO LABORATORY. REFER TO LIGO-E0900364.

10. TEFLON: PFA 440 HP (PRESHRUNK)

REV.	DATE	DCN #	DRAWING TREE #
v1	12 NOV 2012	E1100355	-
-	-	-	-
-	-	-	-



NOTES AND TOLERANCES: (UNLESS OTHERWISE SPECIFIED)				PART NAME	
DIMENSIONS ARE IN INCHES				ACB_STAGE ZERO-BSC3_INCLAMP, END	
TOLERANCES: .XX ± .01 .XXX ± .005				DESIGNER TQ. NGUYEN 9 NOV 2012	
ANGULAR ± 1.0°				SIZE DWG. NO. D D1201454	
MATERIAL 6061-T6 Al				FINISH 63 μinch	
NEXT ASSY D1101957				APPROVAL M. SMITH	
SYSTEM CALIFORNIA INSTITUTE OF TECHNOLOGY MASSACHUSETTS INSTITUTE OF TECHNOLOGY SUB-SYSTEM ADVANCED LIGO AOS				DESIGNER TQ. NGUYEN 9 NOV 2012 DRAFTER TQ. NGUYEN 12 NOV 2012 CHECKER L. AUSTIN APPROVAL M. SMITH	
SCALE: 1:1				PROJECTION:	
SHEET 1 OF 1				REV. v1	

D:\201454_ACB_StageZero-BSC3_Inclamp_End_PART.PDM.REV.X-002.DRAWING.PDM.REV.X-004