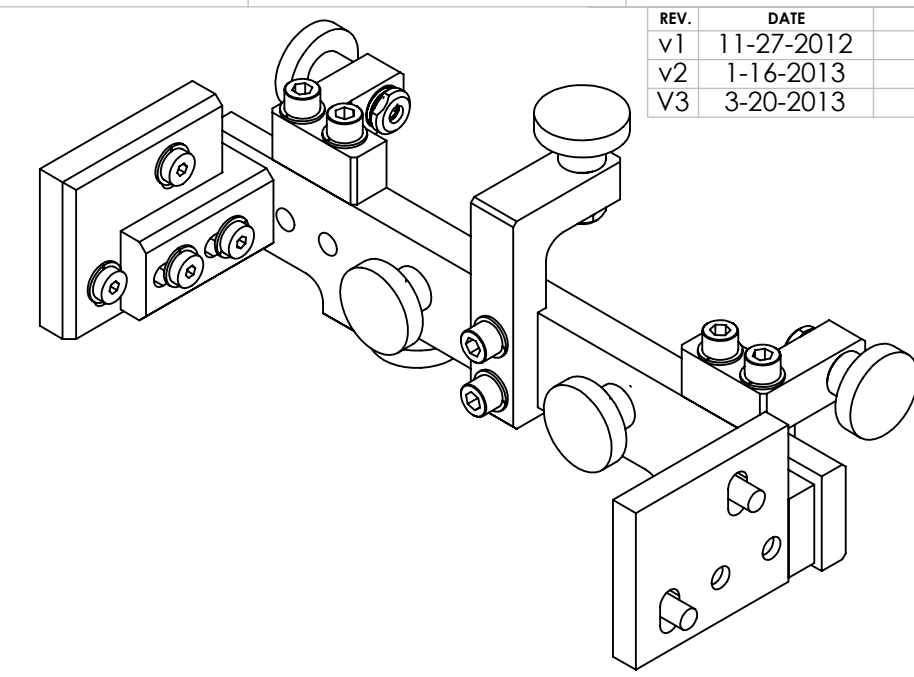
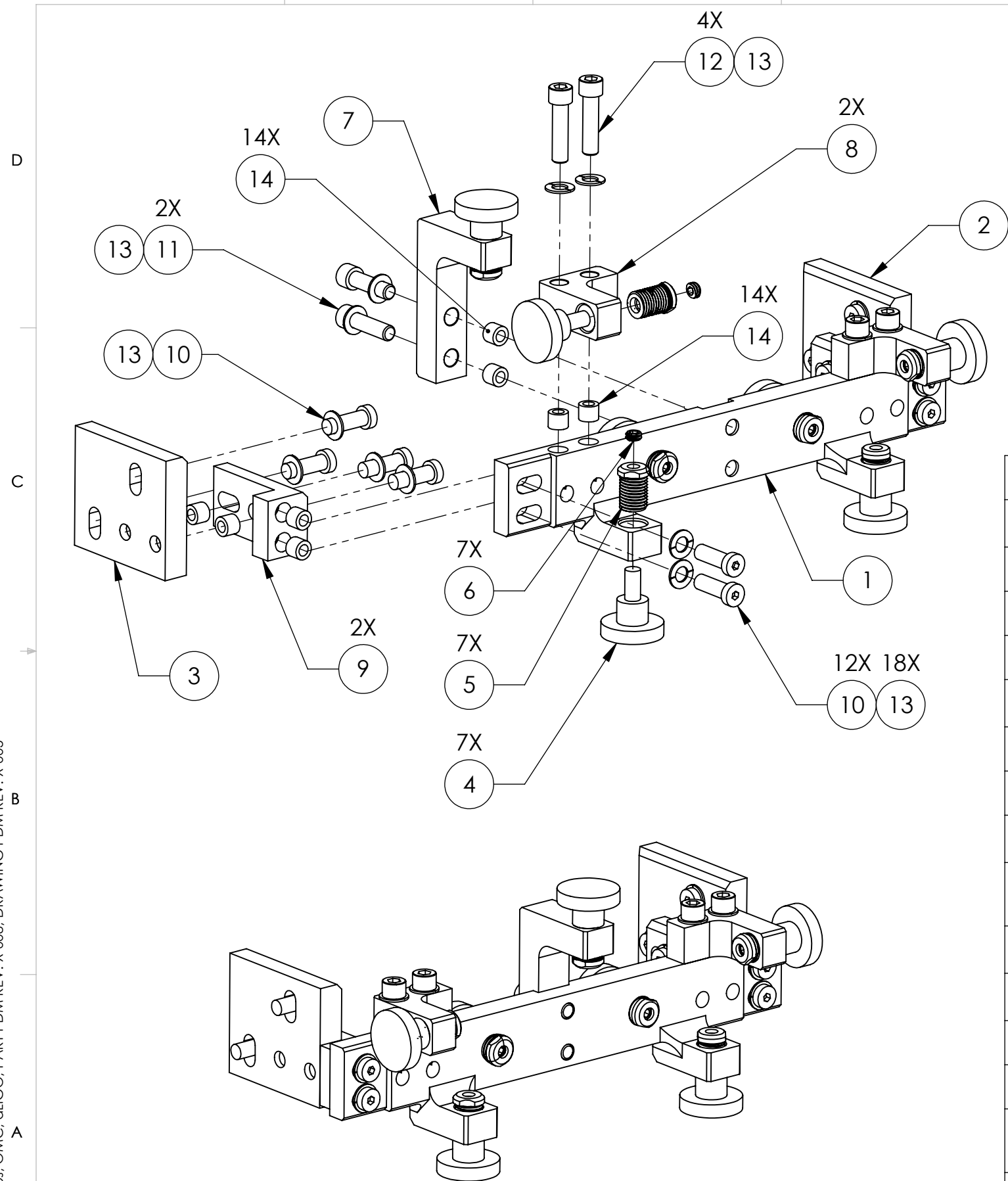


D1201441 EQ-Stops, OMC, aLIGO, PART PDM REV: X-008, DRAWING PDM REV: X-005

REV.	DATE	DCN #	DRAWING TREE #
v1	11-27-2012	-	-
v2	1-16-2013	E1201029	-
v3	3-20-2013	E1300085	-

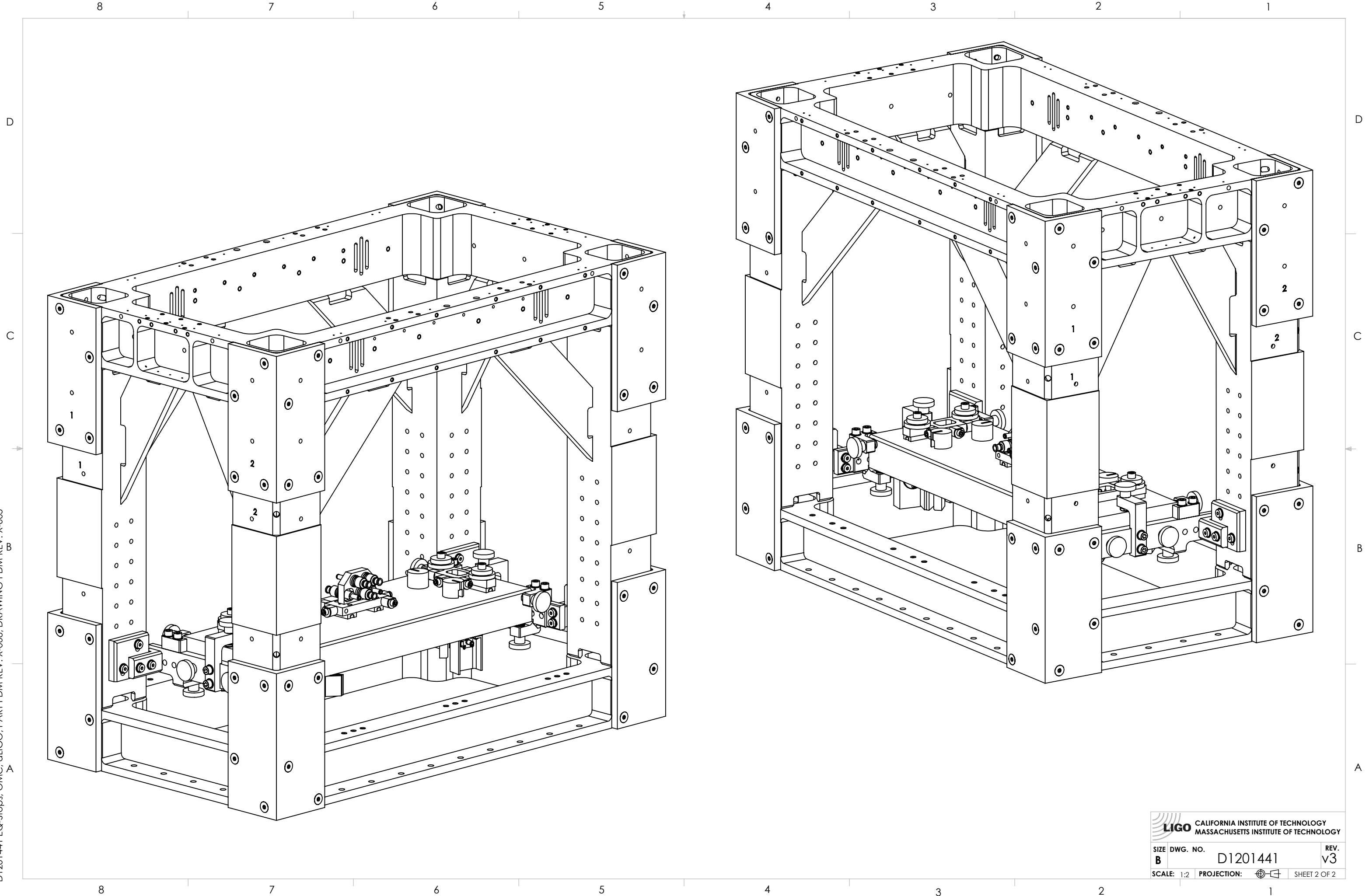


ITEM NO.	PART NUMBER	DESCRIPTION	MATERIAL	REQ	SPARE	TOTAL
14		Thread Insert	Helicoil 1/4"-20 x 1Dia Nitronic60	14		14
13	UC_COMPONENTS_WF V-25	Vented Washer, .255 ID X .468 OD X .032 THK #1/4	18-8 SSTL	18		18
12	HOLOKROME_78062	SHCS, 1/4-20 x 1.0"	18-8 SS	4		4
11	HOLOKROME_78060	SHCS, 1/4"-20x.875"	18-8 SS	2		2
10	McMASTER_93615A415	LSHCS 1/4"-20 x 3/4" 18-8	18-8 SSTL	12		12
9	D1201478	HORIZONTAL ADJUST, EQ-STOP, OMC, aLIGO	6061-T6 Al	2		2
8	D1201476	SIDE BRACKET, EQ-STOP, OMC, aLIGO	6061-T6 Al	2		2
7	D1201475	TOP BRACKET, EQ-STOP, OMC, aLIGO	6061-T6 Al	1		1
6	McMaster 91318A410	Hollow-Lock Set Screw, 1/4"-20 X 1/8" Long, 18-8	18-8 SSTL	7		7
5	D1201440	THREADED BUMPER, EQ-STOP, OMC, aLIGO	SEMITRON Esd 480	7		7
4	McMaster 91830A569	Knurled Head Thumb Screw, 1/4-20x 1/2", 1" HEAD, 18-8 SST	18-8 SSTL	7		7
3	D1201473	RIGHT, SUPPORT, EQ-STOP, OMC, aLIGO	6061-T6 Al	1		1
2	D1201472	LEFT, SUPPORT, EQ-STOP, OMC, aLIGO	6061-T6 Al	1		1
1	D1201471	MAIN BAR, EQ-STOP, OMC, aLIGO	6061-T6 Al	1		1
PARTS LIST						

NOTES AND TOLERANCES: (UNLESS OTHERWISE SPECIFIED)

DIMENSIONS ARE IN TOLERANCES: .XX ± .XXX ± ANGULAR ± °	MATERIAL: N/A FINISH: N/A μinch	CALIFORNIA INSTITUTE OF TECHNOLOGY MASSACHUSETTS INSTITUTE OF TECHNOLOGY	PART NAME: EQ-Stops, OMC, aLIGO SYSTEM: ADVANCED LIGO SUB-SYSTEM: ISC NEXT ASSY: D0900295
		DESIGNER: SBARNUM 15 NOV 2012 DRAFTER: SBARNUM 16 NOV 2012 CHECKER: SBARNUM 16 NOV 2012 APPROVAL: PFRITSCHEL 16 NOV 2012	SIZE: DWG. NO. B D1201441 REV. v3 SCALE: 1:2 PROJECTION: SHEET 1 OF 2

D1201441 EQ-Stops: OMC, cLIGO, PART PDM REV: X-008, DRAWING PDM REV: X-005



 CALIFORNIA INSTITUTE OF TECHNOLOGY MASSACHUSETTS INSTITUTE OF TECHNOLOGY		
SIZE	DWG. NO.	REV.
B	D1201441	v3
SCALE: 1:2	PROJECTION:	SHEET 2 OF 2