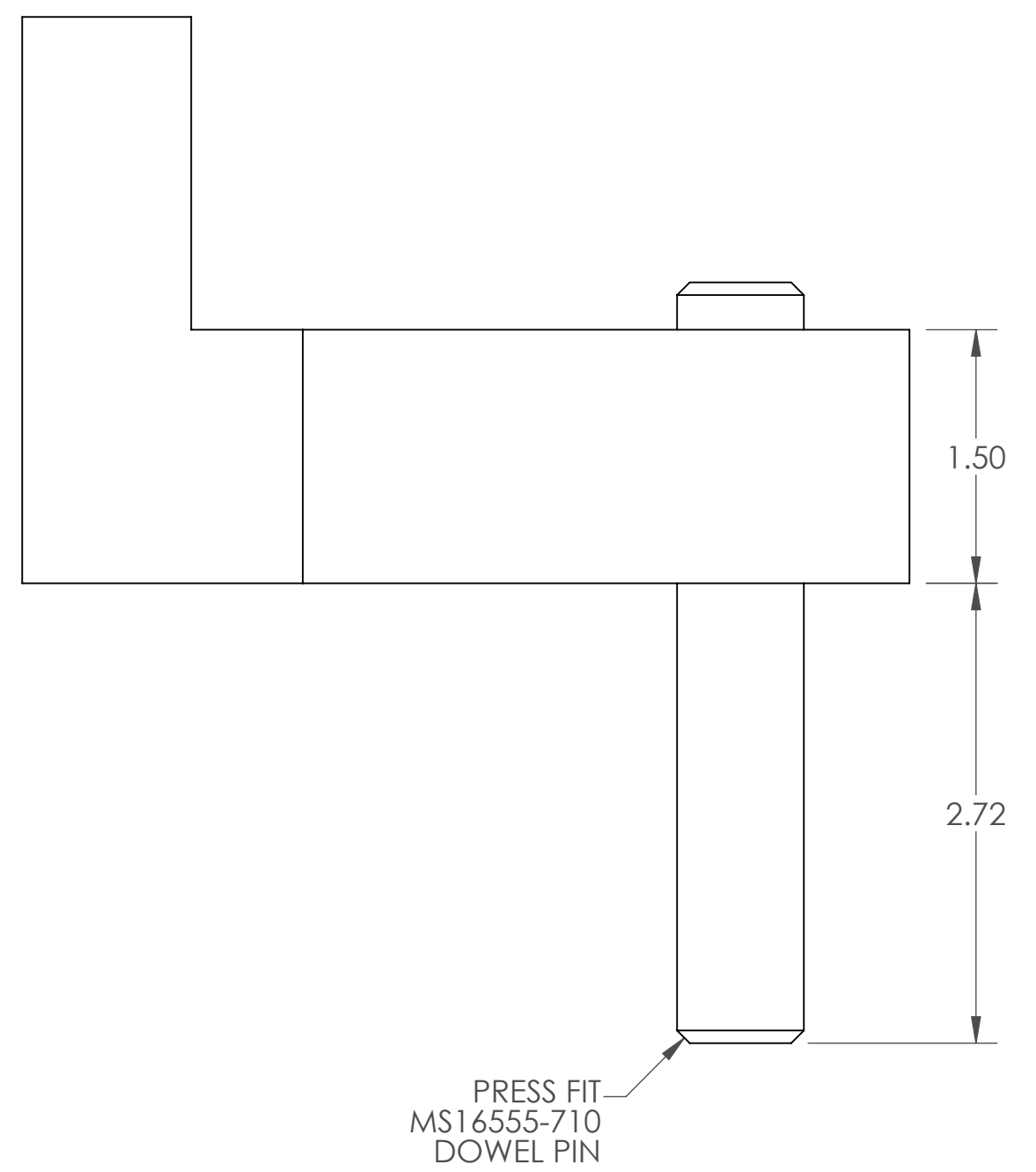
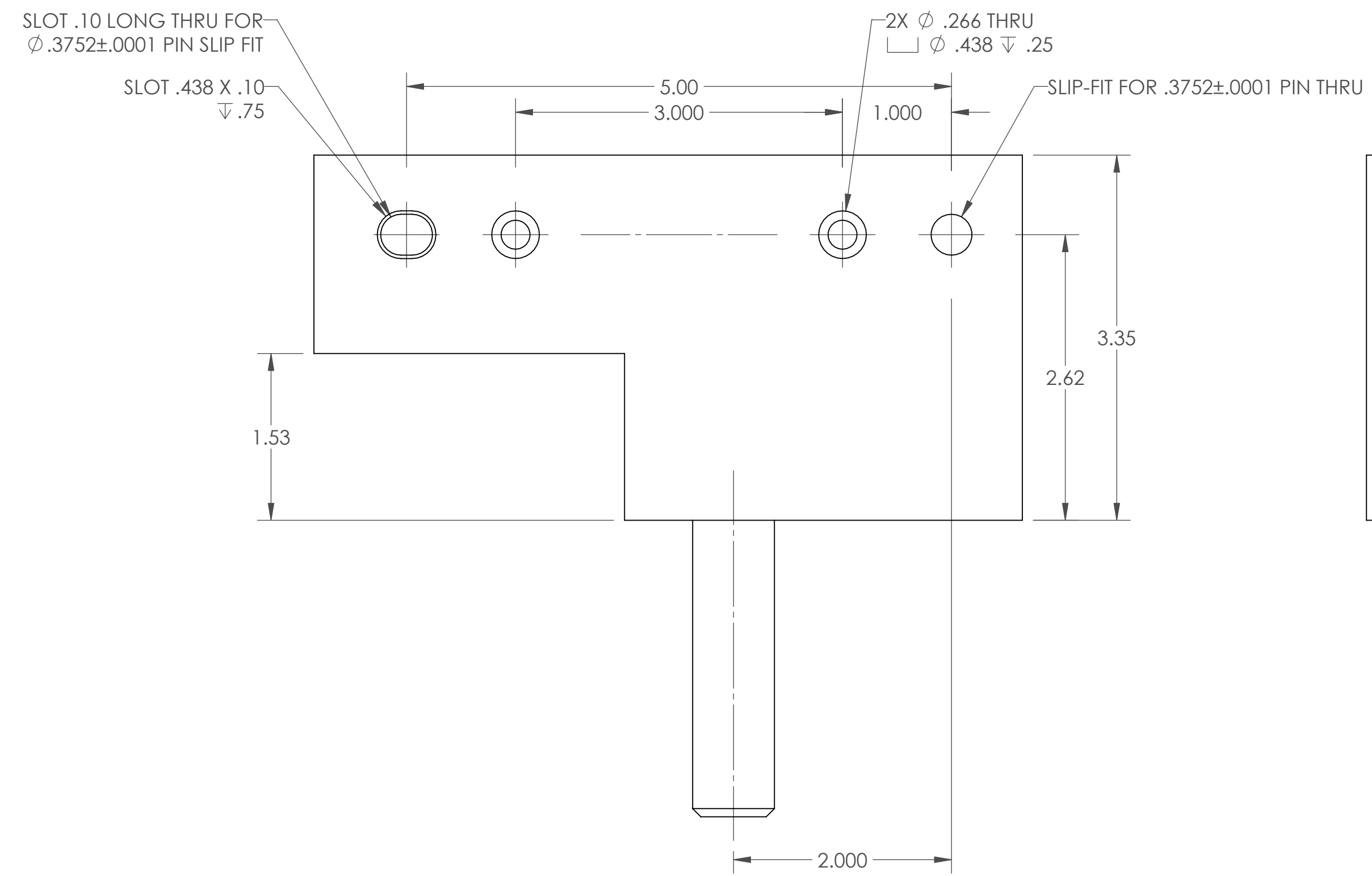
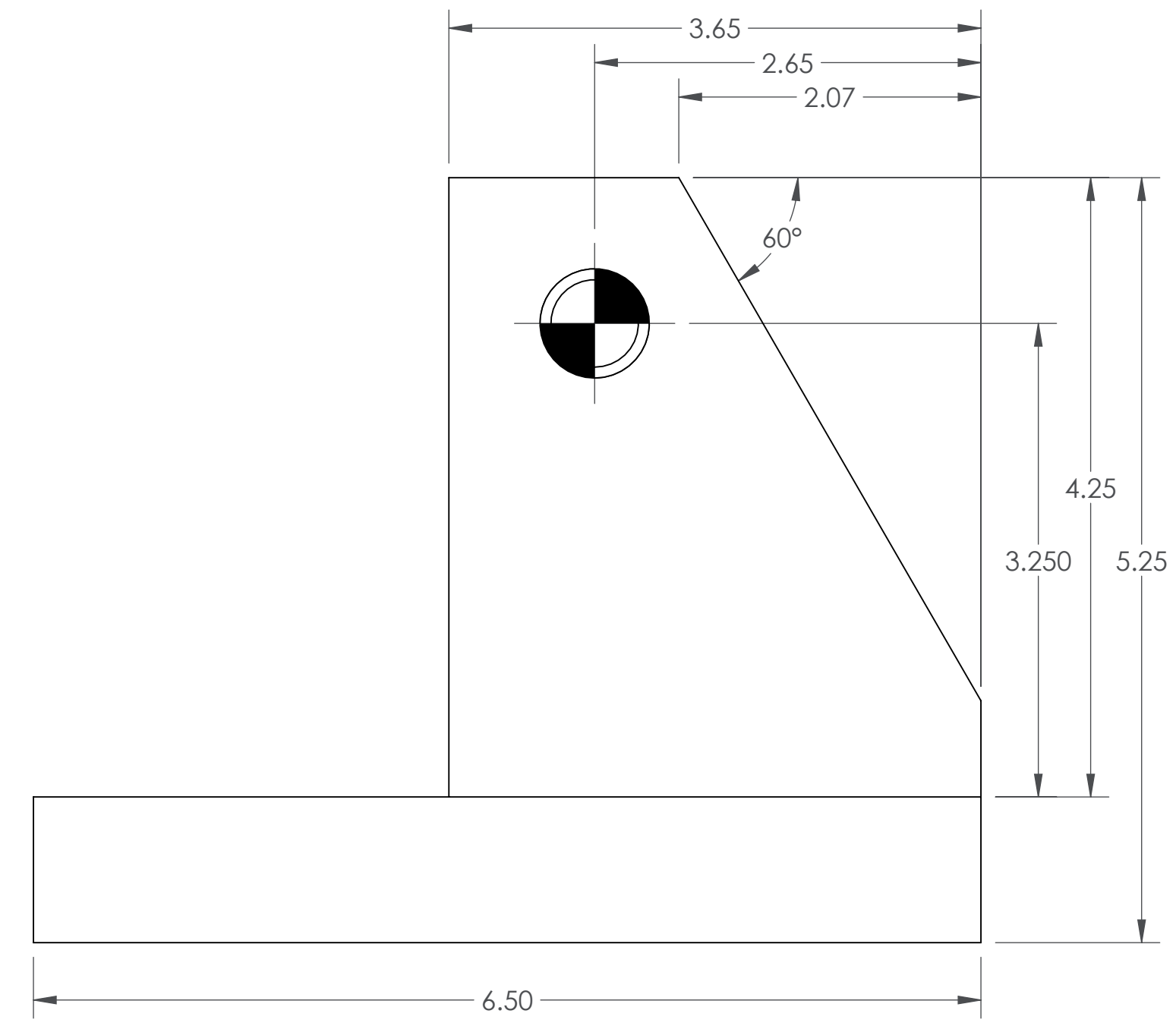
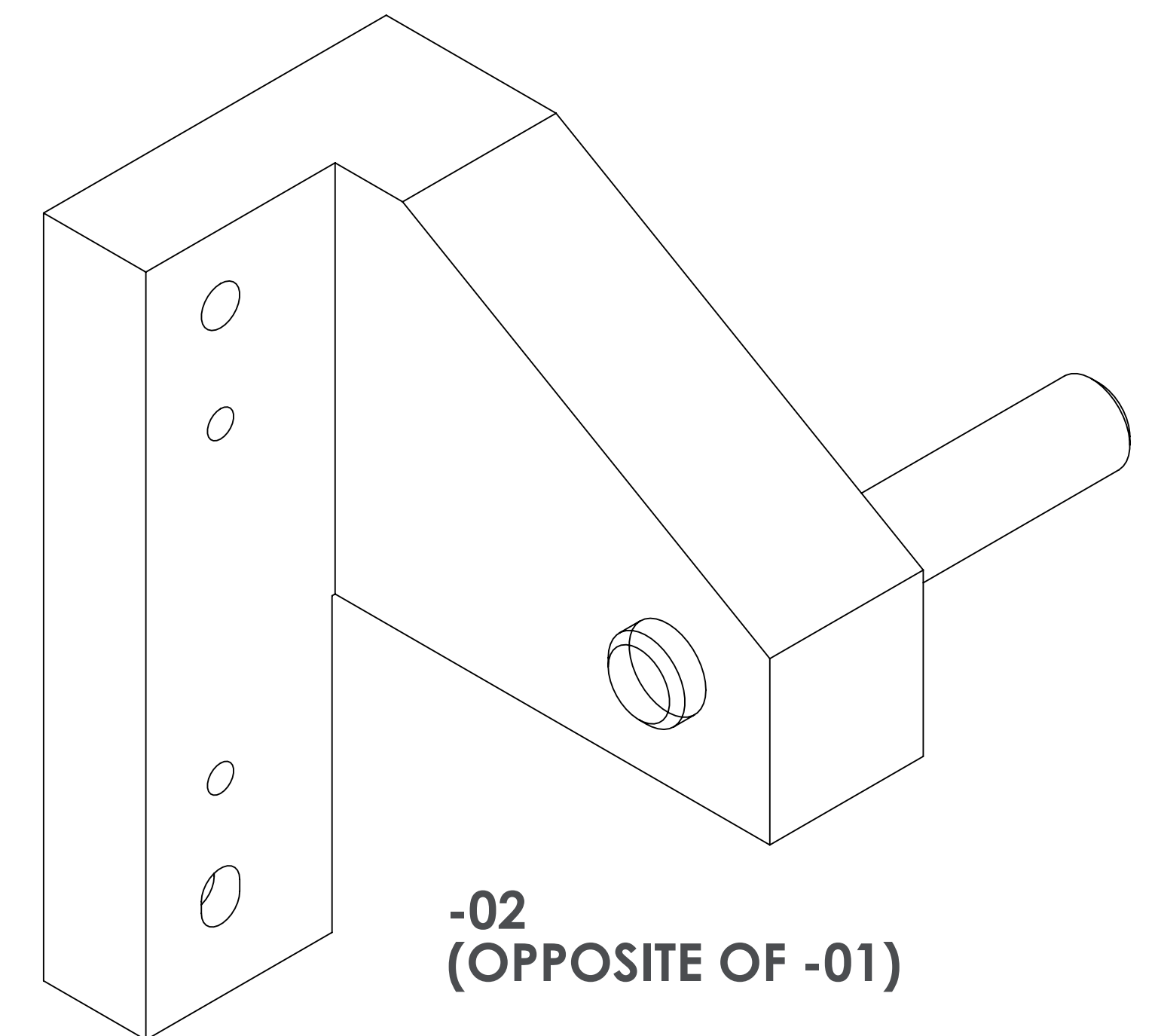
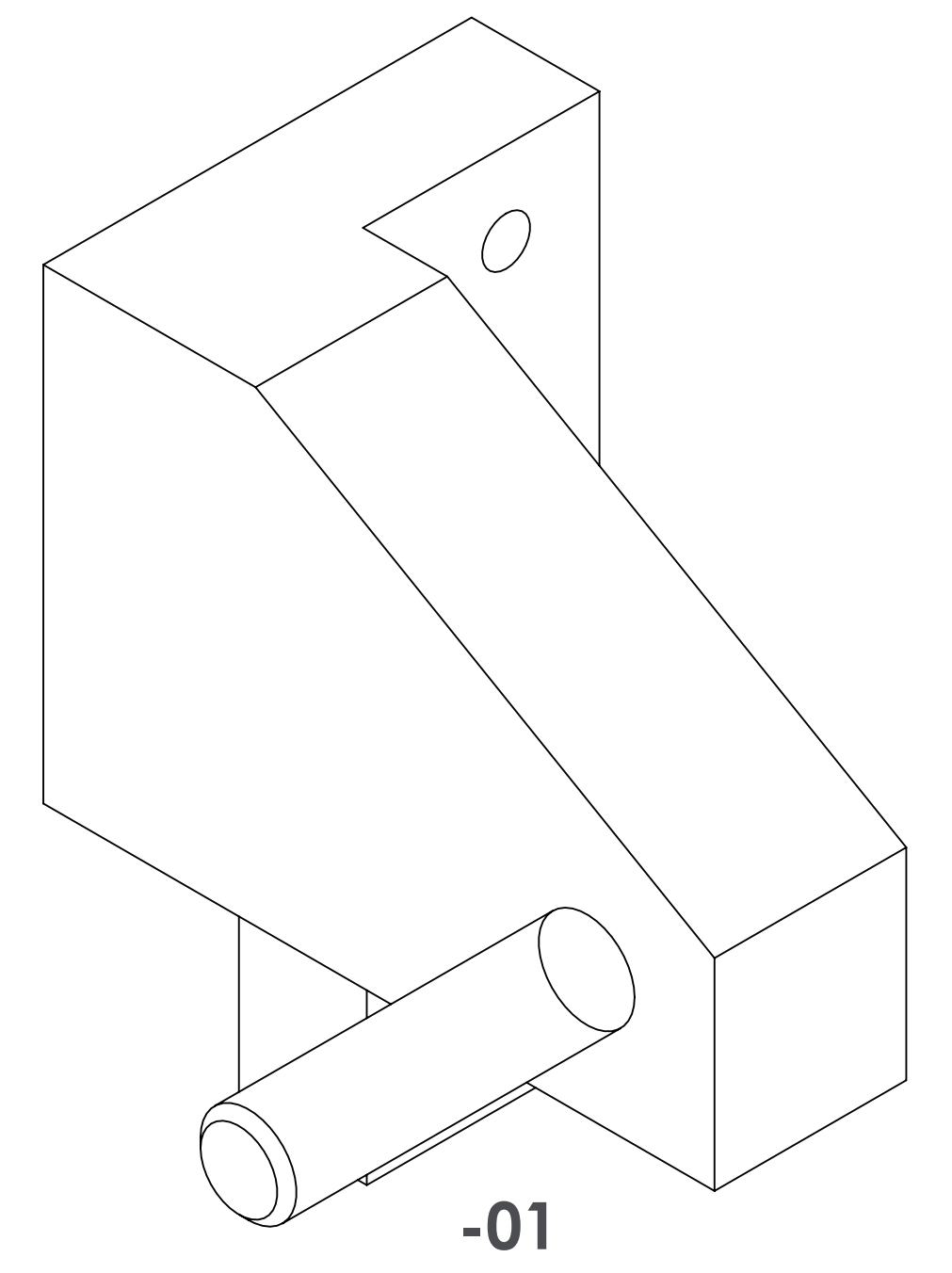


NOTES (CONTINUED):  
4. WEIGHT: 3.55 LB.



**-01 SHOWN  
-02 OPPOSITE  
(SEE ISOMETRIC VIEWS)**

REV.	DATE	DCN #	BOM #
v1	18 DEC 2012	-	-



NOTES AND TOLERANCES: (UNLESS OTHERWISE SPECIFIED)				LIGO CALIFORNIA INSTITUTE OF TECHNOLOGY MASSACHUSETTS INSTITUTE OF TECHNOLOGY		PART NAME dLIGO PCAL TOOLING, PERISCOPE PRE-ALIGNMENT TIP AXIS						
DIMENSIONS ARE IN INCHES				SYSTEM ADVANCED LIGO		SUB-SYSTEM AOS		DESIGNER R. SAVAGE	DATE 19 OCT 2012	SIZE D	DWG. NO. D1201413	REV. v1
TOLERANCES: .XX ± .02 .XXX ± .005				MATERIAL ALUMINUM TOOLING PLATE, 3/8"		FINISH 63 μinch Ra MAX		CHECKER C. CONLEY	DATE 18 DEC 2012	SCALE: NONE PROJECTION:		
ANGULAR ± 1.0°				NEXT ASSY D1201412		APPROVAL		SHEET 1 OF 1				

D:\2014\13 dLIGO PCAL Tooling\_Periscope Pre-Alignment Tip Axis\_PART PDM\_REV: X-01.dwg DRAWING PDM\_REV: X-003