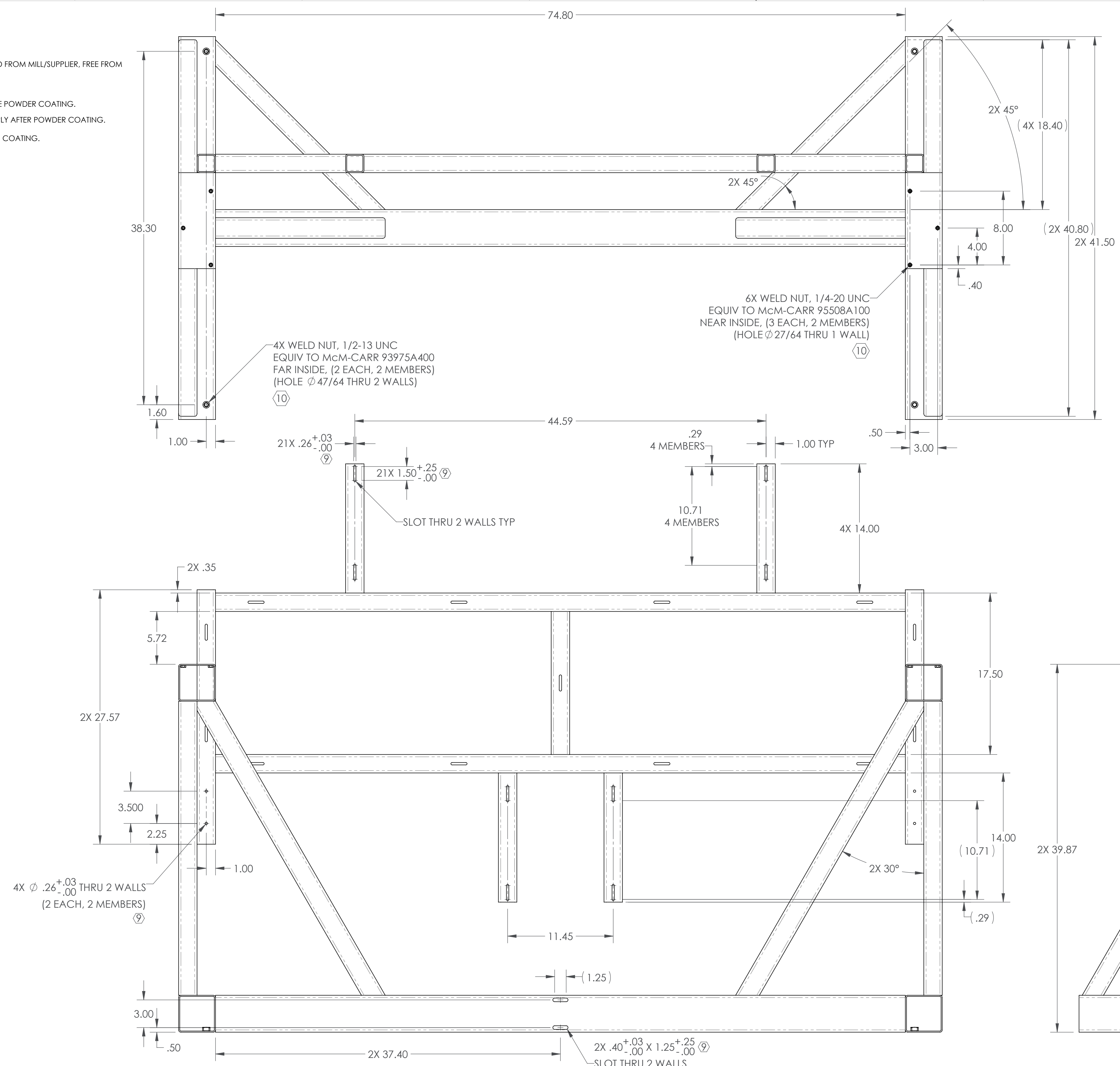
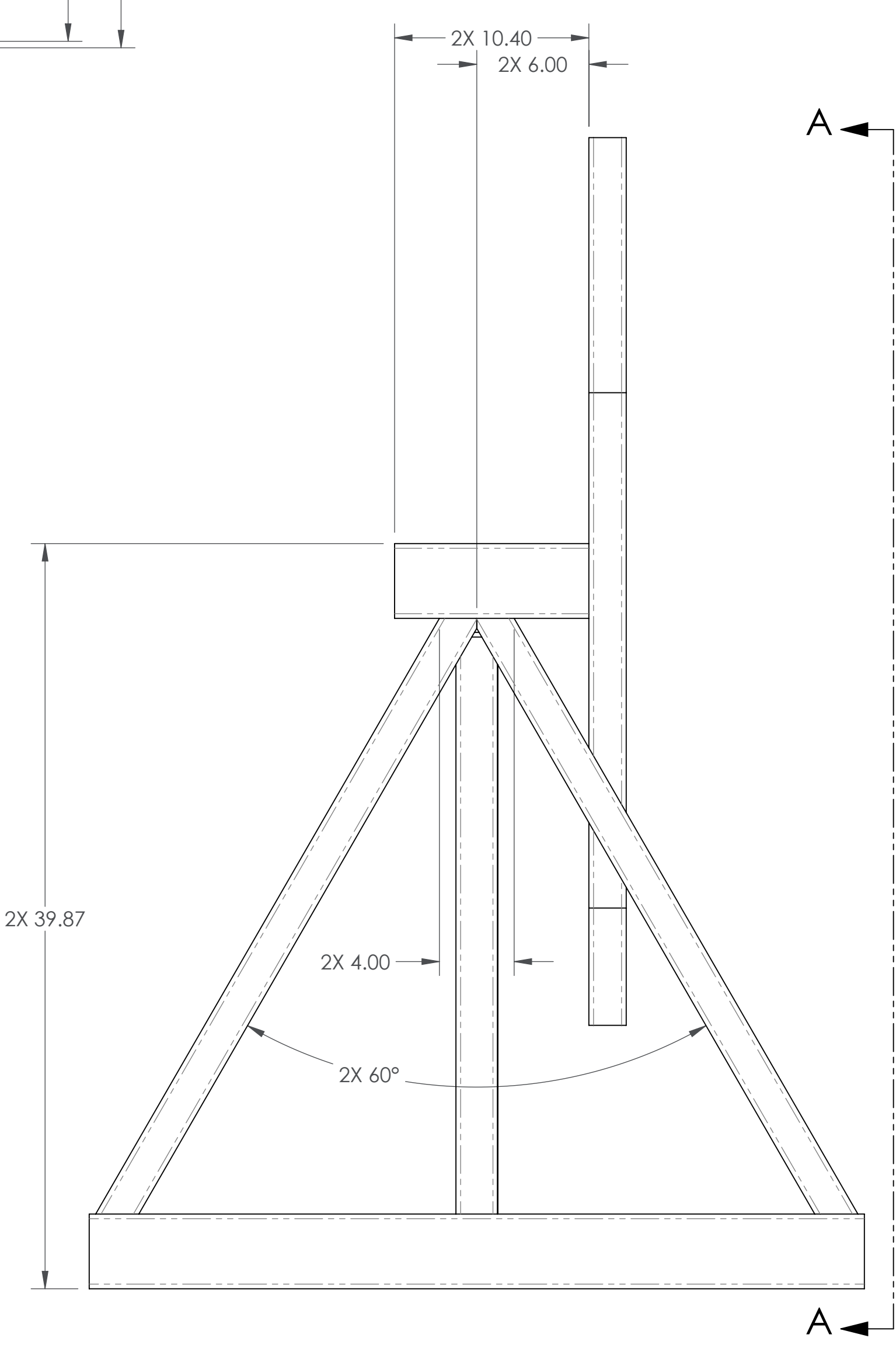
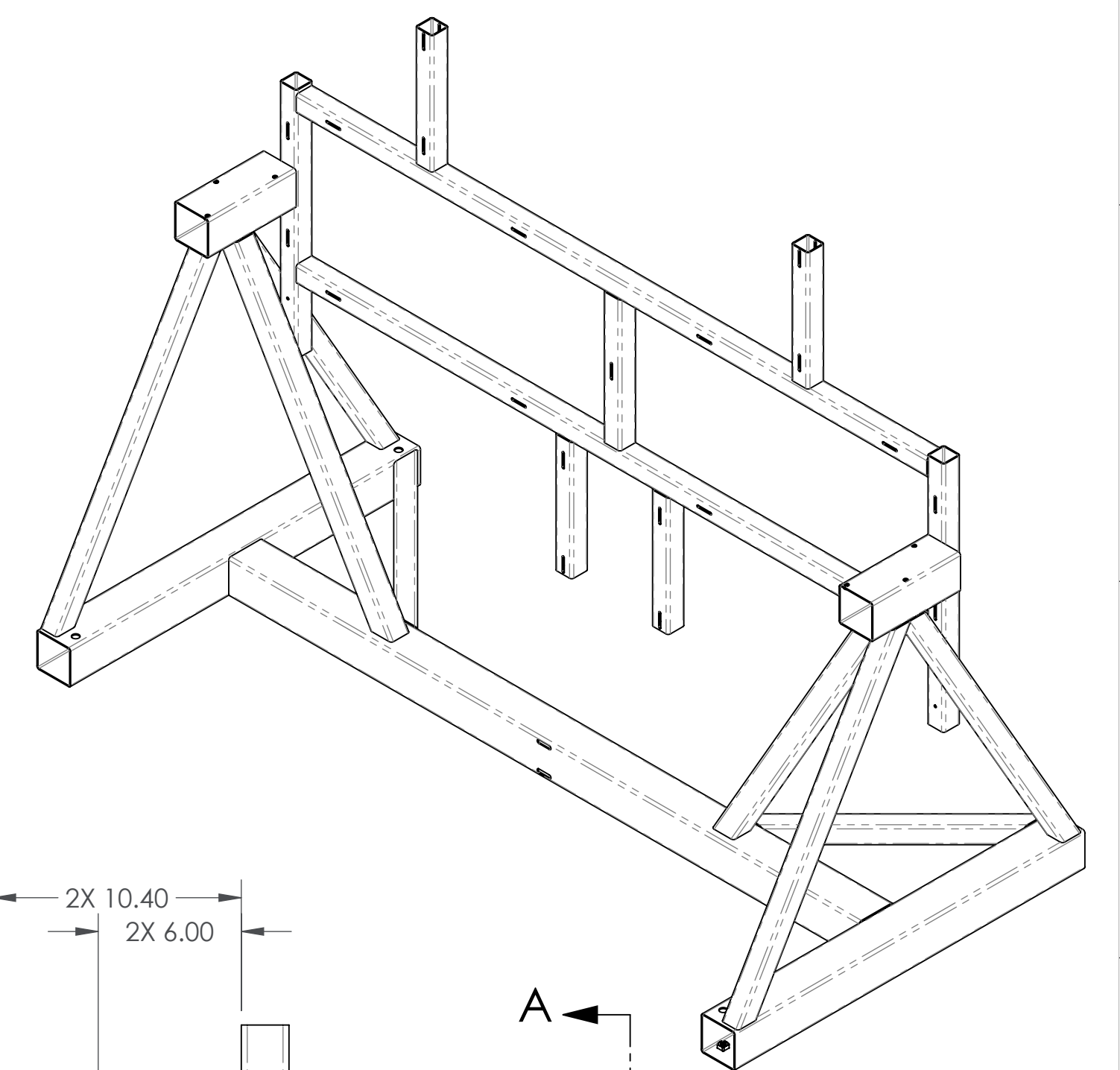


- NOTES (CONTINUED):**
- 4. WEIGHT: 234.8 LB.
 - 5. MATERIAL- 1/8" WALL STEEL TUBE
SMALL SECTIONS: 2" X 2"
LARGE SECTIONS: 4" X 4"
 - 6. SURFACE FINISH TO BE AS-PROCESSED FROM MILL/SUPPLIER, FREE FROM SCRATCHES OR GOUGES.
 - 7. FINISH- POWDER COAT WHITE.
 - 8. GENERAL DIMENSIONS APPLY BEFORE POWDER COATING.
 - 9. ALL SLOT/HOLE SIZE DIMENSIONS APPLY AFTER POWDER COATING.
 - 10. MASK ALL THREADS BEFORE POWDER COATING.



REV.	DATE	DCN #	BOM #
v1	30 NOV 2012	-	-

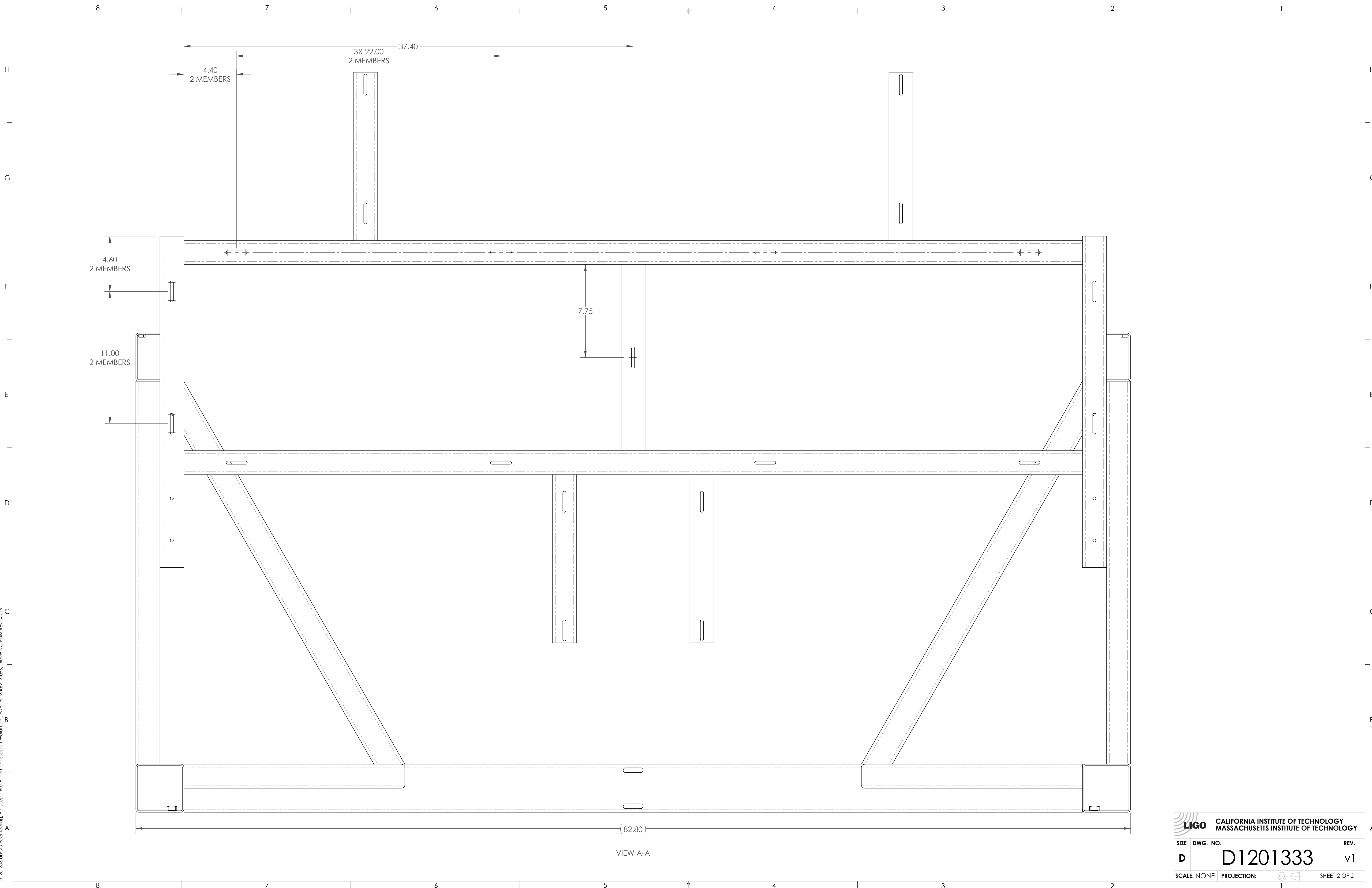


NOTES AND TOLERANCES: (UNLESS OTHERWISE SPECIFIED)	
1. INTERPRET DRAWING PER ASME Y14.5-1994.	
2. REMOVE ALL SHARP EDGES, .03 MIN.	
3. DO NOT SCALE FROM DRAWING.	
DIMENSIONS ARE IN INCHES	
TOLERANCES: .XX ± .03 .XXX ± .005	
ANGULAR ± 1.0°	
MATERIAL	FINISH
5	6/7

CALIFORNIA INSTITUTE OF TECHNOLOGY MASSACHUSETTS INSTITUTE OF TECHNOLOGY		PART NAME aLIGO PCAL TOOLING, PERISCOPE PRE-ALIGNMENT SUPPORT WELDMENT	
SYSTEM ADVANCED LIGO	SUB-SYSTEM AOS	DESIGNER C. CONLEY	DATE 25 SEP 2012
CHECKER C. CONLEY	DATE 30 NOV 2012	SIZE D	DWG. NO. D1201333
APPROVAL	SCALE NONE	PROJECTION	REV. v1
NEXT ASSY D1201544		SHEET 1 OF 2	

D1201333 aLIGO PCAL Tooling, Periscope Pre-Alignment Support Weldment, PART PDM REV. X-033, DRAWING PDM REV. X-019

D:\201333 at LIGO Fiscal Year 2013, Telescope Pre-Alignment Support Weldment, PART PDM REV. X-033, DRAWING PDM REV. X-019



VIEW A-A

LIGO CALIFORNIA INSTITUTE OF TECHNOLOGY MASSACHUSETTS INSTITUTE OF TECHNOLOGY		REV.
SIZE DWG. NO.	D1201333	v1
SCALE: NONE	PROJECTION:	SHEET 2 OF 2